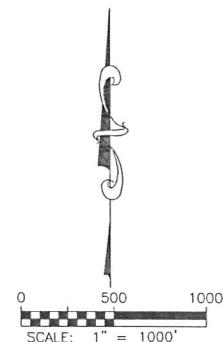
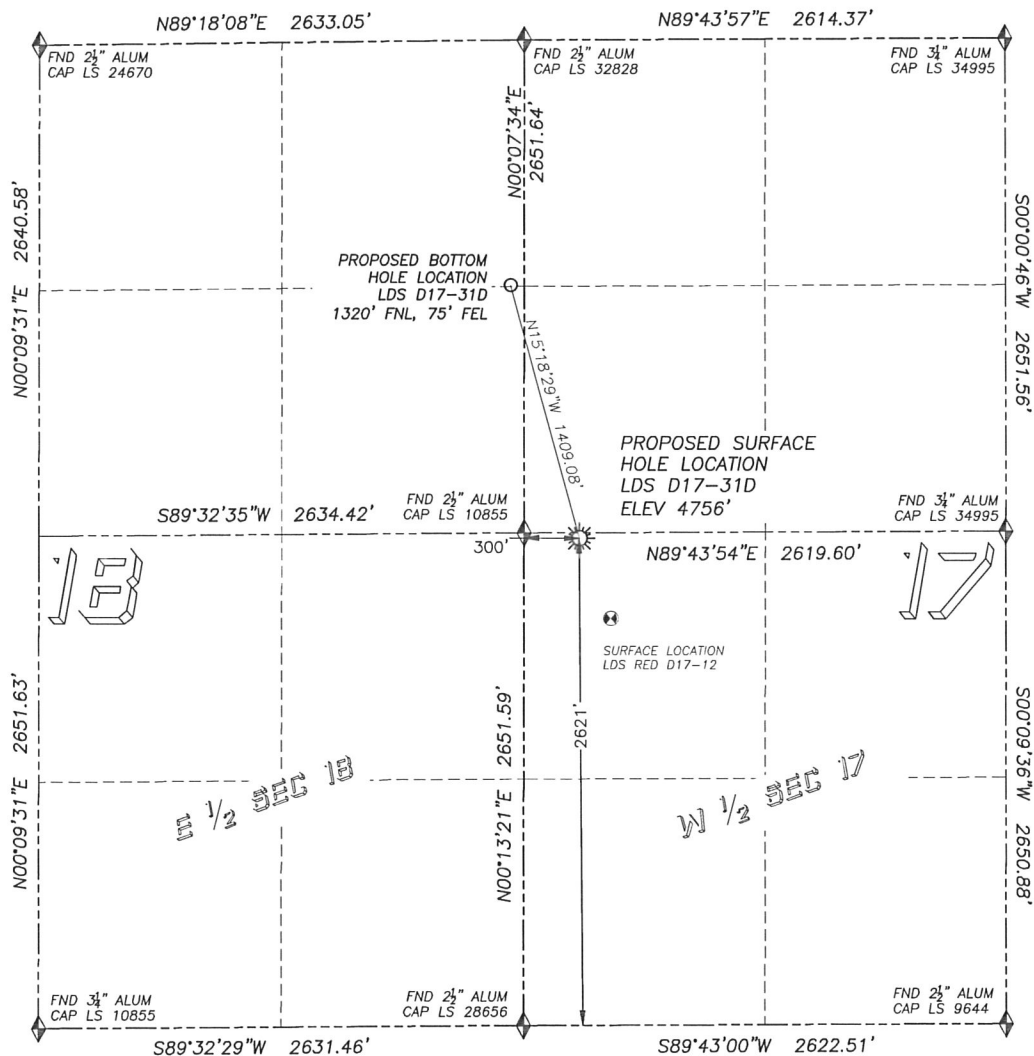


# WELL LOCATION CERTIFICATE

## LDS D17-31D

SECTION 17, TOWNSHIP 3 NORTH, RANGE 64 WEST OF THE 6TH PRINCIPAL MERIDIAN

**LEGEND**

- ◆ FOUND MONUMENT AS DESCRIBED
- ☀ PROPOSED WELL
- ⊙ EXISTING WELL
- BOTTOM HOLE
- ⊘ ABANDONED WELL

**NAD 83 LATITUDE AND LONGITUDE****LDS D17-31D SURFACE HOLE:**

LATITUDE: N40.22526°  
 LONGITUDE: W104.58333°  
 ELEVATION: 4756'  
 PDOP 1.6

2621' FSL, 300' FWL

**BOTTOM HOLE:**

LATITUDE: N40.22899°  
 LONGITUDE: W104.58466°  
 1320' FNL, 75' FEL, SEC 18

**NEAREST EXISTING WELL:**

LDS RED D17-12 SURFACE HOLE  
 LATITUDE: N40.22407°  
 LONGITUDE: W104.58271°  
 ELEVATION: 4757'  
 464' SOUTHEAST

QUARTER/QUARTER: NW4/SW4

NEAREST APPARENT PROPERTY LINE:  
 30'± NORTH

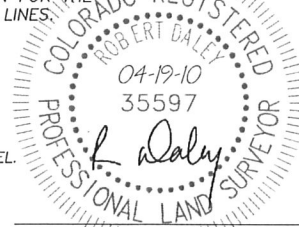
IN ACCORDANCE WITH A REQUEST FROM MATT CAMPBELL OF NOBLE ENERGY INC., DALEY LAND SURVEYING, INC. HAS DETERMINED THE SURFACE LOCATION OF THE LDS D17-31D WELL TO BE 2621' FSL, 300' FWL, AS MEASURED AT NINETY (90) DEGREES FROM THE SECTION LINES OF SECTION 17, TOWNSHIP 3 NORTH, RANGE 64 WEST OF THE 6TH PRINCIPAL MERIDIAN, WELD COUNTY, COLORADO. THE BOTTOM HOLE LOCATION, PROVIDED BY THE CLIENT, IS TO BE 1320' FNL, 75' FEL, SEC 18.

I HEREBY CERTIFY THAT THIS WELL LOCATION CERTIFICATE WAS PREPARED BY ME OR UNDER MY DIRECT SUPERVISION, THAT THE WORK WAS COMPLETED ON 4/15/2010 FOR AND ON BEHALF OF NOBLE ENERGY, INC., AND THAT THIS MAP DOES NOT REPRESENT A BOUNDARY SURVEY, IT IS NOT A LAND SURVEY PLAT OR AN IMPROVEMENT SURVEY PLAT AND IT IS NOT TO BE RELIED UPON FOR THE ESTABLISHMENT OF FENCE, BUILDING OR OTHER FUTURE IMPROVEMENT LINES.

**NOTES:**

- 1) BEARINGS FOR THIS MAP ARE ASSUMED AND BASED UPON GPS OBSERVATIONS MADE BETWEEN MONUMENTS LOCATED AT THE NORTHWEST AND WEST QUARTER CORNER OF SECTION 17, T.3N., R.64W.
- 2) HORIZONTAL DATUM IS NAD83.
- 3) VERTICAL DATUM IS NAVD88. ELEVATIONS ARE DERIVED FROM GPS OBSERVATIONS PROCESSED THROUGH OPUS, UTILIZING THE GEOID03 MODEL.
- 4) SEE VISIBLE IMPROVEMENTS EXHIBIT FOR VISIBLE IMPROVEMENTS WITHIN 600' OF PROPOSED SURFACE HOLE LOCATION.
- 5) SURFACE USE: AGRICULTURAL.

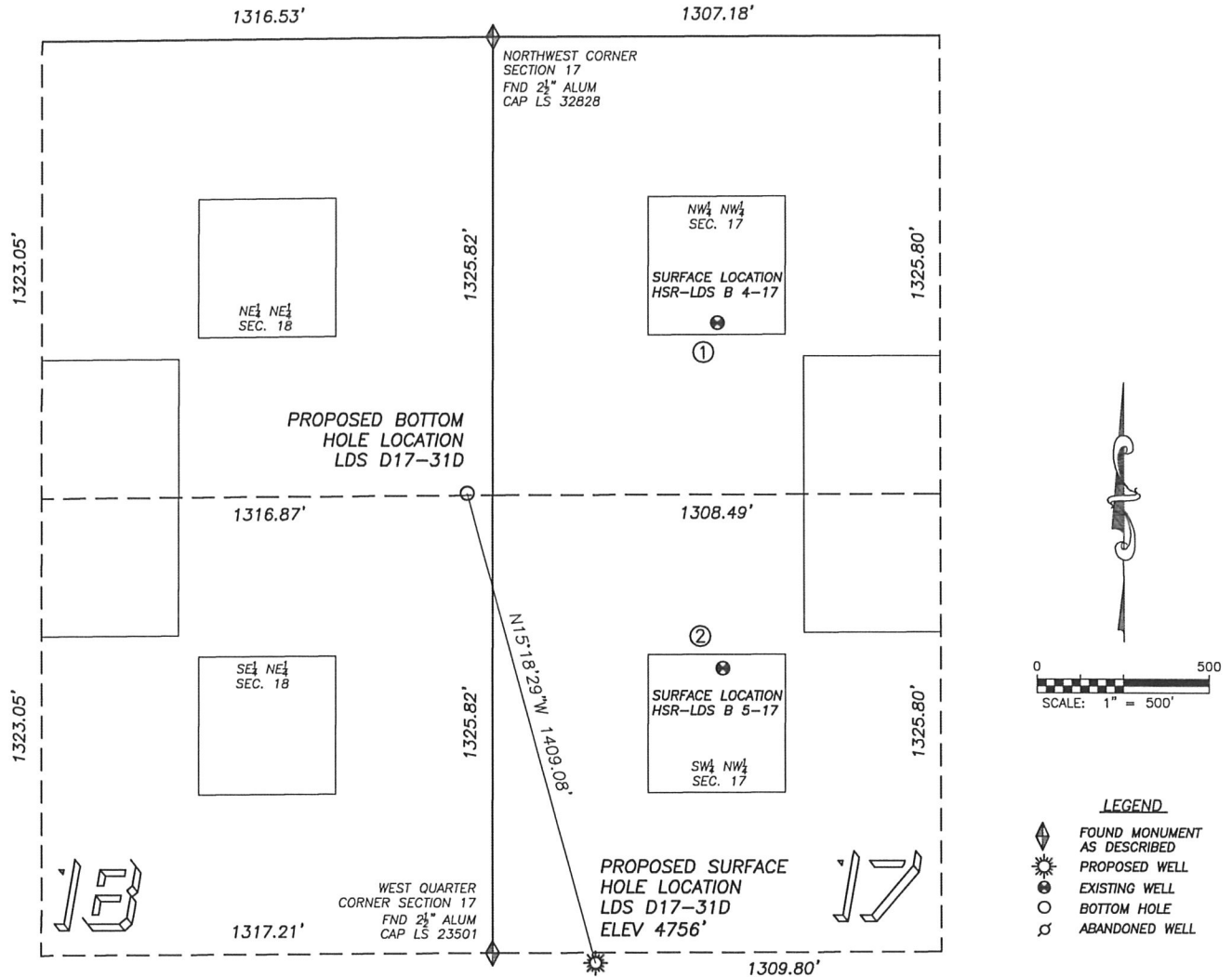
NOTICE: According to Colorado law you MUST commence any legal action based upon any defect in this W.L.C. within three years after you first discover such defect. In no event may any action based upon any such defect in this W.L.C. be commenced more than ten years from the date of the certification shown herein.



FOR AND ON BEHALF OF  
 DALEY LAND SURVEYING INC.,  
 Robert Daley, PLS 35597

## SITE SKETCH LDS D17-31D

SECTION 17, TOWNSHIP 3 NORTH, RANGE 64 WEST OF THE 6TH PRINCIPAL MERIDIAN



①  
**HSR-LDS B 4-17**  
 NW/NW SEC. 17  
 829' FNL, 655' FWL  
 882' NE OF PROPOSED  
 BOTTOM HOLE LOCATION  
 LAT. N40.23035°  
 LONG. W104.58204°  
 EL: 4750'  
 PDOP 2.0

②  
**HSR-LDS B 5-17**  
 SW/NW SEC. 17  
 1829' FNL, 671' FWL  
 899' SE OF PROPOSED  
 BOTTOM HOLE LOCATION  
 LAT. N40.22760°  
 LONG. W104.58199°  
 EL: 4753'  
 PDOP 1.9

- NOTES:  
 1. THIS DOES NOT REPRESENT  
 A BOUNDARY SURVEY  
 2. THE LATITUDES AND  
 LONGITUDES SHOWN ARE  
 REFERENCED TO NAD83  
 3. DATUM FOR ELEVATION IS  
 NAVD83. ELEVATIONS ARE  
 DERIVED FROM GPS-RTK  
 OBSERVATIONS PROCESSED  
 THROUGH OPUS, UTILIZING  
 THE GEOID03 MODEL

