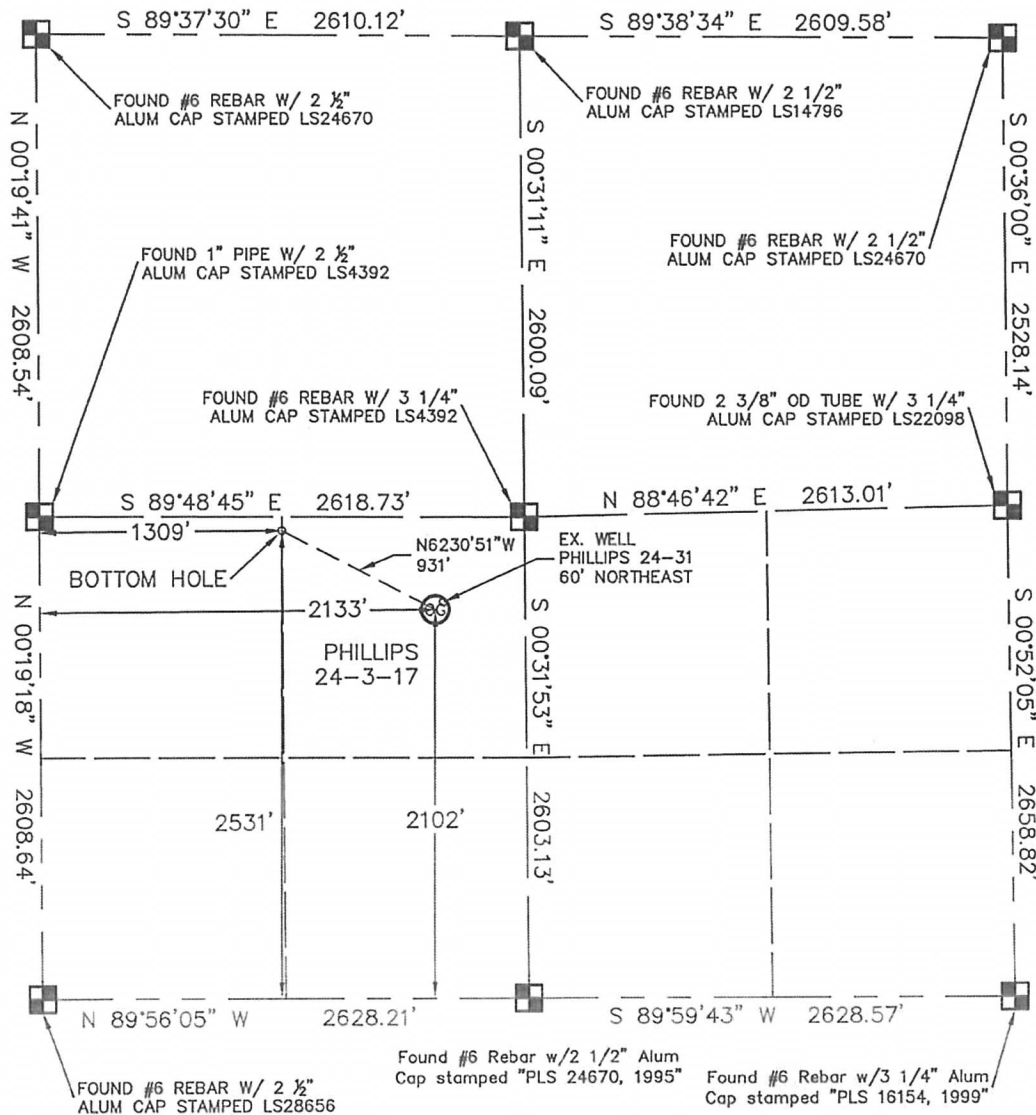
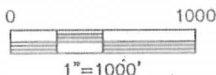


WELL LOCATION CERTIFICATE

THIS MAP DOES NOT REPRESENT A BOUNDARY SURVEY

SECTION: 24
TOWNSHIP: 5N
RANGE: 67WIn accordance with a request from JOE JOHNSON with Noble Energy Inc.King Surveyors Inc. has determined the surface location of the PHILLIPS 24-3-17 to be 2102' from the SOUTH line and 2133' from the WEST line and the bottom hole to be 2531' from the SOUTH line and 1309' from the WEST line, as measured at right angles, from the section lines of Section 24, Township 5 North, Range 67 West of the Sixth Principal Meridian, County of Weld, State of Colorado.I hereby state that this Well Location Certificate was prepared by me, or under my direct supervision, that the fieldwork was completed on 4-26-2010, for and on behalf of Noble Energy Inc. That this is not a Land Survey Plat or an Improvement Survey Plat, and that it is not to be relied upon for establishment of fence, building, or other future improvement lines.

NOTE:

- 1) Bearings shown are Grid Bearings of the Colorado State Plane Coordinate System, North Zone, North American Datum 1983/92. The lineal dimensions as contained herein are based upon the "U.S. Survey Foot."
- 2) Ground elevations are based on an observed GPS elevation (NAVD 1988 DATUM).
- 3) NEAREST EXISTING WELL: PHILLIPS 24-31 60' NORTHEAST
- 4) IMPROVEMENTS: See VISIBLE IMPROVEMENTS exhibit for all visible improvements within 400' of well head.
- 5) SURFACE USE: CROP FIELD; OIL & GAS WELL AND ROAD

SURFACE LOCATION
LATITUDE: 40.38361°N
LONGITUDE: 104.84329°W
PDOP: 1.7
ELEV: 4997'
1/4, 1/4: NE1/4 SW1/4
NEAREST PROPERTY LINE: 488' EAST

BOTTOM HOLE
LATITUDE: 40.38480°N
LONGITUDE: 104.84624°W

NOTE

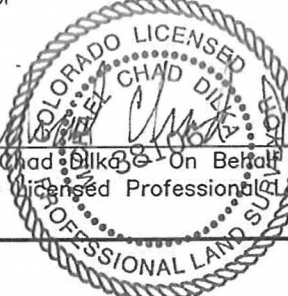
According to Colorado law, you must commence any legal action based upon any defect in this W.L.C. within three years after you discover such defect. In no event, may any action based upon any defect in this survey be commenced more than ten years after the date of the certificate shown hereon. (13-80-105 C.R.S.)

LEGEND

- = ALIQUOT MONUMENT AS DESCRIBED
- = CALCULATED POSITION

Michael Chad Dillk 38106 On Behalf of King Surveyors, Inc.
Colorado Licensed Professional Land Surveyor #38106

PROJECT#: 2010144

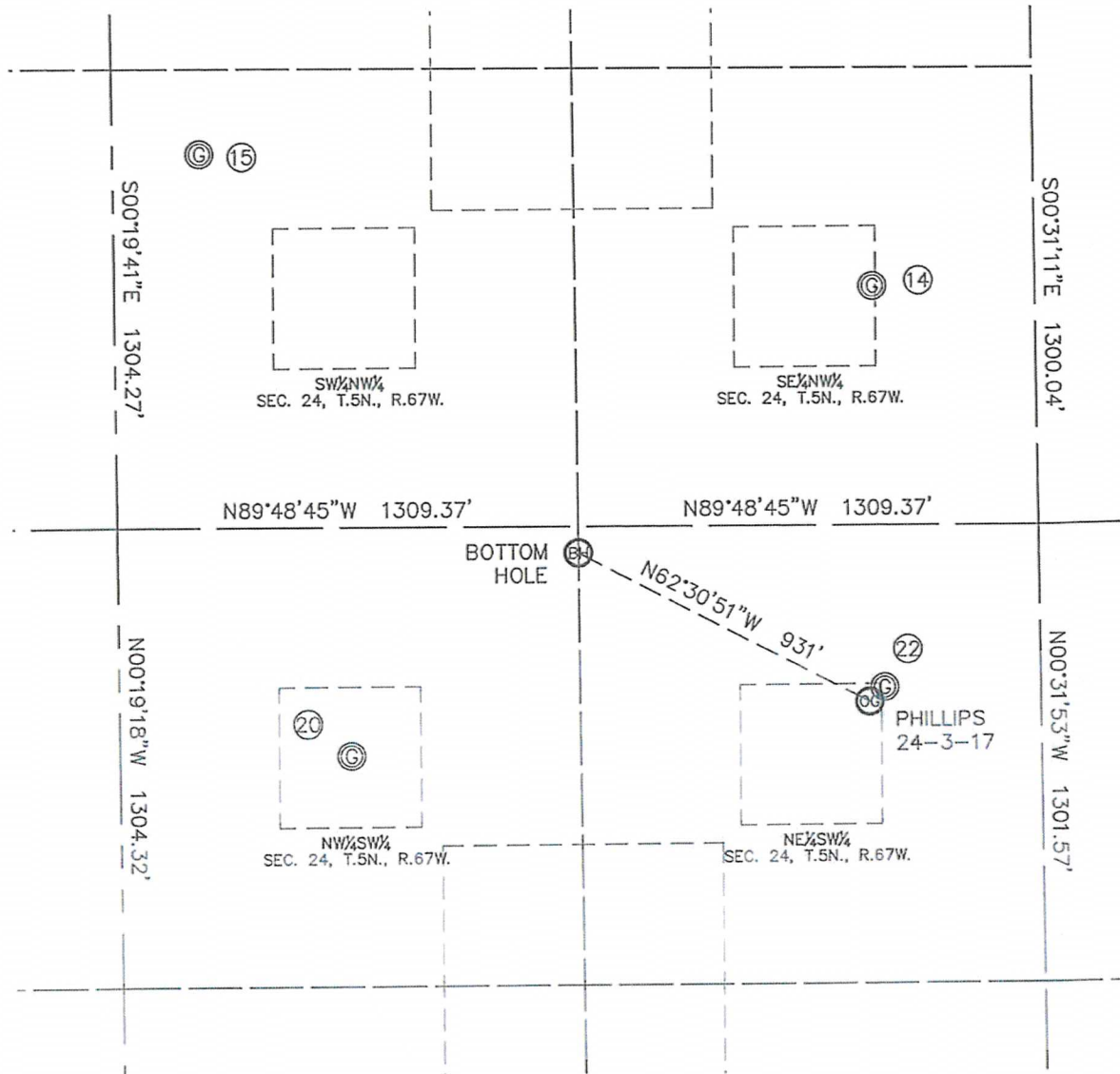


KING SURVEYORS, INC.

650 E. GARDEN DR. WINDSOR, CO 80550

SITE SKETCH

SECTION: 24
TOWNSHIP: 5N
RANGE: 67W



⑭

DL PHILLIPS 24-24
SE1/4 NW1/4
1921' FNL
2153' FWL
LAT-40.38685°N
LONG-104.84321°W
PDOP: 2.8
ELEV: 4971'

⑮

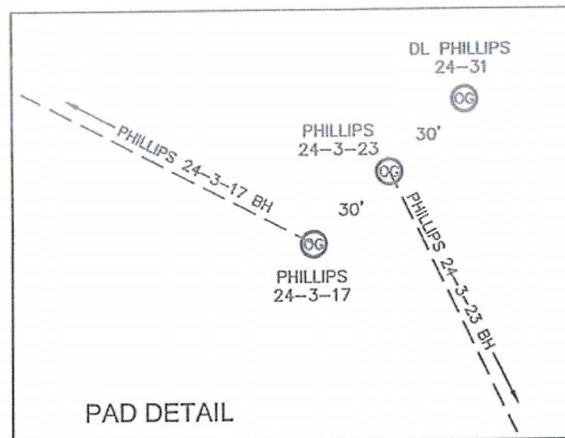
DL PHILLIPS 24-23
SW1/4 NW1/4
1546' FNL
247' FWL
LAT-40.38795°N
LONG-104.85005°W
PDOP: 3.3
ELEV: 4987'

⑳

DL PHILLIPS 24-32
NW1/4 SW1/4
1959' FSL
659' FWL
LAT-40.38325°N
LONG-104.84858°W
PDOP: 1.7
ELEV: 5031'

㉔

DL PHILLIPS 24-31
NE1/4 SW1/4
2143' FSL
2176' FWL
LAT-40.38372°N
LONG-104.84314°W
PDOP: 0.9
ELEV: 4996'



PAD DETAIL

