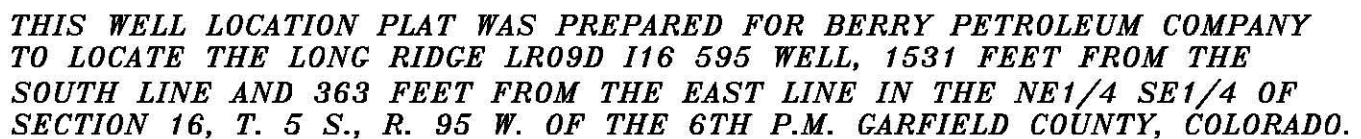
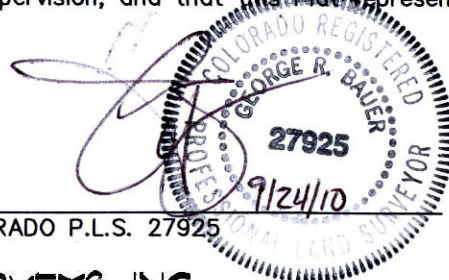


Long Ridge 116-595
Pad Location



- 1) T. 5 S., R. 95 W., 6TH P.M. GLO PLAT.
- 2) U.S.G.S. QUAD: FORKED GULCH, CO
- 3) ELEVATIONS BASED ON N.A.V.D. 1988
- 4) LATITUDES AND LONGITUDES ARE BASED ON
NAD 83, COLORADO CENTRAL ZONE.
- 5) GPS OPERATOR IVAN MARTIN, OBSERVED
A PDOP OF 2.5.
- 6) ALL GPS OBSERVATIONS ARE IN COMPLIANCE
WITH COGCC RULE NO. 215.
- 7) SURFACE AND BOTTOM HOLE LOCATIONS
ARE MEASURED 90° FROM SECTION LINES.

I, George R. Bauer: a Professional Land Surveyor in the State of Colorado do hereby certify that this Survey was made under my direct supervision, and that this Plot represents said Survey.



COLORADO P.L.S. 27925



CONSTRUCTION SURVEYS, INC.
0012 SUNRISE BLVD.
SILT, CO 81652
(970)876-5753

SURVEYED: 09
DRAFTED: 09
REVISED: 08

VIEW: 1B

SURVEYED: 09/08/10	SCALE: 1" = 1000'
DRAFTED: 09/16/10	DWG: Berry/LongRidge I16-595.dwg
REVISED: 08/24/10	SHEET: 1 of 11