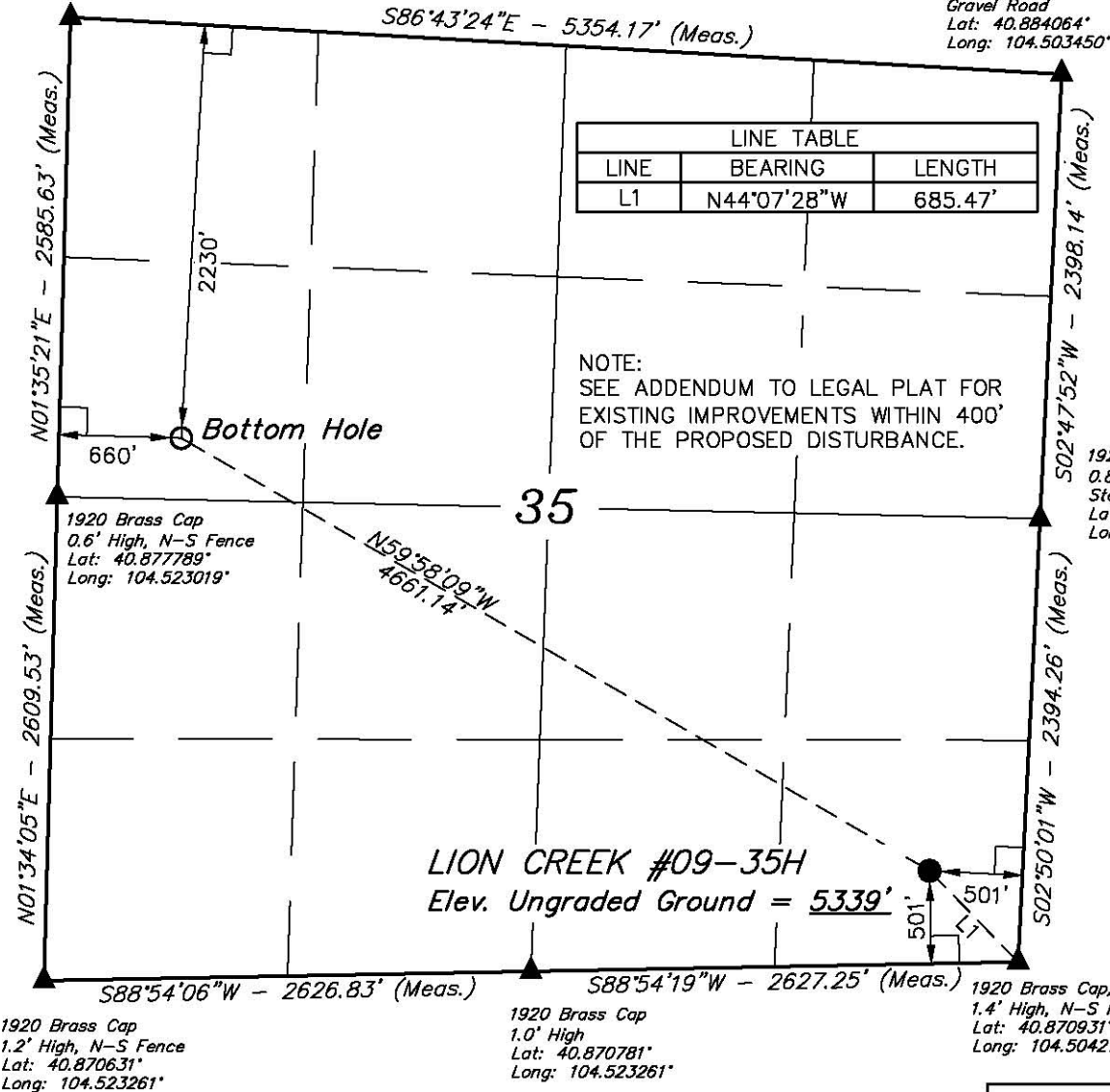


T11N, R64W, 6th P.M.

EOG RESOURCES, INC.

2010 UELS Alum.
Cap
Lat: 40.884881°
Long: 104.522778°

2010 UELS Alum.
Cap, 0.5' Below
Gravel Road
Lat: 40.884064°
Long: 104.503450°



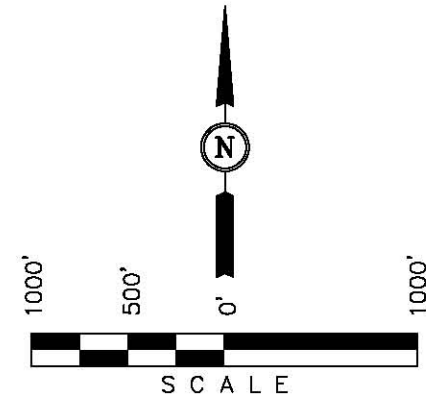
Well location, LION CREEK #09-35H, located as shown in the SE 1/4 SE 1/4 of Section 35, T11N, R64W, 6th P.M., Weld County, Colorado.

BASIS OF ELEVATION

SPOT ELEVATION AT THE NORTHEAST CORNER OF SECTION 1, T11N, R63W, 6th P.M. TAKEN FROM THE HEREFORD, QUADRANGLE, COLORADO, WELD COUNTY, 7.5 MINUTE QUAD (TOPOGRAPHIC MAP) PUBLISHED BY THE UNITED STATES DEPARTMENT OF THE INTERIOR, GEOLOGICAL SURVEY. SAID ELEVATION IS MARKED AS BEING 5352 FEET.

BASIS OF BEARINGS

BASIS OF BEARINGS IS A G.P.S. OBSERVATION.



CERTIFICATE

THIS IS TO CERTIFY THAT THE ABOVE PLAT WAS PREPARED FROM FIELD NOTES OF ACTUAL SURVEYS MADE BY ME OR UNDER MY SUPERVISION AND THAT THE SAME ARE TRUE AND CORRECT TO THE BEST OF MY KNOWLEDGE AND BELIEF.

REGISTERED LAND SURVEYOR
REGISTRATION NO. 1492
STATE OF COLORADO

REV: 10-12-10 Z.L.
REV: 07-30-10 Z.L.

UINTAH ENGINEERING & LAND SURVEYING
85 SOUTH 200 EAST - VERNAL, UTAH 84078
(435) 789-1017

LEGEND:

- └─┘ = 90° SYMBOL
- = PROPOSED WELL HEAD.
- ▲ = SECTION CORNERS LOCATED.

NAD 83 (TARGET BOTTOM HOLE)	NAD 83 (SURFACE LOCATION)
LATITUDE = 40°52'43.18" (40.878661)	LATITUDE = 40°52'20.20" (40.872278)
LONGITUDE = 104°31'14.17" (104.520603)	LONGITUDE = 104°30'21.61" (104.506003)
NAD 27 (TARGET BOTTOM HOLE)	NAD 27 (SURFACE LOCATION)
LATITUDE = 40°52'43.25" (40.878681)	LATITUDE = 40°52'20.27" (40.872297)
LONGITUDE = 104°31'12.32" (104.520089)	LONGITUDE = 104°30'19.76" (104.505489)
STATE PLANE NAD 83	STATE PLANE NAD 83
N: 1564442.019 E: 3270840.702	N: 1562161.340 E: 3274904.061
STATE PLANE NAD 27	STATE PLANE NAD 27
N: 5644440.381 E: 2270990.237	N: 562159.766 E: 2275053.537

SCALE 1" = 1000'	DATE SURVEYED: 05-06-10	DATE DRAWN: 05-21-10
PARTY R.P. B.S. C.H.	REFERENCES G.L.O. PLAT	
WEATHER WARM	FILE EOG RESOURCES, INC.	