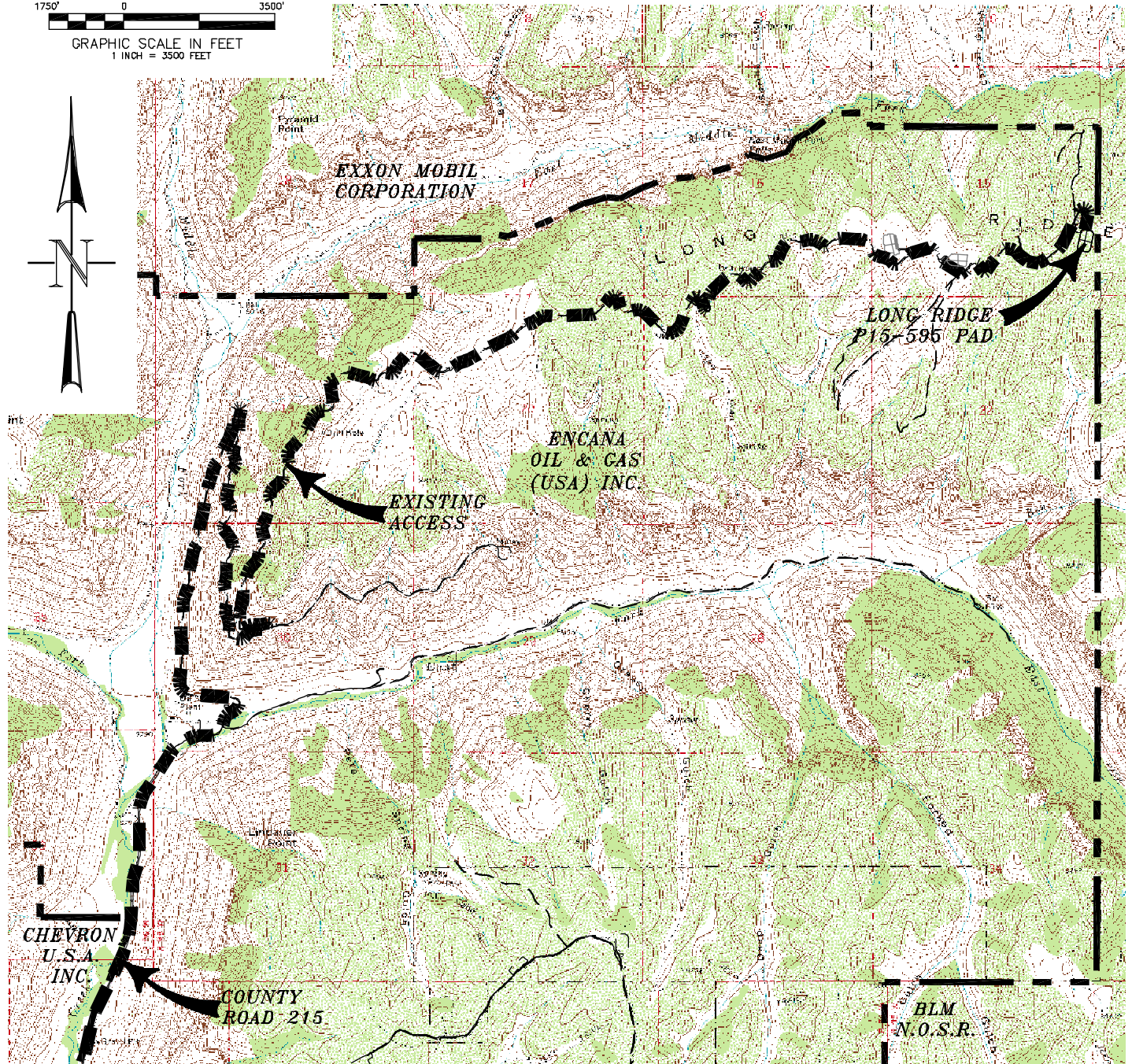
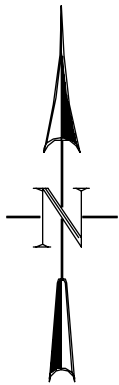


ACCESS ROAD MAP

1750' 0 3500'
GRAPHIC SCALE IN FEET
1 INCH = 3500 FEET



ACCESS:

FROM THE INTERSECTION OF HIGHWAY 6 & 24 AND COUNTY ROAD 215 AT PARACHUTE, PROCEED IN A GENERAL NORTHERLY DIRECTION ALONG COUNTY ROAD 215 ± 10.7 MILES TO A POINT WHERE THE PAVEMENT BECOMES A DIRT/GRAVEL ROAD, CONTINUE ALONG THE DIRT/GRAVEL ROAD IN A GENERAL NORTHERLY DIRECTION ± 3.3 MILES TO A LOCKED GATE, CONTINUE ALONG THE DIRT/GRAVEL ROAD IN A GENERAL NORTHEASTERLY DIRECTION ± 8.2 MILES TO AN INTERSECTION WITH A NEW PAD ACCESS ROAD ON THE RIGHT, PROCEED RIGHT IN A GENERAL EASTERLY DIRECTION APPROXIMATELY ± 0.5 MILES TO THE PROPOSED LONG RIDGE P15-595 WELL PAD, BEING THE LOCATION.



CONSTRUCTION SURVEYS, INC. Long Ridge P15-595
0012 SUNRISE BLVD.
SILT, CO 81652
(970)876-5753

E 1/2 SE 1/4 SECTION 15, T. 5 S., R. 95 W.
BERRY PETROLEUM COMPANY

SCALE: 1" = 3500'

SHEET 4 OF 11