

---

# **WILLIAMS PRODUCTION COMPANY EBUS**

---

**NWCH 32-10 #9A**

**La Plata County , Colorado**

**Cement Surface Casing**

**15-Oct-2009**

**Job Site Documents**

*The Road to Excellence Starts with Safety*

<b>Sold To #:</b> 306529		<b>Ship To #:</b> 306529		<b>Quote #:</b>		<b>Sales Order #:</b> 6946552	
<b>Customer:</b> WILLIAMS PRODUCTION COMPANY EBUS				<b>Customer Rep:</b> Alleman, Brian			
<b>Well Name:</b> NWCH			<b>Well #:</b> 32-10 #9A			<b>API/UWI #:</b> 0506709431	
<b>Field:</b>		<b>City (SAP):</b> TULSA		<b>County/Parish:</b> La Plata		<b>State:</b> Colorado	
<b>Legal Description:</b> Section 19 Township 32N Range 10W							
<b>Contractor:</b> Aztec Well Service			<b>Rig/Platform Name/Num:</b> AWS 781				
<b>Job Purpose:</b> Cement Surface Casing							
<b>Well Type:</b> Development Well				<b>Job Type:</b> Cement Surface Casing			
<b>Sales Person:</b> PINKERTON, HAP			<b>Srvc Supervisor:</b> DOBBS, GARY			<b>MBU ID Emp #:</b> 122012	
<b>Job Personnel</b>							
<b>HES Emp Name</b>	<b>Exp Hrs</b>	<b>Emp #</b>	<b>HES Emp Name</b>	<b>Exp Hrs</b>	<b>Emp #</b>	<b>HES Emp Name</b>	<b>Exp Hrs</b>
AXT, STEPHEN Gary	5.5	434802	BUTTS, MICHAEL L	5.5	446521	DOBBS, GARY D	5.5
<b>Equipment</b>							
<b>HES Unit #</b>	<b>Distance-1 way</b>	<b>HES Unit #</b>	<b>Distance-1 way</b>	<b>HES Unit #</b>	<b>Distance-1 way</b>	<b>HES Unit #</b>	<b>Distance-1 way</b>
<b>Job Hours</b>							
<b>Date</b>	<b>On Location Hours</b>	<b>Operating Hours</b>	<b>Date</b>	<b>On Location Hours</b>	<b>Operating Hours</b>	<b>Date</b>	<b>On Location Hours</b>
10/15/09	5.5	3					
<b>TOTAL</b>		<i>Total is the sum of each column separately</i>					
<b>Job</b>				<b>Job Times</b>			
<b>Formation Name</b>					<b>Date</b>	<b>Time</b>	<b>Time Zone</b>
<b>Formation Depth (MD)</b>	<b>Top</b>		<b>Bottom</b>		<b>Called Out</b>	14 - Oct - 2009	21:30
<b>Form Type</b>	BHST				<b>On Location</b>	15 - Oct - 2009	00:00
<b>Job depth MD</b>	348. ft		<b>Job Depth TVD</b>	348. ft	<b>Job Started</b>	15 - Oct - 2009	03:40
<b>Water Depth</b>				<b>Wk Ht Above Floor</b>	3. ft	<b>Job Completed</b>	15 - Oct - 2009
<b>Perforation Depth (MD)</b>	<b>From</b>		<b>To</b>		<b>Departed Loc</b>	15 - Oct - 2009	05:30
<b>Well Data</b>							
<b>Description</b>	<b>New / Used</b>	<b>Max pressure psig</b>	<b>Size in</b>	<b>ID in</b>	<b>Weight lbm/ft</b>	<b>Thread</b>	<b>Grade</b>
Surface Open Hole				12.25			
Surface Casing	Unknown		9.625	8.921	36.		K-55
<b>Sales/Rental/3<sup>rd</sup> Party (HES)</b>							
<b>Description</b>				<b>Qty</b>	<b>Qty uom</b>	<b>Depth</b>	<b>Supplier</b>
PLUG,CMTG,TOP,9 5/8,HWE,8.16 MIN/9.06 MA				1	EA		
SHOE,GID,9-5/8 8RD				1	EA		
V ASSY,INSR FLOAT,9 5/8 LG,8RD,F/ USE				1	EA		
CENTRALIZER-9-5/8"-CSG-12 1/4"-HINGED				4	EA		
COLLAR-STOP-9 5/8"-FRICTION-HINGED				1	EA		
KIT,HALL WELD-A				3	EA		
SHOE,GID,7 8RD				1	EA		
CLR,FLT,TROPHY SEAL, 7 8RD				1	EA		
AUTOFILL KIT,TROPHY SEAL				1	EA		
CENTRALIZER-7"-CSG-8-1/2"-HINGED				10	EA		
CLAMP - LIMIT - 7 - HINGED -				1	EA		

Tools and Accessories													
Type	Size	Qty	Make	Depth	Type	Size	Qty	Make	Depth	Type	Size	Qty	Make
Guide Shoe					Packer					Top Plug			
Float Shoe					Bridge Plug					Bottom Plug			
Float Collar					Retainer					SSR plug set			
Insert Float										Plug Container			
Stage Tool										Centralizers			
Miscellaneous Materials													
Gelling Agt			Conc		Surfactant			Conc		Acid Type		Qty	Conc %
Treatment Fld			Conc		Inhibitor			Conc		Sand Type		Size	Qty
Fluid Data													
Stage/Plug #: 1													
Fluid #	Stage Type	Fluid Name				Qty	Qty uom	Mixing Density lbm/gal	Yield ft3/sk	Mix Fluid Gal/sk	Rate bbl/min	Total Mix Fluid Gal/sk	
1	Water					10.00	bbl	8.34	.0	.0	.0		
2	Cement Slurry	CMT - STANDARD TYPE III - FINE (100012229)				200.0	sacks	13.5	1.8	9.41		9.41	
	94 lbm	CMT - STANDARD TYPE III - FINE , BULK (100012229)											
	2 %	CAL-SEAL 60, 50 LB BAG (101217146)											
	0.25 lbm	POLY-E-FLAKE (101216940)											
	0.3 %	VERSASET, 55 LB SK (101376573)											
	2 %	ECONOLITE (100001580)											
	6 %	SALT 34.5% (100003652)											
	9.414 Gal	FRESH WATER											
3	Water Displacement					23.00	bbl	8.34	.0	.0	.0		
Calculated Values		Pressures		Volumes									
Displacement	23	Shut In: Instant	162	Lost Returns		Cement Slurry	64	Pad					
Top Of Cement	0	5 Min		Cement Returns	40	Actual Displacement	23	Treatment					
Frac Gradient		15 Min		Spacers	10	Load and Breakdown		Total Job					
Rates													
Circulating	3	Mixing	4	Displacement	4	Avg. Job	4						
Cement Left In Pipe	Amount	45 ft	Reason	Shoe Joint									
Frac Ring # 1 @	ID	Frac ring # 2 @	ID	Frac Ring # 3 @	ID	Frac Ring # 4 @	ID						
The Information Stated Herein Is Correct				Customer Representative Signature									

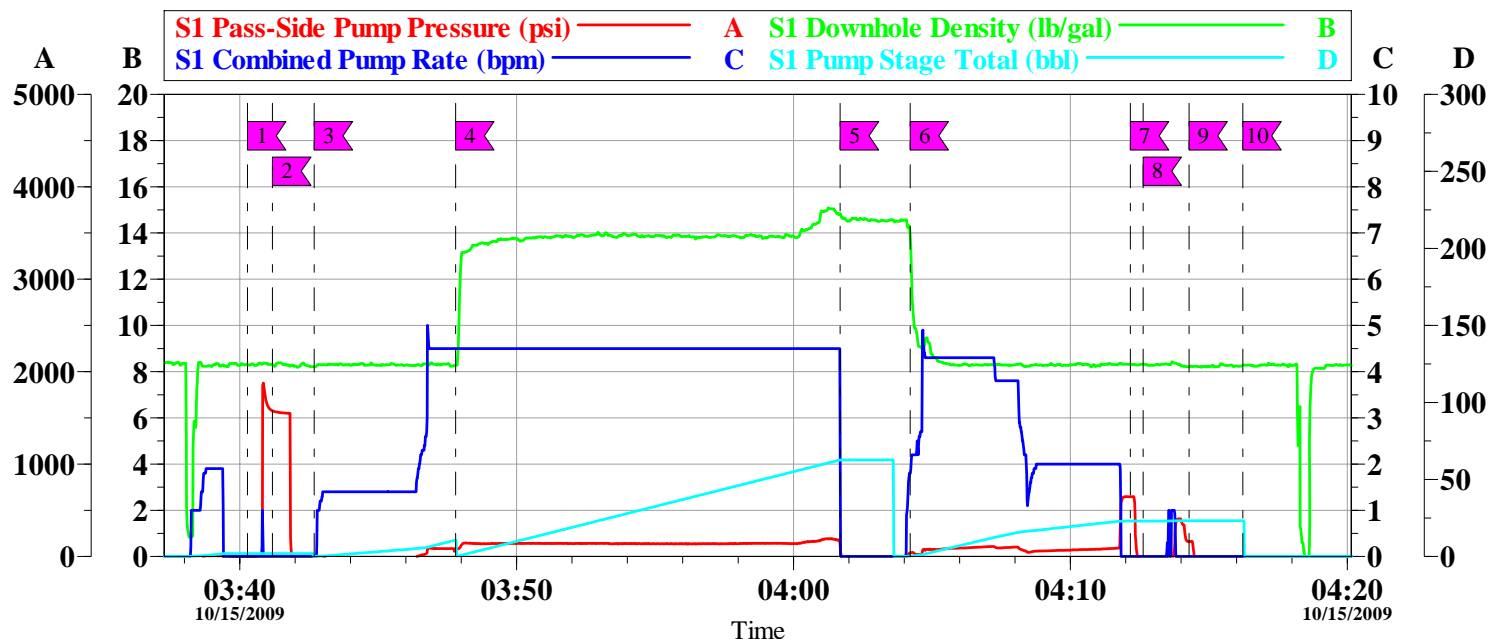
*The Road to Excellence Starts with Safety*

<b>Sold To #:</b> 306529	<b>Ship To #:</b> 306529	<b>Quote #:</b>	<b>Sales Order #:</b> 6946552
<b>Customer:</b> WILLIAMS PRODUCTION COMPANY EBUS		<b>Customer Rep:</b> Alleman, Brian	
<b>Well Name:</b> NWCH	<b>Well #:</b> 32-10 #9A	<b>API/UWI #:</b> 0506709431	
<b>Field:</b>	<b>City (SAP):</b> TULSA	<b>County/Parish:</b> La Plata	<b>State:</b> Colorado
<b>Legal Description:</b> Section 19 Township 32N Range 10W			
<b>Lat:</b> N 0 deg. OR N 0 deg. 0 min. 0 secs.		<b>Long:</b> E 0 deg. OR E 0 deg. 0 min. 0 secs.	
<b>Contractor:</b> Aztec Well Service		<b>Rig/Platform Name/Num:</b> AWS 781	
<b>Job Purpose:</b> Cement Surface Casing			<b>Ticket Amount:</b>
<b>Well Type:</b> Development Well		<b>Job Type:</b> Cement Surface Casing	
<b>Sales Person:</b> PINKERTON, HAP		<b>Srvc Supervisor:</b> DOBBS, GARY	<b>MBU ID Emp #:</b> 122012

Activity Description	Date/Time	Cht #	Rate bbl/min	Volume bbl		Pressure psig		Comments
				Stage	Total	Tubing	Casing	
Pre-Convoy Safety Meeting	10/14/2009 22:00							
Arrive at Location from Service Center	10/15/2009 00:00							
Assessment Of Location Safety Meeting	10/15/2009 00:05							
Wait on Customer or Customer Sub-Contractor Equip	10/15/2009 00:10							WAIT ON RIG CREW TO POOH WITH DRILL PIPE & RUN CASING
Wait on Customer or Customer Sub-Contractor Equipm	10/15/2009 02:20							CASING ON BOTTOM , SPOT TRUCKS
Pre-Rig Up Safety Meeting	10/15/2009 02:25							
Rig-Up Equipment	10/15/2009 02:30							RIG UP EQUIPMENT
Pre-Job Safety Meeting	10/15/2009 03:30							
Start Job	10/15/2009 03:40							
Test Lines	10/15/2009 03:41					1500.0		
Pump Spacer 1	10/15/2009 03:42		2	10			.0	WATER
Pump Cement	10/15/2009 03:47		5	64			80.0	CEMENT MIXED @ 13.5# VARIFIED WEIGHT WITH SCALES
Drop Top Plug	10/15/2009 04:01							
Pump Displacement	10/15/2009 04:04		4	13			38.0	WATER
Bump Plug	10/15/2009 04:12		2	10	23		646.0	WATER

Activity Description	Date/Time	Cht #	Rate bbl/ min	Volume bbl		Pressure psig		Comments
				Stage	Total	Tubing	Casing	
Check Floats	10/15/2009 04:13							FLOATS HELD
Pressure Up	10/15/2009 04:14						162.0	
Shut In Well	10/15/2009 04:15						163.0	
End Job	10/15/2009 04:16							CIRCULATED 40 BBLS OF CEMENT TO PIT

### WILLIAMS 9 5/8" SURFACE



Local Event Log					
Intersection		SPPP		Intersection	
1	START JOB	03:40:17	0.000	2	TEST LINES
3	PUMP SPACER 1	03:42:41	-21.00	4	PUMP CEMENT
5	DROP PLUG	04:01:41	108.3	6	PUMP DISPLACEMENT
7	BUMP PLUG	04:12:10	646.0	8	CHECK FLOATS
9	SHUT IN WELL	04:14:17	162.0	10	END JOB

Customer: WILLIAMS	Job Date: 15-Oct-2009	Sales Order #: 6946552
Well Description: NWCH 32-10#9A	CO REP: HARMON	SERVICE SUPERVISOR: DONNY DOBBS
TRUCK/OPERATOR: 11324578/BUTTS	ADC/ USED: YES	

OptiCem v6.4.1  
15-Oct-09 04:56