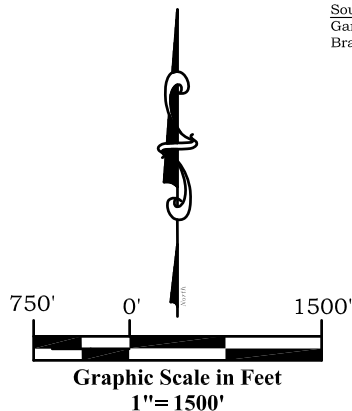
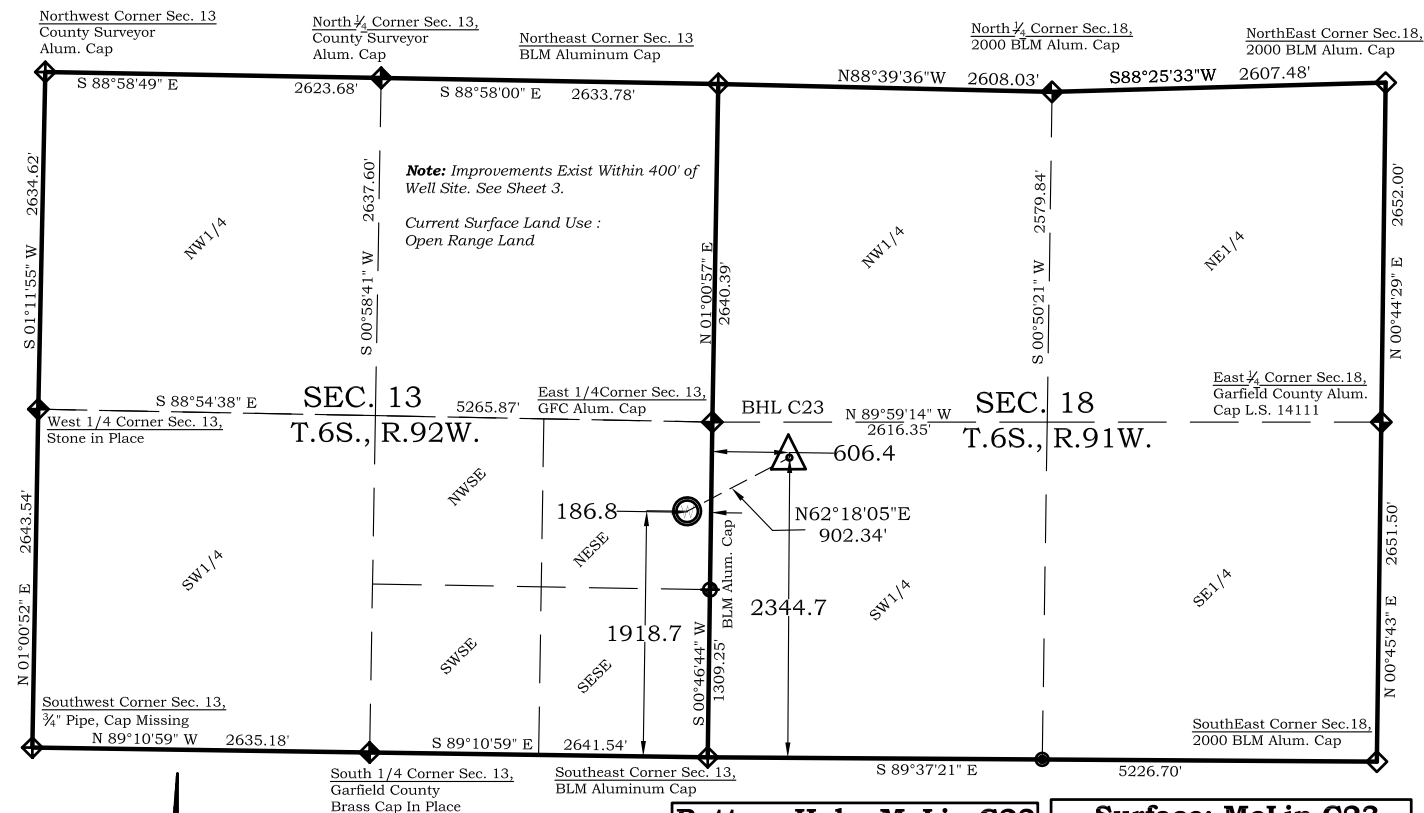


Well Location Plat

McLin C23

Section 13, Township 6 South, Range 92 West



Legend

- Field Surveyed Section Corner
- Field Surveyed Quarter Corner
- Calculated Section Corner Location
- Field Surveyed 1/6 Corner

Bottom Hole: McLin C23

2345' FSL

606' FWL

NAD83

Lat: 39.526520613°N

Long: 107.604224821°W

NAD27

Lat: 39.5265350°N

Long: 107.6036119°W

Surface: McLin C23

1919' FSL

187' FEL

Gnd El= 5725.2

Pad El= 5726.0

NAD83

Lat: 39.525306404°N

Long: 107.607012169°W

NAD27

Lat: 39.525325795°N

Long: 107.606399161°W

UTM 13 NORTH

NAD 1983

NORTHING

14364533.982

EASTING

905241.370

Prepared For Antero Resources

Proposed McLin C23 Well Situate in The NE 1/4 SE 1/4 Section
13, Township 6 South, Range 92 West of the 6 th. Principal
Meridian, County of Garfield, State of Colorado

SURVEYOR'S CERTIFICATE

I, SCOTT E. AIBNER, A REGISTERED LAND SURVEYOR, LICENSED UNDER THE LAWS OF THE STATE OF COLORADO DO HEREBY CERTIFY THAT THE SURVEY SHOWN HEREON WAS PREPARED BY RIVER VALLEY SURVEY, INC., FOR ANTERO RESOURCES, BY ME OR UNDER MY DIRECT SUPERVISION AND THAT THIS PLAT IS A TRUE REPRESENTATION THEREOF.

31143

SCOTT E. AIBNER, COLORADO REG. NO. 31143

Notes:

- LATITUDE AND LONGITUDE COORDINATES ARE DIFFERENTIALLY CORRECTED AND BASED ON PUBLISHED NGS CONTROL STATION "WDP-5". SYSTEM: UTM ZONE: 13 NORTH DATUM: NAD 1983 (CONUS)
- ELEVATIONS ARE BASED ON NAVD OF 1983.
- ALL BOTTOM AND TOP HOLE LOCATIONS ARE MEASURED 90 DEGREES FROM SECTION LINE.
- USGS QUADRANGLE MAP "SILT".
- CURRENT SURFACE LAND USE: HAY FIELD.
- PDOP AT THE TIME OF LOCATION OF SURFACE WELL = 2.4



River Valley Survey, Inc.
110 East 3rd. Street, Suite 213
Rifle, Colorado 81650
Ph: 970-379-7846

Project: McLin C PAD

Field Date: 01-19-10

Date: 09-01-10

Scale: 1"= 1500'

Sheet: 1 of 11

Well Location Plat
Prepared For Antero Resources

Situate In:
SE 1/4 Section 13, T6S., R. 92 W. of the
6th P.M., Garfield County, Colorado

