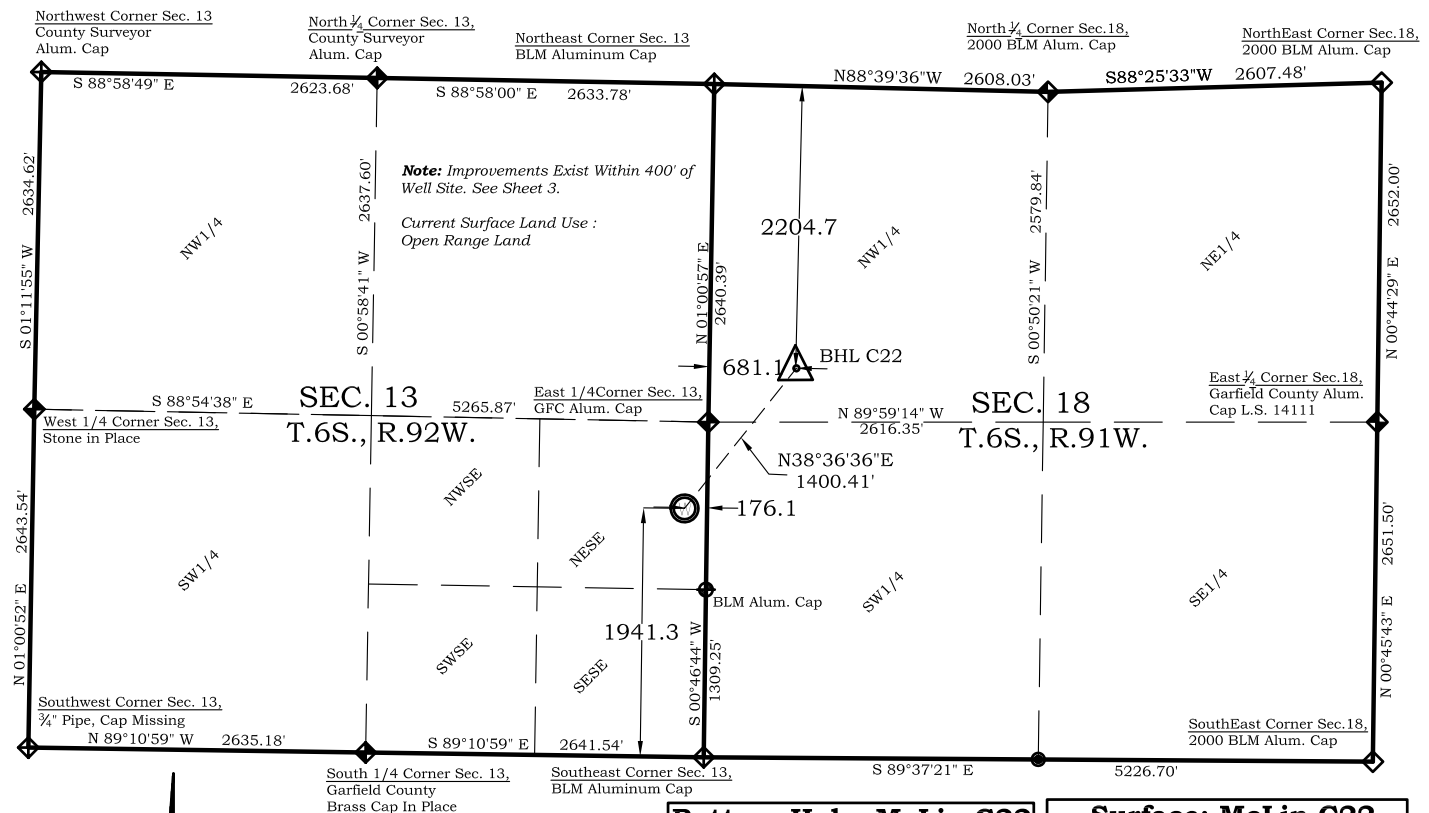






Well Location Plat

McLin C22



-  - Field Surveyed Section Corner
-  - Field Surveyed Quarter Corner
-  - Calculated Section Corner Location
-  - Field Surveyed 1/16 Corner

<p>Bottom Hole: McLin C22</p> <p>2205' FNL</p> <p>681' FWL</p> <p>NAD83</p> <p>Lat: 39.528440614°N</p> <p>Long: 107.603991937°W</p> <p>NAD27</p> <p>Lat: 39.5284643°N</p> <p>Long: 107.6033790°W</p>

Surface: McLin C22

1941' FSL
176' FEL
 Gnd El= 5725.2
 Pad El= 5726.0
NAD83
 Lat: 39.525368897°N
 Long: 107.606975575°W
NAD27
 Lat: 39.525388287°N
 Long: 107.606362568°W
 UTM 13 NORTH
NAD 1983
 NORTHING
 14364556.442
 EASTING
 905252.350

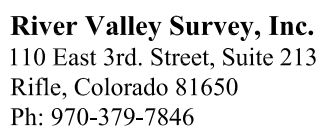
**Proposed McLin C22 Well Situate in The NE $\frac{1}{4}$ SE $\frac{1}{4}$ Section
13, Township 6 South, Range 92 West of the 6 th. Principal
Meridian, County of Garfield, State of Colorado**

I, SCOTT E. AIBNER, A REGISTERED LAND SURVEYOR, LICENSED UNDER THE LAWS OF THE STATE OF COLORADO DO HEREBY CERTIFY THAT THE SURVEY SHOWN HEREON WAS PREPARED BY RIVER VALLEY SURVEY, INC., FOR ANTERO RESOURCES, BY ME OR UNDER MY DIRECT SUPERVISION AND THAT THIS PLAT IS A TRUE REPRESENTATION THEREOF.

BY: SCOTT E. AIBNER, COLORADO REG. NO. 31143

1. LATITUDE AND LONGITUDE COORDINATES ARE DIFFERENTIALLY CORRECTED AND BASED ON PUBLISHED NGS CONTROL STATION "WDP-5". SYSTEM: UTM ZONE: 13 NORTH DATUM: NAD 1983 (CONUS)
2. ELEVATIONS ARE BASED ON NAVD OF 1983.
3. ALL BOTTOM AND TOP HOLE LOCATIONS ARE MEASURED 90 DEGREES FROM SECTION LINE.
4. USGS QUADRANGLE MAP "SILT".
5. CURRENT SURFACE LAND USE: HAY FIELD.
6. PDOP AT THE TIME OF LOCATION OF SURFACE WELL = 2.4

1. LATITUDE AND LONGITUDE COORDINATES ARE DIFFERENTIALLY CORRECTED AND BASED ON PUBLISHED NGS CONTROL STATION "WDP-5". SYSTEM: UTM ZONE: 13 NORTH DATUM: NAD 1983 (CONUS)
2. ELEVATIONS ARE BASED ON NAVD OF 1983.
3. ALL BOTTOM AND TOP HOLE LOCATIONS ARE MEASURED 90 DEGREES FROM SECTION LINE.
4. USGS QUADRANGLE MAP "SILT".
5. CURRENT SURFACE LAND USE: HAY FIELD.
6. PDOP AT THE TIME OF LOCATION OF SURFACE WELL = 2.4



Field Date: 01-19-10

Date: 09-01-10

Sheet: 1 of 11

Situate In:
SE $\frac{1}{4}$ Section 13, T6S., R. 92 W. of the
6th P.M., Garfield County, Colorado

