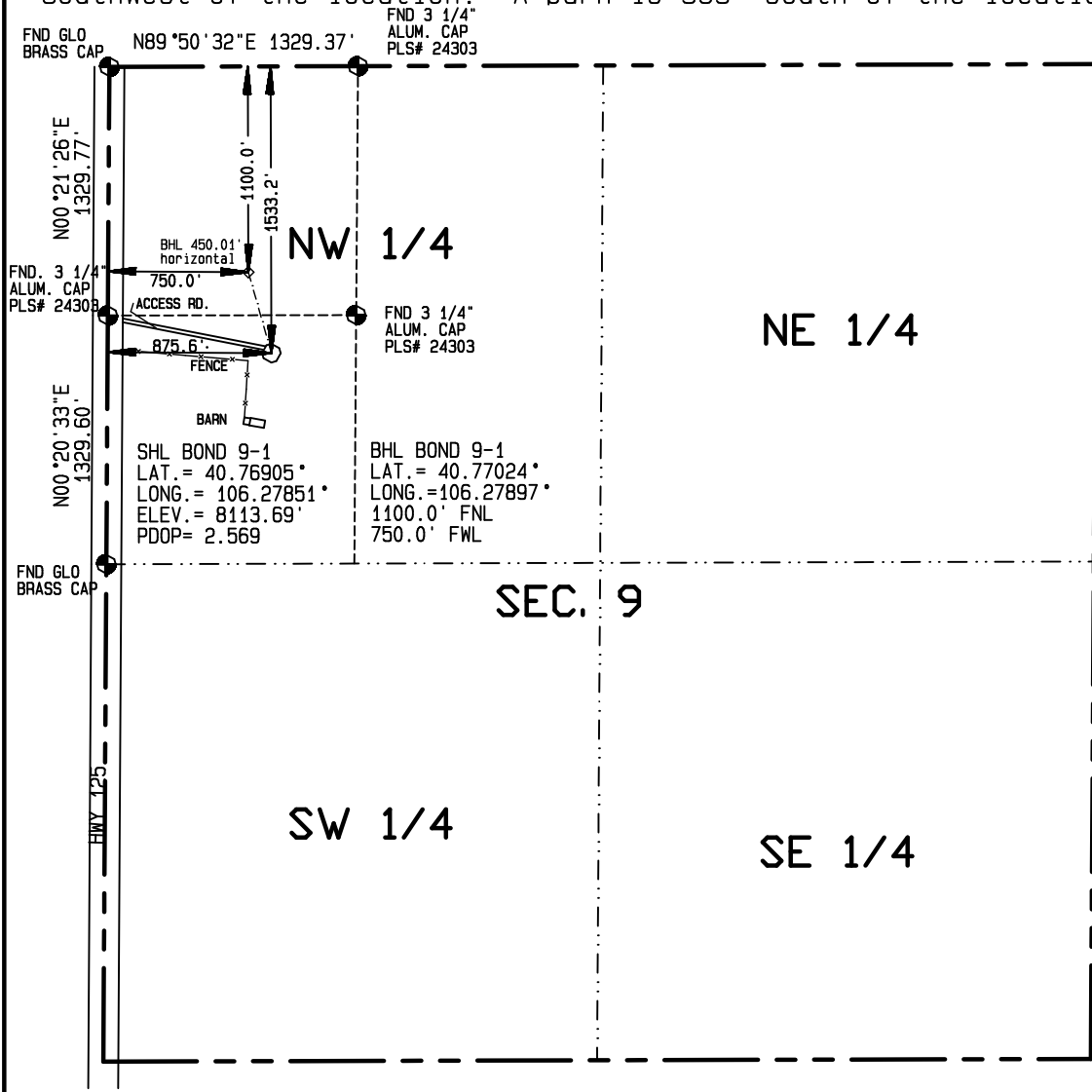


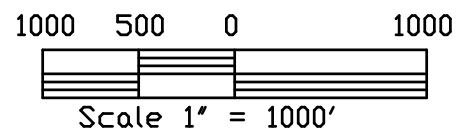
Contract Surveyors, Ltd. of Denver, Colorado has in accordance with a request from Steve Wolfe for Bonanza Creek Energy Operating Company, LLC, determined the location of BOND 9-1 to be 1533' FNL & 876' FWL Section 9, Township 9 North, Range 79 West of the 6th Principal Meridian, Jackson County, State of Colorado. The surface elevation at this point is 8114 feet above m.s.l. Improvements within 400' of location are: The corner of a wire fence is 131' Southwest of the location. A barn is 363' south of the location.



BASIS OF BEARINGS IS THE NORTH LINE OF THE NW1/4 NW 1/4 OF SEC. 9, T9N, R79W OF THE 6TH P.M. JACKSON COUNTY, CO. BEARS N89°50'32"E BETWEEN SET MONUMENTS AS DETERMINED BY GPS (NAD 83)

BASIS OF ELEVATION IS C.G.S. POINT Y 316 BY DIFFERENTIAL GPS EL. = 8135.12'

BEARINGS AND DISTANCES SHOWN ARE FIELD MEASURED AND THE LOCATION DISTANCES ARE AT RIGHT ANGLES FROM THE NEAREST NORTH-SOUTH AND EAST-WEST SECTION LINES.



I HEREBY CERTIFY THAT THIS PLAT IS AN ACCURATE REPRESENTATION OF A CORRECT SURVEY SHOWING THE LOCATION OF SAID WELLSITE:

Dan R. Griggs PLS# 38018

**CONTRACT SURVEYORS, LTD.**  
COMPLETE SURVEYING AND GLOBAL POSITIONING

2133 SOUTH BELLAIRE STREET #14  
DENVER COLORADO 80222  
(303) 756-3695

CSL# 10104-09 REVISED

DATE OF FIELD WORK: 22 APR. 2010	DATE OF DRAWING: 21 SEPTEMBER, 2010
BOND 1-9 DIRECTIONAL WELL	
SW 1/4, NW 1/4 SEC. 9, T9N, R79W	
BONANZA CREEK ENERGY OPERATING COMPANY, LLC	
JACKSON COUNTY, COLORADO	