

Well Location Plat

McLin A17

Section 12, Township 6 South, Range 92 West

Surface: McLin A17

913' FSL

2199' FWL

Gnd El= 5607.8

Pad El= 5606.0

NAD83

Lat: 39.536893516°N

Long: 107.617384897°W

NAD27

Lat: 39.536912914°N

Long: 107.616771358°W

UTM 13 NORTH

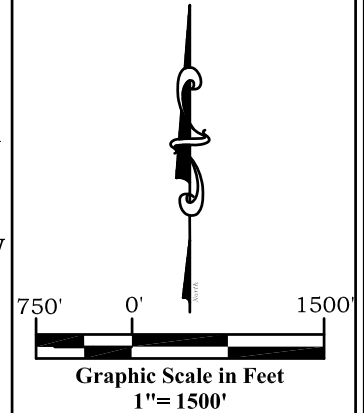
NAD 1983

NORTHING

14368838.763

EASTING

902438.663



Bottom Hole: McLin A17

109' FNL

1744' FEL

NAD83

Lat: 39.534130606°N

Long: 107.612675830°W

NAD27

Lat: 39.5341474°N

Long: 107.6120625°W

Legend

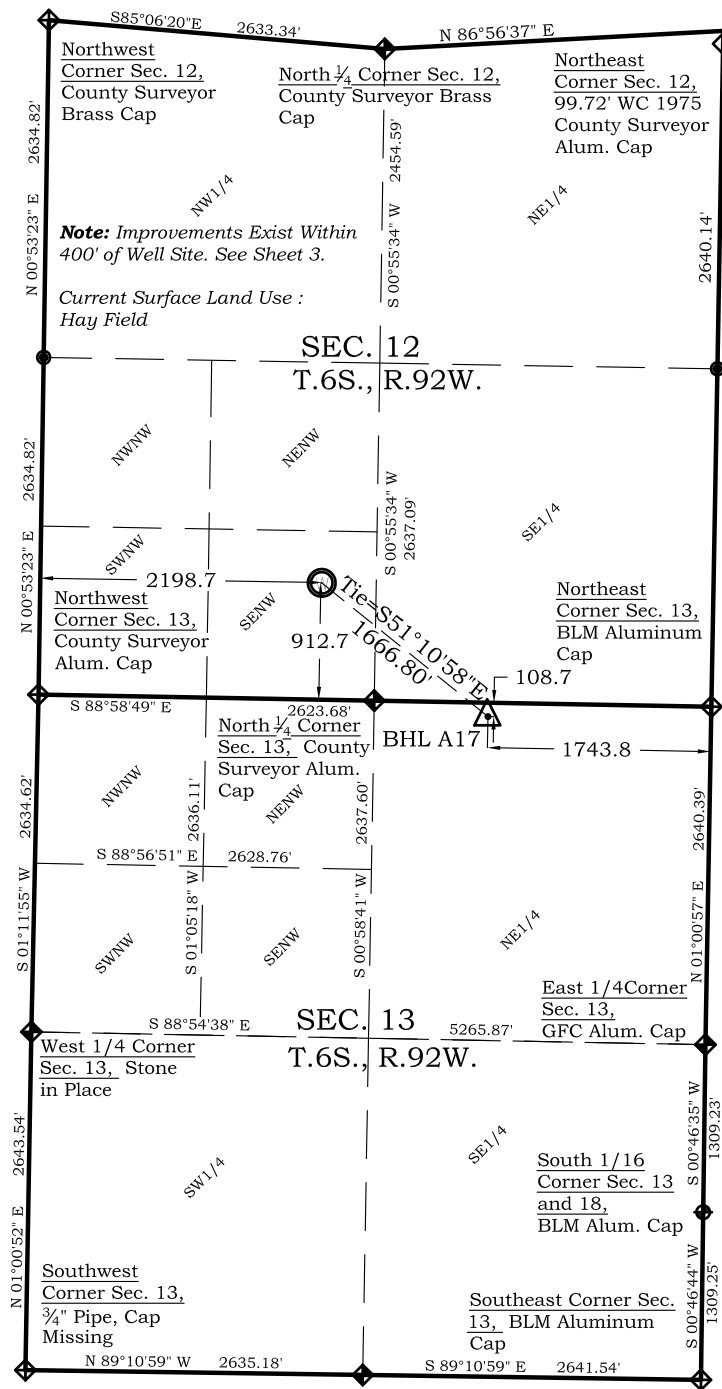
- ◈ - Field Surveyed Section Corner
- ◈ - Field Surveyed Quarter Corner
- ⊙ - Calculated Section Corner Location
- ⊙ - Field Surveyed 1/6 Corner

Prepared For Antero Resources

Proposed McLin A17 Well Situate in The SE1/4SW1/4 Section 12, Township 6 South, Range 92 West of the 6th. Principal Meridian, County of Garfield, State of Colorado

Notes:

1. LATITUDE AND LONGITUDE COORDINATES ARE DIFFERENTIALLY CORRECTED AND BASED ON PUBLISHED NGS CONTROL STATION "WDP-5". SYSTEM: UTM ZONE: 13 NORTH DATUM: NAD 1983 (CONUS)
2. ELEVATIONS ARE BASED ON NAVD OF 1983.
3. ALL BOTTOM AND TOP HOLE LOCATIONS ARE MEASURED 90 DEGREES FROM SECTION LINE.
4. USGS QUADRANGLE MAP "SILT".
5. CURRENT SURFACE LAND USE: HAY FIELD.
6. PDOP AT THE TIME OF LOCATION OF SURFACE WELL = 2.4



SURVEYOR'S CERTIFICATE

I, SCOTT E. AIBNER, A REGISTERED LAND SURVEYOR, LICENSED UNDER THE LAWS OF THE STATE OF COLORADO DO HEREBY CERTIFY THAT THE SURVEY SHOWN HEREON WAS PREPARED BY RIVER VALLEY SURVEY, INC., FOR ANTERO RESOURCES, BY ME OR UNDER MY DIRECT SUPERVISION AND THAT THIS PLAT IS A TRUE REPRESENTATION THEREOF.

31143

BY: SCOTT E. AIBNER, COLORADO REG. NO. 31143



River Valley Survey, Inc.
110 East 3rd. Street, Suite 213
Rifle, Colorado 81650
Ph: 970-379-7846

Project: McLin A PAD

Field Date: 01-19-10

Date: 08-06-10

Scale: 1"= 1000'

Sheet: 1 of 10

Well Location Plat
Prepared For Antero Resources

Situate In:
SW1/4 Section 12, T.6S., R.92 W. of the
6th P.M., Garfield County, Colorado

