

WILLIAMS PRODUCTION RMT INC EBUSINE
DO NOT MAIL - PO BOX 21218
TULSA, Oklahoma

CTR 411-25-597

NABORS 109

Post Job Report **Cement Surface Casing**

Prepared for: JOHN GRIGGS
Date Prepared: 11/22/08
Version: 1

Service Supervisor: CALDWELL, JEFFREY

Submitted by:

HALLIBURTON

The Road to Excellence Starts with Safety

Sold To #: 300721	Ship To #: 2694501	Quote #:	Sales Order #: 6321195
Customer: WILLIAMS PRODUCTION RMT INC EBUSINE	Customer Rep: HANCOCK, SCOTT		
Well Name: CTR	Well #: 411-25-597	API/UWI #:	
Field: GRAND VALLEY	City (SAP): PARACHUTE	County/Parish: Garfield	State: Colorado
Contractor: NABORS 109	Rig/Platform Name/Num: NABORS 109		
Job Purpose: Cement Surface Casing			
Well Type: Development Well	Job Type: Cement Surface Casing		
Sales Person: MARCOTTE, WAYNE	Srvc Supervisor: CALDWELL, JEFFREY	MBU ID Emp #: 369111	

Job Personnel

HES Emp Name	Exp Hrs	Emp #	HES Emp Name	Exp Hrs	Emp #	HES Emp Name	Exp Hrs	Emp #
CALDWELL, JEFFREY S	22	369111	CHRISTOFFERSON, JUSTIN Wayne	11	435308	CUSTER, JASON Richard	22	414714
KUKUS, CHRISTOPHER A	1	413952	MADRIGAL, MARK Henry	22	444368	RILEY, CHARLES Leigh	9	303325
SMITH, DUSTIN Michael	22	418015	WEAVER, RUSTY	11	457698			

Equipment

HES Unit #	Distance-1 way	HES Unit #	Distance-1 way	HES Unit #	Distance-1 way	HES Unit #	Distance-1 way
10011429	90 mile	10026606C	90 mile	10719782	90 mile	10857016	90 mile
10867094	90 mile	10867322	90 mile	10872113	90 mile	10897925	90 mile
10998512	90 mile	11071463	90 mile				

Job Hours

Date	On Location Hours	Operating Hours	Date	On Location Hours	Operating Hours	Date	On Location Hours	Operating Hours
11/21/08	4.5	0	11/22/08	17.5	6			

TOTAL Total is the sum of each column separately

Job

Formation Name	Job	Job Times
Formation Depth (MD)	Top Bottom	Date Time Time Zone
Form Type	BHST	Called Out 21 - Nov - 2008 12:20 MST
Job depth MD	2817. ft	On Location 21 - Nov - 2008 19:30 MST
Water Depth	Wk Ht Above Floor 5. ft	Job Started 22 - Nov - 2008 00:58 MST
Perforation Depth (MD)	From To	Job Completed 22 - Nov - 2008 16:05 MST
		Departed Loc 22 - Nov - 2008 17:30 MST

Well Data

Description	New / Used	Max pressure psig	Size in	ID in	Weight lbm/ft	Thread	Grade	Top MD ft	Bottom MD ft	Top TVD ft	Bottom TVD ft
-------------	------------	-------------------	---------	-------	---------------	--------	-------	-----------	--------------	------------	---------------

Sales/Rental/3rd Party (HES)

Description	Qty	Qty uom	Depth	Supplier
PLUG,CMTG,TOP,9 5/8,HWE,8.16 MIN/9.06 MA	1	EA		

Tools and Accessories

Type	Size	Qty	Make	Depth	Type	Size	Qty	Make	Depth	Type	Size	Qty	Make
Guide Shoe					Packer					Top Plug	9 5/8	1	
Float Shoe					Bridge Plug					Bottom Plug			
Float Collar					Retainer					SSR plug set			
Insert Float										Plug Container	9 5/8	1	
Stage Tool										Centralizers			

Miscellaneous Materials

Gelling Agt	Conc	Surfactant	Conc	Acid Type	Qty	Conc	%
Treatment Fld	Conc	Inhibitor	Conc	Sand Type	Size	Qty	

Fluid Data										
Stage/Plug #: 1										
Fluid #	Stage Type	Fluid Name	Qty	Qty uom	Mixing Density lbm/gal	Yield ft ³ /sk	Mix Fluid Gal/sk	Rate bbl/min	Total Mix Fluid Gal/sk	
1	H2O SPACER			bbl	.	.0	.0	5.0		
2	Lead Cement	EXTENDACEM (TM) SYSTEM (452981)	1150	sacks	12.3	2.32	11.8	5.0		
		WALNUT HULLS 10/40 , 2000 LB BAG (101278077)								
		STEELSEAL, 50 LB BAG (101236842)								
		POLY-E-FLAKE (101216940)								
		PHENO SEAL - BLEND - 40 LB (101342230)								
		FRESH WATER								
3	Tail Cement	EXTENDACEM (TM) SYSTEM (452981)	250	sacks	12.6	2.16	10.58	5.0	10.58	
		WALNUT HULLS 10/40 , 2000 LB BAG (101278077)								
		STEELSEAL, 50 LB BAG (101236842)								
		POLY-E-FLAKE (101216940)								
		PHENO SEAL - BLEND - 40 LB (101342230)								
		FRESH WATER								
4	DISPLACEMENT		213.2	bbl	8.33	.0	.0	5.0		
5	SUPER FLUSH 101			bbl	.	.0	.0	.0		
6	TOP OUT	HALCEM (TM) SYSTEM (452986)	606	sacks	15.8	1.15	5.0	2		
Calculated Values		Pressures		Volumes						
Displacement	213.2	Shut In: Instant		Lost Returns		Cement Slurry	694.2	Pad		
Top Of Cement	SURFACE	5 Min		Cement Returns	2	Actual Displacement	211	Treatment		
Frac Gradient		15 Min		Spacers	24	Load and Breakdown		Total Job	929.2	
Rates										
Circulating	RIG	Mixing	5	Displacement	5	Avg. Job	5			
Cement Left In Pipe	Amount	39.29 ft	Reason	Shoe Joint						
Frac Ring # 1 @	ID	Frac ring # 2 @	ID	Frac Ring # 3 @	ID	Frac Ring # 4 @	ID			
The Information Stated Herein Is Correct				Customer Representative Signature						

The Road to Excellence Starts with Safety

Sold To #: 300721	Ship To #: 2694501	Quote #:	Sales Order #: 6321195
Customer: WILLIAMS PRODUCTION RMT INC EBUSINE	Customer Rep: HANCOCK, SCOTT		
Well Name: CTR	Well #: 411-25-597	API/UWI #:	
Field: GRAND VALLEY	City (SAP): PARACHUTE	County/Parish: Garfield	State: Colorado
Legal Description:			
Lat:	Long:		
Contractor: NABORS 109	Rig/Platform Name/Num: NABORS 109		
Job Purpose: Cement Surface Casing	Ticket Amount:		
Well Type: Development Well	Job Type: Cement Surface Casing		
Sales Person: MARCOTTE, WAYNE	Srvc Supervisor: CALDWELL, JEFFREY	MBU ID Emp #:	369111

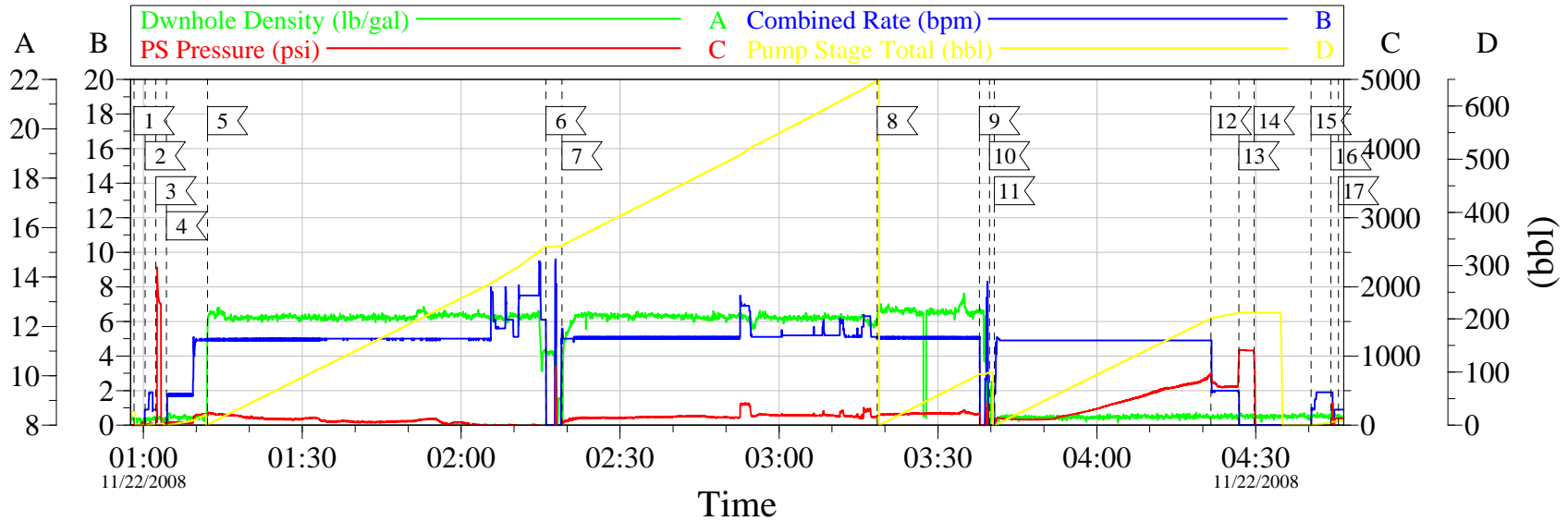
Activity Description	Date/Time	Cht #	Rate bbl/min	Volume bbl		Pressure psig		Comments
				Stage	Total	Tubing	Casing	
Call Out	11/21/2008 12:20							ELITE #10
Crew Leave Yard	11/21/2008 15:00							PLUG CONTAINER #D0792
Arrive At Loc	11/21/2008 19:30							CASING WAS STILL BEING RUN
Assessment Of Location Safety Meeting	11/21/2008 19:40							
Rig-Up Equipment	11/21/2008 23:00							
Safety Huddle	11/22/2008 00:30							
Start Job	11/22/2008 00:58							TD:2823 TP:2817 SJ:39.29 MUD:9.5 PPG 14 3/4" HOLE
Prime Pumps	11/22/2008 01:00		2	2	2		27.0	H2O
Test Lines	11/22/2008 01:02					2000.0		
Pump Spacer 1	11/22/2008 01:04		5	20	20		160.0	H2O
Pump Lead Cement	11/22/2008 01:12		5	475.2			150.0	1150 SKS 12.3 PPG 2.32 CUFT/SAK 11.8 GAL/SAK. 7 BOXES OF TUFF FIBER
Pump Tail Cement	11/22/2008 03:18		5	96.2	96.2		170.0	250 SKS 12.6 PPG 2.16 CUFT/SAK 10.58 GAL/SAK

Activity Description	Date/Time	Cht #	Rate bbl/min	Volume bbl		Pressure psig		Comments
				Stage	Total	Tubing	Casing	
Shutdown	11/22/2008 03:37							WE HAD TO SHUT DOWN ON LEAD CEMENT DUE TO A CLOG IN THE LINE FROM THE TUFF FIBER. WE SHUT DOWN FOR APPROX. 5 MINUTES TO CLEAR LINE. JOB SMOOTH FROM THERE.THEREFORE BBL COUNTER WAS OFF ON LEAD CEMENT.
Drop Plug	11/22/2008 03:39							PLUG AWAY
Pump Displacement	11/22/2008 03:40		5	213.2	211		750.0	H2O
Slow Rate	11/22/2008 04:21		2	200	200		560.0	
Bump Plug	11/22/2008 04:26		2	213.2	211		1087.0	PLUG BUMPED
Check Floats	11/22/2008 04:29							FLOATS HELD. 1 1/4 BBLS BACK. NO CIRCULATION THROUGH OUT JOB. PUMPED 10 BBLS OF SUGAR WATER DOWN PARACITE STRING.
End Job	11/22/2008 04:45							
Other	11/22/2008 04:50							WAIT TO TOP OUT
Start Job	11/22/2008 08:45							
Pump Spacer 1	11/22/2008 08:45		1	1	1	.0		TOP OUT
Pump Cement	11/22/2008 08:46		2	33	33	13.0		161 SKS 15.8 PPG 1.15 CUFT/SAK 5 GAL/SAK. 2% CACL. 5BBLS SUPERFLUSH
Pump Displacement	11/22/2008 09:01		2	1	1	10.0		H2O
Shutdown	11/22/2008 09:02							

Activity Description	Date/Time	Cht #	Rate bbl/min	Volume bbl		Pressure psig		Comments
				Stage	Total	Tubing	Casing	
End Job	11/22/2008 09:02							
Other	11/22/2008 09:10							WAIT TO TOP OUT
Start Job	11/22/2008 11:06							
Pump Spacer 1	11/22/2008 11:06		1	1	1	.0		H2O
Pump Cement	11/22/2008 11:07		2	30	30	1.0		150 SKS 15.8 PPG 1.15 CUFT/SAK 5 GAL/SAK. 2% CACL
Pump Displacement	11/22/2008 11:22		2	1	1	.0		H2O
Shutdown	11/22/2008 11:23							
End Job	11/22/2008 11:23							
Other	11/22/2008 11:30							WAIT TO TOP OUT
Start Job	11/22/2008 13:27							
Pump Spacer 1	11/22/2008 13:27		1	1	1	.0		H2O
Pump Cement	11/22/2008 13:28		2	30	30	31.0		150 SKS 15.8 PPG 1.15 CUFT/SAK 5 GAL/SAK. 2% CACL. 5 BBLS SUPERFLUSH
Pump Displacement	11/22/2008 13:44		1	1	1	.0		H2O
Shutdown	11/22/2008 13:44							
End Job	11/22/2008 13:44							
Other	11/22/2008 13:50							WAIT TO TOP OUT
Start Job	11/22/2008 15:48							
Pump Spacer 1	11/22/2008 15:48		1	1	1	.0		H2O
Pump Cement	11/22/2008 15:50		2	30	30	21.0		147 SKS 14.5 PPG 1.15 CUFT/SAK 5 GAL/SAK. 2% CACL. 5 BBLS SUPERFLUSH.
Pump Displacement	11/22/2008 16:05		2	1	1	.0		H2O
Shutdown	11/22/2008 16:05							2 BBLS OF CEMENT TO SURFACE.

Activity Description	Date/Time	Cht #	Rate bbl/ min	Volume bbl		Pressure psig		Comments
				Stage	Total	Tubing	Casing	
End Job	11/22/2008 16:05							THANK YOU FOR CHOOSING HALLIBURTON JEFF CALDWELL AND CREW.

9 5/8" Surface

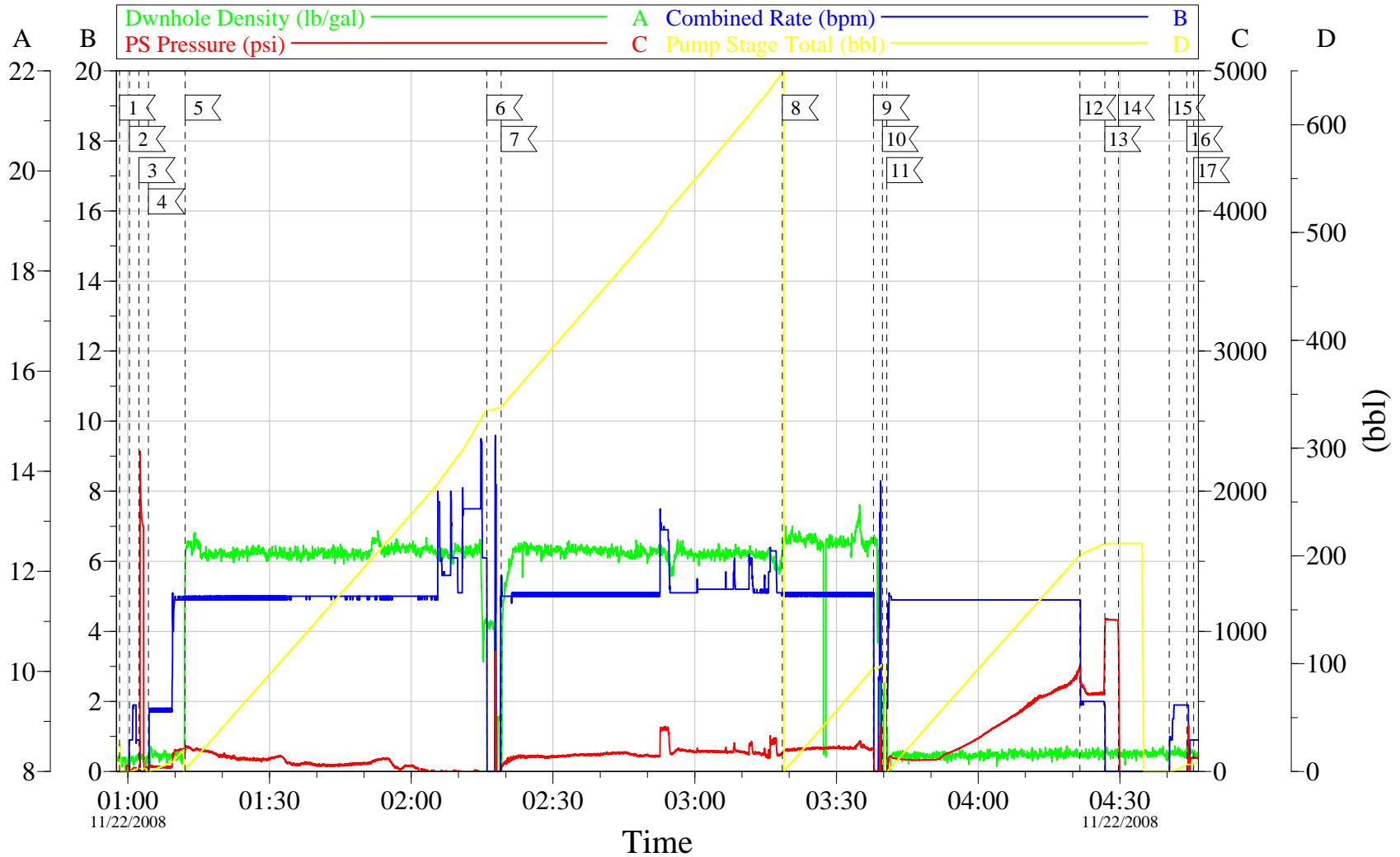


Event Log			
Intersection	PP	Intersection	PP
1 START JOB	00:58:13 1.000	2 PRIME LINES	01:00:20 -1.000
3 TEST LINES	01:02:22 11.34	4 PUMP SPACER	01:04:22 24.00
5 PUMP LEAD CEMENT	01:12:06 138.3	6 SHUT DOWN	02:15:59 -44.00
7 RESUME LEAD CEMENT	02:19:01 -20.96	8 PUMP TAIL CEMENT	03:18:33 135.6
9 SHUT DOWN	03:37:52 166.0	10 DROP TOP PLUG	03:39:43 -22.00
11 PUMP DISPLACEMENT	03:40:40 7.000	12 SLOW RATE	04:21:34 745.8
13 BUMP PLUG	04:26:49 961.0	14 CHECK FLOATS/FLOATS HELD	04:29:42 952.7
15 PUMP DOWN PARACITE	04:40:26 -22.00	16 SHUT DOWN	04:44:12 -4.000
17 END JOB	04:45:37 98.00		

Customer: Williams	Job Date: 11/22/08	Ticket #: 6321195
Well Number: CTR 411-25-597	Job Type: 9 5/8 Surface	ADC Used: Yes
Supervisor: Jeff Caldwell	Company Rep.: Scott Hancock	Pump /Operator Elite 10/Dustin Smith

TG Version G3.4.1
11-Apr-09 15:23

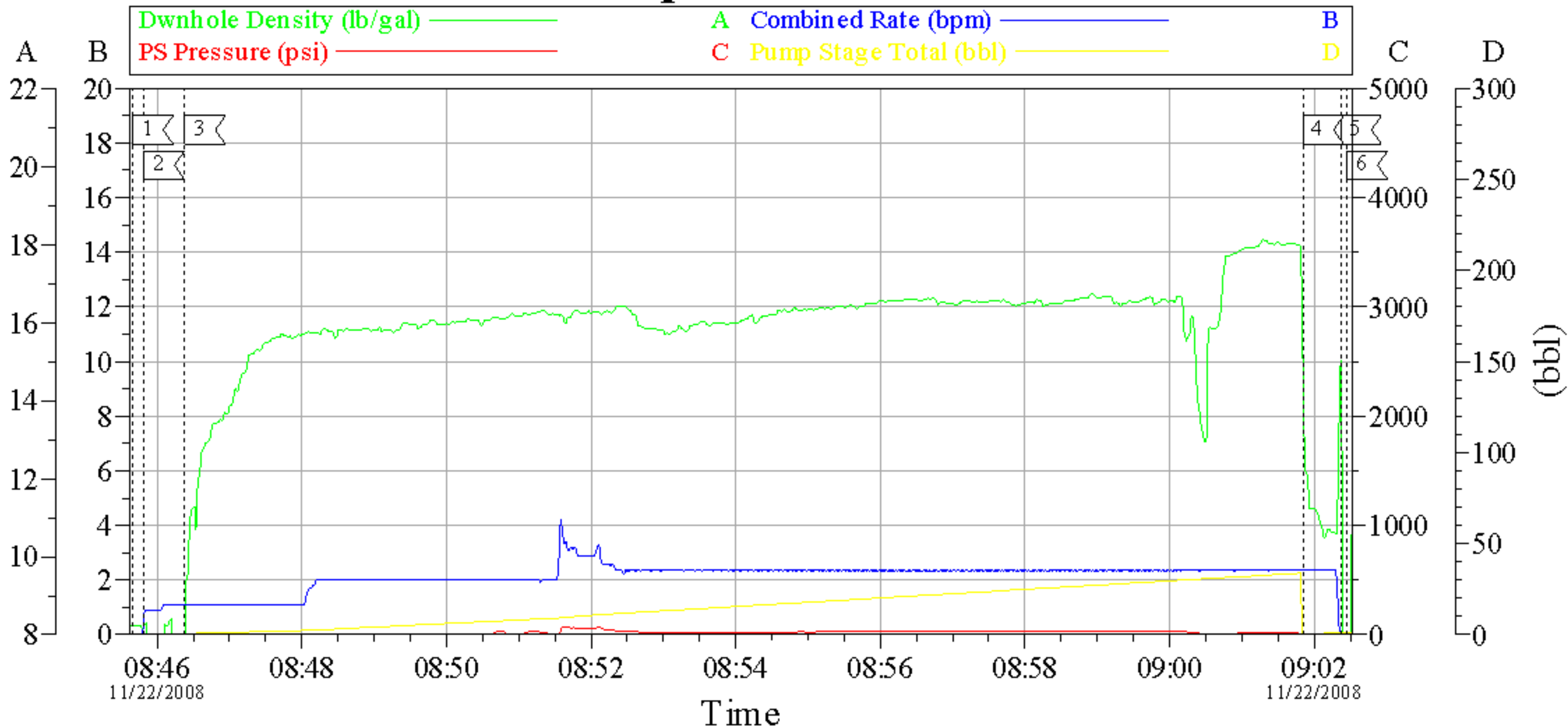
9 5/8" Surface



Customer: Williams	Job Date: 11/22/08	Ticket #: 6321195
Well Number: CTR 411-25-597	Job Type: 9 5/8 Surface	ADC Used: Yes
Supervisor: Jeff Caldwell	Company Rep.: Scott Hancock	Pump /Operator Elite 10/Dustin Smith

TG Version G3.4.1
11-Apr-09 15:23

Top Out #1



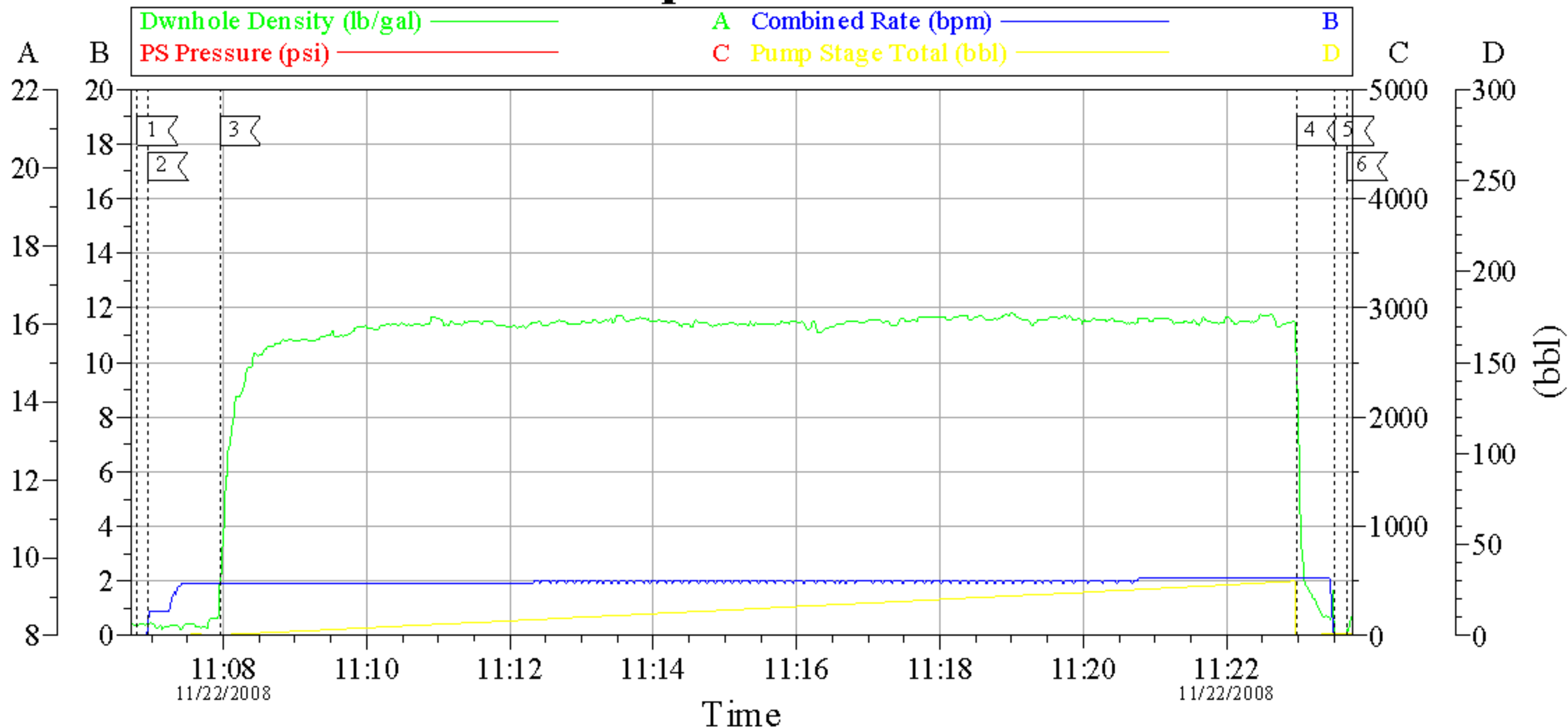
Customer: Williams
Well Number: CTR 411-25-597
Supervisor: Jeff Caldwell

Job Date: 11/22/08
Job Type: Top Out
Company Rep.: Scott Hancock

Ticket#: 6321195
ADC Used: Yes
Pump/Operator Elite 10/Dustin Smith

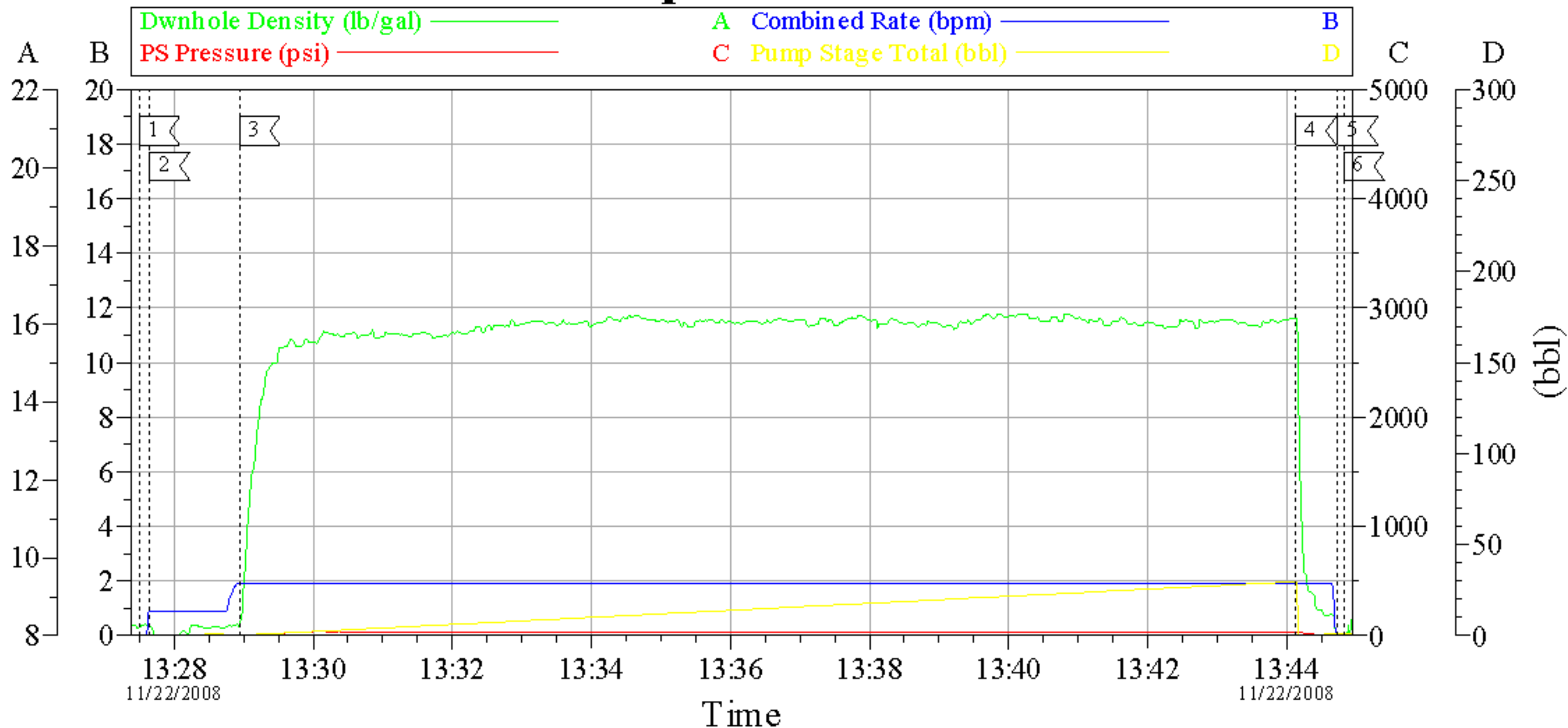
CemWin v1.7.2
22-Nov-08 09:19

Top Out #2



Customer: Williams	Job Date: 11/22/08	Ticket#: 6321195
Well Number: CTR 411-25-597	Job Type: Top Out	ADC Used: Yes
Supervisor: Jeff Caldwell	Company Rep.: Scott Hancock	Pump/Operator Elite 10/Dustin Smith

Top Out #3



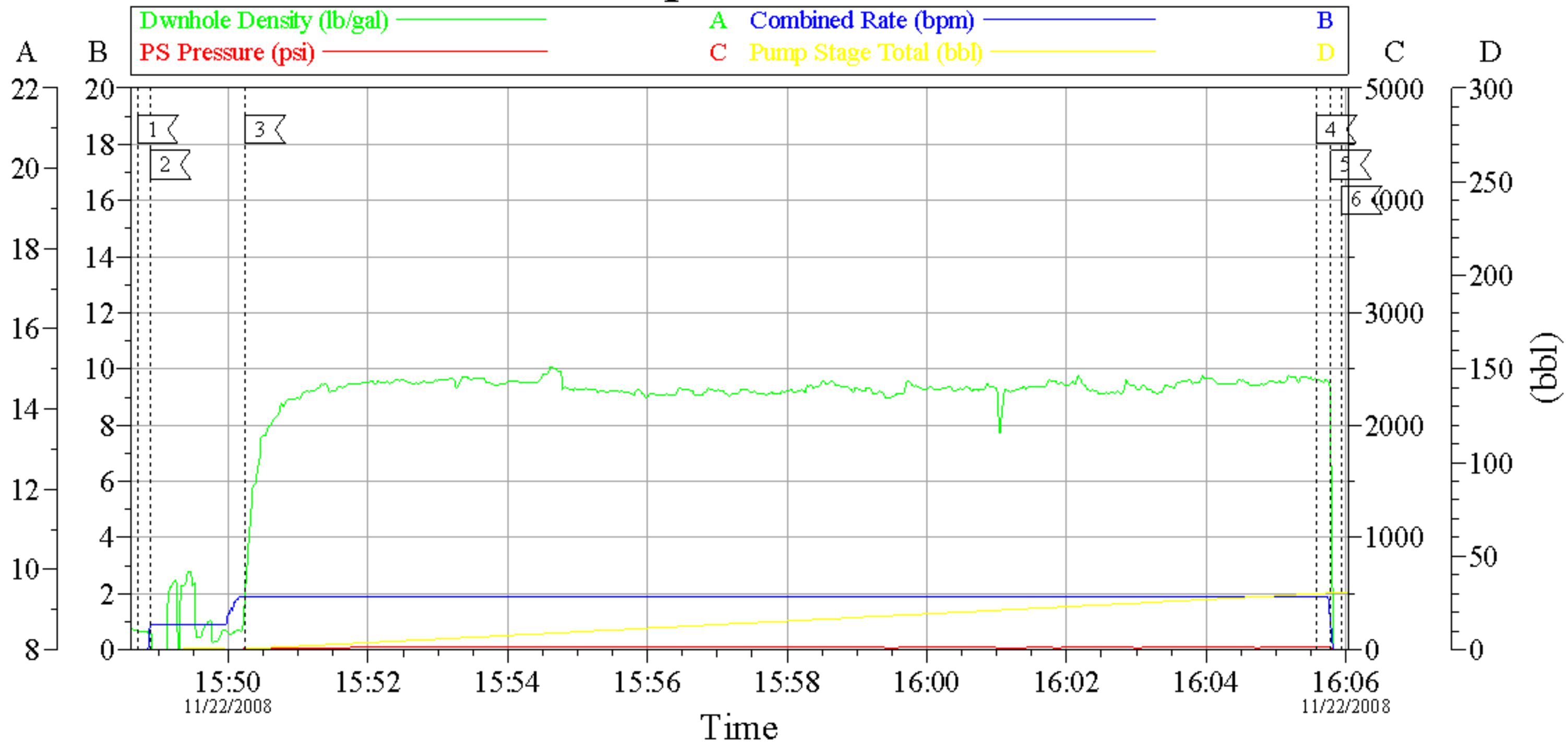
Customer: Williams
Well Number: CTR 411-25-597
Supervisor: Jeff Caldwell

Job Date: 11/22/08
Job Type: Top Out
Company Rep.: Scott Hancock

Ticket#: 6321195
ADC Used: Yes
Pump/Operator Elite 10/Dustin Smith

CemWin v1.7.2
22-Nov-08 13:52

Top Out #4



Event Log			
Intersection	PP	Intersection	PP
1 START JOB	15:48:42 -1.000	2 PUMP SPACER	15:48:53 -1.000
3 PUMP CEMENT	15:50:14 8.000	4 PUMP DISPLACEMENT	16:05:34 23.00
5 SHUT DOWN	16:05:47 14.29	6 END JOB	16:05:56 -1.139

Customer: Williams	Job Date: 11/22/08	Ticket #: 6321195
Well Number: CTR 411-25-597	Job Type: Top Out	ADC Used: Yes
Supervisor: Jeff Caldwell	Company Rep.: Scott Hancock	Pump/Operator: Elite 10/Dustin Smith