

WILLIAMS PRODUCTION RMT INC EBUSINE
DO NOT MAIL - PO BOX 21218
TULSA, Oklahoma

RWF
RWF 21-26

H&P 271/H&P/271

Post Job Summary

Cement Surface Casing

Prepared for:
Date Prepared:
Version: 1

Service Supervisor: ANDREWS, ANTHONY

Submitted by:

HALLIBURTON

The Road to Excellence Starts with Safety

The Road to Excellence Starts With Safety

Sold To #: 300721	Ship To #: 2685935	Quote #:	Sales Order #: 6214242
Customer: WILLIAMS PRODUCTION RMT INC EBUSINE		Customer Rep: SCHULTZ, MIKE	
Well Name: RWF		Well #: 21-26	API/UWI #: 05-045-16887
Field: RULSION	City (SAP): RIFLE	County/Parish: Garfield	State: Colorado
Lat: N 39.497 deg. OR N 39 deg. 29 min. 49.614 secs.		Long: W 107.859 deg. OR W -108 deg. 8 min. 29.123 secs.	
Contractor: H&P 271		Rig/Platform Name/Num: H&P271	
Job Purpose: Cement Surface Casing			
Well Type: Development Well		Job Type: Cement Surface Casing	
Sales Person: HARROLD, DALE		Srvc Supervisor: ANDREWS, ANTHONY	MBU ID Emp #: 321604

Job Personnel

HES Emp Name	Exp Hrs	Emp #	HES Emp Name	Exp Hrs	Emp #	HES Emp Name	Exp Hrs	Emp #
ANDREWS, ANTHONY Michael		321604	CRAIG, JIM		410273	DANIEL, EVERETT Dean		337325
HENSLEY, JASON Paul		447332	MILLER, KEVIN Paul		443040	SMITH, DUSTIN Michael		418015

Equipment

HES Unit #	Distance-1 way	HES Unit #	Distance-1 way	HES Unit #	Distance-1 way	HES Unit #	Distance-1 way
10025014	60 mile	10303648	60 mile	10551730C	60 mile	10624098	60 mile
10951248	60 mile	10995025	60 mile				

Job Hours

Date	On Location Hours	Operating Hours	Date	On Location Hours	Operating Hours	Date	On Location Hours	Operating Hours
10/13/08	9	4						

TOTAL Total is the sum of each column separately

Job

Formation Name	Formation Depth (MD)	Top	Bottom	Form Type	Job depth MD	Water Depth	Perforation Depth (MD)	From	To
				BHST	1786. ft				
						Wk Ht Above Floor			
					1786. ft	4. ft			

Job Times

Date	Time	Time Zone
12 - Oct - 2008	23:00	MST
13 - Oct - 2008	03:30	MST
13 - Oct - 2008	10:15	MST
13 - Oct - 2008	11:18	MST
13 - Oct - 2008	12:45	MST

Well Data

Description	New / Used	Max pressure Psig	Size in	ID in	Weight lbm/ft	Thread	Grade	Top MD ft	Bottom MD ft	Top TVD ft	Bottom TVD ft
13 1/2				13.5				.	1755.		
9 5/8	Unknown		9.625	9.001	32.3		H-40	.	1755.		

Sales/Rental/3rd Party (HES)

Description	Qty	Qty uom	Depth	Supplier
PLUG,CMTG,TOP,9 5/8,HWE,8.16 MIN/9.06 MA	1	EA		

Tools and Accessories

Type	Size	Qty	Make	Depth	Type	Size	Qty	Make	Depth	Type	Size	Qty	Make
Guide Shoe					Packer					Top Plug			
Float Shoe					Bridge Plug					Bottom Plug			
Float Collar					Retainer					SSR plug set			
Insert Float										Plug Container			
Stage Tool										Centralizers			

Miscellaneous Materials

Gelling Agt	Conc	Surfactant	Conc	Acid Type	Qty	Conc	%
Treatment Fld	Conc	Inhibitor	Conc	Sand Type	Size	Qty	

Fluid Data										
Stage/Plug #: 1										
Fluid #	Stage Type	Fluid Name	Qty	Qty uom	Mixing Density lbm/gal	Yield ft ³ /sk	Mix Fluid Gal/sk	Rate bbl/min	Total Mix Fluid Gal/sk	
1	Water Spacer		20.0	bbl	8.4	.0	.0	.0		
2	VersaCem Lead Cement	VERSACEM (TM) SYSTEM (452010)	240.0	sacks	12.3	2.38	13.75		13.75	
3	VersaCem Tail Cement	VERSACEM (TM) SYSTEM (452010)	160.0	sacks	12.8	2.11	11.76		11.76	
0.333 Gal		FRESH WATER								
4	Displacement Fluid		190.028	bbl	8.4	.0	.0	.0		
Calculated Values		Pressures		Volumes						
Displacement	137.4	Shut In: Instant		Lost Returns	N	Cement Slurry	166.1	Pad		
Top Of Cement	SURFACE	5 Min		Cement Returns	32	Actual Displacement	137.4	Treatment		
Frac Gradient		15 Min		Spacers	20	Load and Breakdown		Total Job	323.5	
Rates										
Circulating	RIG	Mixing	7	Displacement	7-4	Avg. Job	7			
Cement Left In Pipe	Amount	40.84 ft	Reason	Shoe Joint						
Frac Ring # 1 @	ID	Frac ring # 2 @	ID	Frac Ring # 3 @	ID	Frac Ring # 4 @	ID			
The Information Stated Herein Is Correct				Customer Representative Signature						

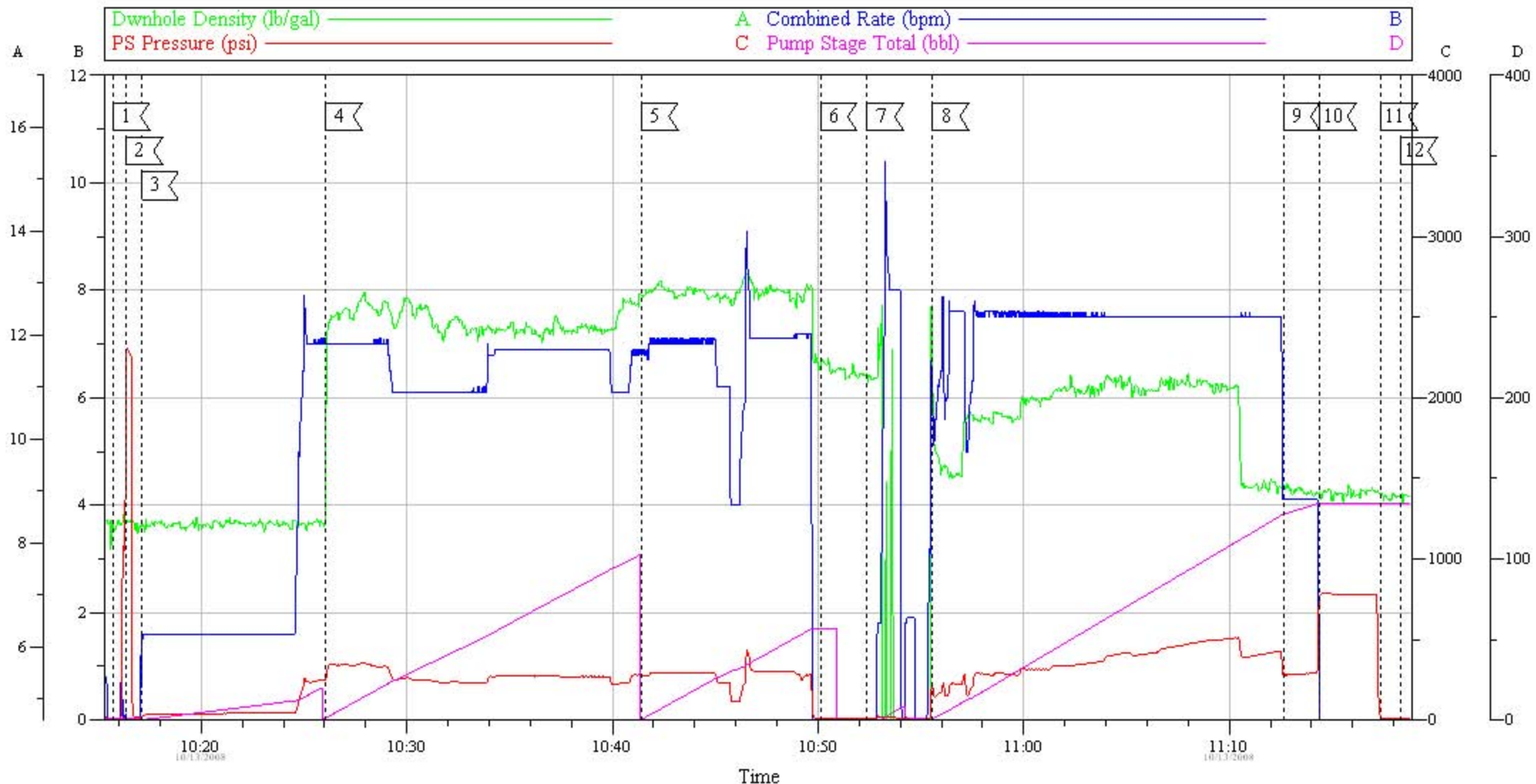
The Road to Excellence Starts with Safety

Sold To #: 300721		Ship To #: 2685935		Quote #:		Sales Order #: 6214242	
Customer: WILLIAMS PRODUCTION RMT INC EBUSINE				Customer Rep: SCHULTZ, MIKE			
Well Name: RWF			Well #: 21-26			API/UWI #: 05-045-16887	
Field: RULSION		City (SAP): RIFLE		County/Parish: Garfield			State: Colorado
Legal Description:							
Lat: N 39.497 deg. OR N 39 deg. 29 min. 49.614 secs.				Long: W 107.859 deg. OR W -108 deg. 8 min. 29.123 secs.			
Contractor: H&P 271			Rig/Platform Name/Num: H&P271				
Job Purpose: Cement Surface Casing						Ticket Amount:	
Well Type: Development Well			Job Type: Cement Surface Casing				
Sales Person: HARROLD, DALE			Srvc Supervisor: ANDREWS, ANTHONY			MBU ID Emp #: 321604	

Activity Description	Date/Time	Cht #	Rate bbl/min	Volume bbl		Pressure psig		Comments
				Stage	Total	Tubing	Casing	
Call Out	10/12/2008 23:00							
Pre-Convoy Safety Meeting	10/13/2008 00:15							
Crew Leave Yard	10/13/2008 00:30							
Arrive At Loc	10/13/2008 03:30							
Assessment Of Location Safety Meeting	10/13/2008 03:35							
Other	10/13/2008 03:45							SPOT EQUIPMENT
Pre-Rig Up Safety Meeting	10/13/2008 03:50							
Rig-Up Equipment	10/13/2008 03:55							
Pre-Job Safety Meeting	10/13/2008 09:45							
Start Job	10/13/2008 10:15							TD: 1803 TP: 1786 SJ: 40.84 MW: 10.7PPG 9 5/8" 32.3#/FT CASING
Test Lines	10/13/2008 10:16							1500 PSI TEST
Pump Spacer	10/13/2008 10:17		3	20			47.0	
Pump Lead Cement	10/13/2008 10:26		7	106			255.0	250 SKS @ 12.3 PPG 2.38 YLD
Pump Tail Cement	10/13/2008 10:41		7	60.1			274.0	160 SKS @ 12.8PPG 2.11YLD
Shutdown	10/13/2008 10:50							

Activity Description	Date/Time	Cht #	Rate bbl/min	Volume bbl		Pressure psig		Comments
				Stage	Total	Tubing	Casing	
Drop Plug	10/13/2008 10:52							JUST AFTER WE DROPPED PLUG AND BEGAN PUMPING, WE HAD TO SHUTDOWN TO RE-BUILD AIR PRESSURE ON PUMP TRUCK TO GET VALVES TO WORK. WE WERE DOWN FOR APPROX 1 MINUTE AND RESUMED WITHOUT ANY OTHER PROBLEMS.
Pump Displacement	10/13/2008 10:55		7		137.4		207.0	DISPLACEMENT WITH MUD.
Slow Rate	10/13/2008 11:12		4	125			291.0	
Bump Plug	10/13/2008 11:14		4	137.4			771.0	
Check Floats	10/13/2008 11:17							
End Job	10/13/2008 11:18							
Post-Job Safety Meeting (Pre Rig-Down)	10/13/2008 11:25							4 ADD HOURS CHARGED. CIRCULATED 32BBLs CEMENT TO PIT.
Rig-Down Equipment	10/13/2008 11:45							GOOD CIRCULATION THROUGHOUT JOB. PIPE WAS LEFT STATIC THROUGHOUT JOB. PLUG BUMPED AT CALCULATED DISPLACEMENT. FLOATS HELD.
Pre-Convoy Safety Meeting	10/13/2008 12:30							
Crew Leave Location	10/13/2008 12:45							THANK YOU FOR CHOOSING HALLIBURTON CEMENTING OF GRAND JUNCTION, COLORADO ANTHONY ANDREWS AND CREW

9 5/8" SURFACE



Event Log					
Intersection	PP	Intersection	PP	Intersection	PP
1 START JOB	10:15:43 11.49	2 TEST LINES	10:16:21 2277	3 PUMP SPACER	10:17:07 18.00
4 PUMP LEAD CEMENT	10:26:04 255.9	5 PUMP TAIL CEMENT	10:41:25 274.9	6 SHUTDOWN	10:50:07 12.00
7 DROP PLUG	10:52:24 11.00	8 PUMP DISPLACEMENT	10:55:34 207.8	9 SLOW RATE	11:12:38 291.8
10 BUMP PLUG	11:14:24 771.2	11 CHECK FLOATS	11:17:23 17.15	12 END JOB	11:18:20 11.35

Customer: WILLIAMS
Lease: RWF
Well #: 21-26

Job Date: 10/13/08
Supervisor: ANTHONY ANDREWS
Pump Truck: 10551730

Ticket #: 6214242
ADC Used?: YES
Company Rep: MIKE SCHULTZ

CemWin v1.7.2
13-Oct-08 11:18