

LITHOLOGY STRIP LOG

WellSight Systems

Scale 1:240 (5"=100') Imperial
Measured Depth Log

Well Name: Shavano No.43-35

Location: NE SE Sec.35-T13S-R46W, Cheyenne Co., CO

License Number: API No.05-017-07691

Spud Date: 1/8/10

Region: Wildcat

Drilling Completed: 1/22/10

Surface Coordinates: 2023'FSL 868'FEL

Latitude 38.87371 / Longitude -102.52195

Bottom Hole Coordinates:

Ground Elevation (ft): 4427'

K.B. Elevation (ft): 4438'

Logged Interval (ft): 700' To: 5760'

Total Depth (ft): 5760'

Formation: Pennsylvanian Morrow Sand

Type of Drilling Fluid: Chemical

Printed by WellSight Log Viewer from WellSight Systems 1-800-447-1534 www.WellSight.co

OPERATOR

Company: VECTA Oil and Gas, LTD

Address: 5920 Cedar Springs Road, Ste. 200

Dallas, TX 75235

John Beecherl

GEOLOGIST

Name: Randy Say

Company: RSay Enterprises

Address: 13524 W. 67th Way

Arvada, CO 80004

303-940-8751

Casing/ Data

8.625" surface casing set @ 413'

5.50" Production casing run to TD[5751']-ELog Depth

Total Depth(Driller) 5760'(-1322')

Total Depth(ELog) 5751'(-1313')

9 foot uphole depth correction

DSTs

No DST's Run

Comments

Black Gold Drilling

Rig No.69

Cheyenne Wells, CO

ROCK TYPES

Anhy
Bent
Brec
Cht
ClystCoal
Congl
Dol
Gyp
IgneLmst
Meta
Mrlst
Salt
ShaleShcol
Shgy
Siltst
Ss
Till

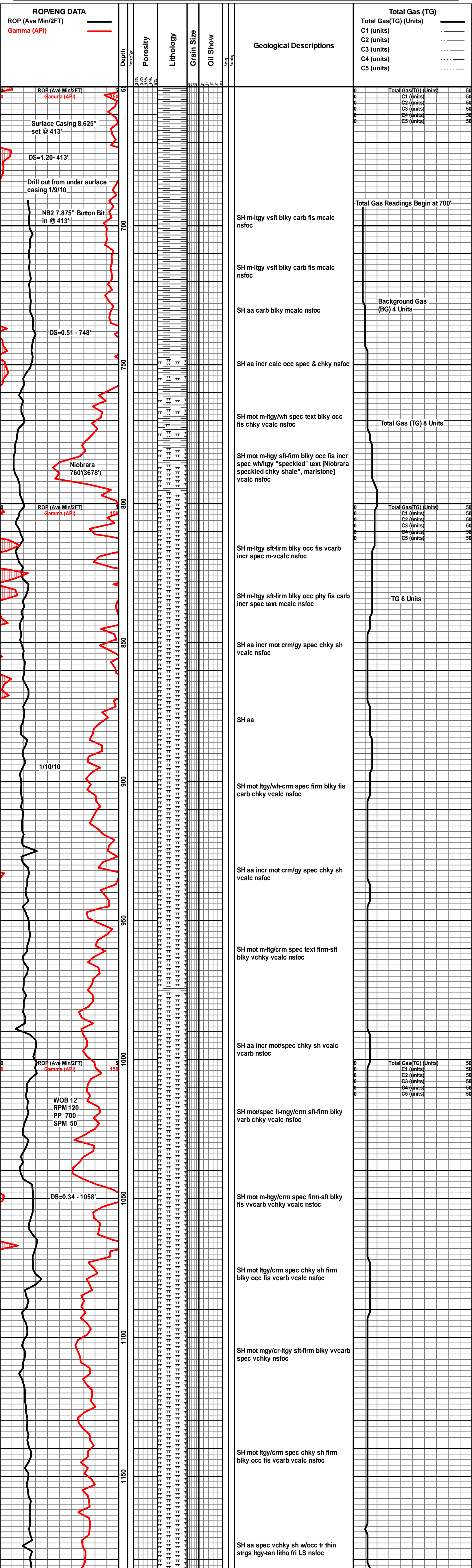
ACCESSORIES

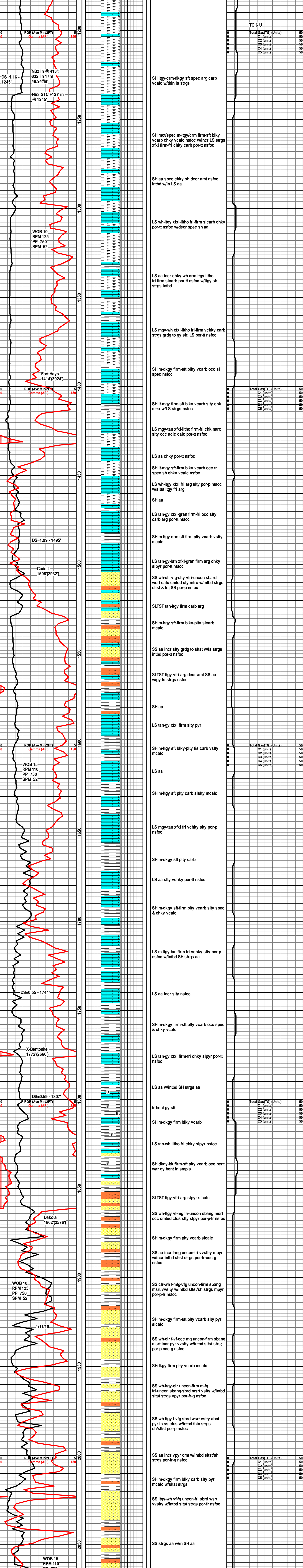
FOSSIL
Algae
Amph
Belm
Bioclst
Brach
Bryozoa
Cephal
Coral
Crin
Echin
Fish
Foram
Fossil
Gastro
Oolite
Ostra
Pelec
Pellet
PisolitePlant
Strom
MINERAL
Anhy
Arggrn
Arg
Bent
Bit
Brecfrag
Calc
Carb
Chtdk
Chtlt
Dol
Feldspar
Ferrpel
Ferr
Glau
GypHvymin
Kaol
Marl
Minxl
Nodule
Phos
Pyr
Salt
Sandy
Silt
Sil
Sulphur
Tuff

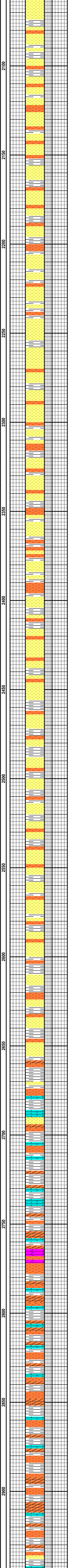
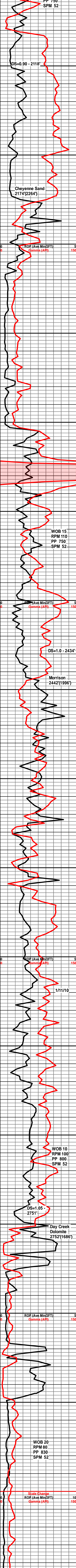
STRINGER

Anhy
Arg
Bent
Coal
DolGyp
Ls
Mrst
Sltstrg
Ssstrg

TEXTURE

Boundst
Chaiky
Cryxln
Earthy
Finexln
Grainst
Lithogr
Microxln
Mudst
Packst
Wackest





SS wh-clr-ltgy f-mg-vfg fri-uncon
sbang-sbrd mwsrt vppyr w/pyr cmt
sity por-g-fr nsfoc

abnt PYR as xline cmt in SS clus

SH mgy-dkgy sft blkly carb sity pyr
w/intbd ss/sltst strgs

SS aa incr f-mg abnt pyr cmt vsity
por-p-fr nsfoc

SS aa incr sity-vfg uncon vfri sbrd wsrt
w/intbd sltst strgs nsfoc

SH m-dkgy sft plty occ fis vcarb vvsity
w/intd ss/sltst strgs

SS ltgy-wh f-cg uncon-firm sbrd psrt
calc ccmtd vpyr w/intbd sh aa por-p
nsfoc

SH mgy-ltan sft plty carb vsity pyr
sicalc

SS aa incr m-cg uncon-firm por-tt nsfoc

SH aa incr lav-gygn sft-firm plty fis
carb vvsity-sdy pyr sicalc

SH aa

SS aa incr m-vcg uncon-firm sbrd psrt
vpyr sity por-p nsfoc

SH mot varic/ltgy-gygn-lav-dkgy
sft-firm blkly-plty fis vsity-sdy pyr
sicalc

SS wh-clr-ltgy f-cg firm-fri sbrd msrt
calc cmted clus vpyr sity por-p-tt nsfoc

SS aa incr m-cg uncon-fri vsity pyr occ
glau por-p-g nsfoc

SS ltgy-clr-wh f-mg uncon-firm sbrd
msrt calc cmt vpyr sity por-p-tt nsfoc

SH m-dkgy-tan sft-firm plty-blky fis
carb vsity sdy w/intbd strgs sltst/ss
strgs

SS aa w/sltst strgs

SH lt-dkgy firm blkly-plty vsity carb pyr
w/intbd strgs sltst/ss strgs

SH m-ltgy sft plty carb slpyr

SS wh-tan firm vf-fg grd to sltst vpyr
calc cmted clus por-tt nsfoc

SS aa incr sity w/intbd gygn-lt-dkgy-tan
SH sity pyr

SH mot ltgy-tan sft-firm plty fis sicalc
w/intbd ss/sltst strgs

SLTST tan-gybrn fri slarg pyr sicalc

SH m-dkgy-occ gygn firm blkly carb
sity

SS ltgy vfg fri arg pyr calc cmt

intbd ss/sltst/sh strgs

SH mot varic tan-gy-gn-occ redbrn
firm-sft plty-blky fis vsity-sdy mcalc

SLTST aa w/intbd ss/sh

SS wh-ltgy f-mg fri arg sity

SLTST gybrn-mgy firm-fri grd to ss
varg slpyr sicalc

SH varic m-dkgy-gygn-tan sft blkly sity
slpyr

ANHY wh-crm firm xline dns

SH gygn-gybrn firm blkly vsity-sdy
w/intbd ss/sltst strgs

tr LS tan gran vsity

SH aa incr redbrn blkly sity

SS wh-tan f-mg fri arg sity w/intbd ls
strgs

ANHY wh xfxl firm

SH ltgy-mgy-gybrn-tan firm-sft plty-blky
vvsity w/intbd sltst strgs slpyr sicalc

LS tan-gy xfxl vsity arg

SH aa incr redbrn-orng-gy firm blkly
vvsity w/intbd sltst/ls & anhy strgs

DOL tan-gy gran firm sity por-tt nsfoc

ANHY mot vltgy-wh xfxl firm-fri

LS wh xfxl firm sity slpyr

SH redbrn-mgy-orng-tan firm-sft blkly
vsity w/intbd redbrn sltst strgs sicalc
thin LS strgs

ANHY wh-ltgy xfxl firm

SLTST gybrn-redbrn firm-fri arg anhy
slpyr sicalc

SH aa

SH gybrn-redbrn-mgy firm blkly vsity
occ anhy

ANHY vltgy-wh gran-xfxl

LS tan-wh litho firm

SH orng-redbrn-mgy sft-firm blkly vvsity
w/intbd sltst & anhy strgs

SLTST redbrn fri arg

ANHY wh-vltgy xfxl-gran firm-fri w/thin
LS strgs

SH aa w/SLTST strgs redbrn-dkgy-tan
fri-firm calc cmted varg

SS wh vfg fri sity

Total Gas(TG) (Units)		50
C1 (units)		50
C2 (units)		50
C3 (units)		50
C4 (units)		50
C5 (units)		50
TG 4 U		

Total Gas(TG) (Units)		50
C1 (units)		50
C2 (units)		50
C3 (units)		50
C4 (units)		50
C5 (units)		50
TG 6 U		

Total Gas(TG) (Units)		50
C1 (units)		50
C2 (units)		50
C3 (units)		50
C4 (units)		50
C5 (units)		50

Total Gas(TG) (Units)		50
C1 (units)		50
C2 (units)		50
C3 (units)		50
C4 (units)		50
C5 (units)		50

