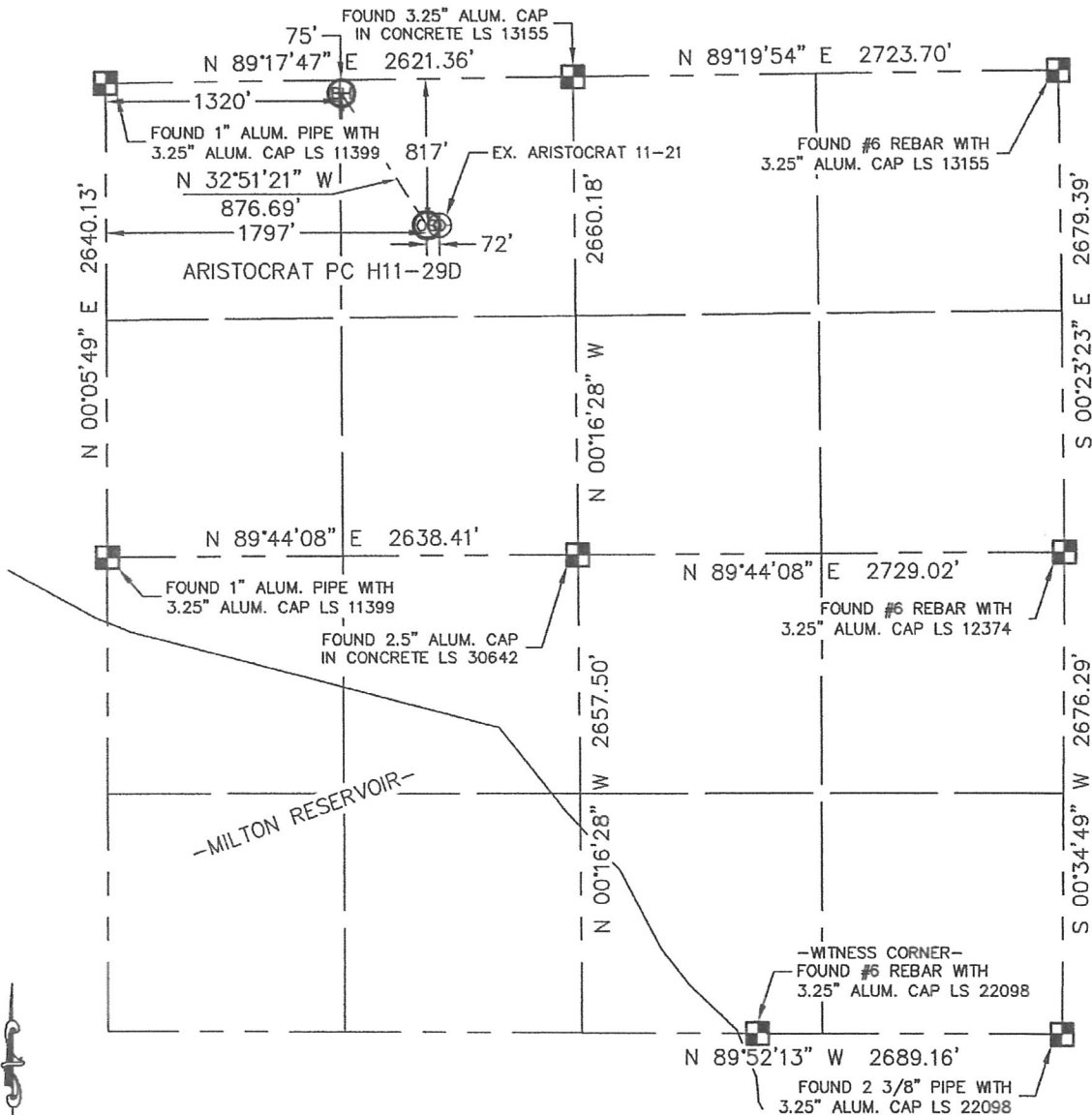


WELL LOCATION CERTIFICATE

THIS MAP DOES NOT REPRESENT A BOUNDARY SURVEY

SECTION: 11
TOWNSHIP: 3N
RANGE: 65W



In accordance with a request from Erik Van Decar with Noble Energy Inc. Lat40°, LLC has determined the surface location of the ARISTOCRAT PC H11-29D to be 817' from the NORTH line and 1797' from the WEST line and the bottom hole to be 75' from the NORTH line and 1320' from the WEST line as measured at right angles from the section line of Section 11, Township 3 North, Range 65 West of the Sixth Principal Meridian, County of Weld, State of Colorado.

I hereby state that this Well Location Certificate was prepared by me, or under my direct supervision, that the fieldwork was completed on 5/18/10, for and on behalf of Noble Energy Inc. That this is not a Land Survey Plat or an Improvement Survey Plat, and that it is not to be relied upon for establishment of fence, building, or other future improvement lines.

NOTE:

- 1) Bearings shown are Grid Bearings of the Colorado State Plane Coordinate System, North Zone, North American Datum 1983/2007. The lineal dimensions as contained herein are based upon the "U.S. Survey Foot."
- 2) Ground elevations are based on an observed GPS elevation (NAVD 1988 DATUM).
- 3) NEAREST EXISTING WELL: ARISTOCRAT 11-21 72'
- 4) IMPROVEMENTS: See VISIBLE IMPROVEMENTS exhibit for all visible improvements within 400' of disturbed area.
- 5) SURFACE USE: RANGELAND, EX. WELL SITE

SURFACE LOCATION
LATITUDE: 40.24487N
LONGITUDE: 104.63340W
PDOP: 1.2
ELEV: 4768'
1/4, 1/4: NE1/4NW1/4
NEAREST PROPERTY LINE: 446' WEST

BOTTOM HOLE
LATITUDE: 40.24690N
LONGITUDE: 104.63508W

NOTE

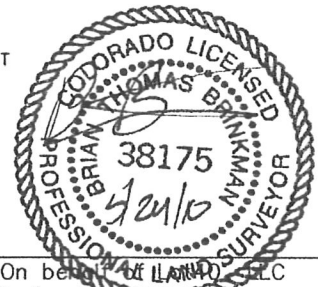
According to Colorado law, you must commence any legal action based upon any defect in this W.L.C. within three years after you discover such defect. In no event, may any action based upon any defect in this survey be commenced more than ten years after the date of the certificate shown hereon. (13-80-105 C.R.S.)

LEGEND

- = ALIQUOT MONUMENT AS DESCRIBED
- = CALCULATED POSITION

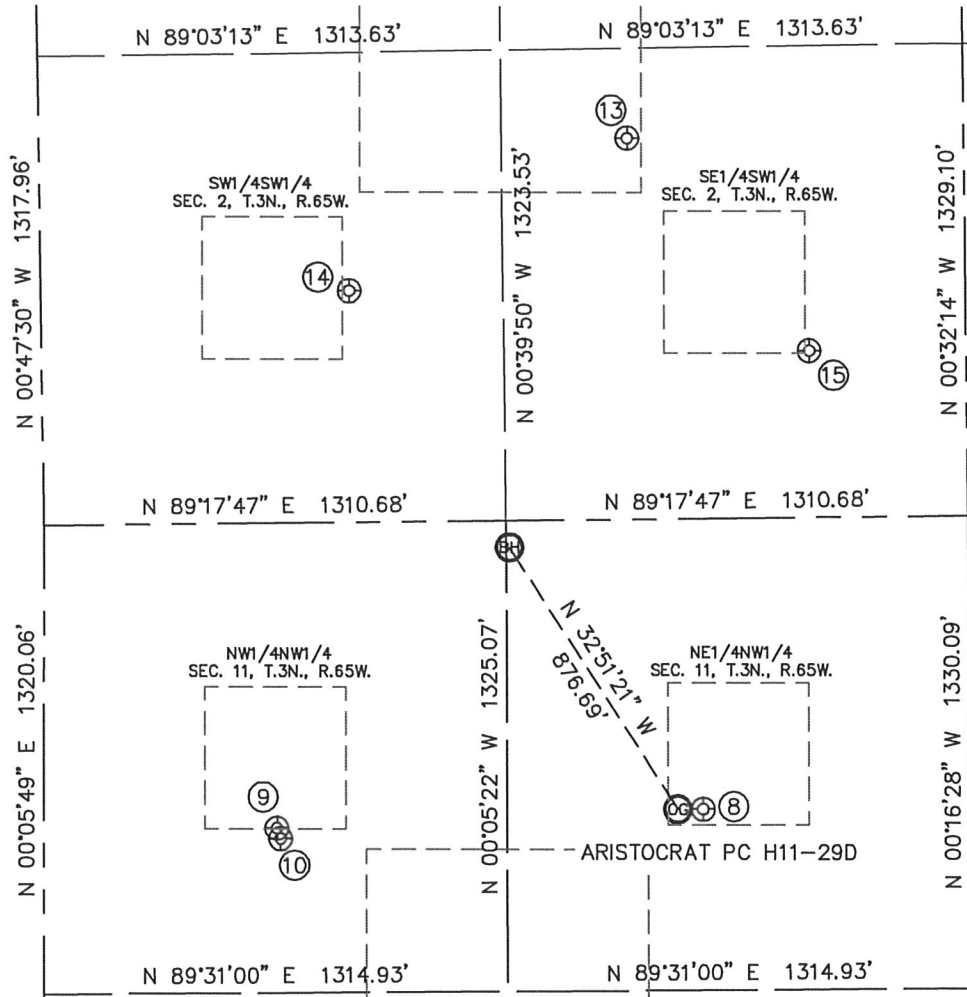
Brian T. Brinkman—On behalf of Lat40°, LLC
Colorado Licensed Professional
Land Surveyor No. 38175

PROJECT#: 2010021



SITE SKETCH

SECTION: 11
TOWNSHIP: 3N
RANGE: 65W



⑧

ARISTOCRAT 11-21
NE1/4NW1/4
818' FNL
1869' FWL
LAT-40.24487°N
LONG-104.63314°W
PDOP:1.6
ELEV: 4769'

⑨

CORNELLIUS 11-22
NW1/4NW1/4
859' FNL
661' FWL
LAT-40.24475°N
LONG-104.63747°W
PDOP:1.9
ELEV: 4783'

⑩

CORNELLIUS 11-23
NW1/4NW1/4
888' FNL
671' FWL
LAT-40.24467°N
LONG-104.63744°W
PDOP:1.3
ELEV: 4782'

⑬

JEPSEN #1
SE1/4SW1/4
1072' FSL
1669' FWL
LAT-40.25005°N
LONG-104.63384°W
PDOP:1.5
ELEV: 4770'

⑭

JEPSEN #3
SW1/4SW1/4
651' FSL
874' FWL
LAT-40.24889°N
LONG-104.63668°W
PDOP:1.2
ELEV: 4763'

⑮

JEPSEN 14-2
SE1/4SW1/4
469' FSL
2178' FWL
LAT-40.24840°N
LONG-104.63201°W
PDOP:2.0
ELEV: 4776'

