

The Road to Excellence Starts with Safety

Sold To #: 344034	Ship To #: 2764903	Quote #:	Sales Order #: 7139119
Customer: OXY GRAND JUNCTION EBUSINESS	Customer Rep: Benevides, Simon		
Well Name: CC	Well #: 697-16-42A	API/UWI #: 05-045-17607	
Field: GRAND VALLEY	City (SAP): PARACHUTE	County/Parish: Garfield	State: Colorado
Lat: N 39.522 deg. OR N 39 deg. 31 min. 18.35 secs.	Long: W 108.231 deg. OR W -109 deg. 46 min. 6.679 secs.		
Contractor: OXY	Rig/Platform Name/Num: H&P 330		
Job Purpose: Cement Surface Casing			
Well Type: Development Well	Job Type: Cement Surface Casing		
Sales Person: DUNNING, DUSTIN	Srvs Supervisor: CRONKHITE, KENT	MBU ID Emp #: 336769	

Job Personnel

HES Emp Name	Exp Hrs	Emp #	HES Emp Name	Exp Hrs	Emp #	HES Emp Name	Exp Hrs	Emp #
BROWN, TRAVIS A	22.5	396848	CHASTAIN, DERICK Allan	22.5	455848	CRONKHITE, KENT Alan	22.5	336769
DYK, KORY Stephen	22.5	421946	MAIN, CHAD R	22.5	335770	TALAROVICH, JEREMY Jay	10.5	425449
TRIPLETT, MICHAEL Anthony	22.5	447908						

Equipment

HES Unit #	Distance-1 way	HES Unit #	Distance-1 way	HES Unit #	Distance-1 way	HES Unit #	Distance-1 way
10297346	120 mile	10551730R P	120 mile	10592964	120 mile	10783473	120 mile
10822535	120 mile	10856450	120 mile	10867425	120 mile	10867531	120 mile
10897891	120 mile	10951244	120 mile	10989685	120 mile	11057894	120 mile
11071559	120 mile						

Job Hours

Date	On Location Hours	Operating Hours	Date	On Location Hours	Operating Hours	Date	On Location Hours	Operating Hours
1/25/10	17.5	8	1/26/10	5	5			
TOTAL			Total is the sum of each column separately					

Job

Formation Name	Top	Bottom	Job	Job Times	Date	Time	Time Zone
Formation Depth (MD)	0	2764	Called Out	24 - Jan - 2010	23:00	MST	
Form Type	BHST		On Location	25 - Jan - 2010	06:30	MST	
Job depth MD	2764. m	2718. m	Job Started	25 - Jan - 2010	11:53	MST	
Water Depth		4. m	Job Completed	26 - Jan - 2010	00:55	MST	
Perforation Depth (MD)	From	To	Departed Loc	26 - Jan - 2010	05:00	MST	

Well Data

Description	New / Used	Max pressure MPa	Size mm	ID mm	Weight kg/m	Thread	Grade	Top MD m	Bottom MD m	Top TVD m	Bottom TVD m
-------------	------------	------------------	---------	-------	-------------	--------	-------	----------	-------------	-----------	--------------

Sales/Rental/3rd Party (HES)

Description	Qty	Qty uom	Depth	Supplier
PLUG,CMTG,TOP,9 5/8,HWE,8.16 MIN/9.06 MA	1	EA		
PORT. DATA ACQUIS. W/OPTICEM RT W/HES	1	EA		
ADC (AUTO DENSITY CTRL) SYS. /JOB,ZI	1	JOB		

Tools and Accessories

Type	Size	Qty	Make	Depth	Type	Size	Qty	Make	Depth	Type	Size	Qty	Make
Guide Shoe					Packer					Top Plug	9.625	1	
Float Shoe					Bridge Plug					Bottom Plug			
Float Collar					Retainer					SSR plug set			
Insert Float										Plug Container	9.625	1	
Stage Tool										Centralizers			

Miscellaneous Materials													
Gelling Agt		Conc		Surfactant		Conc		Acid Type		Qty		Conc	%
Treatment Fld		Conc		Inhibitor		Conc		Sand Type		Size		Qty	
Fluid Data													
Stage/Plug #: 1													
Fluid #	Stage Type	Fluid Name	Qty	Qty uom	Mixing Density kg/m3	Yield m3/sk	Mix Fluid m3/tonne	Rate m3/min	Total Mix Fluid m3/tonne				
1	WATER SPACER		20	bbl	8.33	.0	.0	4					
2	SUPER FLUSH 101	SUPER FLUSH 101 - SBM (12199)	20	bbl	10.	.0	.0	4.0					
3	WATER SPACER		20	bbl	.	.0	.0	6.0					
4	Lead Cement	VERSACEM (TM) SYSTEM (452010)	1300	sacks	12.3	2.33	12.62	6	12.62				
5	Tail Cement	VERSACEM (TM) SYSTEM (452010)	125	sacks	12.8	2.07	10.67	6	10.67				
6	DISPLACEMENT		207	bbl	.	.0	.0	4.0					
7	Topout Cement	HALCEM (TM) SYSTEM (452986)	365	sacks	14.	1.78	7.67	2.5	7.67				
7.67 Gal		FRESH WATER											
Calculated Values			Pressures			Volumes							
Displacement	207	Shut In: Instant		Lost Returns		Cement Slurry	585.6	Pad					
Top Of Cement	SURFACE	5 Min		Cement Returns		Actual Displacement	207	Treatment					
Frac Gradient		15 Min		Spacers	60	Load and Breakdown		Total Job	852.68				
Rates													
Circulating	RIG	Mixing	6	Displacement	4	Avg. Job	6						
Cement Left In Pipe	Amount	43 ft	Reason	Shoe Joint									
Frac Ring # 1 @	ID	Frac ring # 2 @	ID	Frac Ring # 3 @	ID	Frac Ring # 4 @	ID						
The Information Stated Herein Is Correct				Customer Representative Signature									

The Road to Excellence Starts with Safety

Sold To #: 344034		Ship To #: 2764903		Quote #:		Sales Order #: 7139119	
Customer: OXY GRAND JUNCTION EBUSINESS				Customer Rep: Benevides, Simon			
Well Name: CC			Well #: 697-16-42A			API/UWI #: 05-045-17607	
Field: GRAND VALLEY		City (SAP): PARACHUTE		County/Parish: Garfield		State: Colorado	
Legal Description:							
Lat: N 39.522 deg. OR N 39 deg. 31 min. 18.35 secs.				Long: W 108.231 deg. OR W -109 deg. 46 min. 6.679 secs.			
Contractor: OXY			Rig/Platform Name/Num: H&P 330				
Job Purpose: Cement Surface Casing						Ticket Amount:	
Well Type: Development Well			Job Type: Cement Surface Casing				
Sales Person: DUNNING, DUSTIN			Srvc Supervisor: CRONKHITE, KENT			MBU ID Emp #: 336769	

Activity Description	Date/Time	Cht #	Rate m3/min	Volume m3		Pressure MPa		Comments
				Stage	Total	Tubing	Casing	
Call Out	01/24/2010 23:00							ELITE 2
Depart Yard Safety Meeting	01/25/2010 02:00							
Crew Leave Yard	01/25/2010 02:10							
Arrive At Loc	01/25/2010 06:30							
Assessment Of Location Safety Meeting	01/25/2010 07:00							
Pre-Rig Up Safety Meeting	01/25/2010 07:00							
Rig-Up Equipment	01/25/2010 08:00							
Pre-Job Safety Meeting	01/25/2010 11:30							
Rig-Up Completed	01/25/2010 11:53							
Start Job	01/25/2010 11:53							TD 2764, TP 2718, SJ 43, MUD 8.8, HOLE 14 3/4, 2500 FT PARACITE
Test Lines	01/25/2010 11:58					4800.0		
Pump Spacer	01/25/2010 12:00		4	20	20		104.0	H2O
Pump Spacer	01/25/2010 12:05		4	20	20		143.0	SUPER FLUSH
Pump Spacer	01/25/2010 12:10		6	20	20		180.0	H2O
Pump Lead Cement	01/25/2010 12:18		6	539.6	539.6		192.0	1300 SKS, 12.3 PPG, 2.33 YIELD, 12.62 GAL/SK
Pump Tail Cement	01/25/2010 13:56		6	46.08	46.08		230.0	125 SKS, 12.8 PPG, 2.07 YIELD, 10.67 GAL/SK

Activity Description	Date/Time	Cht #	Rate m3/min	Volume m3		Pressure MPa		Comments
				Stage	Total	Tubing	Casing	
Shutdown	01/25/2010 14:04							DROP PLUG
Pump Displacement	01/25/2010 14:07		4	207			280.0	
Slow Rate	01/25/2010 14:46		2	197	197		280.0	
Bump Plug	01/25/2010 14:50		2	207	207		800.0	
Check Floats	01/25/2010 14:56							FLOATS HELD, 1.5 BACK
Other	01/25/2010 15:07		1.5	10	10		200.0	PUMP SUGAR WATER DOWN PARACITE STRING
Shutdown	01/25/2010 15:16							DID NOT HAVE RETURNS THROUGH OUT JOB, DID NOT GET CEMENT TO SURFACE. WAIT TO DO TOP OUT
Other	01/25/2010 17:50							START TOP OUT 1
Pump Spacer	01/25/2010 17:50		0.5	1.5	1.5			H2O
Pump Cement	01/25/2010 18:00		2.5	44.4	44.4			140 SKS, 1.78 YIELD, 7.67 GAL/SK, 14.0 PPG
Pump Displacement	01/25/2010 18:22		2.5	2	2			H2O
Shutdown	01/25/2010 18:23							DID NOT GET CEMENT TO SURFACE WAIT TO DO TOP OUT
Other	01/25/2010 20:54							START TOP OUT 2
Pump Spacer	01/25/2010 20:55		1	1.5	1.5			H2O
Pump Cement	01/25/2010 21:16		2.5	44.4	44.4			140 SKS, 1.78 YIELD, 7.67 GAL/SK, 14.0 PPG
Pump Displacement	01/25/2010 21:29		2.5	2	2			H2O
Shutdown	01/25/2010 21:31							DID NOT GET CEMENT TO SURFACE WAIT TO DO TOP OUT
Other	01/26/2010 00:36							START TOP OUT 3
Pump Spacer	01/26/2010 00:36		2	1.5	1.5			H2O

Sold To # : 344034

Ship To # : 2764903

Quote # :

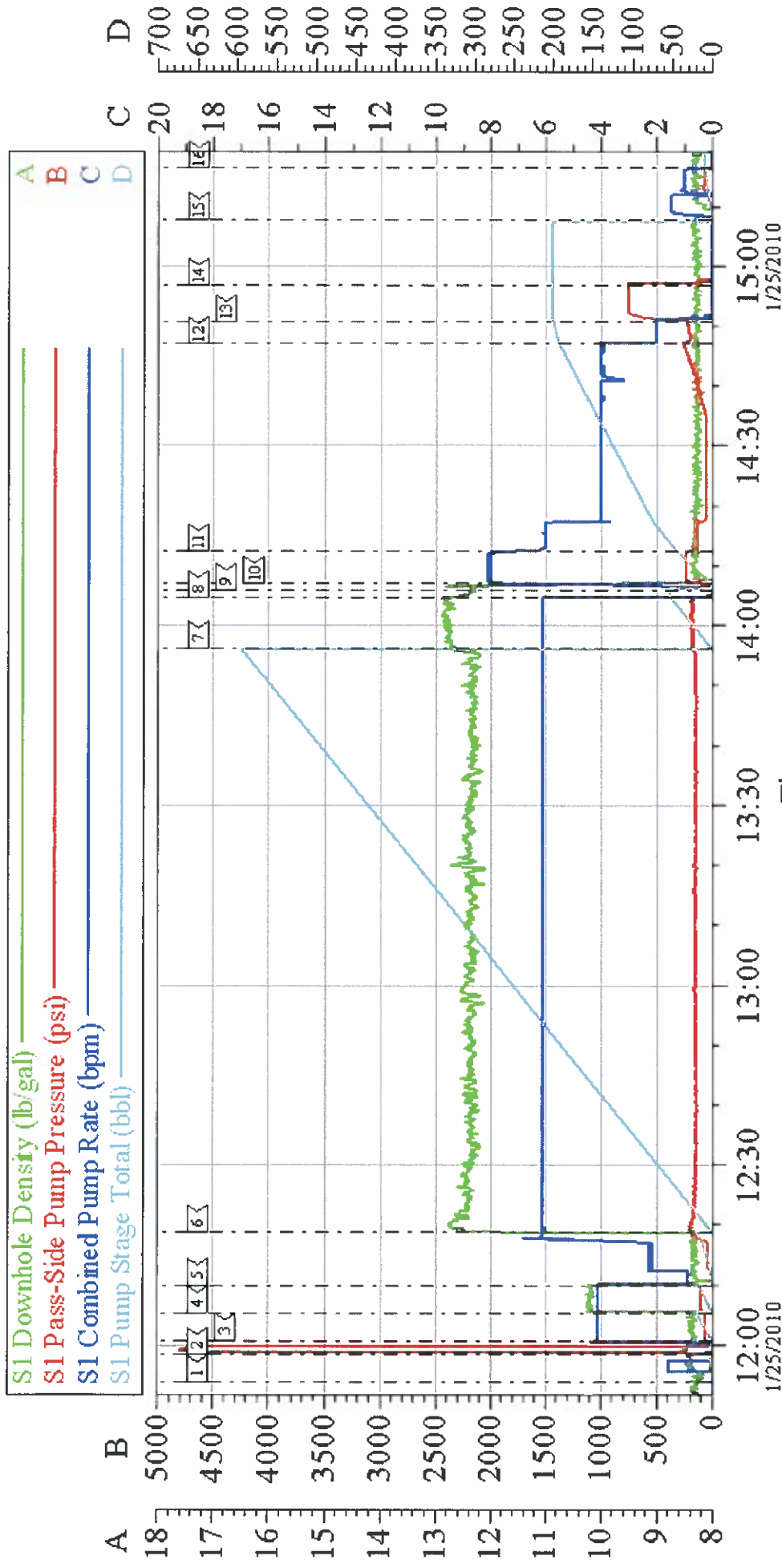
Sales Order # : 7139119

SUMMIT Version: 7.20.130

Tuesday, January 26, 2010 01:30:00

Activity Description	Date/Time	Cht #	Rate m3/ min	Volume m3		Pressure MPa		Comments
				Stage	Total	Tubing	Casing	
Pump Cement	01/26/2010 00:41		3	27	27		150.0	85 SKS, 1.78 YIELD, 7.67 GAL/SK
Pump Displacement	01/26/2010 00:53		3	1.5	1.5		150.0	H2O
Shutdown	01/26/2010 00:55							
End Job	01/26/2010 00:55							CEMENT TO SURFACE

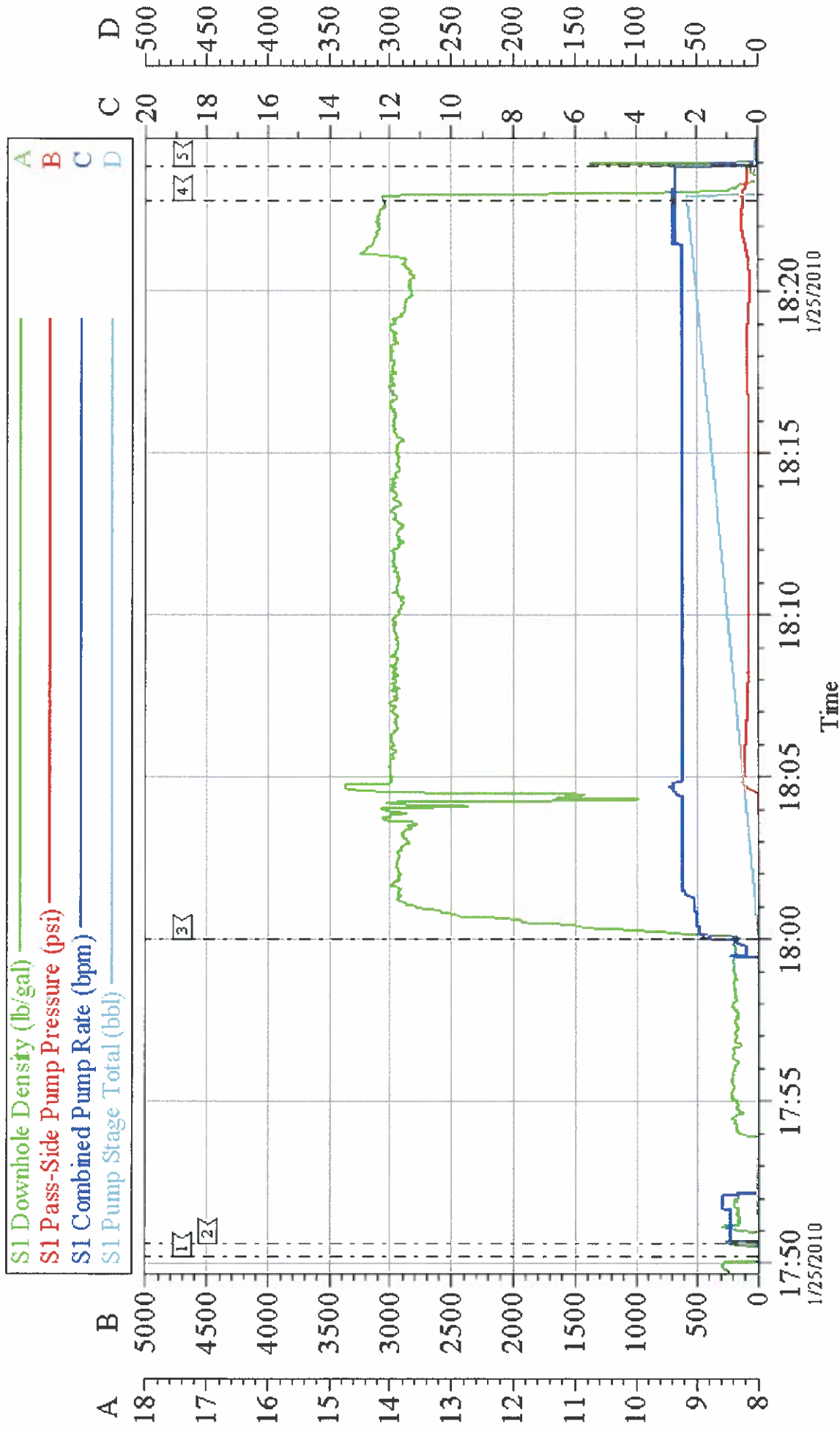
OXY 9 5/8 SURFACE



Customer: OXY	Job Date: 25-Jan-2010	Sales Order #: 7139119
Well Description: CC 697-16-42A	Job Type: 9 5/8 SURFACE	ADC Used: YES
Company Rep: SIMON BENEVIDES	Cement Supervisor: KENT CRONKHITE	Elite #: 2

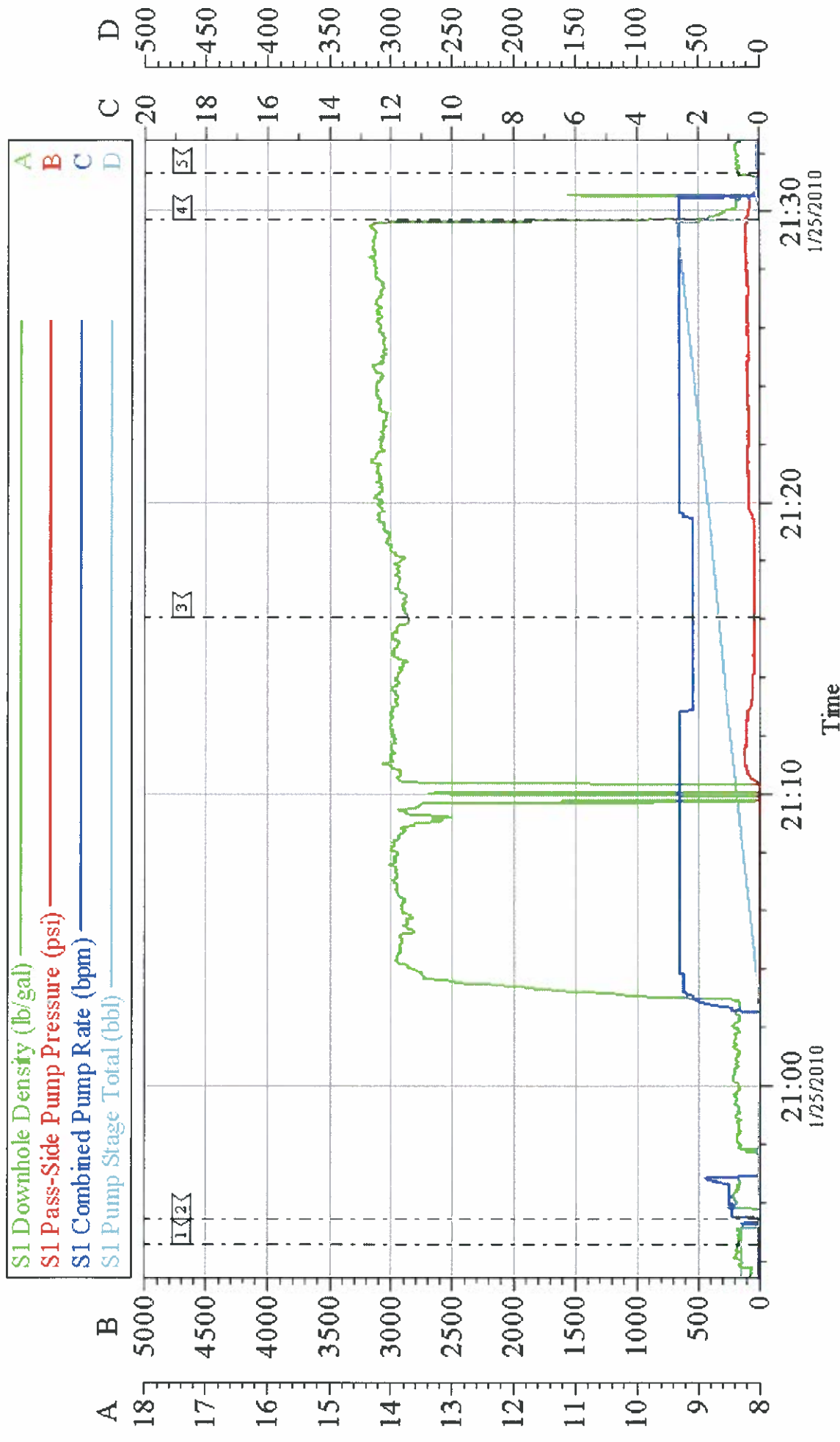
OXY

TOP OUT #1



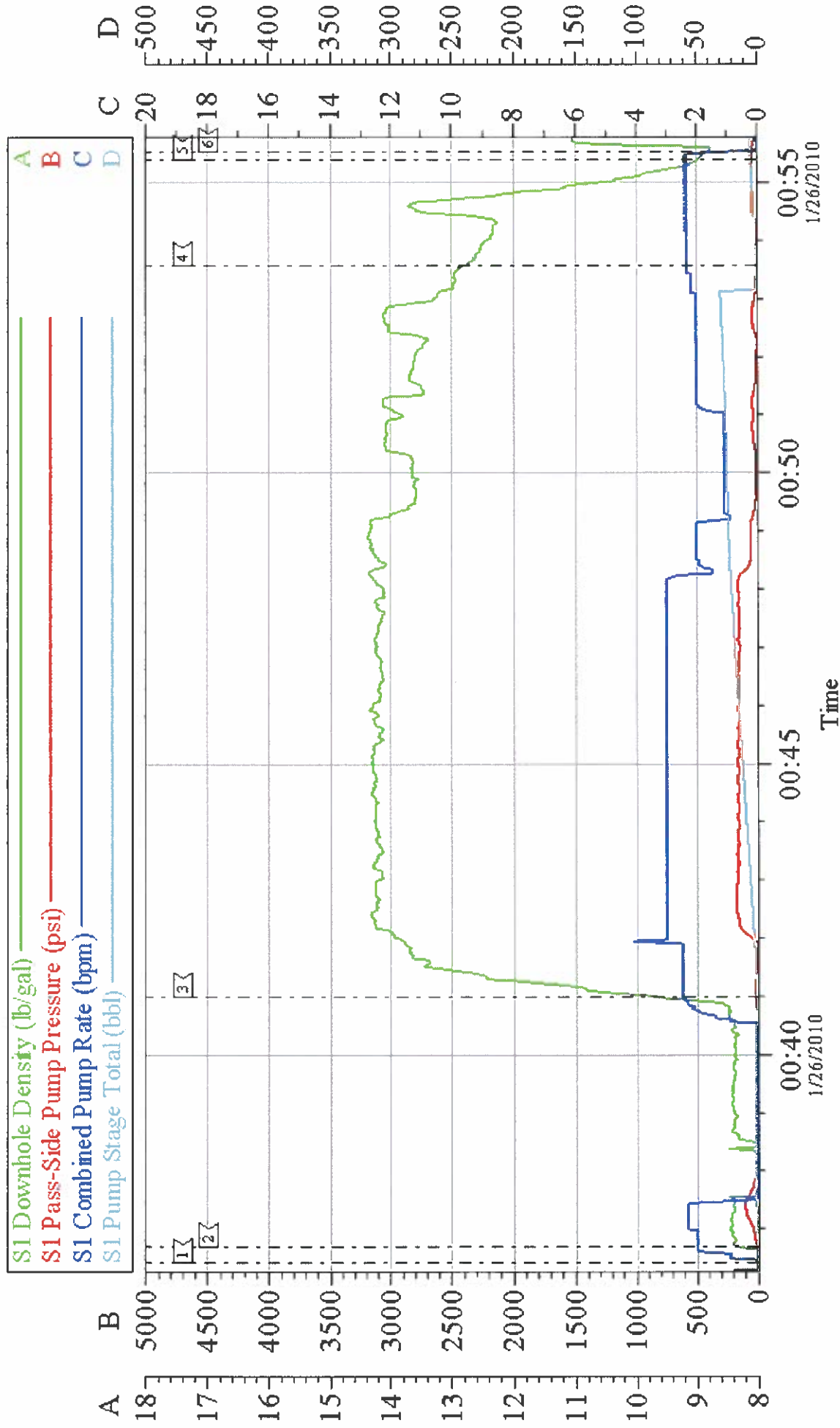
Customer: OXY	Job Date: 25-Jan-2010	Sales Order #: 7139119
Well Description: CC 697-16-42A	Job Type: TOP OUT	ADC Used: YES
Company Rep: SIMON BENEVIDES	Cement Supervisor: KENT CRONKHITE	Elite #: 2

OXY TOP OUT #2



Customer: OXY Well Description: CC 697-16-42A Company Rep: SIMON BENEVIDES	Job Date: 25-Jan-2010	Sales Order #: 71391119
	Job Type: TOP OUT	ADC Used: YES
	Client Supervisor: KENT CRONKHITE	Elite #: 2

OXY TOP OUT # 3



Customer: OXY	Job Date: 25-Jan-2010	Sales Order #: 7139119
Well Description: CC 697-16-42A	Job Type: TOP OUT	ADC U sed: YES
Company Rep: SIMON BENEVIDES	Can end Supervisor: KENT CRONKHITE	Elite #: 2