

**CERTIFICATION OF OWNER NOTIFICATION**  
**Order No. 1R-100 – 318A Well Locations**

**RAY NELSON 4-8-32**

1. EnCana Oil & Gas (USA) Inc. (EnCana) proposes to drill a boundary line well in accordance with Rule 318A, Order No. 1R-100. The well will be drilled at a surface location of 1558' FSL and 1187' FEL in Sec 32, T2N-R68W and bottomhole location of 50' FSL, 2612' FWL in Sec 32, T2N-R68W, Weld County, Colorado, as delineated on the attached location plat.
2. In accordance with Section e (6) of the Rule, EnCana notified by certified mail the owners of the proposed boundary well of the proposal to drill the well and the designated wellbore spacing unit.
3. EnCana hereby certifies that no objection to the proposed wellbore or the proposed wellbore spacing unit was received.
4. EnCana requests that the Director administratively approve the boundary line well and the wellbore spacing unit for the Ray Nelson 4-8-32.

**ENCANA OIL & GAS (USA) INC.**

**By:** 

**Title:** Regulatory Analyst

**Date:** 9/30/10

RECEIVED

OCT 04 2010

COGCC

Ray Nelson 4-8-32  
SESW Sec. 32 T2N-R68W

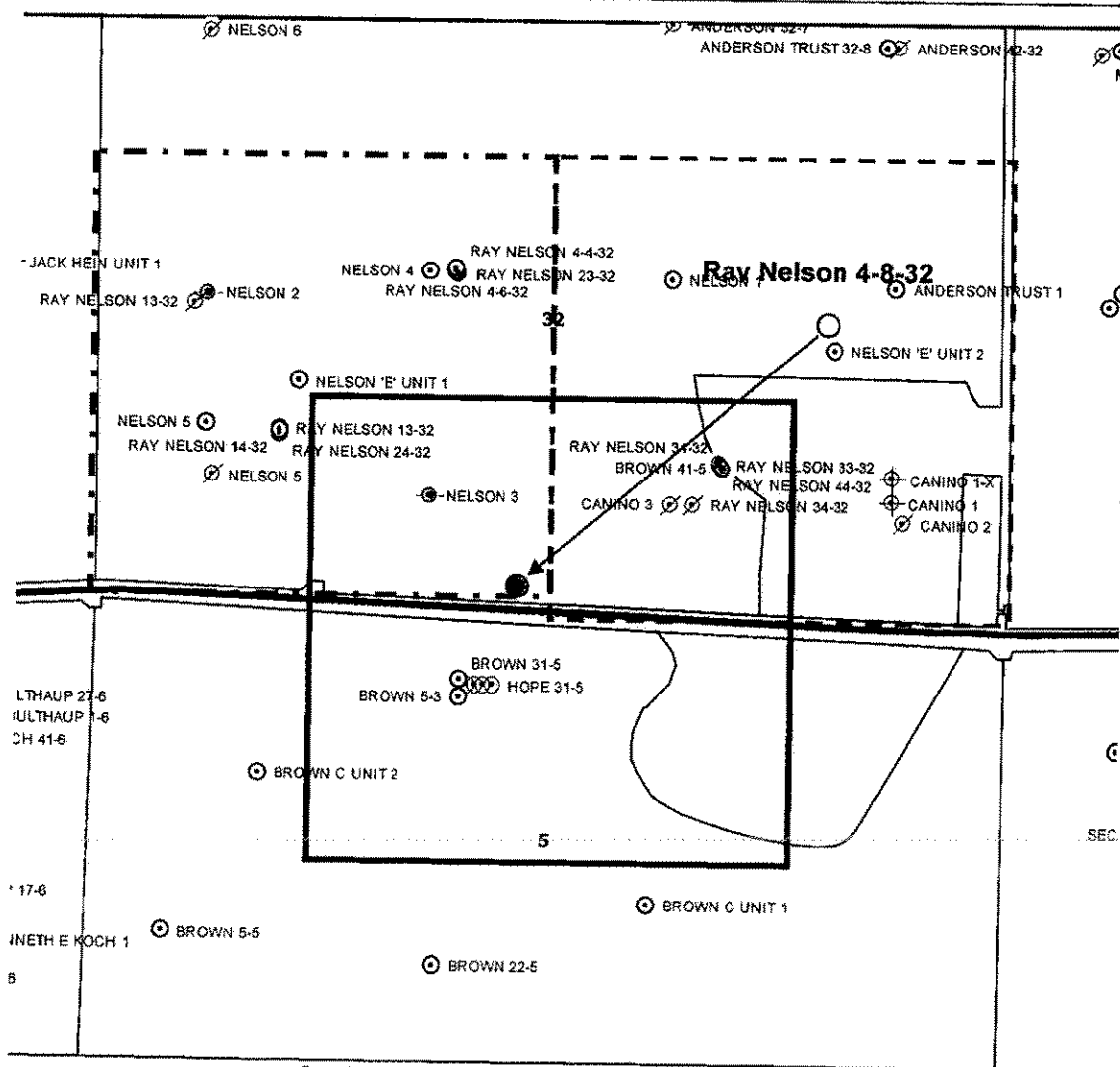
Purple outline = Proposed 160 acre spacing unit in the SE/4SW/4 and SW/4SE/4 of Section 32-2N-68W and the NE/4NW/4 and NW/4NE/4 of Section 5-1N-68W

Green dashed outline = SE/4 (location of surface)

Blue dashed outline = SW/4 (location of bottomhole)

Bottom hole located at the center of the south line of Section 32 T2N-R68W

This quarter-section has less than 8 bottom hole wells producing from the Codell, Niobrara, and J Sand formations.



○ = Surface location

● = Bottom hole location