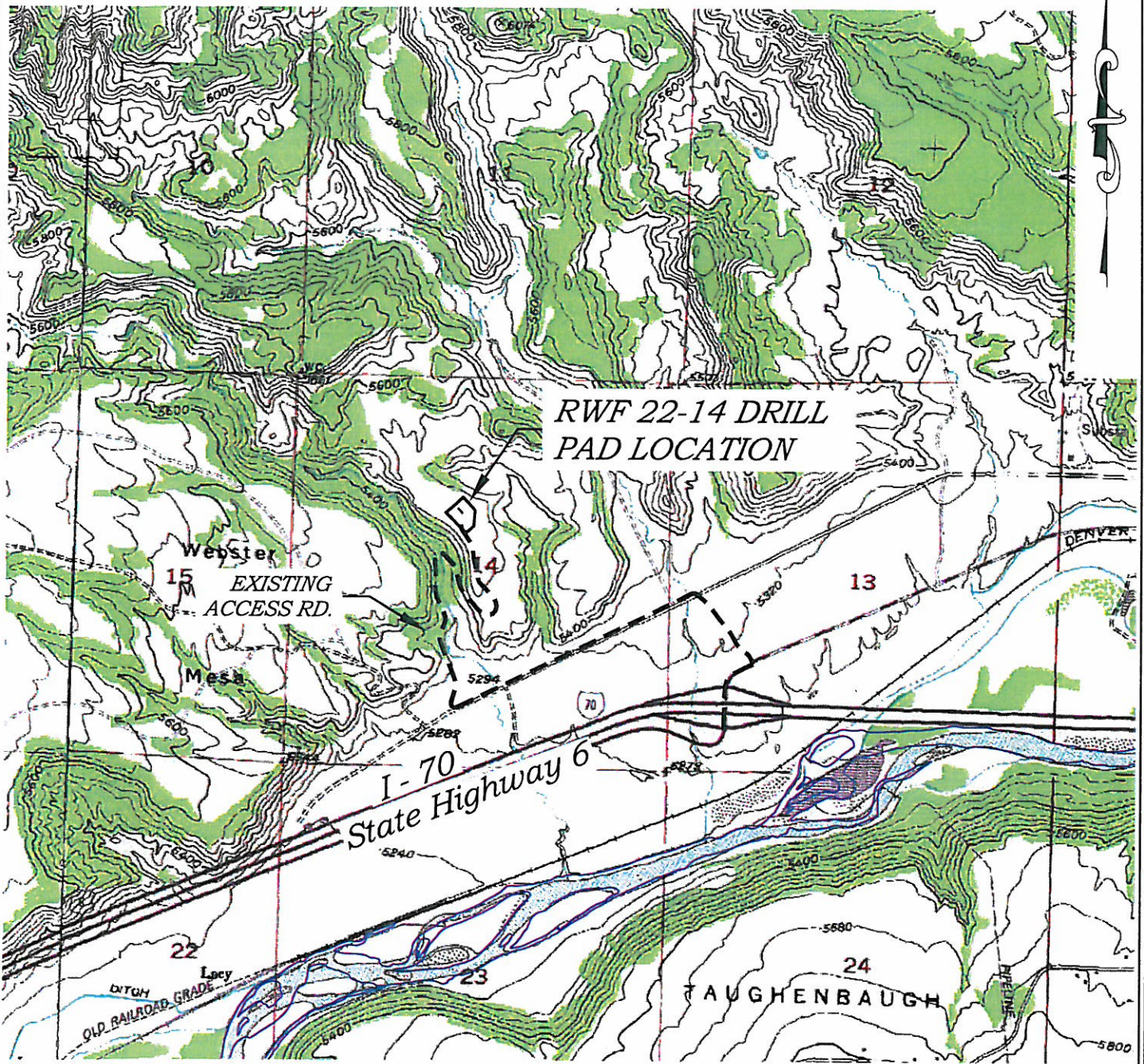


Section 14
T. 6 S., R. 94 W



1000 0 2000

GRAPHIC SCALE IN FEET
1 INCH = 2000 FEET

ACCESS DESCRIPTION:

FROM THE EAST BOUND I-70 WEST RIFLE OFF RAMP AT STATE HIGHWAY 6 PROCEED LEFT ALONG STATE HIGHWAY 6 IN A NORTHERLY TO EASTERLY DIRECTION ± 0.2 MILES TO THE INTERSECTION WITH A DIRT/GRAVEL ROAD, PROCEED LEFT IN A NORTHWESTERLY DIRECTION ± 0.2 MILES TO THE INTERSECTION WITH A DIRT/GRAVEL ROAD, PROCEED LEFT IN A SOUTHWESTERLY DIRECTION ± 0.7 MILES TO THE INTERSECTION WITH A DIRT/GRAVEL ROAD, PROCEED RIGHT IN A NORTHERLY DIRECTION ± 0.9 MILES TO THE RWF 22-14 DRILL PAD LOCATION, AS SHOWN HEREON.

Construction Plan Prepared for:

Williams. Williams Production, RMT

RWF 22-14 Drill Pad - Plat 5
ACCESS ROAD MAP

134 East Third Street
Rifle, Colorado 81650
Ph. (970) 625-1330
Fax (970) 625-2773



BOOKCLIFF
Survey Services, Inc.

SCALE: 1" = 2000'
DATE: 8/19/10
PLAT: 5 of 9
PROJECT: Williams Valley
DFT: DPM