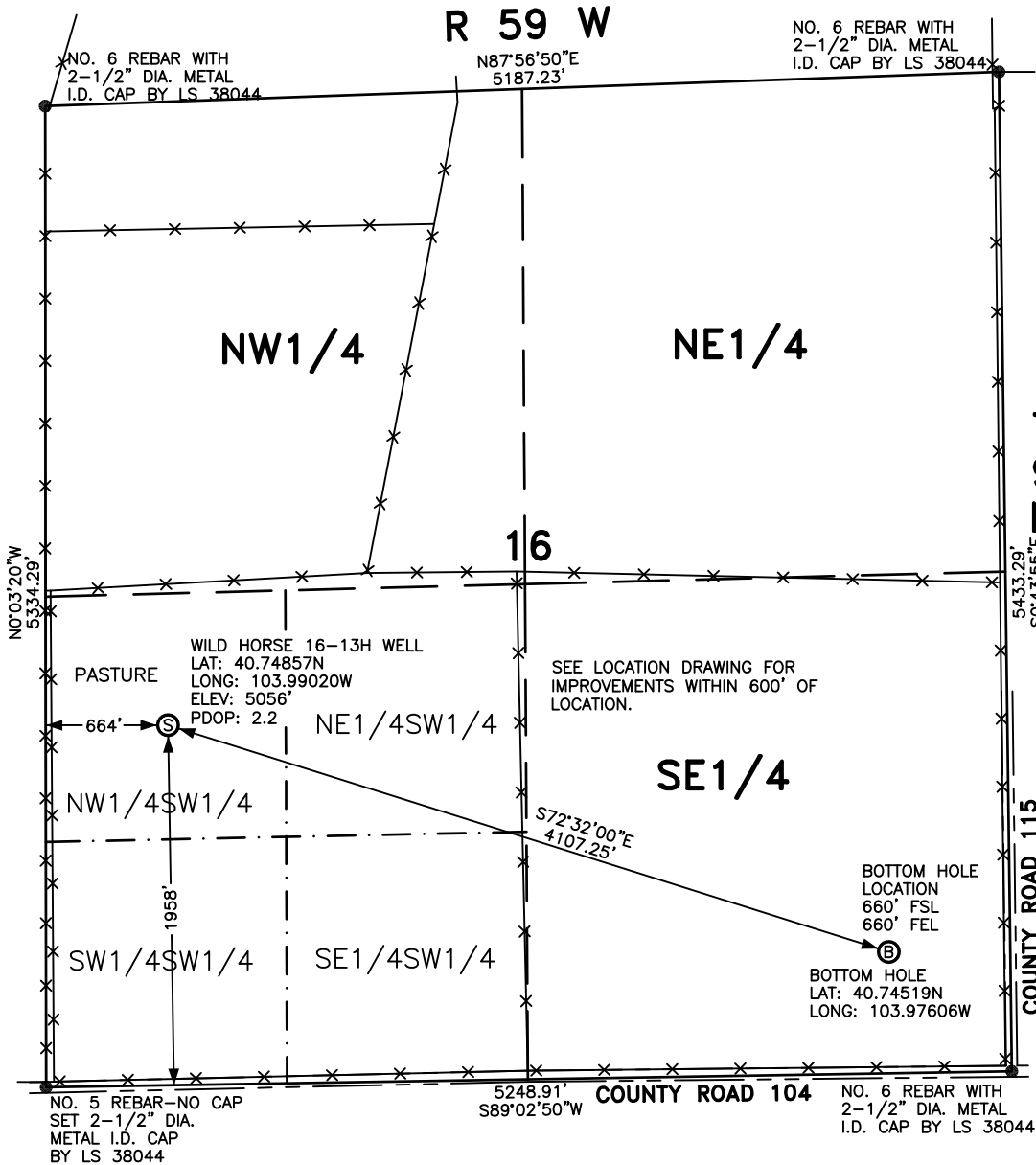


# WELL LOCATION FOR WHITING OIL AND GAS CORPORATION

WILD HORSE 16-13H



## NOTES

BEARINGS SHOWN HEREON ARE BASED UPON RTK GPS OBSERVATIONS

SEE LOCATION DRAWING FOR IMPROVEMENTS WITHIN 600' OF LOCATION.

USGS QUAD MAP:  
RAYMER NW, COLO.

LAT/LONG VALUES ARE NAD83

ELEVATIONS BASED UPON NGS  
OPUS SOLUTION NAVD 88 DATUM

ALL DISTANCES TO SECTION LINES  
ARE MEASURED PERPENDICULAR  
TO AND ARE AT RIGHT ANGLES  
TO SAID SECTION LINES.

## LEGEND

- ⊙ FIELD SURVEYED WELL LOCATION
- ⊙ FIELD SURVEYED BOTTOM HOLE LOCATION

== == == ROAD

--- --- FENCE



SCALE: 1" = 1000'



SCALE IN FEET

THIS WELL LOCATION PLAT HAS BEEN PREPARED FOR WHITING OIL AND GAS CORPORATION, TO LOCATE THE WILD HORSE 16-13H WELL BEING 664 FEET FROM THE WEST LINE AND 1958 FEET FROM THE SOUTH LINE IN THE NW1/4SW1/4 OF SECTION 16, TOWNSHIP 9 NORTH, RANGE 59 WEST OF THE 6TH P.M., WELD COUNTY, COLORADO. THE SURFACE ELEVATION AT THIS POINT IS 5056 FEET. THIS IS NOT A LAND SURVEY PLAT.



## LEIBERT-McATEE & ASSOCIATES, INC.

P.O. BOX 442 615 SOUTH TENTH AVENUE  
STERLING, CO 80751 970-522-1960

|                     |                   |                              |
|---------------------|-------------------|------------------------------|
| FIELD DATE: 9-13-10 | DWG DATE: 9-16-10 | GPS OPERATOR:<br>DARREN VEAL |
| WILD HORSE 16-13H   | DWG NO. 1110-10   | SHEET 1 OF 1                 |