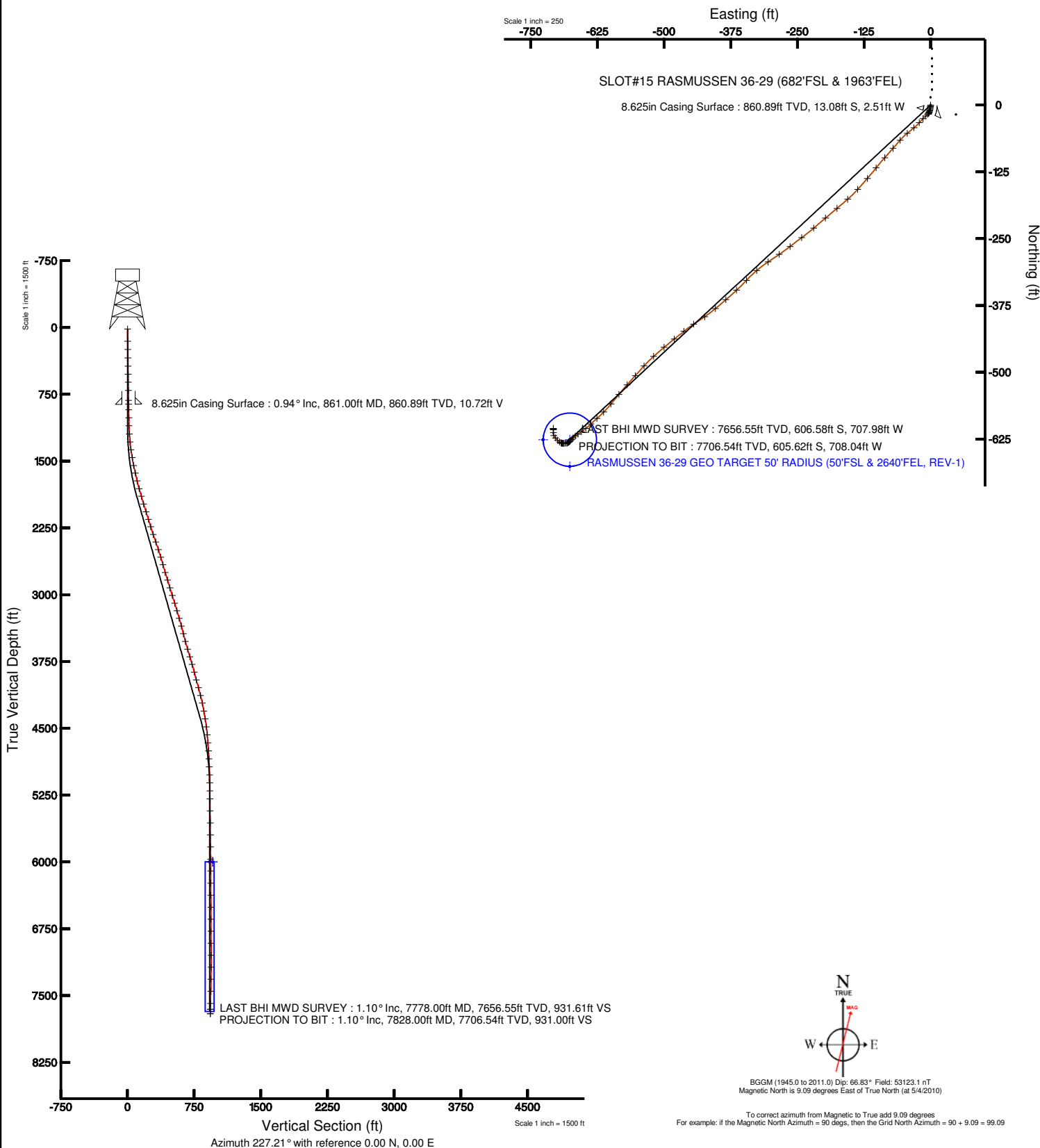


# KERR MCGEE OIL & GAS ONSHORE LP

Location: COLORADO Slot: SLOT#15 RASMUSSEN 36-29 (682'FSL & 1963'FEL)  
 Field: WELD COUNTY (KERR MCGEE) Well: RASMUSSEN 36-29  
 Facility: SEC.29-T2N-R68W Wellbore: RASMUSSEN 36-29 PWB



Plot reference wellpath is RASMUSSEN 36-29 (REV-A.0) PWP	
True vertical depths are referenced to XTREME 12 (RT)	Grid System: NAD83 / Lambert Colorado State Planes, Northern Zone (501), US feet
Measured depths are referenced to XTREME 12 (RT)	North Reference: True north
XTREME 12 (RT) to Mean Sea Level: 4950 feet	Scale: True distance
Mean Sea Level to Mud line (Facility: SEC.29-T2N-R68W): 0 feet	Depths are in feet
Coordinates are in feet referenced to Slot	Created by: bensjacj on 5/12/2010





# Actual Wellpath Report

RASMUSSEN 36-29 AWP

Page 1 of 5



INTEQ

## REFERENCE WELLPATH IDENTIFICATION

Operator	KERR MCGEE OIL & GAS ONSHORE LP	Slot	SLOT#15 RASMUSSEN 36-29 (682'FSL & 1963'FEL)
Area	COLORADO	Well	RASMUSSEN 36-29
Field	WELD COUNTY (KERR MCGEE)	Wellbore	RASMUSSEN 36-29 AWB
Facility	SEC.29-T2N-R68W		

## REPORT SETUP INFORMATION

Projection System	NAD83 / Lambert Colorado State Planes, Northern Zone (501), US feet	Software System	WellArchitect® 2.0
North Reference	True	User	Bensjacj
Scale	0.99996	Report Generated	5/12/2010 at 10:32:22 AM
Convergence at slot	0.31° East	Database/Source file	DENVER/RASMUSSEN_36-29_AWB.xml

## WELLPATH LOCATION

	Local coordinates		Grid coordinates		Geographic coordinates	
	North[ft]	East[ft]	Easting[USft]	Northing[USft]	Latitude	Longitude
Slot Location	-3897.90	1437.85	3132944.52	1281160.65	40°06'15.120"N	105°01'29.028"W
Facility Reference Pt			3131486.09	1285050.71	40°06'53.640"N	105°01'47.532"W
Field Reference Pt			3197771.84	1268891.29	40°04'09.600"N	104°47'36.000"W

## WELLPATH DATUM

Calculation method	Minimum curvature	XTREME 12 (RT) to Facility Vertical Datum	4950.00ft
Horizontal Reference Pt	Slot	XTREME 12 (RT) to Mean Sea Level	4950.00ft
Vertical Reference Pt	XTREME 12 (RT)	Facility Vertical Datum to Mud Line (Facility)	0.00ft
MD Reference Pt	XTREME 12 (RT)	Section Origin	N 0.00, E 0.00 ft
Field Vertical Reference	Mean Sea Level	Section Azimuth	227.21°



# Actual Wellpath Report

RASMUSSEN 36-29 AWP

Page 2 of 5



## REFERENCE WELLPATH IDENTIFICATION

Operator	KERR MCGEE OIL & GAS ONSHORE LP	Slot	SLOT#15 RASMUSSEN 36-29 (682'FSL & 1963'FEL)
Area	COLORADO	Well	RASMUSSEN 36-29
Field	WELD COUNTY (KERR MCGEE)	Wellbore	RASMUSSEN 36-29 AWP
Facility	SEC.29-T2N-R68W		

## WELLPATH DATA (80 stations) † = interpolated/extrapolated station

MD [ft]	Inclination [°]	Azimuth [°]	TVD [ft]	Vert Sect [ft]	North [ft]	East [ft]	DLS [°/100ft]	Comments
0.00†	0.000	180.700	0.00	0.00	0.00	0.00	0.00	
15.00	0.000	180.700	15.00	0.00	0.00	0.00	0.00	
152.00	1.000	180.700	151.99	0.82	-1.20	-0.01	0.73	
246.00	1.000	186.300	245.98	2.01	-2.83	-0.11	0.10	
340.00	1.000	191.200	339.96	3.29	-4.45	-0.36	0.09	
434.00	1.000	190.000	433.95	4.61	-6.06	-0.67	0.02	
524.00	1.000	191.200	523.94	5.87	-7.61	-0.95	0.02	
614.00	1.000	189.200	613.92	7.12	-9.15	-1.23	0.04	
704.00	1.000	195.100	703.91	8.41	-10.69	-1.56	0.11	
817.00	0.900	205.300	816.89	10.06	-12.44	-2.20	0.17	
923.00	1.000	208.100	922.88	11.71	-14.01	-2.99	0.10	
1013.00	1.200	223.600	1012.86	13.39	-15.38	-4.01	0.40	
1103.00	1.600	220.100	1102.84	15.58	-17.03	-5.47	0.45	
1194.00	4.200	226.400	1193.71	20.17	-20.30	-8.70	2.87	
1284.00	5.300	224.800	1283.40	27.62	-25.52	-14.02	1.23	
1372.00	7.900	222.500	1370.81	37.71	-32.86	-20.97	2.97	
1462.00	9.700	229.900	1459.75	51.45	-42.31	-30.95	2.36	
1552.00	11.600	231.300	1548.20	68.05	-52.85	-43.81	2.13	
1641.00	12.500	221.500	1635.24	86.56	-65.66	-57.18	2.51	
1730.00	13.800	220.800	1721.91	106.70	-80.91	-70.50	1.47	
1820.00	16.300	221.800	1808.81	129.94	-98.46	-85.93	2.79	
1910.00	15.900	218.700	1895.29	154.71	-117.49	-102.06	1.05	
2000.00	17.400	220.800	1981.51	180.27	-137.30	-118.56	1.80	
2091.00	17.600	222.500	2068.30	207.51	-157.75	-136.74	0.60	
2180.00	17.000	228.500	2153.28	233.93	-176.29	-155.58	2.11	
2268.00	17.800	230.300	2237.25	260.22	-193.40	-175.57	1.10	
2358.00	18.500	229.600	2322.77	288.22	-211.45	-197.02	0.81	
2448.00	19.300	229.600	2407.92	317.35	-230.34	-219.22	0.89	
2538.00	18.100	233.800	2493.17	346.10	-248.24	-241.83	2.00	
2628.00	17.300	232.000	2578.91	373.32	-264.73	-263.66	1.08	
2717.00	15.400	235.900	2664.31	398.20	-279.51	-283.88	2.46	
2807.00	17.400	235.900	2750.65	423.31	-293.75	-304.92	2.22	
2897.00	17.000	229.600	2836.63	449.76	-309.83	-326.08	2.12	
2988.00	17.100	223.600	2923.63	476.41	-328.14	-345.44	1.94	
3077.00	17.100	226.700	3008.70	502.55	-346.59	-363.99	1.02	
3168.00	17.400	229.900	3095.61	529.52	-364.53	-384.13	1.09	
3256.00	16.500	229.900	3179.79	555.15	-381.05	-403.76	1.02	
3345.00	16.700	235.500	3265.08	580.43	-396.44	-423.96	1.81	
3435.00	15.300	237.300	3351.60	604.92	-410.18	-444.61	1.65	
3525.00	14.000	229.600	3438.68	627.49	-423.65	-462.90	2.60	
3615.00	15.600	232.000	3525.69	650.43	-438.16	-480.73	1.90	
3705.00	16.400	230.600	3612.20	675.17	-453.67	-500.08	0.99	
3795.00	17.000	227.800	3698.41	701.01	-470.58	-519.65	1.12	
3883.00	16.700	222.200	3782.63	726.47	-488.59	-537.67	1.88	
3974.00	14.500	221.800	3870.28	750.84	-506.77	-554.05	2.42	



# Actual Wellpath Report

RASMUSSEN 36-29 AWP

Page 3 of 5



## REFERENCE WELLPATH IDENTIFICATION

Operator	KERR MCGEE OIL & GAS ONSHORE LP	Slot	SLOT#15 RASMUSSEN 36-29 (682'FSL & 1963'FEL)
Area	COLORADO	Well	RASMUSSEN 36-29
Field	WELD COUNTY (KERR MCGEE)	Wellbore	RASMUSSEN 36-29 AWB
Facility	SEC.29-T2N-R68W		

## WELLPATH DATA (80 stations)

MD [ft]	Inclination [°]	Azimuth [°]	TVD [ft]	Vert Sect [ft]	North [ft]	East [ft]	DLS [°/100ft]	Comments
4064.00	15.000	222.500	3957.31	773.67	-523.75	-569.43	0.59	
4154.00	15.400	219.000	4044.16	797.10	-541.63	-584.82	1.11	
4244.00	14.700	219.700	4131.08	820.25	-559.70	-599.63	0.80	
4333.00	12.000	225.300	4217.67	840.70	-574.90	-613.42	3.36	
4423.00	10.100	228.100	4305.99	857.94	-586.75	-625.95	2.19	
4513.00	9.500	227.000	4394.68	873.26	-597.09	-637.25	0.70	
4603.00	7.100	232.700	4483.73	886.22	-605.52	-647.11	2.82	
4693.00	5.900	232.700	4573.15	896.36	-611.70	-655.22	1.33	
4784.00	4.100	234.500	4663.80	904.25	-616.42	-661.59	1.99	
4874.00	3.800	238.700	4753.59	910.36	-619.84	-666.75	0.46	
4964.00	2.600	218.600	4843.45	915.30	-622.99	-670.58	1.81	
5054.00	2.800	226.700	4933.35	919.52	-626.09	-673.45	0.48	
5144.00	1.300	215.800	5023.29	922.72	-628.42	-675.65	1.71	
5234.00	1.000	231.700	5113.27	924.50	-629.74	-676.86	0.48	
5324.00	0.800	243.300	5203.26	925.89	-630.51	-678.04	0.30	
5414.00	0.700	221.100	5293.25	927.04	-631.20	-678.96	0.34	
5549.00	0.800	241.500	5428.24	928.77	-632.28	-680.33	0.21	
5684.00	0.700	252.000	5563.23	930.43	-632.98	-681.94	0.13	
5819.00	0.800	277.400	5698.22	931.79	-633.11	-683.66	0.25	
5954.00	1.000	266.100	5833.20	933.31	-633.07	-685.77	0.20	
6090.00	0.800	258.000	5969.19	935.05	-633.35	-687.89	0.17	
6224.00	0.400	263.600	6103.18	936.23	-633.60	-689.27	0.30	
6360.00	0.400	314.300	6239.18	936.63	-633.32	-690.08	0.25	
6495.00	0.300	244.700	6374.17	936.99	-633.14	-690.73	0.30	
6630.00	0.800	267.200	6509.17	938.05	-633.34	-691.99	0.40	
6765.00	0.200	352.000	6644.16	938.64	-633.15	-692.97	0.60	
6900.00	0.600	320.600	6779.16	938.47	-632.37	-693.45	0.33	
7035.00	2.000	294.200	6914.12	939.34	-630.86	-696.05	1.10	
7170.00	2.400	318.800	7049.03	940.19	-627.77	-700.06	0.75	
7306.00	2.500	323.800	7184.90	939.77	-623.23	-703.69	0.17	
7441.00	2.200	323.100	7319.79	939.16	-618.78	-706.98	0.22	
7576.00	2.800	9.100	7454.67	936.30	-613.45	-708.01	1.50	
7712.00	1.700	351.200	7590.57	932.56	-608.18	-707.80	0.95	
7778.00	1.100	356.800	7656.55	931.61	-606.58	-707.98	0.93	LAST BHI MWD SURVEY
7828.00	1.100	356.800	7706.54	931.00	-605.62	-708.04	0.00	PROJECTION TO BIT



# Actual Wellpath Report

RASMUSSEN 36-29 AWP

Page 4 of 5



INTEQ

REFERENCE WELLPATH IDENTIFICATION			
Operator	KERR MCGEE OIL & GAS ONSHORE LP	Slot	SLOT#15 RASMUSSEN 36-29 (682'FSL & 1963'FEL)
Area	COLORADO	Well	RASMUSSEN 36-29
Field	WELD COUNTY (KERR MCGEE)	Wellbore	RASMUSSEN 36-29 AWB
Facility	SEC.29-T2N-R68W		

HOLE & CASING SECTIONS Ref Wellbore: RASMUSSEN 36-29 AWB Ref Wellpath: RASMUSSEN 36-29 AWP									
String/Diameter	Start MD [ft]	End MD [ft]	Interval [ft]	Start TVD [ft]	End TVD [ft]	Start N/S [ft]	Start E/W [ft]	End N/S [ft]	End E/W [ft]
12.25in Open Hole	15.00	872.00	857.00	15.00	871.89	0.00	0.00	-13.24	-2.59
8.625in Casing Surface	15.00	861.00	846.00	15.00	860.89	0.00	0.00	-13.08	-2.51
7.875in Open Hole	861.00	7828.00	6967.00	860.89	7706.54	-13.08	-2.51	-605.62	-708.04

TARGETS									
Name	MD [ft]	TVD [ft]	North [ft]	East [ft]	Grid East [srv ft]	Grid North [srv ft]	Latitude	Longitude	Shape
RASMUSSEN 36-29 GEO TARGET 50' RADIUS (50'FSL & 2640'FEL, REV-1)		6000.00	-626.58	-676.98	3132270.93	1280530.48	40°06'08.928"N	105°01'37.740"W	circle
RASMUSSEN 36-29 HARDLINE 50'S OF GEO TARGET		6000.00	-676.69	-676.98	3132271.20	1280480.37	40°06'08.433"N	105°01'37.740"W	point
RASMUSSEN 36-29 HARDLINE 50'W OF GEO TARGET		6000.00	-626.58	-726.98	3132220.94	1280530.21	40°06'08.928"N	105°01'38.383"W	point

WELLPATH COMPOSITION Ref Wellbore: RASMUSSEN 36-29 AWB Ref Wellpath: RASMUSSEN 36-29 AWP				
Start MD [ft]	End MD [ft]	Positional Uncertainty Model	Log Name/Comment	Wellbore
15.00	817.00	NaviTrak (Standard)	BHI MWD 12.25" HOLE <152-817>	RASMUSSEN 36-29 AWB
817.00	7778.00	NaviTrak (Standard)	BHI MWD 7.875" HOLE <923-7778>	RASMUSSEN 36-29 AWB
7778.00	7828.00	Blind Drilling (std)	Projection to bit	RASMUSSEN 36-29 AWB



# Actual Wellpath Report

RASMUSSEN 36-29 AWP

Page 5 of 5



INTEQ

## REFERENCE WELLPATH IDENTIFICATION

Operator	KERR MCGEE OIL & GAS ONSHORE LP	Slot	SLOT#15 RASMUSSEN 36-29 (682'FSL & 1963'FEL)
Area	COLORADO	Well	RASMUSSEN 36-29
Field	WELD COUNTY (KERR MCGEE)	Wellbore	RASMUSSEN 36-29 AWB
Facility	SEC.29-T2N-R68W		

## WELLPATH COMMENTS

MD [ft]	Inclination [°]	Azimuth [°]	TVD [ft]	Comment
7778.00	1.100	356.800	7656.55	LAST BHI MWD SURVEY
7828.00	1.100	356.800	7706.54	PROJECTION TO BIT