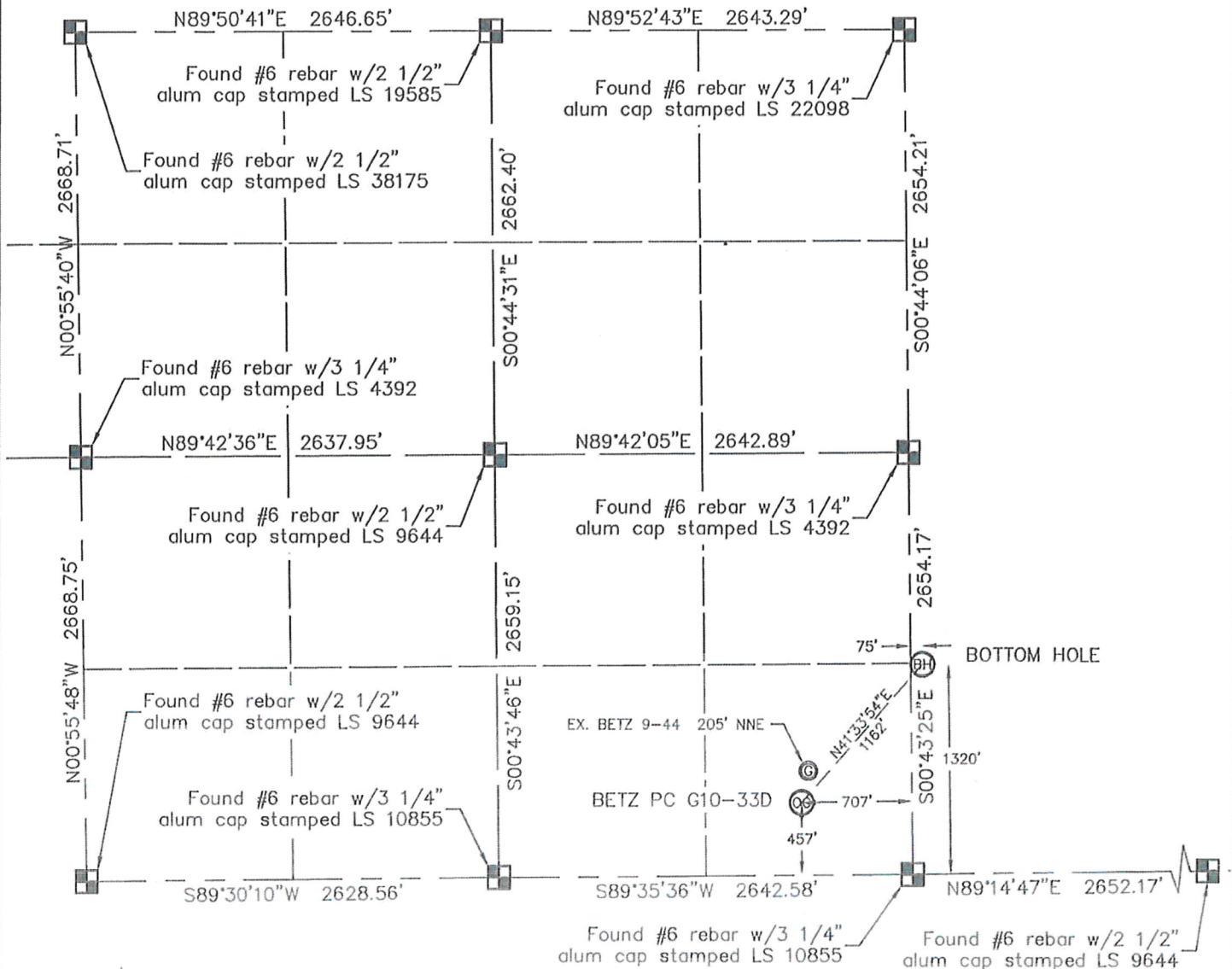


WELL LOCATION CERTIFICATE

THIS MAP DOES NOT REPRESENT A BOUNDARY SURVEY

SECTION: 9
TOWNSHIP: 4N
RANGE: 65WIn accordance with a request from BEAU FRITZ with Noble Energy Inc.King Surveyors Inc. has determined the surface location of the BETZ PC G10-33D to be 457' from the South line and 707' from the East line, as measured at right angles, from the section lines of Section 9, Township 4 North, Range 65 West and the bottom hole to be 1320' from the South line and 75' from the West line, as measured at right angles, from the section lines of Section 10, Township 4 North, Range 65 West of the Sixth Principal Meridian, County of Weld, State of Colorado.I hereby state that this Well Location Certificate was prepared by me, or under my direct supervision, that the fieldwork was completed on 6-15-2010, for and on behalf of Noble Energy Inc. That this is not a Land Survey Plat or an Improvement Survey Plat, and that it is not to be relied upon for establishment of fence, building, or other future improvement lines.

SURFACE LOCATION

LATITUDE: 40.32097N
LONGITUDE: 104.66114W
PDOP: 1.0
ELEV: 4717'
1/4, 1/4: SE1/4 SE1/4
NEAREST PROPERTY LINE: 457' SOUTH

BOTTOM HOLE

LATITUDE: 40.32333N
LONGITUDE: 104.65834W

NOTE:

- 1) Bearings shown are Grid Bearings of the Colorado State Plane Coordinate System, North Zone, North American Datum 1983/2007. The lineal dimensions as contained herein are based upon the "U.S. Survey Foot."
- 2) Ground elevations are based on an observed GPS elevation (NAVD 1988 DATUM).
- 3) NEAREST EXISTING WELL: BETZ 9-44 205' NORTH-NORTHEAST
- 4) IMPROVEMENTS: See VISIBLE IMPROVEMENTS exhibit for all visible improvements within 400' of well head.
- 5) SURFACE USE: PASTURE

NOTE

According to Colorado law, you must commence any legal action based upon any defect in this W.L.C. within three years after you discover such defect. In no event, may any action based upon any defect in this survey be commenced more than ten years after the date of the certificate shown hereon. (13-80-105 C.R.S.)

LEGEND

- = ALIQUOT MONUMENT AS DESCRIBED
- = CALCULATED POSITION

6/22/2010

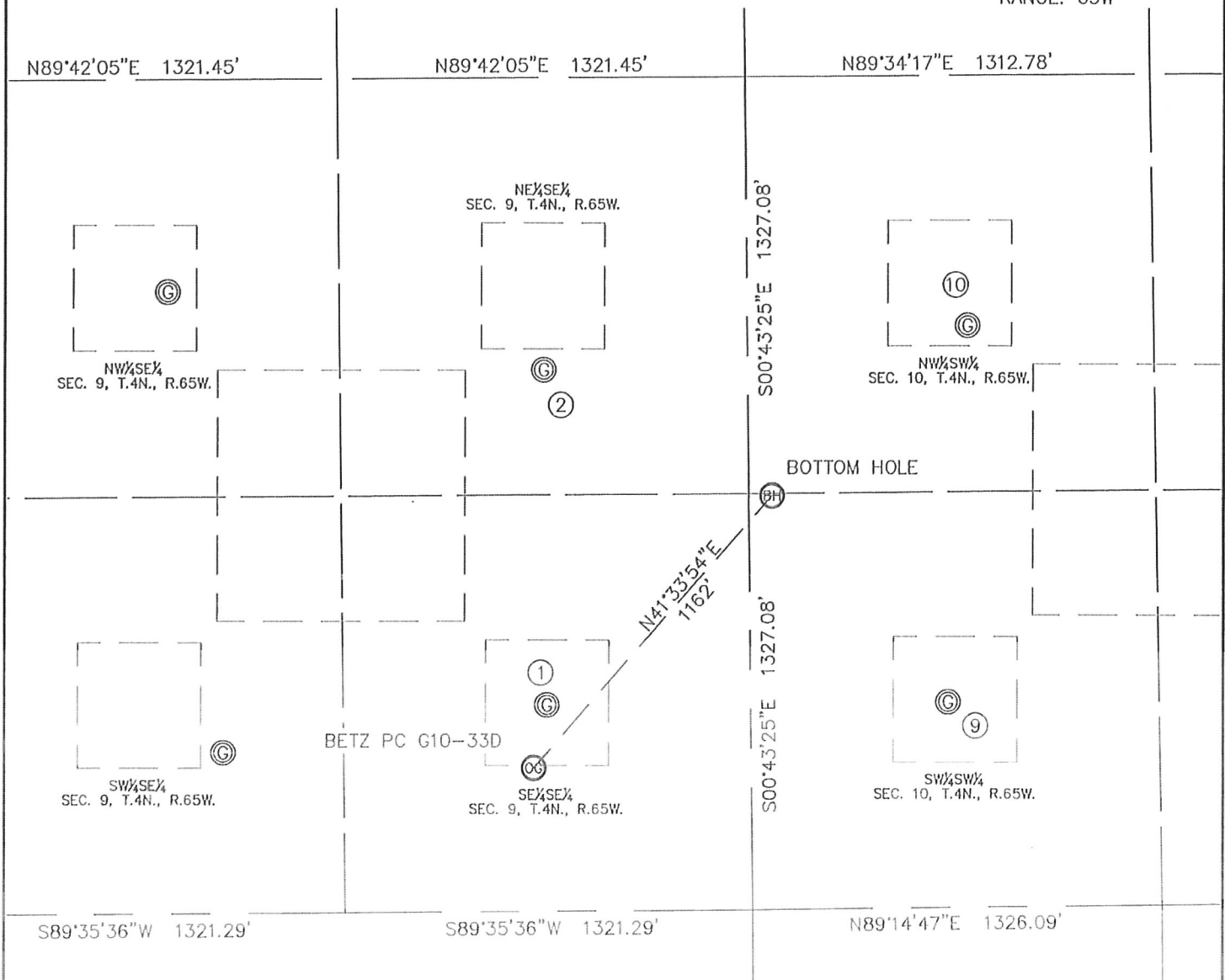
Michael Chad Dillka On Behalf of King Surveyors, Inc.

Colorado Licensed Professional Land Surveyor #38106

PROJECT#: 2010229

SITE SKETCH

SECTION: 9
TOWNSHIP: 4N
RANGE: 65W



①

BETZ 9-44
SE1/4 SE1/4 SEC 9
656' FSL
662' FEL
LAT-40.32152°N
LONG-104.66098°W
PDOP: 1.0
ELEV: 4716'

②

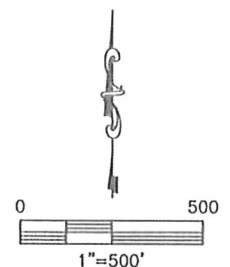
BETZ 1
NE1/4 SE1/4 SEC 9
1726' FSL
662' FEL
LAT-40.32445°N
LONG-104.66099°W
PDOP: 1.1
ELEV: 4706'

⑨

LEE #1-10
SW1/4 SW1/4 SEC 10
654' FSL
638' FWL
LAT-40.32151°N
LONG-104.65632°W
PDOP: 1.4
ELEV: 4709'

⑩

LEE G10-12X
NW1/4 SW1/4 SEC 10
1853' FSL
713' FWL
LAT-40.32480°N
LONG-104.65606°W
PDOP: 1.3
ELEV: 4703'



PROJECT#: 2010229