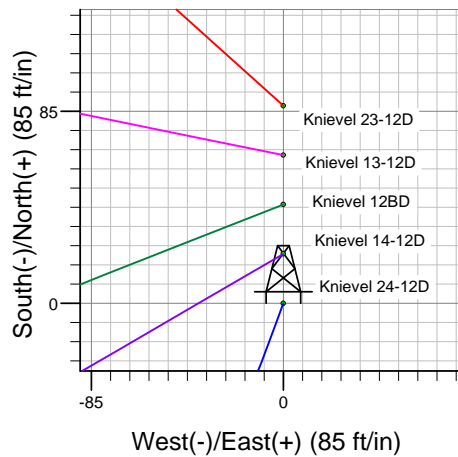
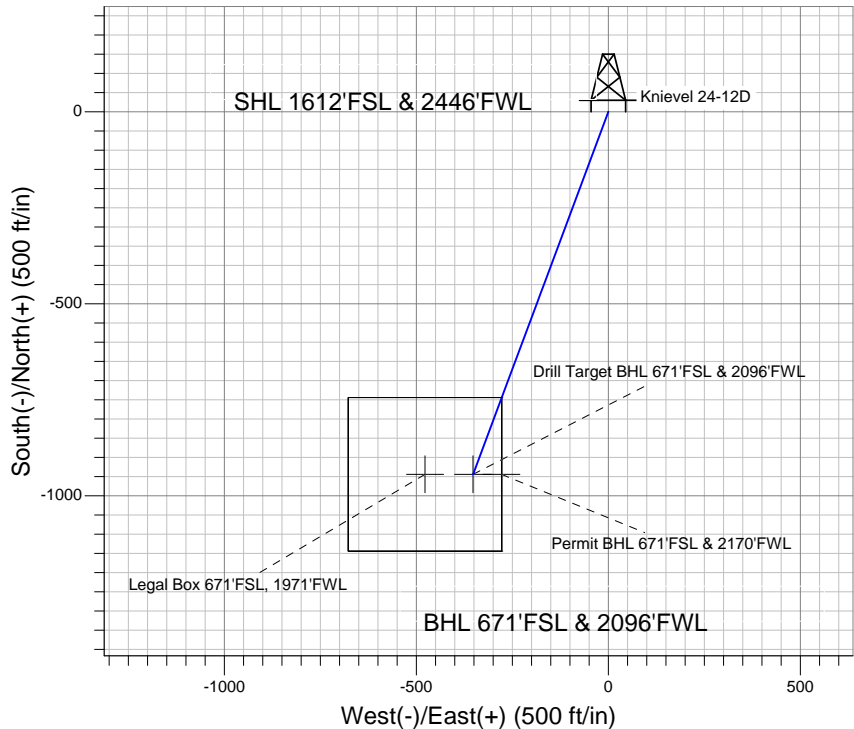
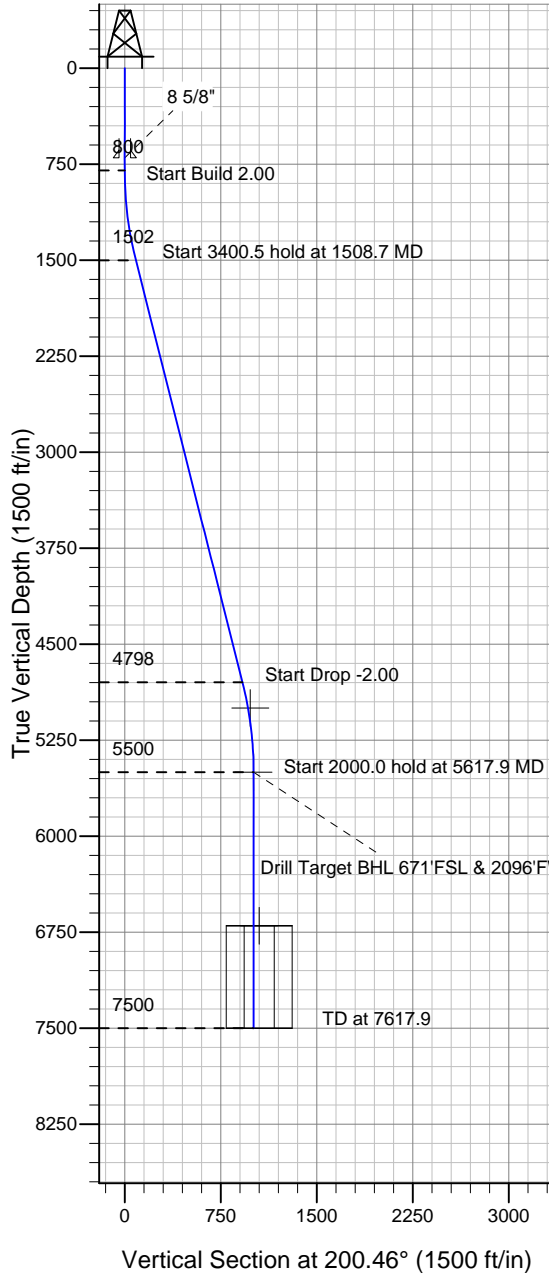


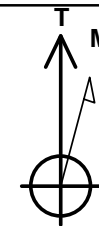
Well Name: Knievel 24-12D

Surface Location: Knievel 23-12D Pad Sec.12-T6N-R67W
 North American Datum 1983, US State Plane 1983Colorado Northern Zone
 Ground Elevation: 4868.0
 +N/-S +E/-W Northing Easting Latitude Longitude Slot
 0.0 0.0 1425213.13 3182868.83 40° 29' 55.500 N 104° 50' 32.784 W
 Original Well EleWELL @ 4881.0ft (Original Well Elev)

PETROLEUM DEVELOPMENT CORP Weld County CO



Knievel 23-12D Pad Sec.12-T6N-R67W
 Knievel 24-12D
 Plan #2 (10-04-10)
 9:50, October 08 2010



Azimuths to True North
 Magnetic North: 9.01°
 Magnetic Field
 Strength: 53247.8snT
 Dip Angle: 67.14°
 Date: 10/4/2010
 Model: IGRF2010

WELLBORE TARGET DETAILS (LAT/LONG)

Name	TVD	+N/-S	+E/-W	Latitude	Longitude	Shape
Permit BHL 671'FSL & 2170'FWL	5000.0	-943.6	-278.1	40° 29' 46.176 N	104° 50' 36.384 W	Point
Drill Target BHL 671'FSL & 2096'FWL	5500.0	-943.6	-352.1	40° 29' 46.176 N	104° 50' 37.342 W	Point
Legal Box 671'FSL, 1971'FWL	6700.0	-943.6	-477.1	40° 29' 46.176 N	104° 50' 38.960 W	Rectangle (Sides: L400.0 W400.0)

SECTION DETAILS

Sec	MD	Inc	Azi	TVD	+N/-S	+E/-W	DLeg	TFace	VSec	Target
1	0.0	0.00	0.00	0.0	0.0	0.0	0.00	0.00	0.0	
2	800.0	0.00	0.00	800.0	0.0	0.0	0.00	0.00	0.0	
3	1508.7	14.17	200.46	1501.5	-81.7	-30.5	2.00	200.46	87.2	
4	4909.2	14.17	200.46	4798.5	-861.9	-321.6	0.00	0.00	919.9	
5	5617.9	0.00	0.00	5500.0	-943.6	-352.1	2.00	180.00	1007.2	Drill Target BHL 671'FSL & 2096'FWL
6	7617.9	0.00	0.00	7500.0	-943.6	-352.1	0.00	0.00	1007.2	