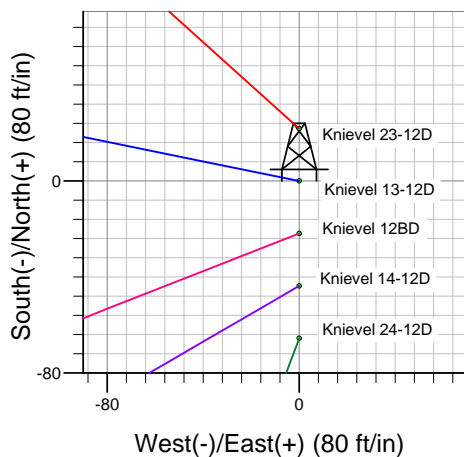
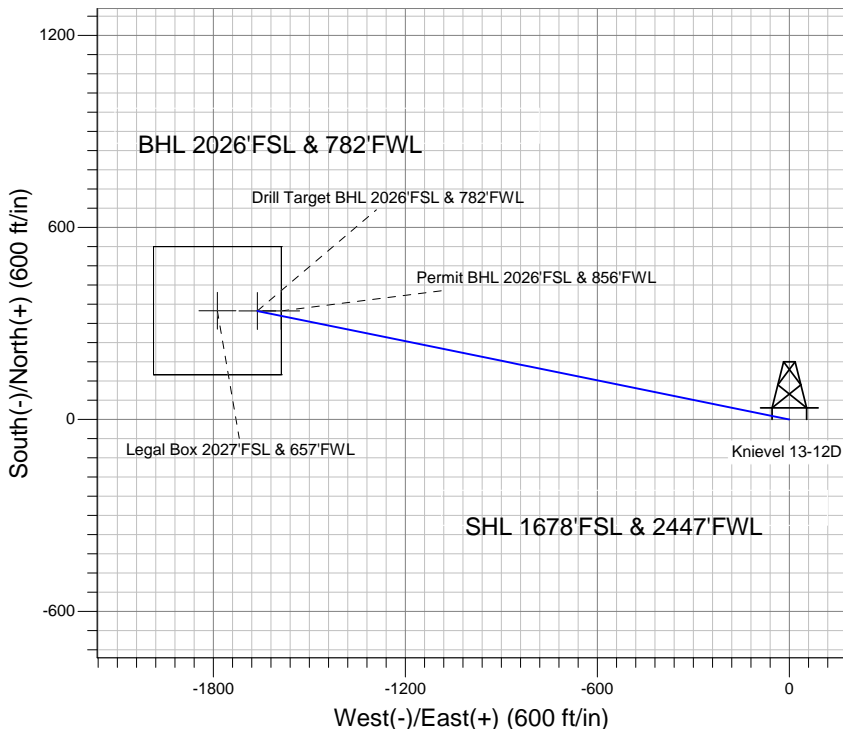
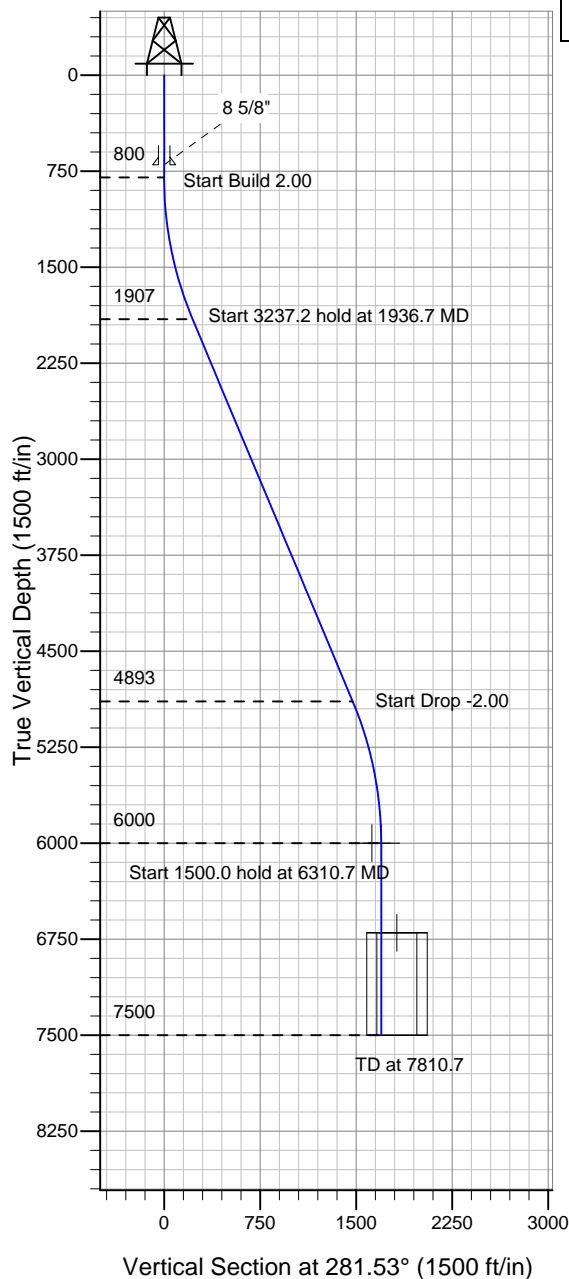


Well Name: Knievel 13-12D

Surface Location: Knievel 23-12D Pad Sec.12-T6N-R67W
 North American Datum 1983 , US State Plane 1983Colorado Northern Zone
 Ground Elevation: 4866.0
 +N/-S +E/-W Northing Easting Latitude Longitude Slot
 0.0 0.0 1425278.69 3182868.34 40° 29' 56.148 N 104° 50' 32.784 W
 Original Well EleWELL @ 4879.0ft (Original Well Elev)

PETROLEUM DEVELOPMENT CORP Weld County CO



Knievel 23-12D Pad Sec.12-T6N-R67W
 Knievel 13-12D
 Plan #2 (10-04-10)
 8:50, October 08 2010



Azimuths to True North
 Magnetic North: 9.01°
 Magnetic Field
 Strength: 53247.9snT
 Dip Angle: 67.14°
 Date: 10/4/2010
 Model: IGRF2010

WELLBORE TARGET DETAILS (LAT/LONG)

Name	TVD	+N/-S	+E/-W	Latitude	Longitude	Shape
Drill Target BHL 2026'FSL & 782'FWL	6000.0	338.9	-1662.0	40° 29' 59.496 N	104° 50' 54.298 W	Point
Permit BHL 2026'FSL & 856'FWL	6000.0	338.9	-1588.0	40° 29' 59.496 N	104° 50' 53.340 W	Point
Legal Box 2027'FSL & 657'FWL	6700.0	339.9	-1787.0	40° 29' 59.506 N	104° 50' 55.916 W	Rectangle (Sides: L400.0 W400.0)

SECTION DETAILS

Sec	MD	Inc	Azi	TVD	+N/-S	+E/-W	DLeg	TFace	VSec	Target
1	0.0	0.00	0.00	0.0	0.0	0.0	0.00	0.00	0.0	
2	800.0	0.00	0.00	800.0	0.0	0.0	0.00	0.00	0.0	
3	1936.7	22.73	281.53	1907.1	44.5	-218.1	2.00	281.53	222.6	
4	5174.0	22.73	281.53	4892.9	294.4	-1443.9	0.00	0.00	1473.7	
5	6310.7	0.00	0.00	6000.0	338.9	-1662.0	2.00	180.00	1696.2	Drill Target BHL 2026'FSL & 782'FWL
6	7810.7	0.00	0.00	7500.0	338.9	-1662.0	0.00	0.00	1696.2	