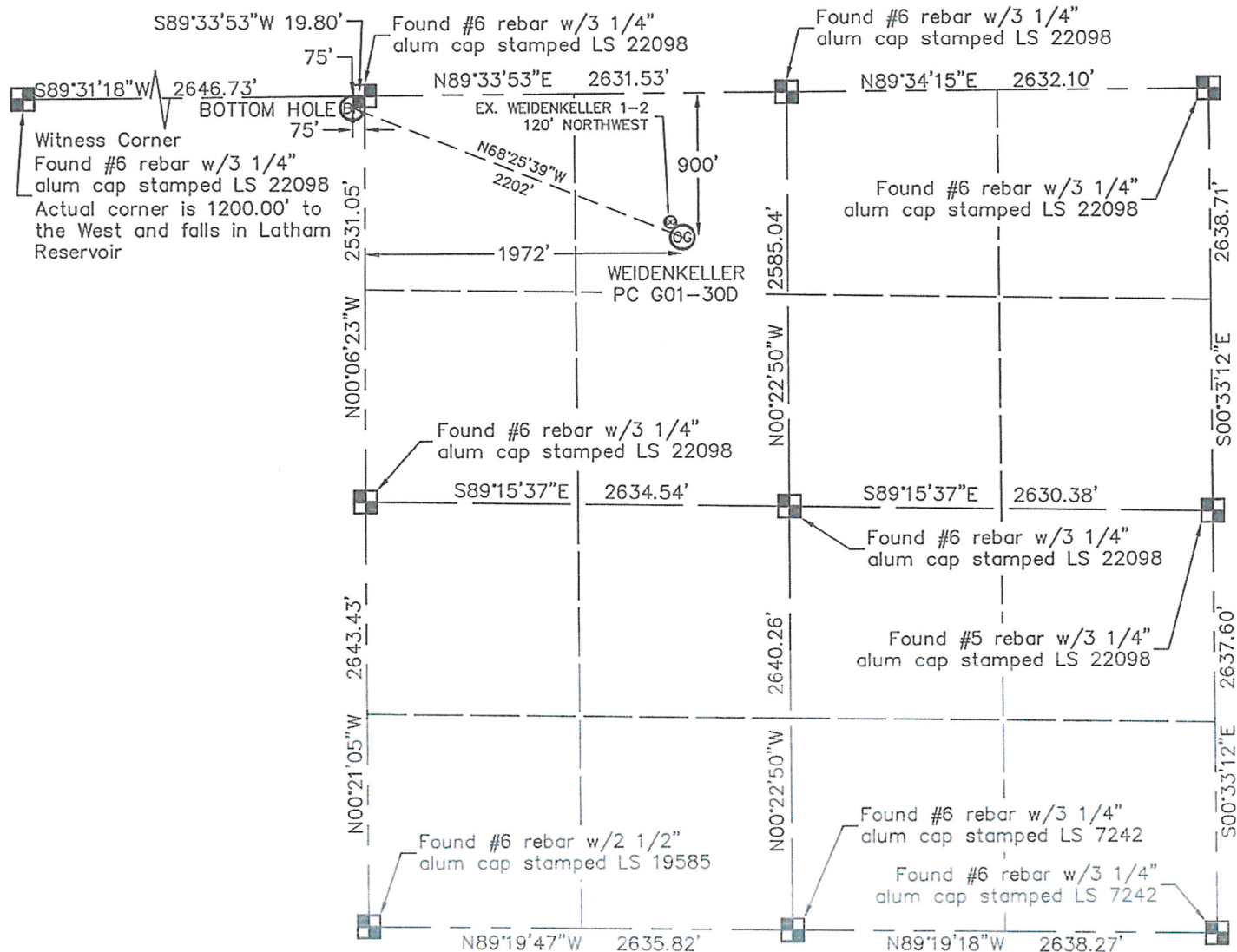


WELL LOCATION CERTIFICATE

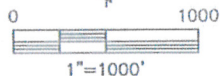
THIS MAP DOES NOT REPRESENT A BOUNDARY SURVEY

SECTION: 1
TOWNSHIP: 4N
RANGE: 65W

In accordance with a request from RYAN ANTONIO with Noble Energy Inc.

King Surveyors Inc. has determined the surface location of the WEIDENKELLER PC G01-300 to be 900' from the North line and 1972' from the West line, as measured at right angles, from the section lines of Section 1, Township 4 North, Range 65 West and the bottom hole to be 75' from the North line and 75' from the East line, as measured at right angles, from the section lines of Section 2, Township 4 North, Range 65 West of the Sixth Principal Meridian, County of Weld, State of Colorado.

I hereby state that this Well Location Certificate was prepared by me, or under my direct supervision, that the fieldwork was completed on 6-4-2010, for and on behalf of Noble Energy Inc. That this is not a Land Survey Plat or an Improvement Survey Plat, and that it is not to be relied upon for establishment of fence, building, or other future improvement lines.



NOTE:

- 1) Bearings shown are Grid Bearings of the Colorado State Plane Coordinate System, North Zone, North American Datum 1983/2007. The lineal dimensions as contained herein are based upon the "U.S. Survey Foot."
- 2) Ground elevations are based on an observed GPS elevation (NAVD 1988 DATUM).
- 3) NEAREST EXISTING WELL: WEIDENKELLER 1-2 120' NORTHWEST
- 4) IMPROVEMENTS: See VISIBLE IMPROVEMENTS exhibit for all visible improvements within 400' of well head.
- 5) SURFACE USE: CROP FIELD & EXISTING WELL SITE

SURFACE LOCATION
LATITUDE: 40.34597°N
LONGITUDE: 104.61380°W
PDOP: 2.6
ELEV: 4752'
1/4, 1/4: NE1/4NW1/4
NEAREST PROPERTY LINE: 144' SOUTHWEST

BOTTOM HOLE
LATITUDE: 40.34824°N
LONGITUDE: 104.62111°W

NOTE

According to Colorado law, you must commence any legal action based upon any defect in this W.L.C. within three years after you discover such defect. In no event, may any action based upon any defect in this survey be commenced more than ten years after the date of the certificate shown hereon. (13-80-105 C.R.S.)

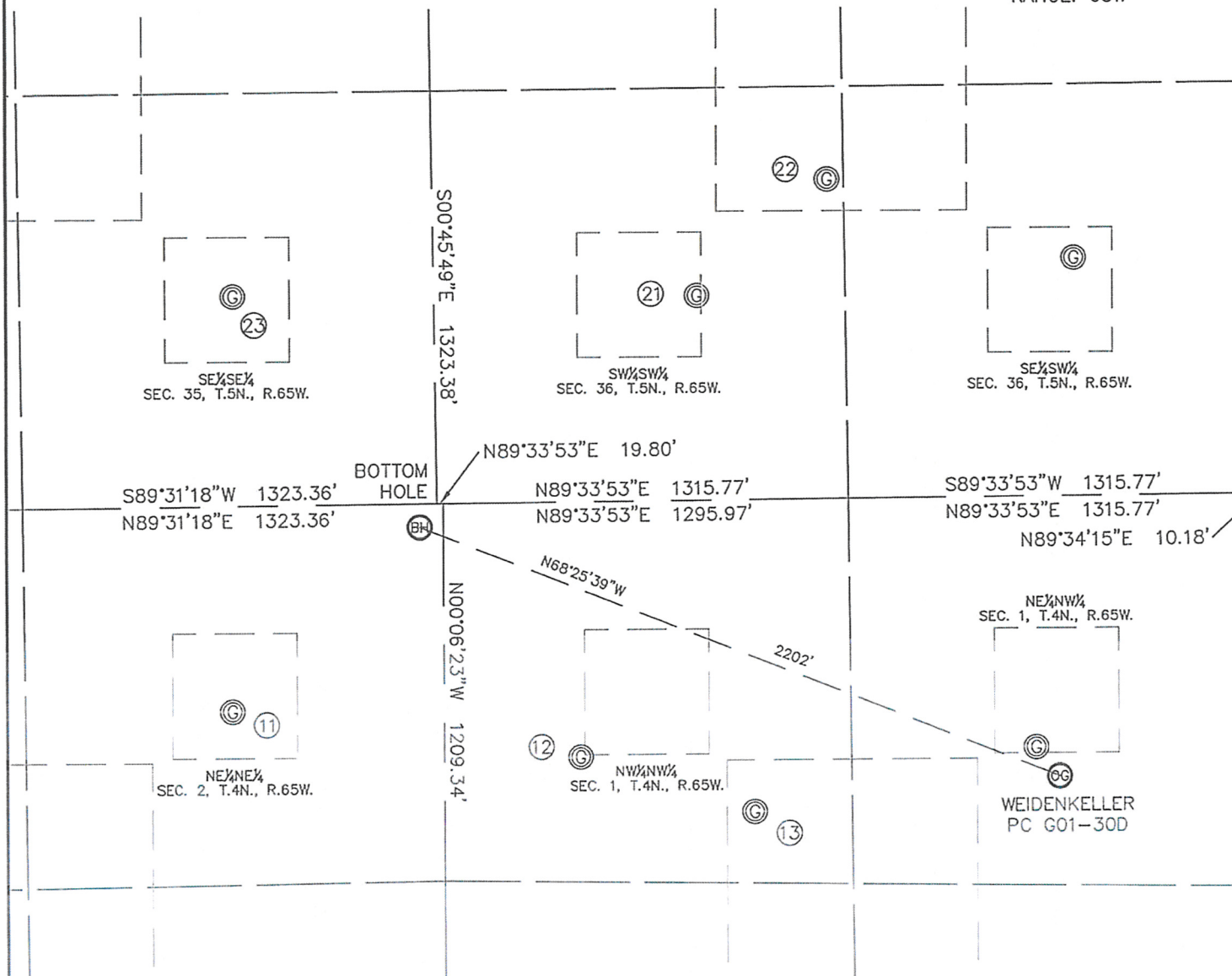
LEGEND

- = ALIQUOT MONUMENT AS DESCRIBED
- = CALCULATED POSITION

Michael Chad Dika 38100 Behalf of King Surveyors, Inc.
Colorado Licensed Professional Land Surveyor #38106
PROJECT#: 2010202
6-11-2010

SITE SKETCH

SECTION: 1
TOWNSHIP: 4N
RANGE: 65W



- | | | |
|---|--|---|
| <p>(11)</p> <p>LOWER LATHAM RESERVOIR CO 2-1G
NE1/4 NE1/4
658' FNL
678' FEL
LAT-40.34665°N
LONG-104.62329°W
PDOP: 3.1
ELEV: 4701'</p> | <p>(12)</p> <p>WEIDENKELLER 1-22
NW1/4 NW1/4
818' FNL
436' FWL
LAT-40.34620°N
LONG-104.61930°W
PDOP: 1.8
ELEV: 4725'</p> | <p>(13)</p> <p>WEIDENKELLER 1-25
NW1/4 NW1/4
1001' FNL
995' FWL
LAT-40.34570°N
LONG-104.61730°W
PDOP: 1.7
ELEV: 4733'</p> |
| <p>(21)</p> <p>STATE SCHMIDT 36-12
SW1/4 SW1/4
656' FSL
842' FWL
LAT-40.35024°N
LONG-104.61790°W
PDOP: 2.4
ELEV: 4751'</p> | <p>(22)</p> <p>STATE SCHMIDT 36-35
SW1/4 SW1/4
1024' FSL
1264' FWL
LAT-40.35125°N
LONG-104.61639°W
PDOP: 1.0
ELEV: 4760'</p> | <p>(23)</p> <p>FERGUSON 1-35
SE1/4 SE1/4
670' FSL
644' FEL
LAT-40.35029°N
LONG-104.62323°W
PDOP: 1.6
ELEV: 4798'</p> |

