

Steil Surveying Services, LLC

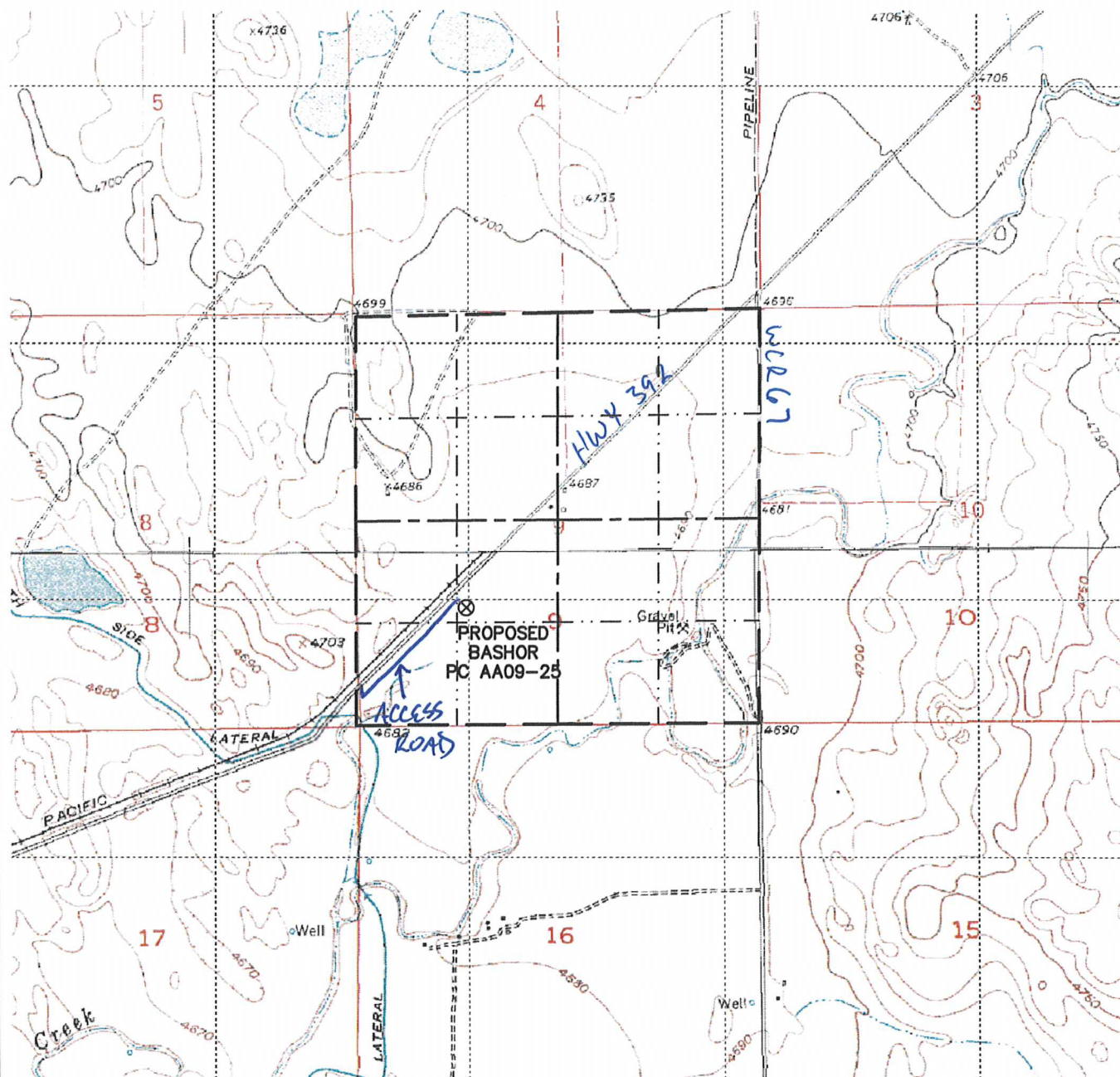
1102 West 19th Street P.O. BOX 2073

Cheyenne, Wyoming 82009

ACCESS ROAD MAP

BASHOR PC AA 09-25

SECTION 9  
TOWNSHIP 6 NORTH  
RANGE 63 WEST



0 2000

Scale: 1" = 2000'