

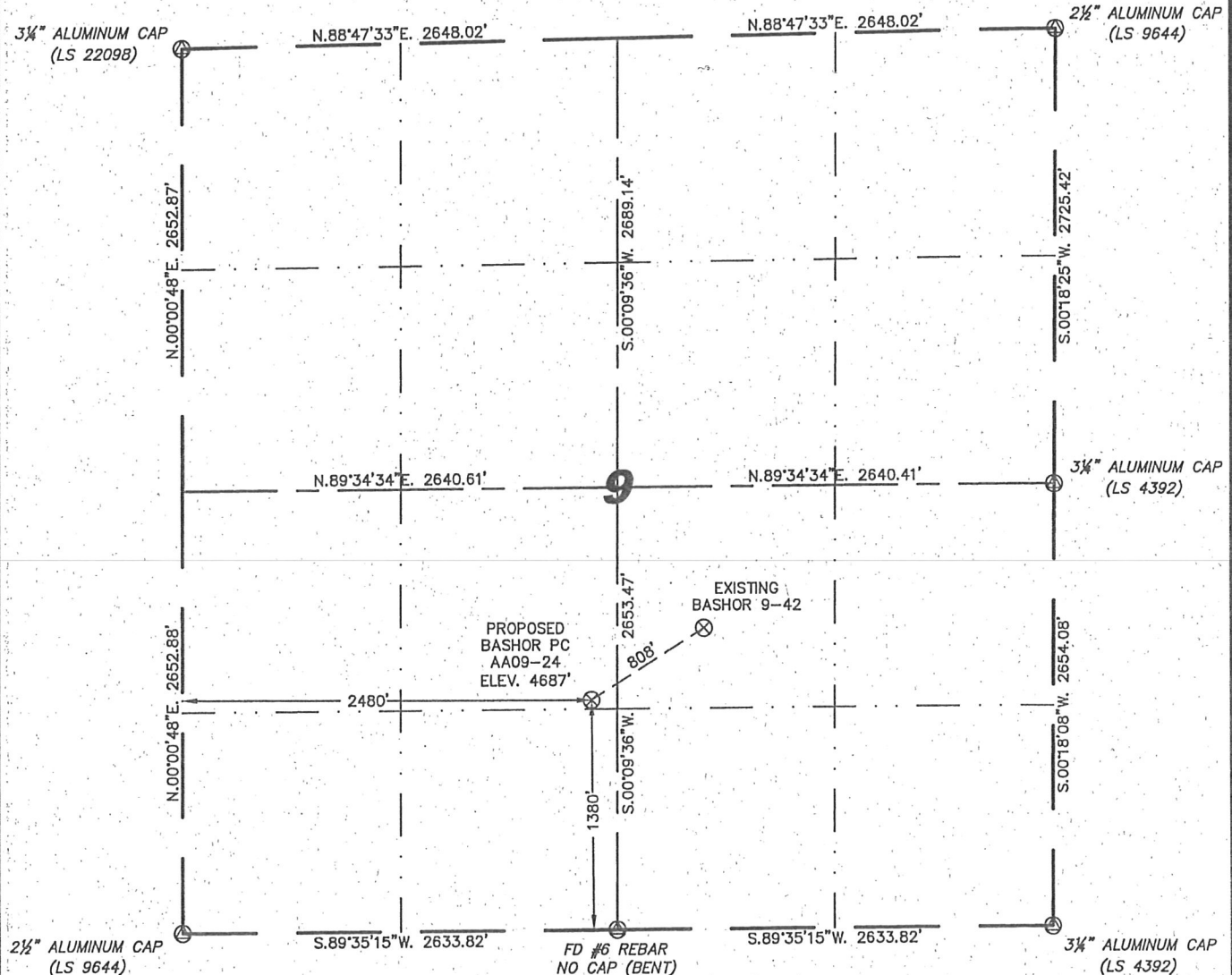
Steil Surveying Services, LLC

1102 West 19th Street P.O. BOX 2073

Cheyenne, Wyoming 82009

WELL LOCATION CERTIFICATE
THIS MAP DOES NOT REPRESENT A BOUNDARY SURVEY

SECTION 9
TOWNSHIP 6 NORTH
RANGE 63 WEST



0 1000

Scale: 1" = 1000'

IN ACCORDANCE WITH A REQUEST FROM ERIK VAN DECAR - NOBLE ENERGY INC, STEIL SURVEYING SERVICES, LLC HAS DETERMINED THE LOCATION OF THE BASHOR PC AA09-24 WELL TO BE 1380' FSL, 2480' FWL, AS MEASURED AT NINETY (90) DEGREES FROM THE SECTION LINES, SECTION 9, TOWNSHIP 6 NORTH, RANGE 63 WEST, 6TH PRINCIPLE MERIDIAN, WELD COUNTY, COLORADO.

I HEREBY CERTIFY THAT THIS WELL LOCATION CERTIFICATE WAS PREPARED BY ME, OR UNDER MY DIRECT SUPERVISION, THAT THE FIELD WORK WAS COMPLETED ON 06/17/2010, FOR AND ON BEHALF OF NOBLE ENERGY INC, THAT IT IS NOT A LAND SURVEY PLAT OR AN IMPROVEMENT SURVEY PLAT, AND THAT IT IS NOT TO BE RELIED UPON FOR ESTABLISHMENT OF FENCE, BUILDING, OR OTHER FUTURE IMPROVEMENT LINES.

NOTES:

- 1) BASIS OF BEARINGS FOR THIS MAP ARE BASED UPON GPS OBSERVATIONS MADE ON 06/14/2010 BETWEEN MONUMENTS LOCATED AT THE SOUTHEAST SECTION CORNER AND THE NORTHEAST SECTION CORNER OF SAID SECTION AND WITH ALL BEARINGS SHOWN HEREON RELATIVE THERETO.
- 2) ELEVATIONS ARE BASED UPON NGS OPUS SOLUTION NAVD 88 DATUM.
- 3) THE NEAREST EXISTING WELL IS: BASHOR 9-42, 808' NORTHEAST.
- 4) SEE VISIBLE IMPROVEMENTS EXHIBIT FOR ALL IMPROVEMENTS WITHIN 600'.
- 5) THE LOCATION FALLS IN CROP LAND.

LATITUDE & LONGITUDE (NAD 83 SURFACE HOLE):

LATITUDE: N 40.49771'

LONGITUDE: W 104.44248'

PDOP: 4.4

QUARTER-QUARTER: NE/4SW/4

NEAREST PROPERTY LINE: 157' TO THE EAST

LEGEND

(A) FOUND SURVEY MONUMENT PER MONUMENT RECORD - EXCEPTIONS NOTED.

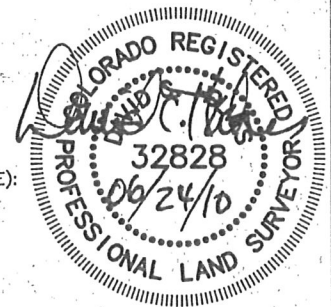
(C) CALCULATED DIMENSION

NOTICE: According to Colorado law you MUST commence any legal action based upon any defect in this W.L.C. within three years after you first discover such defect. In no event may any action based upon any defect in this W.L.C. be commenced more than ten years from this sold date of the certification shown hereon.

David C. Holmes
Professional Land Surveyor Registration No. 32828
State of Colorado

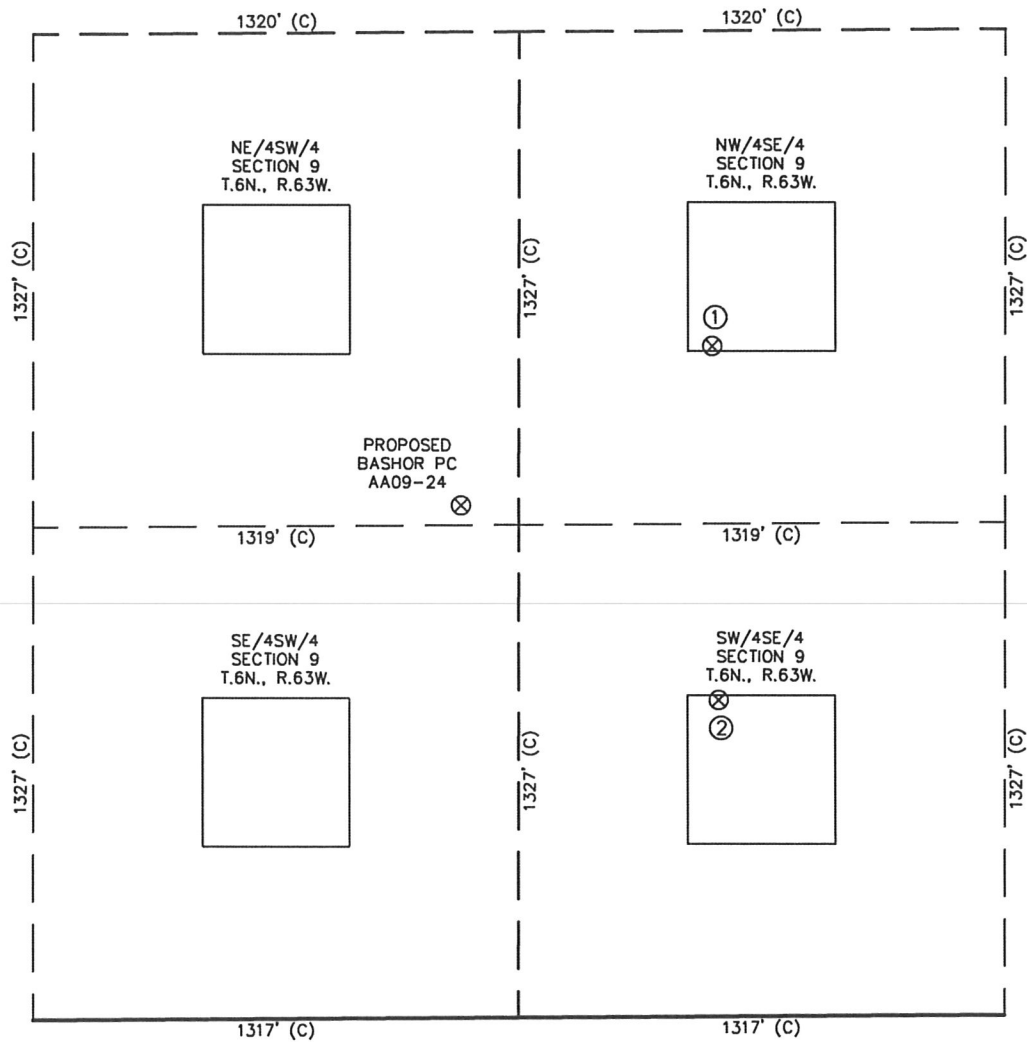
JOB #: 10086

Completed 06/24/2010



SKETCH — BASHOR PC AA09-24

SECTION 9
TOWNSHIP 6 NORTH
RANGE 63 WEST



①

BASHOR 9-42
NW/SE SEC. 9
1805' FSL
2113' FEL
EL 4688'
N 40.49887
W 104.44000
PDOP 2.9

②

BASHOR 9-43
SW/SE SEC. 9
852' FSL
2092' FEL
EL 4689'
N 40.49626
W 104.43999
PDOP 3.3

NOTES:

- 1) THIS SKETCH DOES NOT REPRESENT A BOUNDARY SURVEY.
- 2) THE DATUM FOR THE LATITUDES AND LONGITUDES ON THIS SKETCH IS NAD83.



0 500

Scale: 1" = 500'