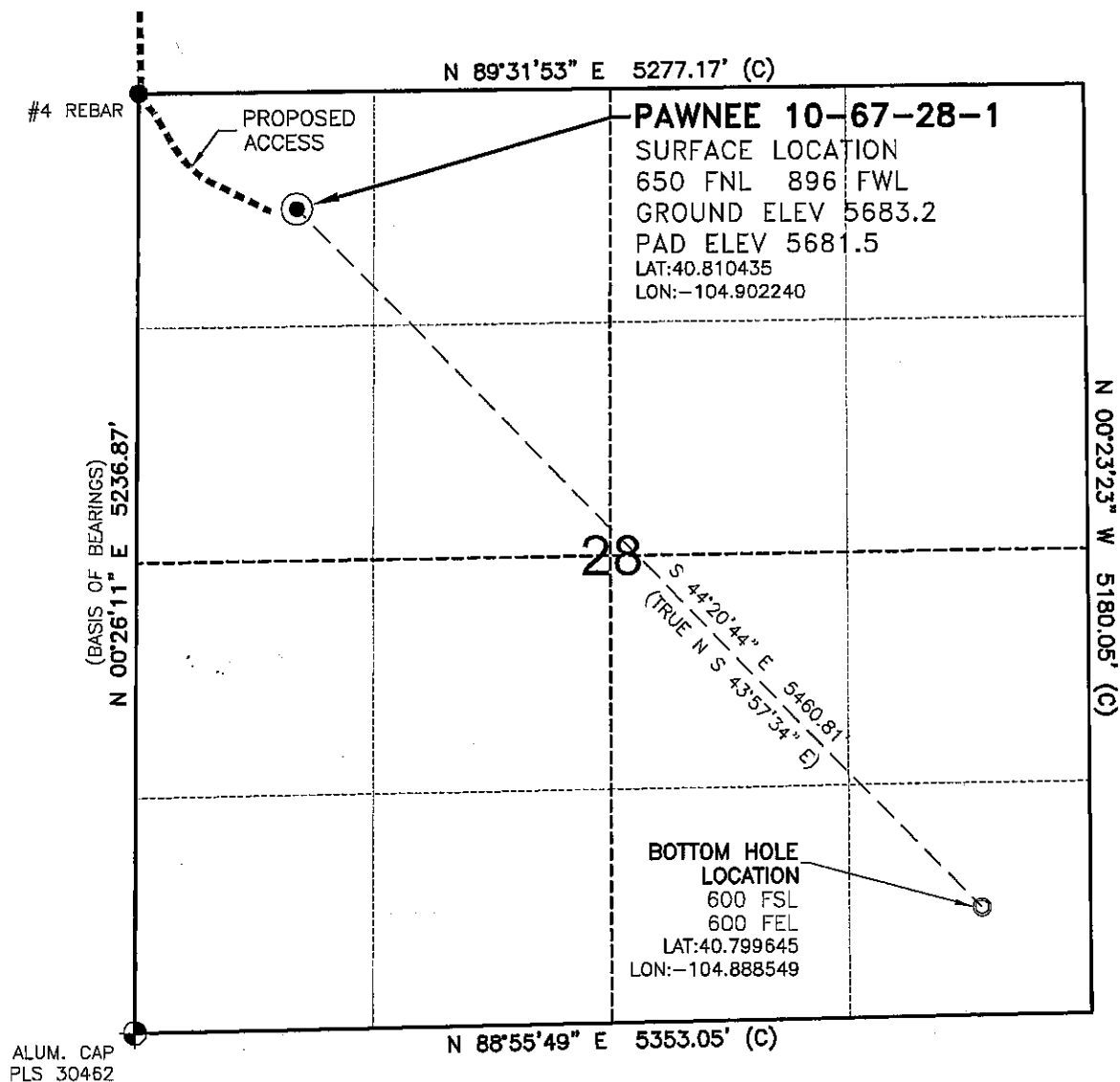


# WELL LOCATION MAP

PAWNEE 10-67-28-1 PAD



## SURVEYOR'S STATEMENT

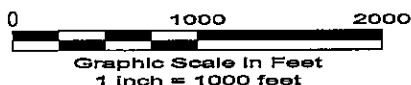
The undersigned hereby states that the well location shown hereon was staked on the ground based on existing monumentation and/or physical evidence found in the field and is correct to the best of my knowledge, information and belief.



## NOTES

- 1.) Horizontal coordinates based on NGS control point "HORA" and vertical datum based on NGS control point "P 390" with an elevation of 5199.21. NAVD 1988.
  - 2.) All directions, distances, and dimensions shown hereon are based on coordinates from the "Colorado coordinate system of 1983 north zone" (article 52 of title 38, C.R.S.).
  - 3.) All section line dimensions shown hereon are based on field measurements of existing monuments and/or physical evidence found in the field unless otherwise indicated. Refer to land survey plats deposited in Weld County.
  - 4.) Physical features shown hereon are for graphical representation only.
  - 5.) See Form 2A for visible improvements within 400' of wellhead.
  - 6.) Distances to nearest section lines are measured perpendicularly.
  - 7.) This is not a land survey nor land survey plat.
  - 8.) Date of Survey 4/2/10; Date of Drawing 9/9/10. REV 2
- PDOP Reading: 1.8 Instrument Operator: DJM

9/9/10



**RUBICON OIL & GAS LLC**  
**PAWNEE 10-67-28-1**

**SL NW1/4 NW1/4 SEC. 28 T10N R67W**  
**BL SE1/4 SE1/4 SEC. 28 T10N R67W**  
**6th PM WELD COUNTY COLORADO**