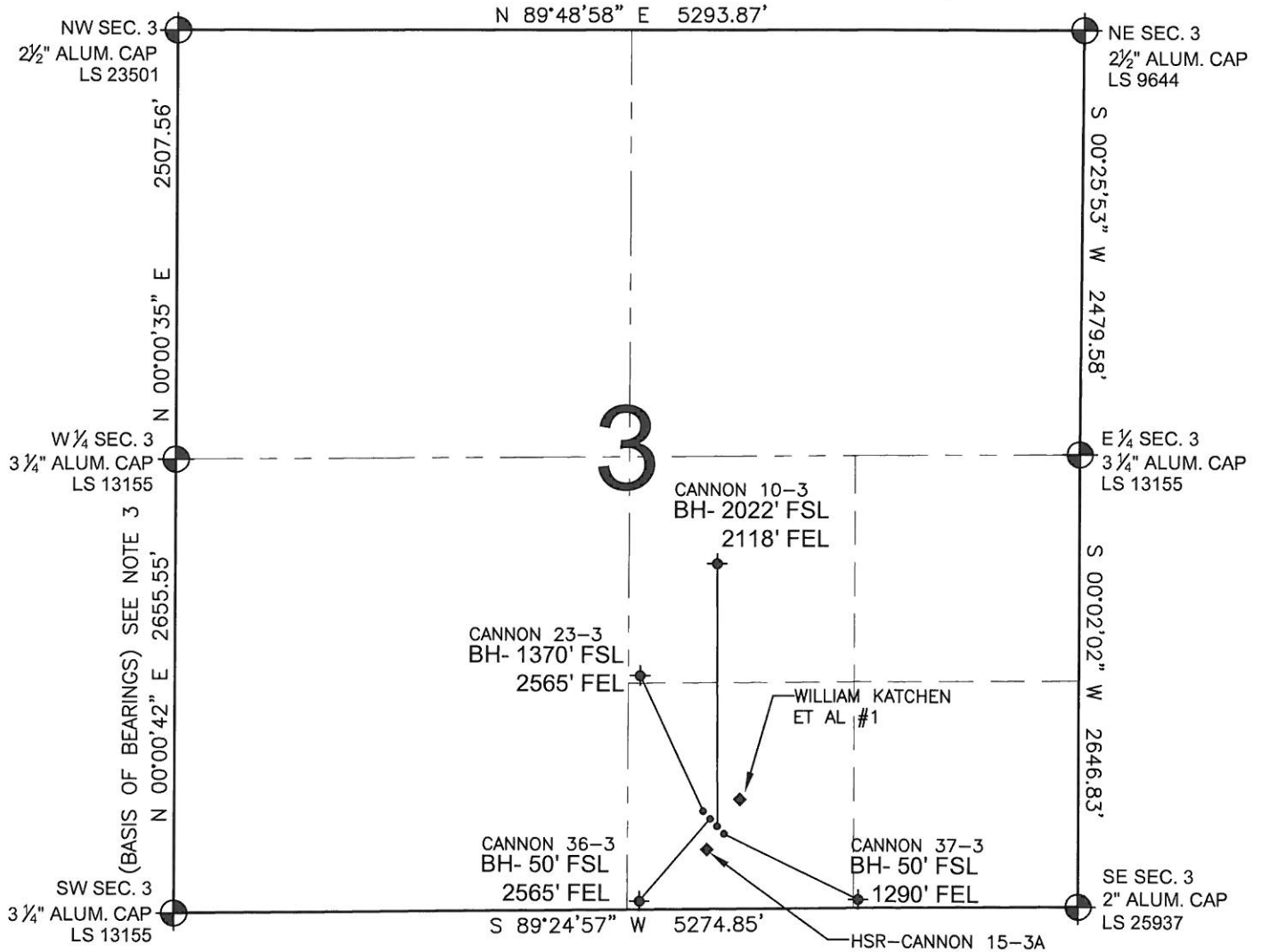


PAD DRAWING - CANNON 4 PAD

SECTION 3, TOWNSHIP 2 NORTH, RANGE 65 WEST, 6TH P.M.



LEGEND

- = EXISTING MONUMENT
- ◆ = BOTTOM HOLE
- BH= BOTTOM HOLE
- = PROPOSED WELL
- ◆ = EXISTING WELL

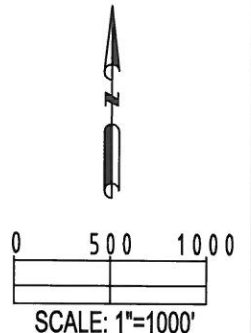
NOTES:


- THIS SURVEY WAS DONE BY GPS METHODS AND CONFORMS TO THE MINIMUM STANDARDS SET BY THE C.O.G.C.C., RULE NO. 215
- ELEVATIONS SHOWN AT THE WELL HEAD, AS WELL AS HORIZONTAL CONTROL, ARE BASED ON GPS-RTK VALUES DERIVED FROM DOING 2-HOUR STATIC GPS SESSIONS AND REDUCTIONS USING O.P.U.S. SOLUTIONS.
VERTICAL = NAVD88; HORIZONTAL = NAD83/92
- THE BEARINGS SHOWN HEREON ARE BASED ON GPS OBSERVATIONS BETWEEN THE MONUMENTS SHOWN HEREON AS FOUND ON THE FIELD DATE BELOW.
- DISTANCES SHOWN ARE AT GROUND LEVEL, AS MEASURED IN THE FIELD, WITH TIES TO WELLS MEASURED AT A PERPENDICULAR TO SECTION LINES.

NOTES:

CANNON 37-3 TO BE AT 495' FSL, 2121' FEL.
BOTTOM HOLE AT 50' FSL & 1290' FEL.
CANNON 10-3 TO BE AT 507' FSL, 2132' FEL.
BOTTOM HOLE AT 2022' FSL & 2118' FEL.
CANNON 36-3 TO BE AT 518' FSL, 2143' FEL.
BOTTOM HOLE AT 50' FSL & 2565' FEL.
CANNON 23-3 TO BE AT 530' FSL, 2154' FEL.
BOTTOM HOLE AT 1370' FSL & 2565' FEL.

HSR-CANNON 15-3A IS AT 460' FSL, 2156' FEL.
WILLIAM KATCHEN ET AL #1 (ABANDONED) HAD A PLANNED LOCATION OF 640' FSL & 1980' FEL.



REVISIONS		PREPARED BY:	 PFS Petroleum Field Services, LLC 1801 W. 13th Ave. Denver, CO 80204
INITIAL	DATE		

KERR-MCGEE OIL & GAS ONSHORE LP

FIELD DATE:
06-30-10

DRAWING DATE:
07-21-10

BY:
TJN

PAD NAME:
CANNON 4 PAD

SURFACE LOCATION:

WELD COUNTY, COLORADO
SW 1/4 SE 1/4, SEC.3, T2N, R65W