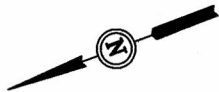


CHEVRON U.S.A., INC.

TYPICAL RIG LAYOUT FOR

UP #150X16, UP #151X16, UP #152X16 & UP #153X16
SECTION 16, T2N, R102W, 6th P.M.
NW 1/4 SW 1/4

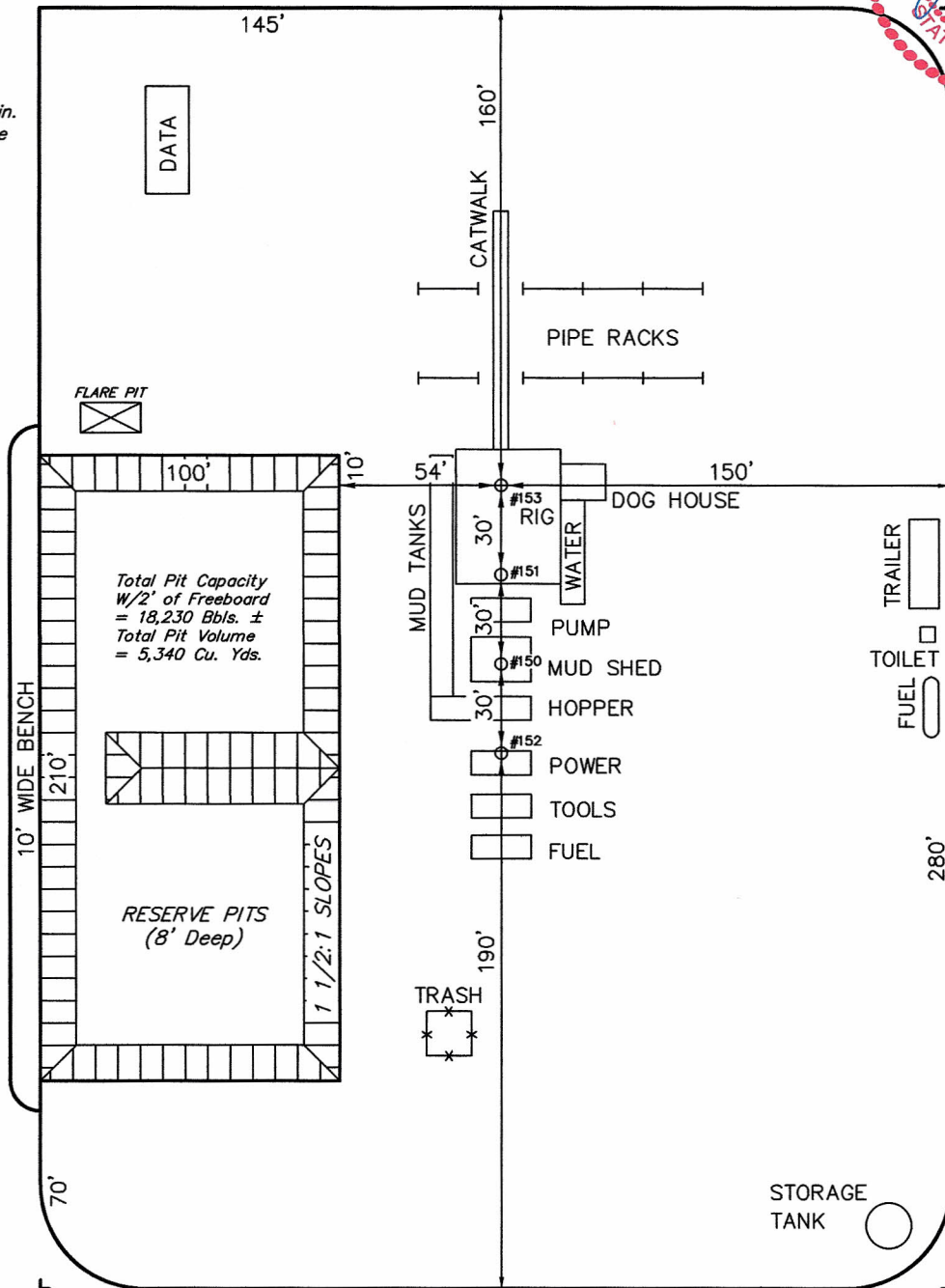
FIGURE #3



SCALE: 1" = 60'
DATE: 12-09-08
Drawn By: C.H.
REV: 02-17-09



NOTE:
Flare Pit is to
be located a min.
of 100' from the
Well Head.

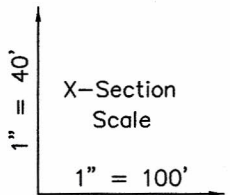


CHEVRON U.S.A., INC.

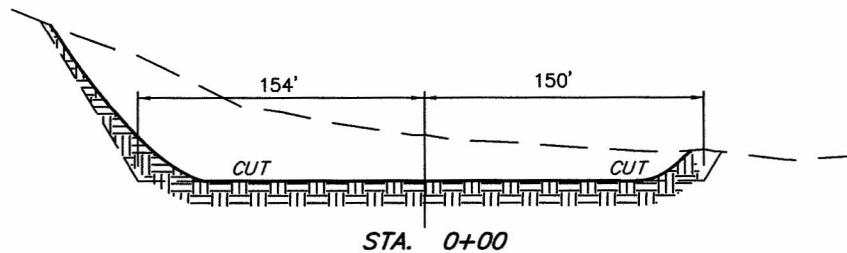
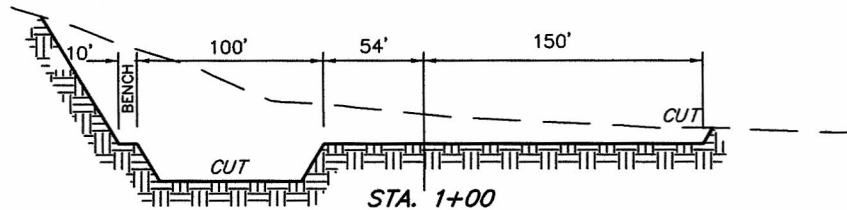
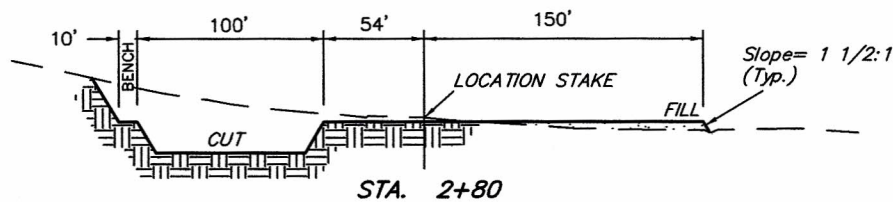
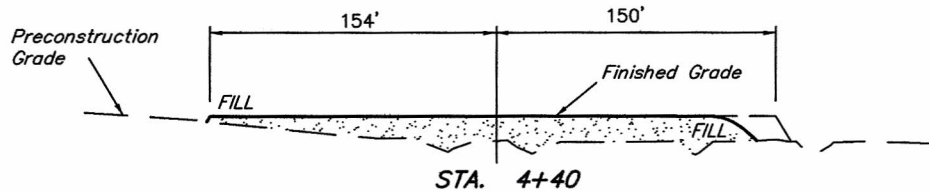
TYPICAL CROSS SECTION FOR

UP #150X16, UP #151X16, UP #152X16 & UP #153X16
SECTION 16, T2N, R102W, 6th P.M.
NW 1/4 SW 1/4

FIGURE #2



DATE: 12-09-08
Drawn By: C.H.
REV: 02-17-09



NOTE:

Topsoil should not be Stripped Below Finished Grade on Substructure Area.

APPROXIMATE ACREAGES

WELL SITE DISTURBANCE = ±3.621 ACRES
ACCESS ROAD DISTURBANCE = ±0.124 ACRES
PIPELINE DISTURBANCE = ±0.514 ACRES
TOTAL = ±4.259 ACRES

* NOTE:
FILL QUANTITY INCLUDES
5% FOR COMPACTION

APPROXIMATE YARDAGES

(6") Topsoil Stripping = 3,020 Cu. Yds.
Remaining Location = 30,940 Cu. Yds.
TOTAL CUT = 33,960 CU.YDS.
FILL = 5,790 CU.YDS.

EXCESS MATERIAL = 28,170 Cu. Yds.
Topsoil & Pit Backfill = 5,620 Cu. Yds.
(1/2 Pit Vol.)
EXCESS UNBALANCE = 22,550 Cu. Yds.
(After Interim Rehabilitation)

UINTAH ENGINEERING & LAND SURVEYING
85 So. 200 East * Vernal, Utah 84078 * (435) 789-1017