

LEGEND:

— EXISTING ROAD
 - - - PROPOSED ACCESS ROAD

CHEVRON U.S.A., INC.

UP #150X16, UP #151X16, UP #152X16 & UP #153X16
 SECTION 16, T2N, R102W, 6th P.M.
 NW 1/4 SW 1/4

U&L
 Uintah Engineering & Land Surveying
 85 South 200 East Vernal, Utah 84078
 (435) 789-1017 * FAX (435) 789-1813

TOPOGRAPHIC MAP
 10 21 08
 MONTH DAY YEAR
 SCALE: 1" = 2000' DRAWN BY: J.J. REVISED: 02-23-09

B
 TOPO

CHEVRON U.S.A., INC.

ADDENDUM TO LEGAL PLAT FOR

UP #150X16, UP #151X16, UP #152X16 & UP #153X16
SECTION 16, T2N, R102W, 6th P.M.
NW 1/4 SW 1/4

SCALE: 1" = 200'

DATE: 12-09-08

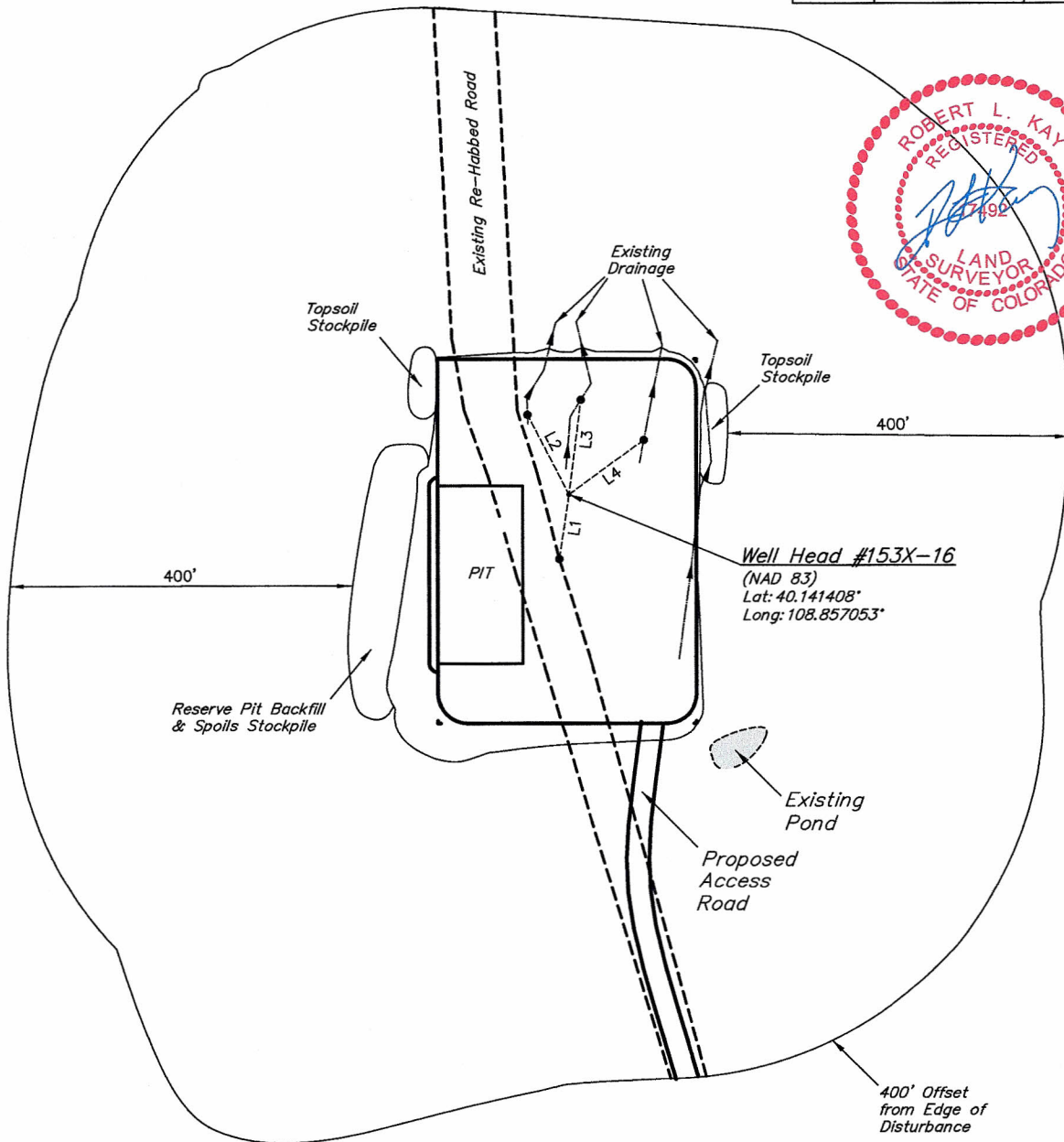
Drawn By: C.H.

REVISED: 02-17-09

REVISED: 06-14-10 S.L.

LINE TABLE

LINE	DIRECTION	LENGTH
L1	N61°02'42"W	76.98'
L2	N83°20'26"E	105.78'
L3	S62°16'20"E	112.61'
L4	S15°42'24"E	109.32'



SURFACE USE OF LOCATION IS
GRAZING, VEGETATION CONSISTS
MAINLY OF GRASSES.

UINTAH ENGINEERING & LAND SURVEYING
85 So. 200 East * Vernal, Utah 84078 * (435) 789-1017