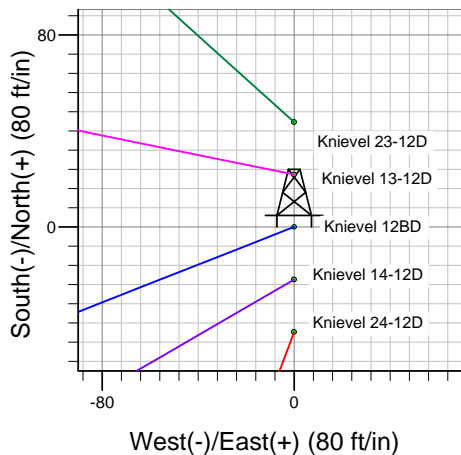
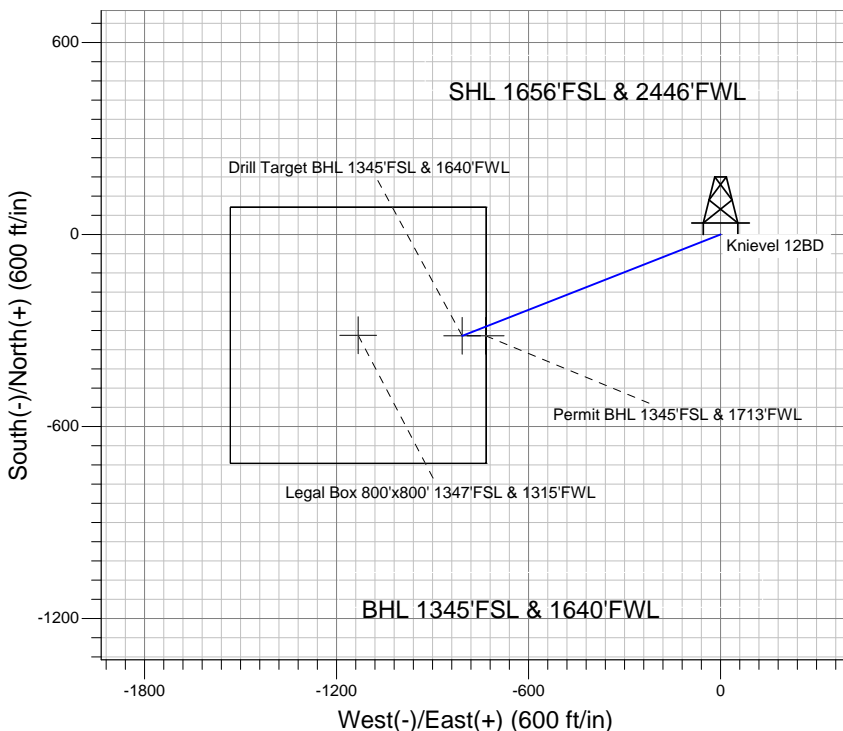
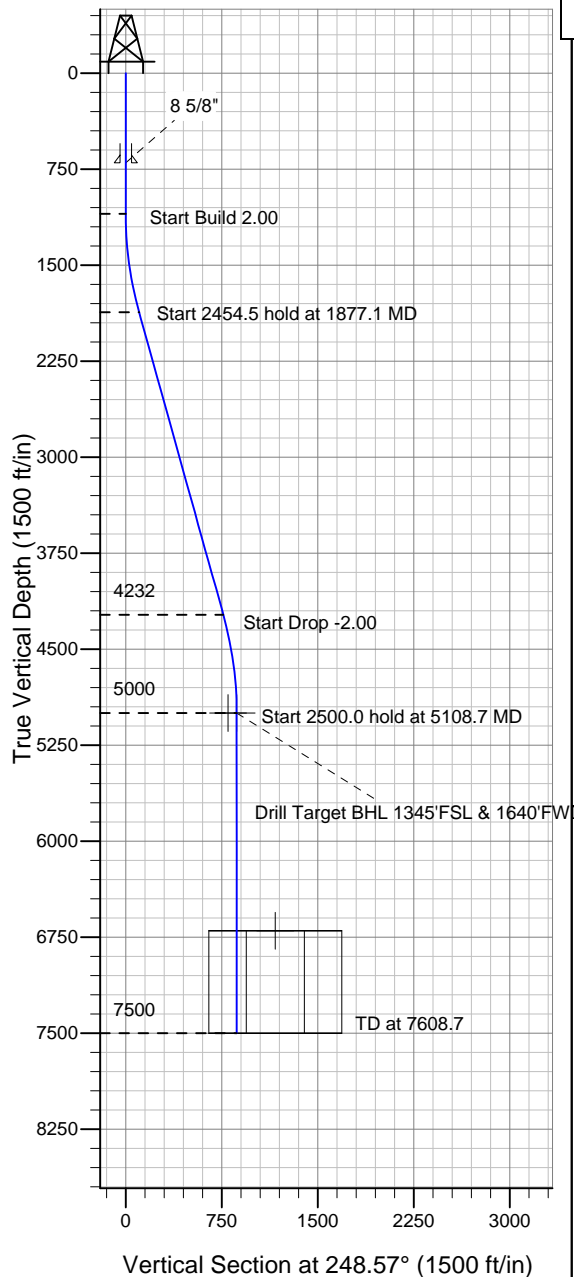


### Well Name: Knievel 12BD

Surface Location: Knievel 23-12D Pad Sec.12-T6N-R67W  
 North American Datum 1983 US State Plane 1983 Colorado Northern Zone  
 Ground Elevation: 4867.0  
 +N/-S +E/-W Northing Easting Latitude Longitude Slot  
 0.0 0.0 1425256.84 3182868.50 40° 29' 55.932 N 104° 50' 32.784 W  
 Original Well EleWELL @ 4880.0ft (Original Well Elev)

### PETROLEUM DEVELOPMENT CORP Weld County CO



Knievel 23-12D Pad Sec.12-T6N-R67W  
 Knievel 12BD  
 Plan #2 (10-04-10)  
 10:54, October 08 2010



Azimuths to True North  
 Magnetic North: 9.01°  
 Magnetic Field  
 Strength: 53247.9snT  
 Dip Angle: 67.14°  
 Date: 10/4/2010  
 Model: IGRF2010

#### WELLBORE TARGET DETAILS (LAT/LONG)

Name	TVD	+N/-S	+E/-W	Latitude	Longitude	Shape
Drill Target BHL 1345'FSL & 1640'FWL	5000.0	-316.9	-807.2	40° 29' 52.800 N	104° 50' 43.233 W	Point
Permit BHL 1345'FSL & 1713'FWL	5000.0	-316.9	-734.2	40° 29' 52.800 N	104° 50' 42.288 W	Point
Legal Box 800'x800' 1347'FSL & 1315'FWL	6700.0	-314.9	-1132.2	40° 29' 52.820 N	104° 50' 47.440 W	Rectangle (Sides: L800.0 W800.0)

#### SECTION DETAILS

Sec	MD	Inc	Azi	TVD	+N/-S	+E/-W	DLeg	TFace	VSec	Target
1	0.0	0.00	0.00	0.0	0.0	0.0	0.00	0.00	0.0	
2	1100.0	0.00	0.00	1100.0	0.0	0.0	0.00	0.00	0.0	
3	1877.1	15.54	248.57	1867.6	-38.3	-97.5	2.00	248.57	104.8	
4	4331.6	15.54	248.57	4232.4	-278.6	-709.7	0.00	0.00	762.5	
5	5108.7	0.00	0.00	5000.0	-316.9	-807.2	2.00	180.00	867.2	Drill Target BHL 1345'FSL & 1640'FWL
6	7608.7	0.00	0.00	7500.0	-316.9	-807.2	0.00	0.00	867.2	