

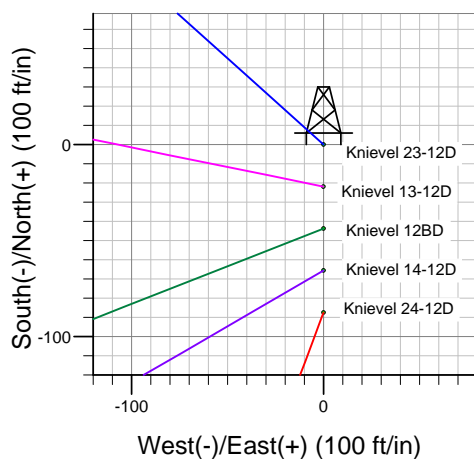
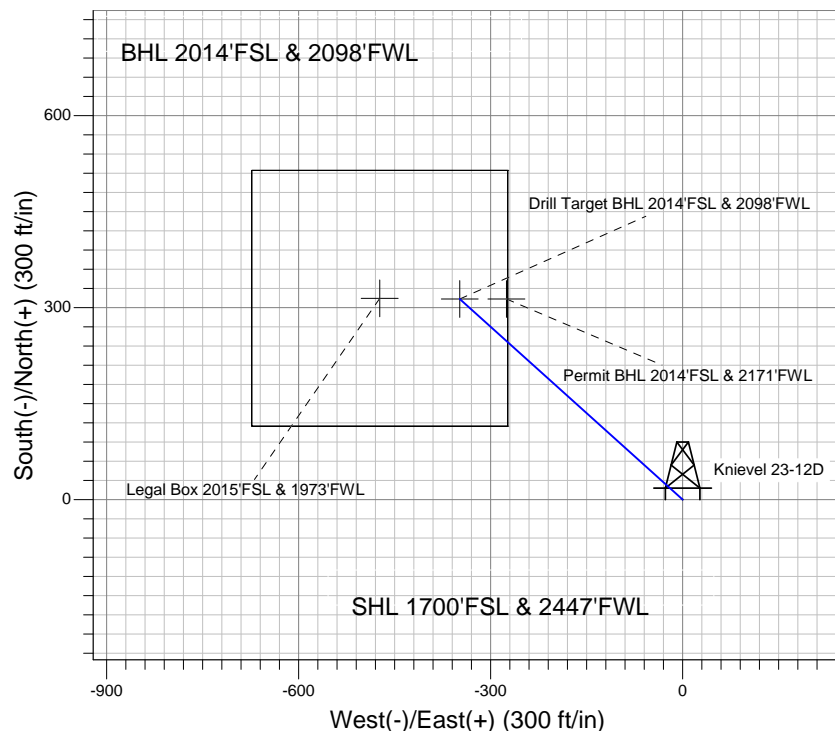
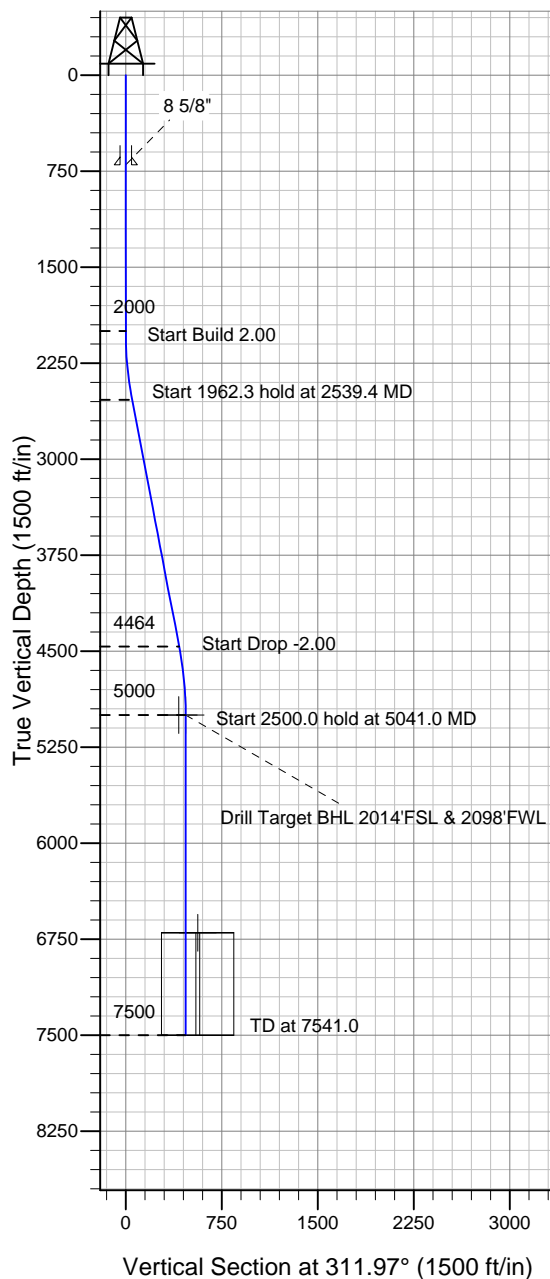
Well Name: Knievel 23-12D

Surface Location: Knievel 23-12D Pad Sec.12-T6N-R67W
North American Datum 1983, US State Plane 1983 Colorado Northern Zone
Ground Elevation: 4866.0

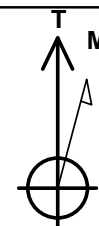
+N/-S	+E/-W	Northing	Easting	Latitude	Longitude	Slot
0.0	0.0	1425300.56	3182868.18	40° 29' 56.364 N	104° 50' 32.784 W	

Original Well EleWELL @ 4879.0ft (Original Well Elev)

PETROLEUM DEVELOPMENT CORP Weld County CO



Knievel 23-12D Pad Sec.12-T6N-R67W
Knievel 23-12D
Plan #2 (10-01-10)
8:05, October 08 2010



Azimuths to True North
Magnetic North: 9.01°
Magnetic Field
Strength: 53248.8snT
Dip Angle: 67.14°
Date: 10/1/2010
Model: IGRF2010

WELLBORE TARGET DETAILS (LAT/LONG)

Name	TVD	+N/-S	+E/-W	Latitude	Longitude	Shape
Drill Target BHL 2014'FSL & 2098'FWL	5000.0	313.3	-348.3	40° 29' 59.460 N	104° 50' 37.293 W	Point
Permit BHL 2014'FSL & 2171'FWL	5000.0	313.3	-275.3	40° 29' 59.460 N	104° 50' 36.348 W	Point
Legal Box 2015'FSL & 1973'FWL	6700.0	314.4	-473.3	40° 29' 59.470 N	104° 50' 38.911 W	Rectangle (Sides: L400.0 W400.0)

SECTION DETAILS

Sec	MD	Inc	Azi	TVD	+N/-S	+E/-W	DLeg	TFace	VSec	Target
1	0.0	0.00	0.00	0.0	0.0	0.0	0.00	0.00	0.0	
2	2000.0	0.00	0.00	2000.0	0.0	0.0	0.00	0.00	0.0	
3	2539.4	10.79	311.97	2536.2	33.9	-37.6	2.00	311.97	50.6	
4	4501.7	10.79	311.97	4463.8	279.5	-310.7	0.00	0.00	417.9	
5	5041.0	0.00	0.00	5000.0	313.3	-348.3	2.00	180.00	468.5	Drill Target BHL 2014'FSL & 2098'FWL
6	7541.0	0.00	0.00	7500.0	313.3	-348.3	0.00	0.00	468.5	