

LEGEND:

● PROPOSED LOCATION



EnCana OIL & GAS (USA) INC.

WELL PAD G29 595

SECTION 29, T5S, R95W, 6th P.M.

S 1/2 NE 1/4

SHEET 8 OF 11



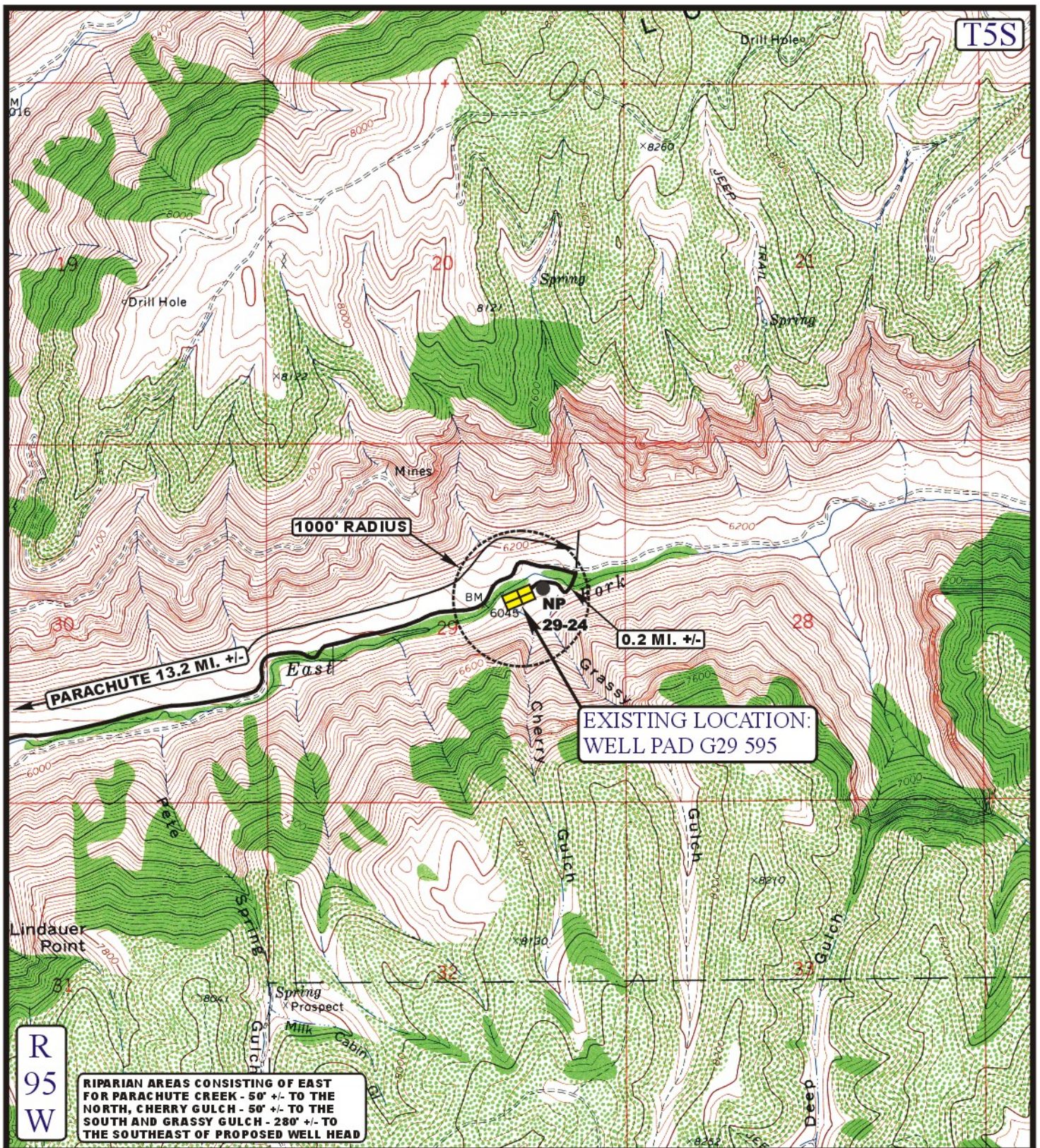
Uintah Engineering & Land Surveying
85 South 200 East Vernal, Utah 84078
(435) 789-1017 * FAX (435) 789-1813

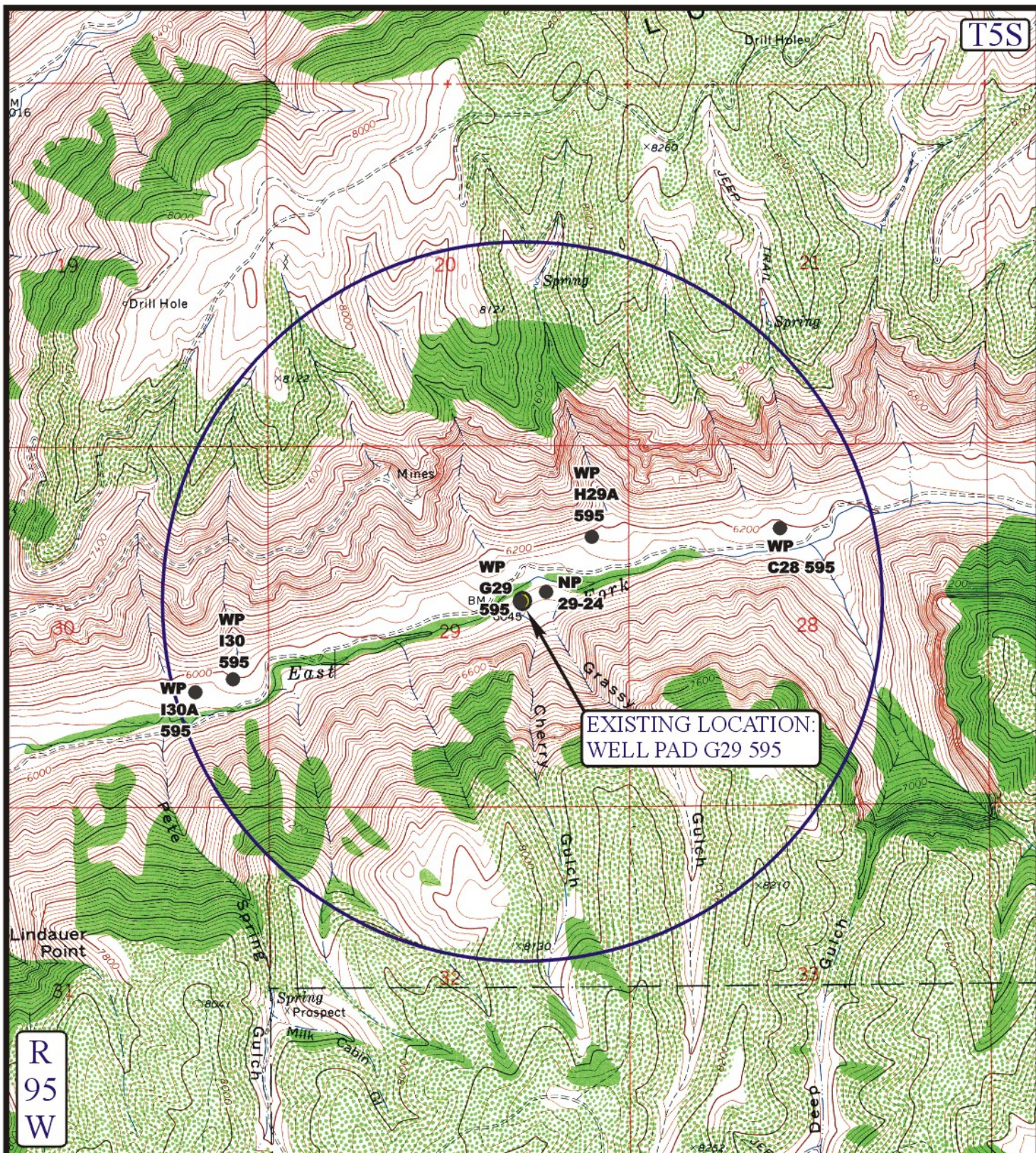
TOPOGRAPHIC
MAP

11 1 05
MONTH DAY YEAR

SCALE: 1:100,000 DRAWN BY: J.L.G. REVISED: 06-09-10







LEGEND:

- | | |
|-------------------|-------------------------|
| ⊗ DISPOSAL WELLS | ⊗ WATER WELLS |
| ● PRODUCING WELLS | ● ABANDONED WELLS |
| ● SHUT IN WELLS | ● TEMPORARILY ABANDONED |



Uintah Engineering & Land Surveying
 85 South 200 East Vernal, Utah 84078
 (435) 789-1017 * FAX (435) 789-1813



EnCana OIL & GAS (USA) INC.

WELL PAD G29 595

SECTION 29, T5S, R95W, 6th P.M.

S 1/2 NE 1/4

SHEET 10 OF 11

TOPOGRAPHIC
MAP

11 **1** **05**
 MONTH DAY YEAR

SCALE: 1" = 2000' DRAWN BY: J.L.G. REVISED: 06-09-10

C
 TOPO

EnCana OIL & GAS (USA) INC.
WELL PAD G29 595
SECTION 29, T5S, R95W, 6th P.M.

PROCEED IN A NORTHWESTERLY, THEN NORTHERLY DIRECTION FROM PARACHUTE, COLORADO APPROXIMATELY 11.1 MILES TO THE JUNCTION OF THIS ROAD AND AN EXISTING ROAD TO THE NORTHEAST; TURN RIGHT AND PROCEED IN A NORTHEASTERLY DIRECTION APPROXIMATELY 2.1 MILES TO THE JUNCTION OF THIS ROAD AND AN EXISTING ROAD TO THE SOUTH; TURN RIGHT AND PROCEED IN A SOUTHERLY, THEN SOUTHWESTERLY, THEN NORTHWESTERLY, THEN SOUTHWESTERLY DIRECTION APPROXIMATELY 0.2 MILES TO THE EXISTING LOCATION.

TOTAL DISTANCE FROM PARACHUTE, COLORADO TO THE EXISTING LOCATION IS APPROXIMATELY 13.4 MILES.