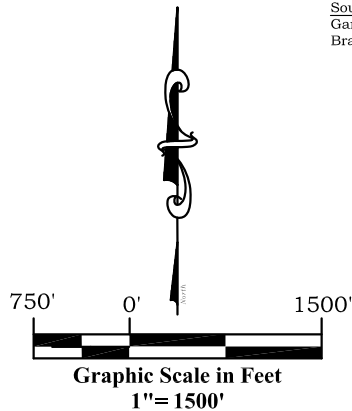
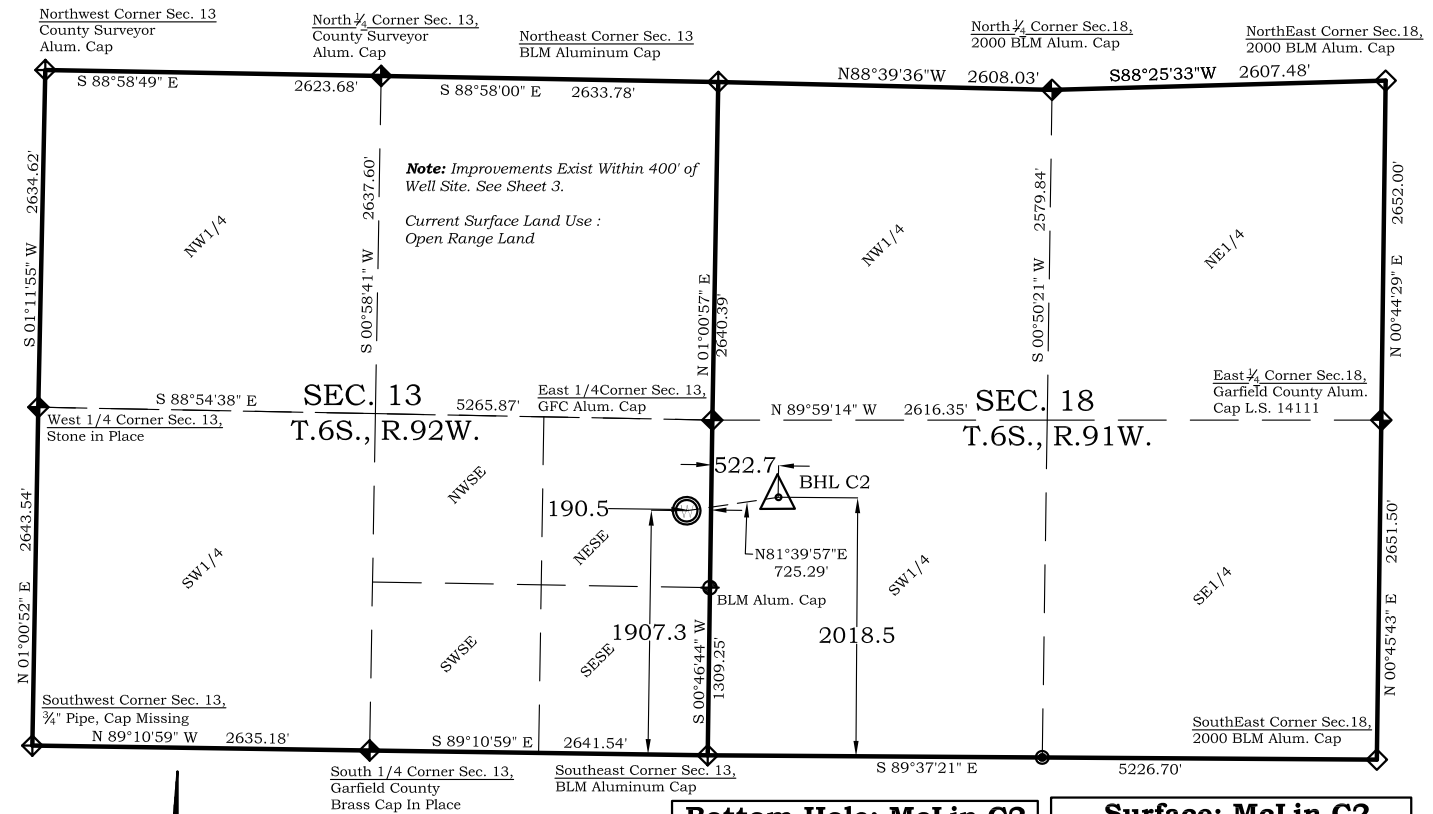


**Well Location Plat**  
**McLin C2**  
**Section 13, Township 6 South, Range 92 West**



**Legend**

- ◆ - Field Surveyed Section Corner
- ◆ - Field Surveyed Quarter Corner
- ⊙ - Calculated Section Corner Location
- ⊕ - Field Surveyed 1/6 Corner

**Bottom Hole: McLin C2**

2018' FSL  
523' FWL  
**NAD83**  
Lat: 39.525620612°N  
Long: 107.604498920°W  
**NAD27**  
Lat: 39.5256439°N  
Long: 107.603886°W

**Surface: McLin C2**

1907' FSL  
190' FEL  
Gnd El= 5725.2  
Pad El= 5726.0  
**NAD83**  
Lat: 39.525275158°N  
Long: 107.607030465°W  
**NAD27**  
Lat: 39.525294548°N  
Long: 107.606417457°W  
UTM 13 NORTH  
**NAD 1983**  
NORTHING  
14364522.752  
EASTING  
905235.880

**Prepared For Antero Resources**

**Proposed McLin C2 Well Situate in The NE 1/4 SE 1/4 Section 13, Township 6 South, Range 92 West of the 6 th. Principal Meridian, County of Garfield, State of Colorado**

**SURVEYOR'S CERTIFICATE**

I, SCOTT E. AIBNER, A REGISTERED LAND SURVEYOR, LICENSED UNDER THE LAWS OF THE STATE OF COLORADO DO HEREBY CERTIFY THAT THE SURVEY SHOWN HEREON WAS PREPARED BY RIVER VALLEY SURVEY, INC., FOR ANTERO RESOURCES, BY ME OR UNDER MY DIRECT SUPERVISION AND THAT THIS PLAT IS A TRUE REPRESENTATION THEREOF.

BY: SCOTT E. AIBNER, COLORADO REG. NO. 31143

**Notes:**

1. LATITUDE AND LONGITUDE COORDINATES ARE DIFFERENTIALLY CORRECTED AND BASED ON PUBLISHED NGS CONTROL STATION "WDP-5". SYSTEM: UTM ZONE: 13 NORTH DATUM: NAD 1983 (CONUS)
2. ELEVATIONS ARE BASED ON NAVD OF 1983.
3. ALL BOTTOM AND TOP HOLE LOCATIONS ARE MEASURED 90 DEGREES FROM SECTION LINE.
4. USGS QUADRANGLE MAP "SILT".
5. CURRENT SURFACE LAND USE: HAY FIELD.
6. PDOP AT THE TIME OF LOCATION OF SURFACE WELL = 2.4



**River Valley Survey, Inc.**  
110 East 3rd. Street, Suite 213  
Rifle, Colorado 81650  
Ph: 970-379-7846

**Project: McLin C PAD**

**Field Date: 01-19-10**

**Date: 08-09-10**

**Scale: 1"= 1500'**

**Sheet: 1 of 11**

**Well Location Plat**  
**Prepared For Antero Resources**

**Situate In:**  
SE 1/4 Section 13, T6S., R. 92 W. of the  
6th P.M., Garfield County, Colorado

