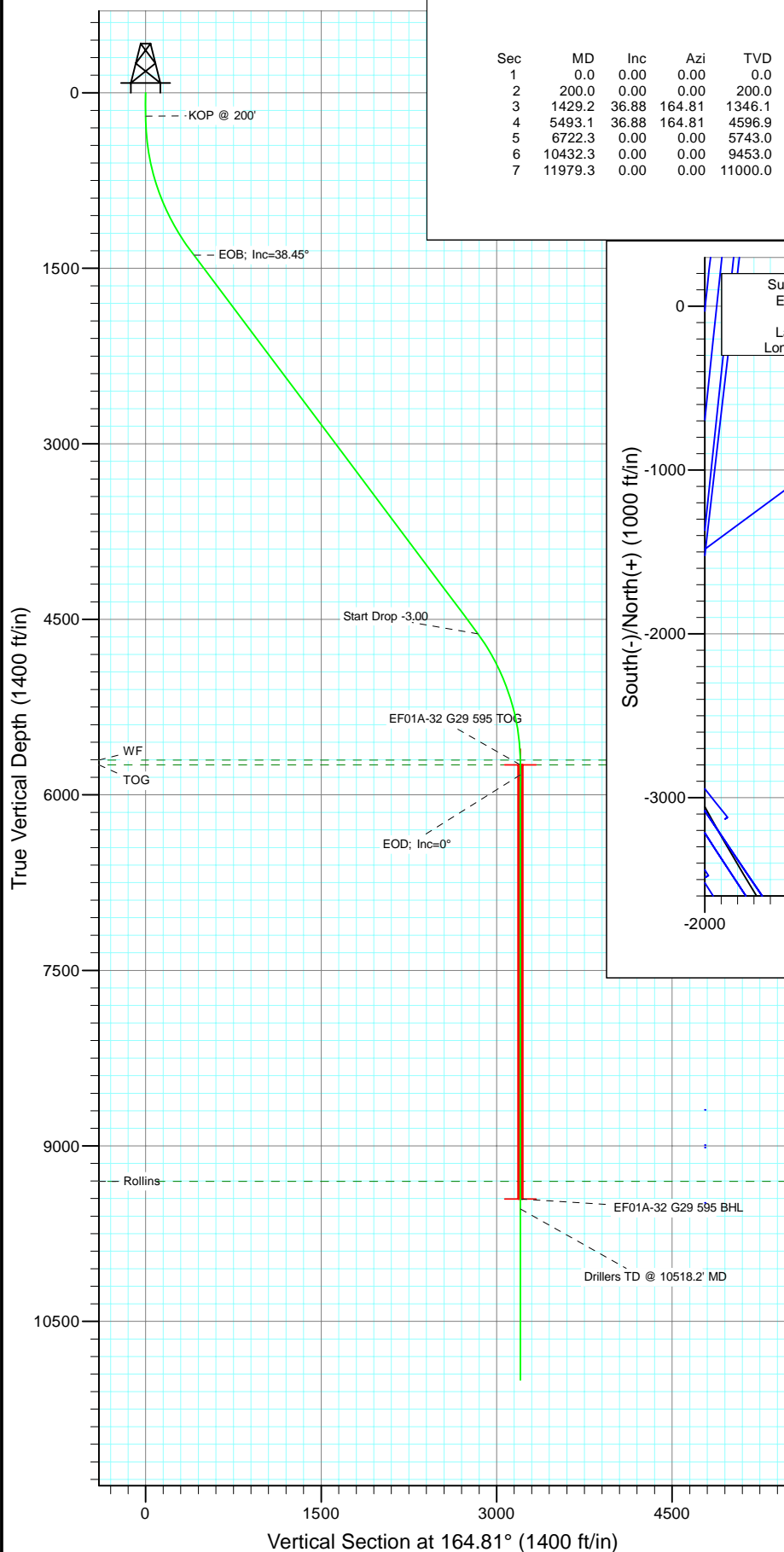
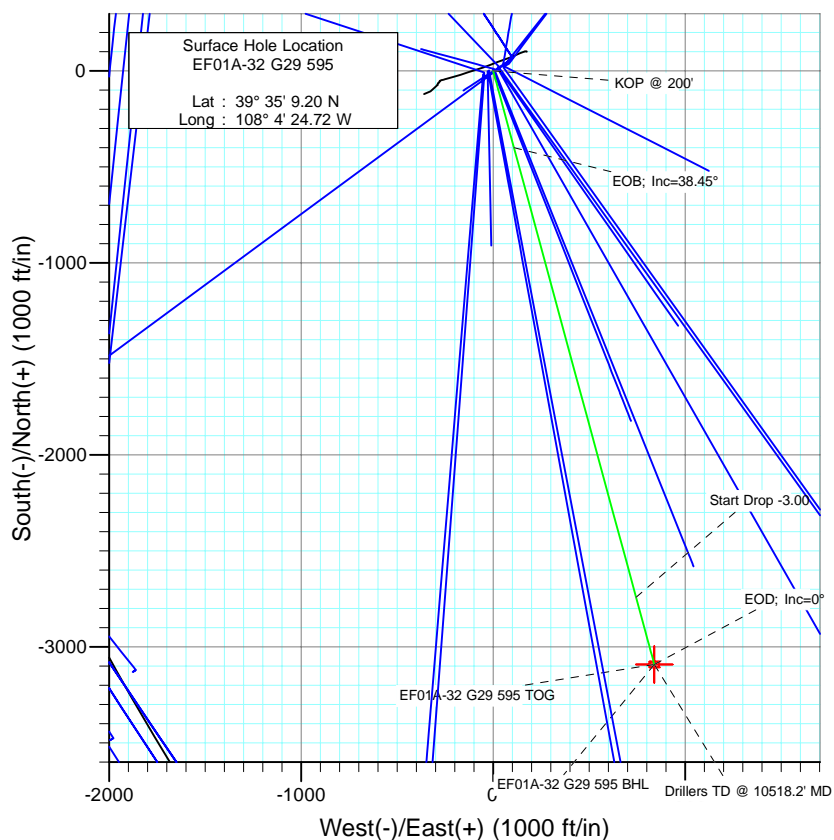




Project: North Piceance
Site: G29 595
Well: EF01A-32 G29 595
Wellbore: DD
Design: Plan #2



SECTION DETAILS										
Sec	MD	Inc	Azi	TVD	+N/-S	+E/-W	Dleg	TFace	VSection	Target
1	0.0	0.00	0.00	0.0	0.0	0.0	0.00	0.00	0.0	
2	200.0	0.00	0.00	200.0	0.0	0.0	0.00	0.00	0.0	
3	1429.2	36.88	164.81	1346.1	-368.8	100.1	3.00	164.81	382.1	
4	5493.1	36.88	164.81	4596.9	-2722.3	739.2	0.00	0.00	2820.9	
5	6722.3	0.00	0.00	5743.0	-3091.0	839.4	3.00	180.00	3203.0	EF01A-32 G29 595 TOG
6	10432.3	0.00	0.00	9453.0	-3091.0	839.4	0.00	0.00	3203.0	EF01A-32 G29 595 BHL
7	11979.3	0.00	0.00	11000.0	-3091.0	839.4	0.00	0.00	3203.0	



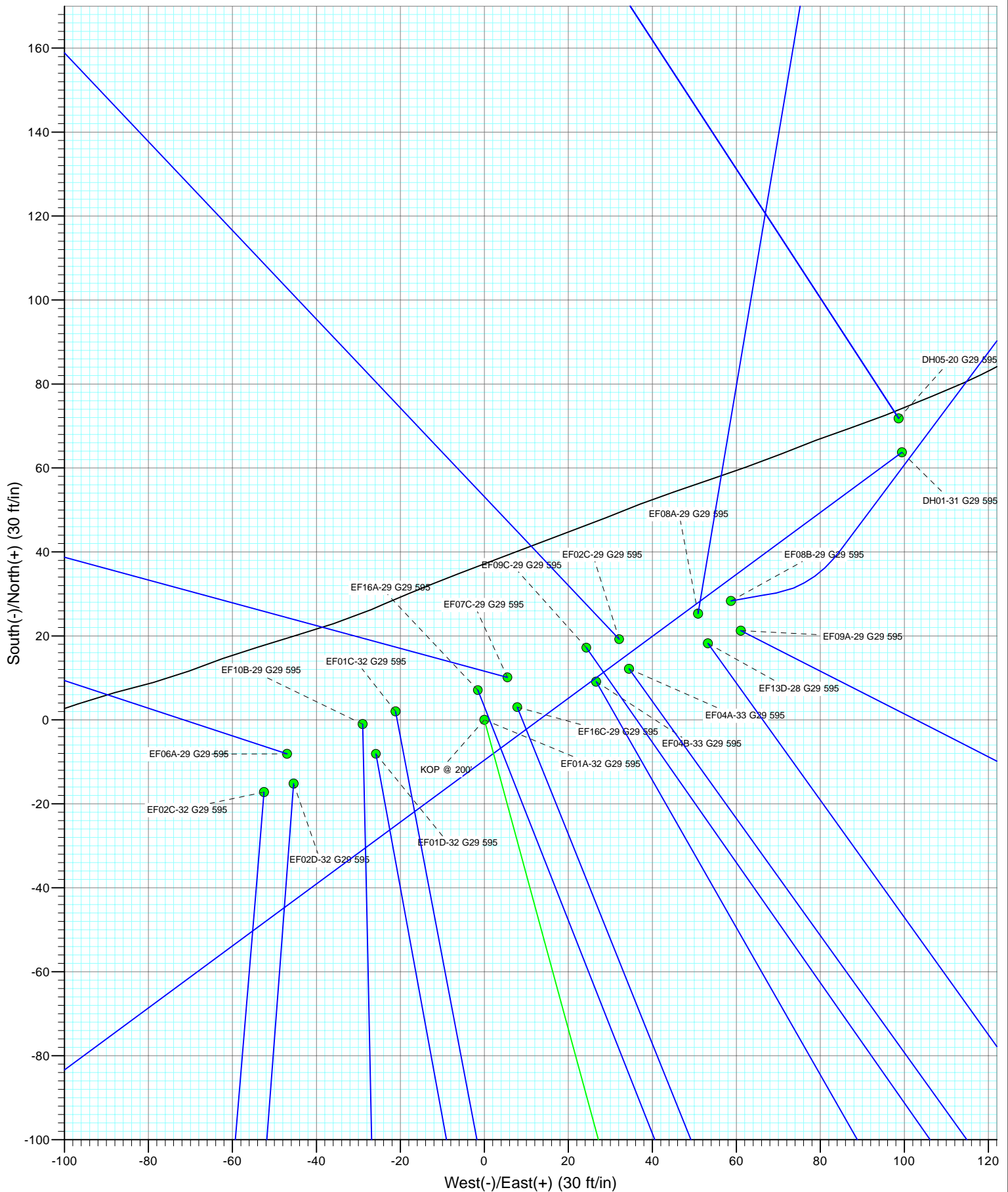
FORMATION TOP DETAILS			
TVDPath	MDPath	Formation	
5703.0	6682.3	WF	
5743.0	6722.3	TOG	
9303.0	10282.3	Rollins	

		Azimuths to True North Magnetic North: 10.50°	
		Magnetic Field Strength: 52417.7snT Dip Angle: 65.84° Date: 6/18/2010 Model: IGRF200510	

Plan #2 EF01A-32 G29 595 105XXX; BH Ground Elevation @ 6085.0 KBE @ 6118.0ft (Original Well Elev) North American Datum 1983 Well EF01A-32 G29 595, True North					
Type	Target	Azimuth	Origin	Type	N/S
Target	EF01A-32 G29 595 BHL	164.81	Slot	1	0.0
Name	TVD	+N/-S	+E/-W	Latitude	Longitude
EF01A-32 G29 595 TOG	5743.0	-3091.0	839.439° 34'	38.65 N	108° 4' 14.00 W
EF01A-32 G29 595 BHL	9453.0	-3091.0	839.439° 34'	38.65 N	108° 4' 14.00 W

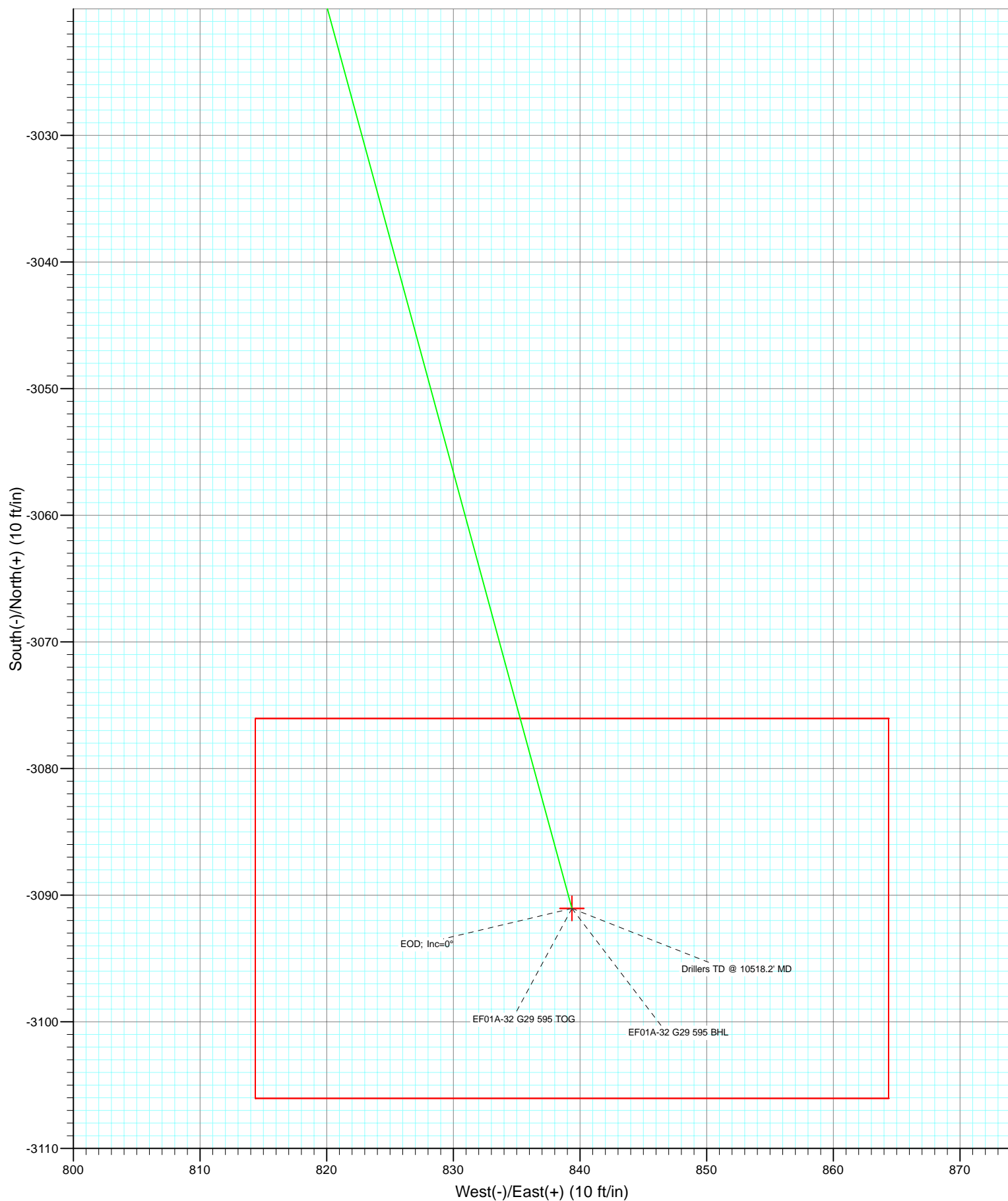


Project: North Piceance
Site: G29 595
Well: EF01A-32 G29 595
Wellbore: DD
Design: Plan #2





Project: North Piceance
Site: G29 595
Well: EF01A-32 G29 595
Wellbore: DD
Design: Plan #2



Cathedral Energy Services

Planning Report

Database:	EDM 5000.1 US Multi Users DB	Local Co-ordinate Reference:	Well EF01A-32 G29 595
Company:	EnCana Oil & Gas (USA) Inc	TVD Reference:	KBE @ 6118.0ft (Original Well Elev)
Project:	North Piceance	MD Reference:	KBE @ 6118.0ft (Original Well Elev)
Site:	G29 595	North Reference:	True
Well:	EF01A-32 G29 595	Survey Calculation Method:	Minimum Curvature
Wellbore:	DD		
Design:	Plan #2		

Project	North Piceance		
Map System:	US State Plane 1983	System Datum:	Mean Sea Level
Geo Datum:	North American Datum 1983		
Map Zone:	Colorado Central Zone		

Site		G29 595			
Site Position:		Northing:	1,648,557.90 ft	Latitude:	39° 35' 9.12 N
From:	Lat/Long	Easting:	2,274,729.57 ft	Longitude:	108° 4' 25.32 W
Position Uncertainty:	0.0 ft	Slot Radius:	13.200 in	Grid Convergence:	-1.62 °

Well	EF01A-32 G29 595					
Well Position	+N/-S	0.0 ft	Northing:	1,648,564.64 ft	Latitude:	39° 35' 9.20 N
	+E/-W	0.0 ft	Easting:	2,274,776.76 ft	Longitude:	108° 4' 24.72 W
Position Uncertainty		0.0 ft	Wellhead Elevation:	ft	Ground Level:	6,085.0 ft

Wellbore	DD				
Magnetics	Model Name	Sample Date	Declination (°)	Dip Angle (°)	Field Strength (nT)
	IGRF200510	6/18/2010	10.50	65.84	52,418

Design	Plan #2				
Audit Notes:					
Version:	Phase:	PLAN	Tie On Depth:	0.0	
Vertical Section:	Depth From (TVD) (ft)	+N/-S (ft)	+E/-W (ft)	Direction (°)	
	0.0	0.0	0.0	164.81	

Plan Sections										
Measured Depth (ft)	Inclination (°)	Azimuth (°)	Vertical Depth (ft)	+N/-S (ft)	+E/-W (ft)	Dogleg Rate (°/100ft)	Build Rate (°/100ft)	Turn Rate (°/100ft)	TFO (°)	Target
0.0	0.00	0.00	0.0	0.0	0.0	0.00	0.00	0.00	0.00	
200.0	0.00	0.00	200.0	0.0	0.0	0.00	0.00	0.00	0.00	
1,481.7	38.45	202.41	1,387.6	-382.9	-157.9	3.00	3.00	0.00	202.41	
5,526.6	38.45	202.41	4,555.4	-2,708.2	-1,116.8	0.00	0.00	0.00	0.00	
6,808.2	0.00	0.00	5,743.0	-3,091.0	-1,274.7	3.00	-3.00	0.00	180.00	EF01A-32 G29 595 T
10,518.2	0.00	0.00	9,453.0	-3,091.0	-1,274.7	0.00	0.00	0.00	0.00	EF01A-32 G29 595 B
12,065.2	0.00	0.00	11,000.0	-3,091.0	-1,274.7	0.00	0.00	0.00	0.00	

Cathedral Energy Services

Planning Report

Database:	EDM 5000.1 US Multi Users DB	Local Co-ordinate Reference:	Well EF01A-32 G29 595
Company:	EnCana Oil & Gas (USA) Inc	TVD Reference:	KBE @ 6118.0ft (Original Well Elev)
Project:	North Piceance	MD Reference:	KBE @ 6118.0ft (Original Well Elev)
Site:	G29 595	North Reference:	True
Well:	EF01A-32 G29 595	Survey Calculation Method:	Minimum Curvature
Wellbore:	DD		
Design:	Plan #2		

Planned Survey

Measured Depth (ft)	Inclination (°)	Azimuth (°)	Vertical Depth (ft)	+N/-S (ft)	+E/-W (ft)	Vertical Section (ft)	Dogleg Rate (°/100ft)	Build Rate (°/100ft)	Comments / Formations
0.0	0.00	0.00	0.0	0.0	0.0	0.0	0.00	0.00	
100.0	0.00	0.00	100.0	0.0	0.0	0.0	0.00	0.00	
200.0	0.00	0.00	200.0	0.0	0.0	0.0	0.00	0.00	KOP @ 200'
300.0	3.00	202.41	300.0	-2.4	-1.0	2.1	3.00	3.00	
400.0	6.00	202.41	399.6	-9.7	-4.0	8.3	3.00	3.00	
500.0	9.00	202.41	498.8	-21.7	-9.0	18.6	3.00	3.00	
600.0	12.00	202.41	597.1	-38.6	-15.9	33.1	3.00	3.00	
700.0	15.00	202.41	694.3	-60.2	-24.8	51.6	3.00	3.00	
800.0	18.00	202.41	790.2	-86.4	-35.6	74.1	3.00	3.00	
900.0	21.00	202.41	884.4	-117.3	-48.4	100.5	3.00	3.00	
1,000.0	24.00	202.41	976.8	-152.6	-62.9	130.8	3.00	3.00	
1,100.0	27.00	202.41	1,067.1	-192.4	-79.4	164.9	3.00	3.00	
1,200.0	30.00	202.41	1,154.9	-236.5	-97.5	202.7	3.00	3.00	
1,300.0	33.00	202.41	1,240.2	-284.8	-117.5	244.1	3.00	3.00	
1,400.0	36.00	202.41	1,322.6	-337.2	-139.1	289.0	3.00	3.00	
1,481.7	38.45	202.41	1,387.6	-382.9	-157.9	328.1	3.00	3.00	EOB; Inc=38.45°
1,500.0	38.45	202.41	1,402.0	-393.4	-162.2	337.1	0.00	0.00	
1,600.0	38.45	202.41	1,480.3	-450.9	-185.9	386.4	0.00	0.00	
1,700.0	38.45	202.41	1,558.6	-508.4	-209.7	435.7	0.00	0.00	
1,800.0	38.45	202.41	1,636.9	-565.9	-233.4	484.9	0.00	0.00	
1,900.0	38.45	202.41	1,715.2	-623.4	-257.1	534.2	0.00	0.00	
2,000.0	38.45	202.41	1,793.5	-680.8	-280.8	583.5	0.00	0.00	
2,100.0	38.45	202.41	1,871.9	-738.3	-304.5	632.7	0.00	0.00	
2,200.0	38.45	202.41	1,950.2	-795.8	-328.2	682.0	0.00	0.00	
2,300.0	38.45	202.41	2,028.5	-853.3	-351.9	731.3	0.00	0.00	
2,400.0	38.45	202.41	2,106.8	-910.8	-375.6	780.5	0.00	0.00	
2,500.0	38.45	202.41	2,185.1	-968.3	-399.3	829.8	0.00	0.00	
2,600.0	38.45	202.41	2,263.4	-1,025.8	-423.0	879.1	0.00	0.00	
2,700.0	38.45	202.41	2,341.8	-1,083.3	-446.7	928.3	0.00	0.00	
2,800.0	38.45	202.41	2,420.1	-1,140.7	-470.4	977.6	0.00	0.00	
2,900.0	38.45	202.41	2,498.4	-1,198.2	-494.1	1,026.9	0.00	0.00	
3,000.0	38.45	202.41	2,576.7	-1,255.7	-517.8	1,076.1	0.00	0.00	
3,100.0	38.45	202.41	2,655.0	-1,313.2	-541.5	1,125.4	0.00	0.00	
3,200.0	38.45	202.41	2,733.3	-1,370.7	-565.3	1,174.7	0.00	0.00	
3,300.0	38.45	202.41	2,811.6	-1,428.2	-589.0	1,223.9	0.00	0.00	
3,400.0	38.45	202.41	2,890.0	-1,485.7	-612.7	1,273.2	0.00	0.00	
3,500.0	38.45	202.41	2,968.3	-1,543.1	-636.4	1,322.4	0.00	0.00	
3,600.0	38.45	202.41	3,046.6	-1,600.6	-660.1	1,371.7	0.00	0.00	
3,700.0	38.45	202.41	3,124.9	-1,658.1	-683.8	1,421.0	0.00	0.00	
3,800.0	38.45	202.41	3,203.2	-1,715.6	-707.5	1,470.2	0.00	0.00	
3,900.0	38.45	202.41	3,281.5	-1,773.1	-731.2	1,519.5	0.00	0.00	
4,000.0	38.45	202.41	3,359.9	-1,830.6	-754.9	1,568.8	0.00	0.00	
4,100.0	38.45	202.41	3,438.2	-1,888.1	-778.6	1,618.0	0.00	0.00	
4,200.0	38.45	202.41	3,516.5	-1,945.5	-802.3	1,667.3	0.00	0.00	
4,300.0	38.45	202.41	3,594.8	-2,003.0	-826.0	1,716.6	0.00	0.00	
4,400.0	38.45	202.41	3,673.1	-2,060.5	-849.7	1,765.8	0.00	0.00	
4,500.0	38.45	202.41	3,751.4	-2,118.0	-873.4	1,815.1	0.00	0.00	
4,600.0	38.45	202.41	3,829.7	-2,175.5	-897.1	1,864.4	0.00	0.00	
4,700.0	38.45	202.41	3,908.1	-2,233.0	-920.9	1,913.6	0.00	0.00	
4,800.0	38.45	202.41	3,986.4	-2,290.5	-944.6	1,962.9	0.00	0.00	
4,900.0	38.45	202.41	4,064.7	-2,348.0	-968.3	2,012.2	0.00	0.00	
5,000.0	38.45	202.41	4,143.0	-2,405.4	-992.0	2,061.4	0.00	0.00	

Cathedral Energy Services

Planning Report

Database:	EDM 5000.1 US Multi Users DB	Local Co-ordinate Reference:	Well EF01A-32 G29 595
Company:	EnCana Oil & Gas (USA) Inc	TVD Reference:	KBE @ 6118.0ft (Original Well Elev)
Project:	North Piceance	MD Reference:	KBE @ 6118.0ft (Original Well Elev)
Site:	G29 595	North Reference:	True
Well:	EF01A-32 G29 595	Survey Calculation Method:	Minimum Curvature
Wellbore:	DD		
Design:	Plan #2		

Planned Survey									
Measured Depth (ft)	Inclination (°)	Azimuth (°)	Vertical Depth (ft)	+N/-S (ft)	+E/-W (ft)	Vertical Section (ft)	Dogleg Rate (°/100ft)	Build Rate (°/100ft)	Comments / Formations
5,100.0	38.45	202.41	4,221.3	-2,462.9	-1,015.7	2,110.7	0.00	0.00	
5,200.0	38.45	202.41	4,299.6	-2,520.4	-1,039.4	2,160.0	0.00	0.00	
5,300.0	38.45	202.41	4,377.9	-2,577.9	-1,063.1	2,209.2	0.00	0.00	
5,400.0	38.45	202.41	4,456.3	-2,635.4	-1,086.8	2,258.5	0.00	0.00	
5,500.0	38.45	202.41	4,534.6	-2,692.9	-1,110.5	2,307.7	0.00	0.00	
5,526.6	38.45	202.41	4,555.4	-2,708.2	-1,116.8	2,320.8	0.00	0.00	Start Drop -3.00
5,600.0	36.25	202.41	4,613.8	-2,749.3	-1,133.8	2,356.1	3.00	-3.00	
5,700.0	33.25	202.41	4,695.9	-2,802.0	-1,155.5	2,401.3	3.00	-3.00	
5,800.0	30.25	202.41	4,780.9	-2,850.7	-1,175.6	2,443.0	3.00	-3.00	
5,900.0	27.25	202.41	4,868.6	-2,895.1	-1,193.9	2,481.1	3.00	-3.00	
6,000.0	24.25	202.41	4,958.7	-2,935.3	-1,210.5	2,515.5	3.00	-3.00	
6,100.0	21.25	202.41	5,050.9	-2,971.0	-1,225.2	2,546.1	3.00	-3.00	
6,200.0	18.25	202.41	5,145.0	-3,002.2	-1,238.1	2,572.9	3.00	-3.00	
6,300.0	15.25	202.41	5,240.7	-3,028.9	-1,249.1	2,595.7	3.00	-3.00	
6,400.0	12.25	202.41	5,337.9	-3,050.8	-1,258.1	2,614.5	3.00	-3.00	
6,500.0	9.25	202.41	5,436.1	-3,068.1	-1,265.2	2,629.3	3.00	-3.00	
6,600.0	6.25	202.41	5,535.2	-3,080.5	-1,270.4	2,640.0	3.00	-3.00	
6,700.0	3.25	202.41	5,634.8	-3,088.2	-1,273.5	2,646.5	3.00	-3.00	
6,768.2	1.20	202.41	5,703.0	-3,090.6	-1,274.5	2,648.6	3.00	-3.00	WF
6,800.0	0.25	202.41	5,734.8	-3,091.0	-1,274.7	2,648.9	3.00	-3.00	
6,808.2	0.00	0.00	5,743.0	-3,091.0	-1,274.7	2,649.0	3.00	-3.00	EOD; Inc=0° - TOG - EF01A-32 G29 595 TOG
6,900.0	0.00	0.00	5,834.8	-3,091.0	-1,274.7	2,649.0	0.00	0.00	
7,000.0	0.00	0.00	5,934.8	-3,091.0	-1,274.7	2,649.0	0.00	0.00	
7,100.0	0.00	0.00	6,034.8	-3,091.0	-1,274.7	2,649.0	0.00	0.00	
7,200.0	0.00	0.00	6,134.8	-3,091.0	-1,274.7	2,649.0	0.00	0.00	
7,300.0	0.00	0.00	6,234.8	-3,091.0	-1,274.7	2,649.0	0.00	0.00	
7,400.0	0.00	0.00	6,334.8	-3,091.0	-1,274.7	2,649.0	0.00	0.00	
7,500.0	0.00	0.00	6,434.8	-3,091.0	-1,274.7	2,649.0	0.00	0.00	
7,600.0	0.00	0.00	6,534.8	-3,091.0	-1,274.7	2,649.0	0.00	0.00	
7,700.0	0.00	0.00	6,634.8	-3,091.0	-1,274.7	2,649.0	0.00	0.00	
7,800.0	0.00	0.00	6,734.8	-3,091.0	-1,274.7	2,649.0	0.00	0.00	
7,900.0	0.00	0.00	6,834.8	-3,091.0	-1,274.7	2,649.0	0.00	0.00	
8,000.0	0.00	0.00	6,934.8	-3,091.0	-1,274.7	2,649.0	0.00	0.00	
8,100.0	0.00	0.00	7,034.8	-3,091.0	-1,274.7	2,649.0	0.00	0.00	
8,200.0	0.00	0.00	7,134.8	-3,091.0	-1,274.7	2,649.0	0.00	0.00	
8,300.0	0.00	0.00	7,234.8	-3,091.0	-1,274.7	2,649.0	0.00	0.00	
8,400.0	0.00	0.00	7,334.8	-3,091.0	-1,274.7	2,649.0	0.00	0.00	
8,500.0	0.00	0.00	7,434.8	-3,091.0	-1,274.7	2,649.0	0.00	0.00	
8,600.0	0.00	0.00	7,534.8	-3,091.0	-1,274.7	2,649.0	0.00	0.00	
8,700.0	0.00	0.00	7,634.8	-3,091.0	-1,274.7	2,649.0	0.00	0.00	
8,800.0	0.00	0.00	7,734.8	-3,091.0	-1,274.7	2,649.0	0.00	0.00	
8,900.0	0.00	0.00	7,834.8	-3,091.0	-1,274.7	2,649.0	0.00	0.00	
9,000.0	0.00	0.00	7,934.8	-3,091.0	-1,274.7	2,649.0	0.00	0.00	
9,100.0	0.00	0.00	8,034.8	-3,091.0	-1,274.7	2,649.0	0.00	0.00	
9,200.0	0.00	0.00	8,134.8	-3,091.0	-1,274.7	2,649.0	0.00	0.00	
9,300.0	0.00	0.00	8,234.8	-3,091.0	-1,274.7	2,649.0	0.00	0.00	
9,400.0	0.00	0.00	8,334.8	-3,091.0	-1,274.7	2,649.0	0.00	0.00	
9,500.0	0.00	0.00	8,434.8	-3,091.0	-1,274.7	2,649.0	0.00	0.00	
9,600.0	0.00	0.00	8,534.8	-3,091.0	-1,274.7	2,649.0	0.00	0.00	
9,700.0	0.00	0.00	8,634.8	-3,091.0	-1,274.7	2,649.0	0.00	0.00	
9,800.0	0.00	0.00	8,734.8	-3,091.0	-1,274.7	2,649.0	0.00	0.00	
9,900.0	0.00	0.00	8,834.8	-3,091.0	-1,274.7	2,649.0	0.00	0.00	

Cathedral Energy Services

Planning Report

Database:	EDM 5000.1 US Multi Users DB	Local Co-ordinate Reference:	Well EF01A-32 G29 595
Company:	EnCana Oil & Gas (USA) Inc	TVD Reference:	KBE @ 6118.0ft (Original Well Elev)
Project:	North Piceance	MD Reference:	KBE @ 6118.0ft (Original Well Elev)
Site:	G29 595	North Reference:	True
Well:	EF01A-32 G29 595	Survey Calculation Method:	Minimum Curvature
Wellbore:	DD		
Design:	Plan #2		

Planned Survey

Measured Depth (ft)	Inclination (°)	Azimuth (°)	Vertical Depth (ft)	+N/-S (ft)	+E/-W (ft)	Vertical Section (ft)	Dogleg Rate (°/100ft)	Build Rate (°/100ft)	Comments / Formations
10,000.0	0.00	0.00	8,934.8	-3,091.0	-1,274.7	2,649.0	0.00	0.00	
10,100.0	0.00	0.00	9,034.8	-3,091.0	-1,274.7	2,649.0	0.00	0.00	
10,200.0	0.00	0.00	9,134.8	-3,091.0	-1,274.7	2,649.0	0.00	0.00	
10,300.0	0.00	0.00	9,234.8	-3,091.0	-1,274.7	2,649.0	0.00	0.00	
10,368.2	0.00	0.00	9,303.0	-3,091.0	-1,274.7	2,649.0	0.00	0.00	Rollins
10,400.0	0.00	0.00	9,334.8	-3,091.0	-1,274.7	2,649.0	0.00	0.00	
10,500.0	0.00	0.00	9,434.8	-3,091.0	-1,274.7	2,649.0	0.00	0.00	
10,518.2	0.00	0.00	9,453.0	-3,091.0	-1,274.7	2,649.0	0.00	0.00	Drillers TD @ 10518.2' MD - EF01A-32 G29 595
10,600.0	0.00	0.00	9,534.8	-3,091.0	-1,274.7	2,649.0	0.00	0.00	
10,700.0	0.00	0.00	9,634.8	-3,091.0	-1,274.7	2,649.0	0.00	0.00	
10,800.0	0.00	0.00	9,734.8	-3,091.0	-1,274.7	2,649.0	0.00	0.00	
10,900.0	0.00	0.00	9,834.8	-3,091.0	-1,274.7	2,649.0	0.00	0.00	
11,000.0	0.00	0.00	9,934.8	-3,091.0	-1,274.7	2,649.0	0.00	0.00	
11,100.0	0.00	0.00	10,034.8	-3,091.0	-1,274.7	2,649.0	0.00	0.00	
11,200.0	0.00	0.00	10,134.8	-3,091.0	-1,274.7	2,649.0	0.00	0.00	
11,300.0	0.00	0.00	10,234.8	-3,091.0	-1,274.7	2,649.0	0.00	0.00	
11,400.0	0.00	0.00	10,334.8	-3,091.0	-1,274.7	2,649.0	0.00	0.00	
11,500.0	0.00	0.00	10,434.8	-3,091.0	-1,274.7	2,649.0	0.00	0.00	
11,600.0	0.00	0.00	10,534.8	-3,091.0	-1,274.7	2,649.0	0.00	0.00	
11,700.0	0.00	0.00	10,634.8	-3,091.0	-1,274.7	2,649.0	0.00	0.00	
11,800.0	0.00	0.00	10,734.8	-3,091.0	-1,274.7	2,649.0	0.00	0.00	
11,900.0	0.00	0.00	10,834.8	-3,091.0	-1,274.7	2,649.0	0.00	0.00	
12,000.0	0.00	0.00	10,934.8	-3,091.0	-1,274.7	2,649.0	0.00	0.00	
12,065.2	0.00	0.00	11,000.0	-3,091.0	-1,274.7	2,649.0	0.00	0.00	

Targets

Target Name - hit/miss target - Shape	Dip Angle (°)	Dip Dir. (°)	TVD (ft)	+N/-S (ft)	+E/-W (ft)	Northing (ft)	Easting (ft)	Latitude	Longitude
EF01A-32 G29 595 TOC - plan hits target center - Point	0.00	0.00	5,743.0	-3,091.0	-1,274.7	1,645,510.97	2,273,415.02	39° 34' 38.65 N	108° 4' 41.00 W
EF01A-32 G29 595 BHL - plan misses target center by 2114.1ft at 10518.2ft MD (9453.0 TVD, -3091.0 N, -1274.7 E) - Rectangle (sides W30.0 H50.0 D0.0)	0.00	0.00	9,453.0	-3,091.0	839.4	1,645,451.07	2,275,528.23	39° 34' 38.65 N	108° 4' 14.00 W

Formations

Measured Depth (ft)	Vertical Depth (ft)	Name	Lithology	Dip (°)	Dip Direction (°)
6,768.2	5,703.0	WF		0.00	
6,808.2	5,743.0	TOG		0.00	
10,368.2	9,303.0	Rollins		0.00	

Cathedral Energy Services

Planning Report

Database:	EDM 5000.1 US Multi Users DB	Local Co-ordinate Reference:	Well EF01A-32 G29 595
Company:	EnCana Oil & Gas (USA) Inc	TVD Reference:	KBE @ 6118.0ft (Original Well Elev)
Project:	North Piceance	MD Reference:	KBE @ 6118.0ft (Original Well Elev)
Site:	G29 595	North Reference:	True
Well:	EF01A-32 G29 595	Survey Calculation Method:	Minimum Curvature
Wellbore:	DD		
Design:	Plan #2		

Plan Annotations				
Measured Depth (ft)	Vertical Depth (ft)	Local Coordinates		Comment
		+N/-S (ft)	+E/-W (ft)	
200.0	200.0	0.0	0.0	KOP @ 200'
1,481.7	1,387.6	-382.9	-157.9	EOB; Inc=38.45°
5,526.6	4,555.4	-2,708.2	-1,116.8	Start Drop -3.00
6,808.2	5,743.0	-3,091.0	-1,274.7	EOD; Inc=0°
10,518.2	9,453.0	-3,091.0	-1,274.7	Drillers TD @ 10518.2' MD
12,065.2	11,000.0	-3,091.0	-1,274.7	Permit TD at 12065.2