

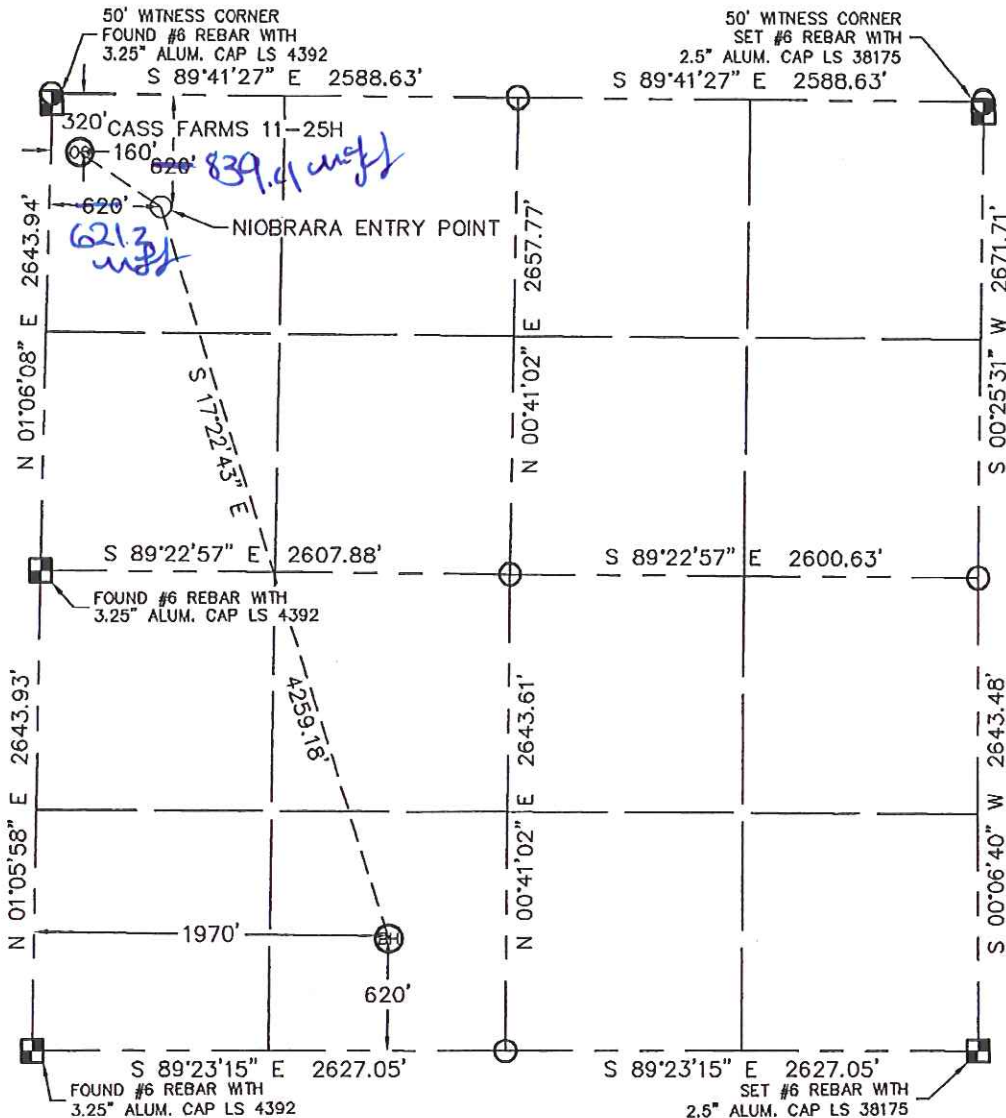


Lat40°, LLC 1635 Foxtrail Drive, Suite 325 Loveland, CO 80538

WELL LOCATION CERTIFICATE

THIS MAP DOES NOT REPRESENT A BOUNDARY SURVEY

SECTION: 25
TOWNSHIP: 8N
RANGE: 62W



In accordance with a request from Jared Rush with Texas American Resources Co., Lat40°, LLC has determined the surface location of the CASS FARMS 11-25H to be 320' from the NORTH line and 160' from the WEST line and the bottom hole to be 620' from the SOUTH line and 1970' from the WEST line as measured at right angles from the section line of Section 25, Township 8 North, Range 62 West of the Sixth Principal Meridian, County of Weld, State of Colorado.

I hereby state that this Well Location Certificate was prepared by me, or under my direct supervision, that the fieldwork was completed on 8-17-10, for and on behalf of Texas American Resources Co. That this is not a Land Survey Plat or an Improvement Survey Plat, and that it is not to be relied upon for establishment of fence, building, or other future Improvement lines.

NOTE:

- 1) Bearings shown are Grid Bearings of the Colorado State Plane Coordinate System, North Zone, North American Datum 1983/2007. The lineal dimensions as contained herein are based upon the "U.S. Survey Foot."
- 2) Ground elevations are based on an observed GPS elevation (NAVD 1988 DATUM).
- 3) IMPROVEMENTS: See LOCATION DRAWING exhibit for all visible improvements within 400' of disturbed area.
- 4) SURFACE USE: CROP DRYLAND
- 5) INSTRUMENT OPERATOR: BRIAN BRINKMAN

SURFACE LOCATION

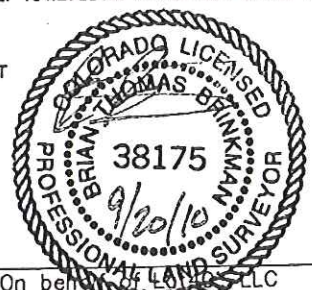
LATITUDE: 40.63893°N
LONGITUDE: 104.27654°W
PDOP: 2.2
ELEV: 5006
1/4, 1/4: NW1/4 NW1/4
NEAREST PROPERTY LINE: 160' WEST

BOTTOM HOLE

LATITUDE: 40.62688°N
LONGITUDE: 104.27054°W
ELEV: 5006

ENTRY POINT

LATITUDE: 40.63809°N
LONGITUDE: 104.27492°W



NOTE

According to Colorado law, you must commence any legal action based upon any defect in this W.L.C. within three years after you discover such defect. In no event, may any action based upon any defect in this survey be commenced more than ten years after the date of the certificate shown hereon. (13-B0-105 C.R.S.)

LEGEND

- = ALIQUOT MONUMENT AS DESCRIBED
- = CALCULATED POSITION

Brian T. Brinkman—On behalf of Lat40°, LLC
Colorado Licensed Professional
Land Surveyor No. 38175 PROJECT#: 2010073