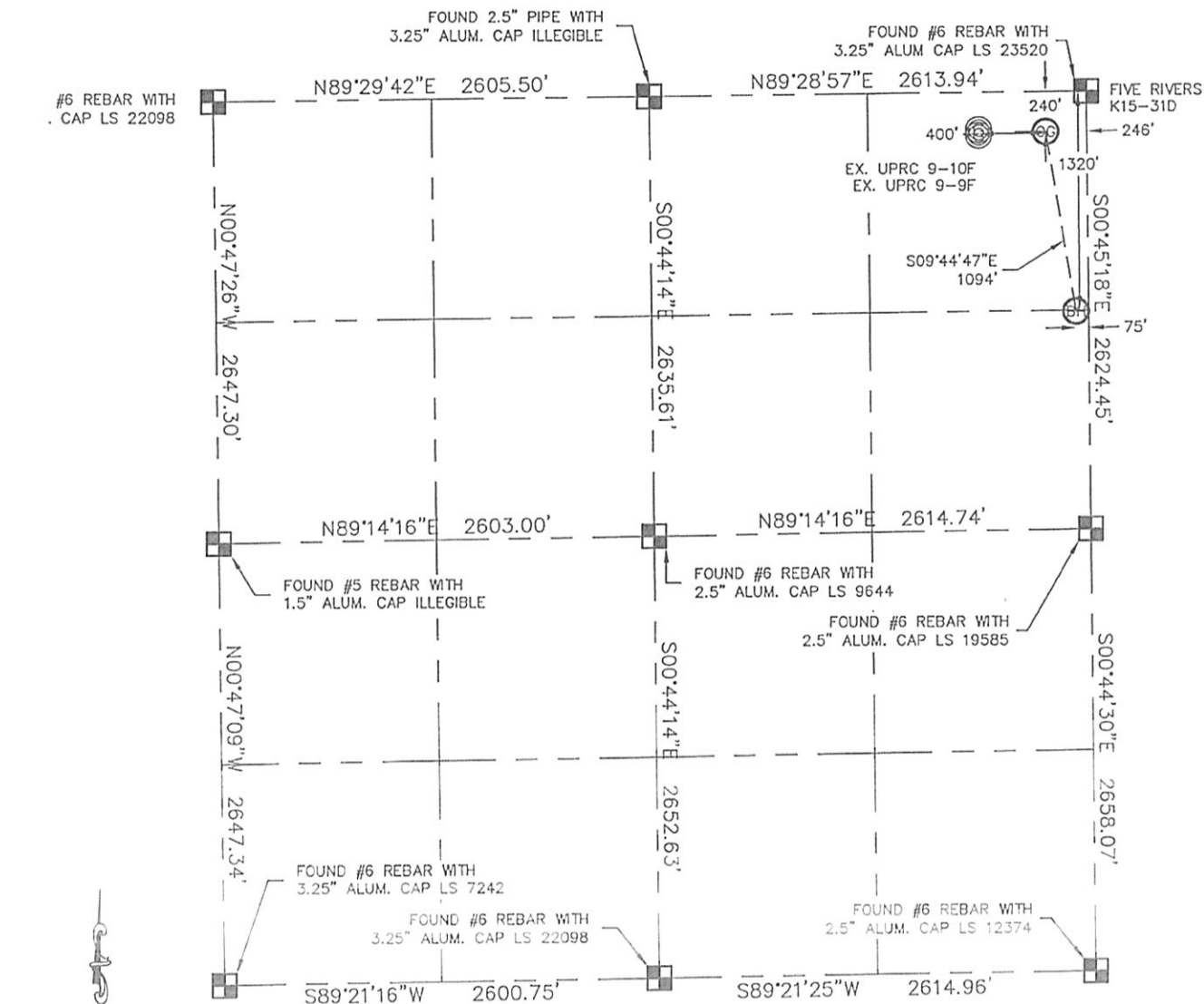


WELL LOCATION CERTIFICATE

THIS MAP DOES NOT REPRESENT A BOUNDARY SURVEY

SECTION: 16
TOWNSHIP: 4N
RANGE: 66W

In accordance with a request from JOE MARTIN with Noble Energy Inc.

King Surveyors Inc. has determined the surface location of the FIVE RIVERS K15-31D to be 240' from the NORTH line and 246' from the EAST line and the bottom hole to be 1320' from the NORTH line and 75' from the EAST line, as measured at right angles, from the section lines of Section 16, Township 4 North, Range 66 West of the Sixth Principal Meridian, County of Weld, State of Colorado.

I hereby state that this Well Location Certificate was prepared by me, or under my direct supervision, that the fieldwork was completed on 5-3-10, for and on behalf of Noble Energy Inc. That this is not a Land Survey Plat or an Improvement Survey Plat, and that it is not to be relied upon for establishment of fence, building, or other future improvement lines.

NOTE:

- 1) Bearings shown are Grid Bearings of the Colorado State Plane Coordinate System, North Zone, North American Datum 1983/2007. The lineal dimensions as contained herein are based upon the "U.S. Survey Foot."
- 2) Ground elevations are based on an observed GPS elevation (NAVD 1988 DATUM).
- 3) NEAREST EXISTING WELL: UPRC 9-9F & UPRC 9-10F BOTH 400' WEST
- 4) IMPROVEMENTS: See VISIBLE IMPROVEMENTS exhibit for all visible improvements within 600' of well head.
- 5) SURFACE USE: CROP FIELD

SURFACE LOCATION
LATITUDE: 40.31827°N
LONGITUDE: 104.77413°W
PDOP: 1.2
ELEV: 4730'
1/4, 1/4: NE1/4NE1/4
NEAREST PROPERTY LINE: 240' NORTH

BOTTOM HOLE
LATITUDE: 40.31530°N
LONGITUDE: 104.77350°W

NOTE

According to Colorado law, you must commence any legal action based upon any defect in this W.L.C. within three years after you discover such defect. In no event, may any action based upon any defect in this survey be commenced more than ten years after the date of the certificate shown hereon. (13-80-105 C.R.S.)

LEGEND

- = ALIQUOT MONUMENT
AS DESCRIBED
- = CALCULATED POSITION

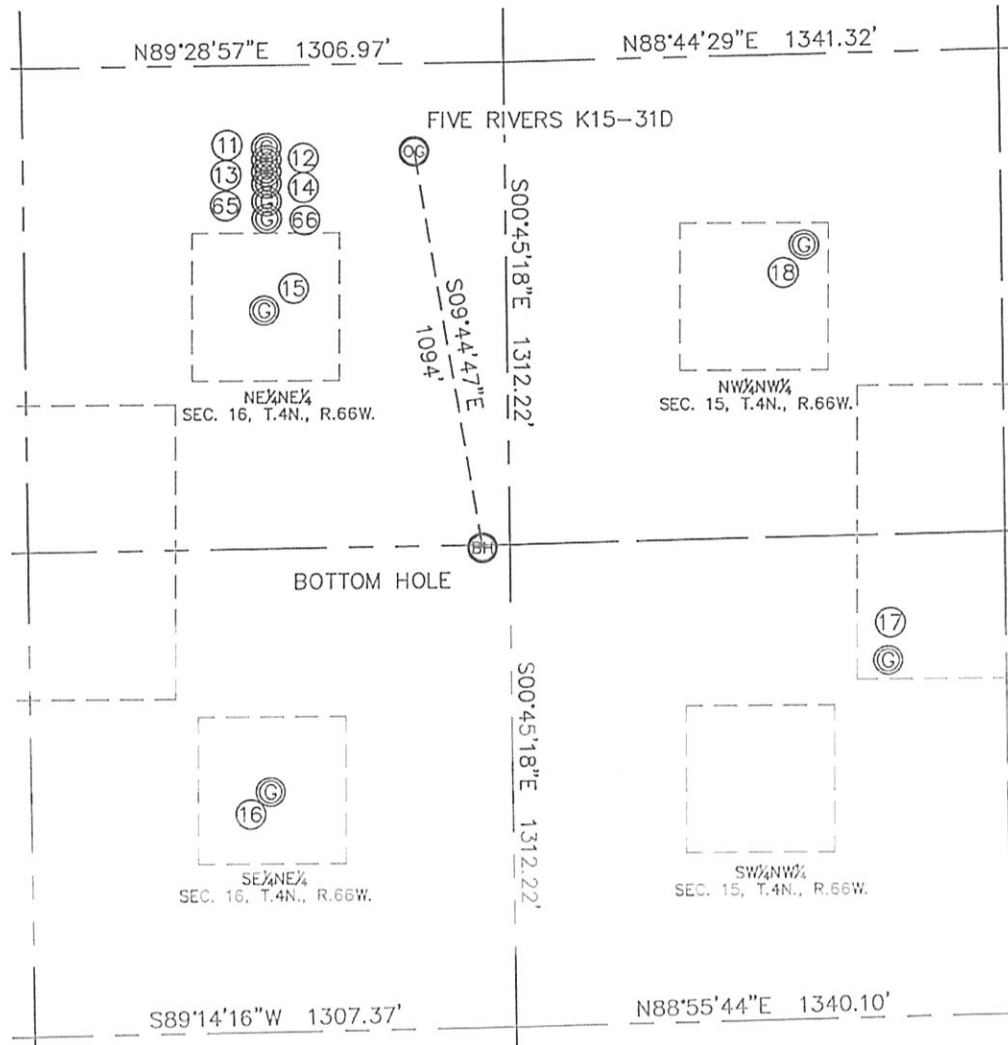
5/11/2010

Michael Chad Duke On behalf of King Surveyors, Inc.
Licensed Land Surveyor No. 58106 State of Colorado

PROJECT#: 2010055

KING SURVEYORS, INC. 650 E. GARDEN DR. WINDSOR, CO 80550
SITE SKETCH

SECTION: 16
 TOWNSHIP: 4N
 RANGE: 66W



⑪

UPRC 9-10F
 NE1/4NE1/4
 225' FNL
 645' FEL
 LAT-40.31831°N
 LONG-104.77556°W
 PDOP: 1.4
 ELEV: 4731'

⑫

UPRC 9-9F
 NE1/4NE1/4
 258' FNL
 645' FEL
 LAT-40.31822°N
 LONG-104.77556°W
 PDOP: 1.4
 ELEV: 4731'

⑬

UPRC 9-15F
 NE1/4NE1/4
 290' FNL
 646' FEL
 LAT-40.31813°N
 LONG-104.77556°W
 PDOP: 1.2
 ELEV: 4731'

⑭

UPRC 9-16F
 NE1/4NE1/4
 322' FNL
 646' FEL
 LAT-40.31804°N
 LONG-104.77556°W
 PDOP: 1.3
 ELEV: 4731'

⑮

MONFORT GILCREST K 16-1
 NE1/4NE1/4
 666' FNL
 657' FEL
 LAT-40.31709°N
 LONG-104.77560°W
 PDOP: 1.2
 ELEV: 4732'

⑯

MONFORT GILCREST K16-8
 SE1/4NE1/4
 1974' FNL
 657' FEL
 LAT-40.31350°N
 LONG-104.77557°W
 PDOP: 1.7
 ELEV: 4736'

⑰

STEPHENS #1
 SW1/4NW1/4
 1656' FNL
 1021' FWL
 LAT-40.31442°N
 LONG-104.76957°W
 PDOP: 1.5
 ELEV: 4736'

⑱

KAWATA 15-22
 NW1/4NW1/4
 520' FNL
 808' FWL
 LAT-40.31753°N
 LONG-104.77035°W
 PDOP: 1.7
 ELEV: 4728'

⑥⑤

FIVE RIVERS K09-23D
 NE1/4NE1/4
 370' FNL
 646' FEL
 LAT-40.31791°N
 LONG-104.77556°W
 PDOP: 1.1
 ELEV: 4732'

⑥⑥

FIVE RIVERS K16-27D
 NE1/4NE1/4
 417' FNL
 646' FEL
 LAT-40.31778°N
 LONG-104.77556°W
 PDOP: 1.1
 ELEV: 4733'

