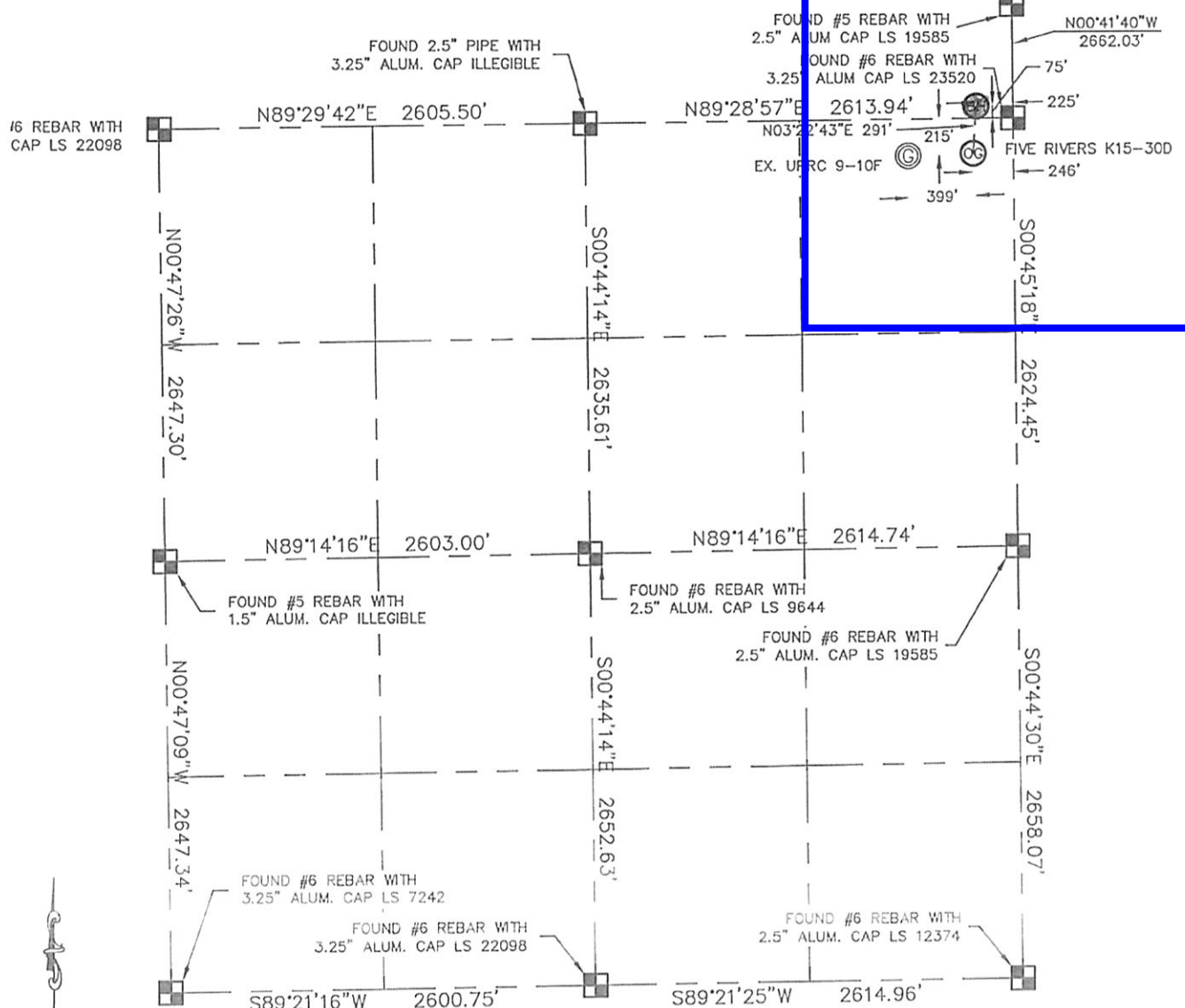


KING SURVEYORS, INC. 650 E. GARDEN DR. WINDSOR, CO 80550

# WELL LOCATION CERTIFICATE

THIS MAP DOES NOT REPRESENT A BOUNDARY SURVEY

SECTION: 16  
TOWNSHIP: 4N  
RANGE: 66W



In accordance with a request from JOE MARTIN with Noble Energy Inc., King Surveyors Inc. has determined the surface location of the FIVE RIVERS K15-30D to be 215' from the NORTH line and 246' from the EAST line of Section 16, and the bottom hole to be 75' from the SOUTH line and 225' from the EAST line, as measured at right angles, from the section line of Section 9, Township 4 North, Range 66 West of the Sixth Principal Meridian, County of Weld, State of Colorado.

I hereby state that this Well Location Certificate was prepared by me, or under my direct supervision, that the fieldwork was completed on 5-3-10, for and on behalf of Noble Energy Inc.. That this is not a Land Survey Plat or an Improvement Survey Plat, and that it is not to be relied upon for establishment of fence, building, or other future improvement lines.

## NOTE:

- 1) Bearings shown are Grid Bearings of the Colorado State Plane Coordinate System, North Zone, North American Datum 1983/2007. The lineal dimensions as contained herein are based upon the "U.S. Survey Foot."
- 2) Ground elevations are based on an observed GPS elevation (NAVD 1988 DATUM).
- 3) NEAREST EXISTING WELL: UPRC 9-10F 399' WEST
- 4) IMPROVEMENTS: See VISIBLE IMPROVEMENTS exhibit for all visible improvements within 600' of well head.
- 5) SURFACE USE: CROP FIELD

SURFACE LOCATION  
LATITUDE: 40.31833°N  
LONGITUDE: 104.77413°W  
PDOP: 1.5  
ELEV: 4730'  
1/4, 1/4: NE1/4NE1/4  
NEAREST PROPERTY LINE: 215' NORTH

BOTTOM HOLE  
LATITUDE: 40.31913°N  
LONGITUDE: 104.77406°W

## NOTE

According to Colorado law, you must commence any legal action based upon any defect in this W.L.C. within three years after you discover such defect. In no event, may any action based upon any defect in this survey be commenced more than ten years after the date of the certificate shown hereon. (13-80-105 C.R.S.)

## LEGEND

- = ALIQUOT MONUMENT AS DESCRIBED
- = CALCULATED POSITION

*Michael Chad Dika*  
Michael Chad Dika on behalf of King Surveyors, Inc.  
Licensed Land Surveyor No. 38106 State of Colorado  
PROJECT#: 2010055  
5/11/2010