

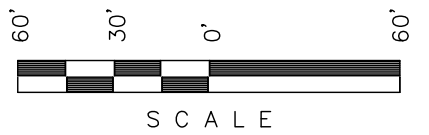
Encana OIL & GAS (USA) INC.

ADDENDUM TO LEGAL PLAT FOR

WELL PAD P27 595

SECTION 27, T5S, R95W, 6th P.M.

SE 1/4 SE 1/4



SCALE

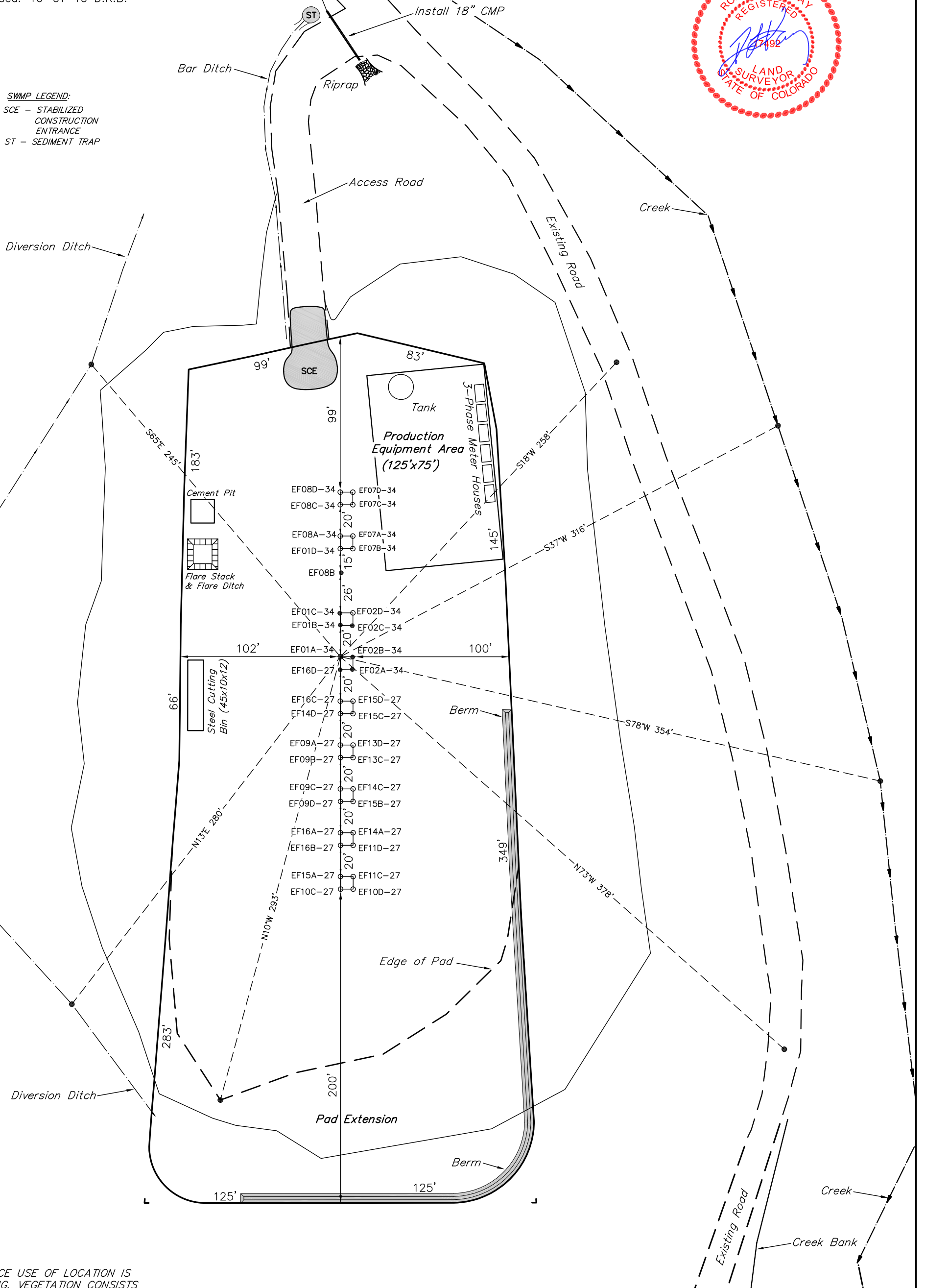
Sheet 1bbb of 10

SCALE: 1" = 60'  
DATE: 08-19-10  
DRAWN BY: D.R.B.  
Revised: 10-01-10 D.R.B.



SWMP LEGEND:

SCE - STABILIZED  
CONSTRUCTION  
ENTRANCE  
ST - SEDIMENT TRAP



SURFACE USE OF LOCATION IS  
GRAZING, VEGETATION CONSISTS  
MAINLY OF SAGEBRUSH &  
NATIVE GRASSES.

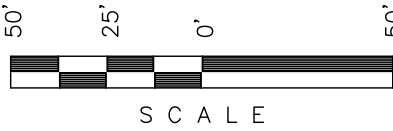
Encana OIL & GAS (USA) INC.

WELL PAD INTERFERENCE PLAT

WELL PAD P27 595

SECTION 27, T5S, R95W, 6th P.M.

SE 1/4 SE 1/4



SCALE

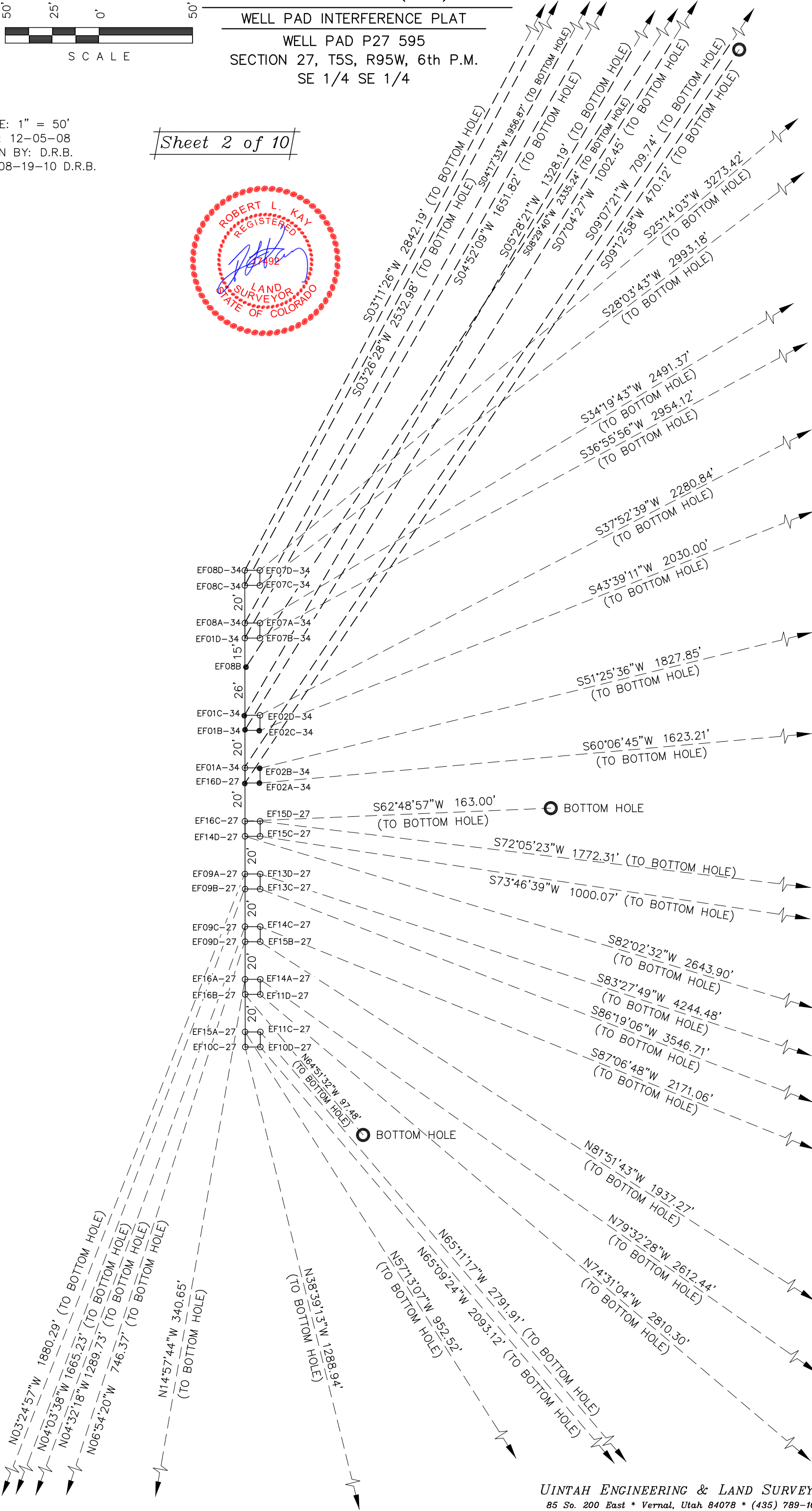
SCALE: 1" = 50'

DATE: 12-05-08

DRAWN BY: D.R.B.

Revised: 08-19-10 D.R.B.

Sheet 2 of 10





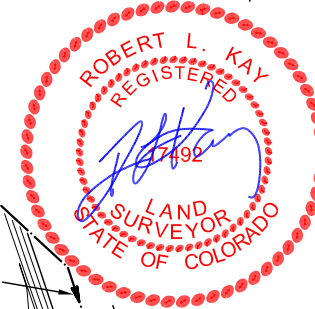
## CONSTRUCTION LAYOUT FOR

WELL PAD P27 595  
SECTION 27, T5S, R95W, 6th P.M.  
SE 1/4 SE 1/4

60' 30' 0' 60'

SCALE

Sheet 3 of 10



SCALE: 1" = 60'  
DATE: 02-02-07  
DRAWN BY: D.R.B.  
Revised: 02-27-07 D.R.B.  
Revised: 04-13-07 D.R.B.  
Revised: 12-05-08 D.R.B.  
Revised: 08-19-10 D.R.B.  
Revised: 10-01-10 D.R.B.

"E"

"E"

NOTE:  
Flare Pit is to  
be located a min.  
of 100' from the  
Well Head.

"D"

"D"

"C"

"C"

"B"

"B"

"A"

"A"

- LEGEND:
- 1 - OVERFLOW
  - 2 - SEWER TANK
  - 3 - LIFT STATION
  - 4 - SEWER LINE
  - 5 - WATER TANK
  - 6 - FREEZER
  - 7 - STORAGE
  - 8 - GENERATOR
  - 9 - FUEL
  - 10 - TRANSFORMER

## SWMP LEGEND:

- ECB - EROSION CONTROL
- BLANKET
- LS - LEVEL SPREADER
- SCE - STABILIZED
- CONSTRUCTION
- ENTRANCE
- SedR - SEDIMENT
- RESERVOIR
- SL - SLASH
- ST - SEDIMENT TRAP
- T - TERRACING
- TB - TOE BERM
- VB - VEGETATED BUFFER
- W - WATTLE
- ECB INFILLED WITH FLEXITERRA

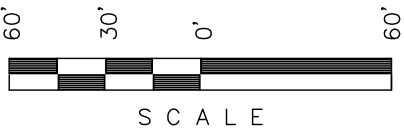
Elev. Ungraded Ground At EF01A-34 Loc. Stake = 6649.0'  
FINISHED GRADE ELEV. AT EF01A-34 LOC. STAKE = 6642.8'

UINTAH ENGINEERING & LAND SURVEYING  
85 So. 200 East \* Vernal, Utah 84078 \* (435) 789-1017

Encana OIL & GAS (USA) INC.

PRE-CONSTRUCTION LAYOUT FOR

WELL PAD P27 595  
SECTION 27, T5S, R95W, 6th P.M.  
SE 1/4 SE 1/4



SCALE

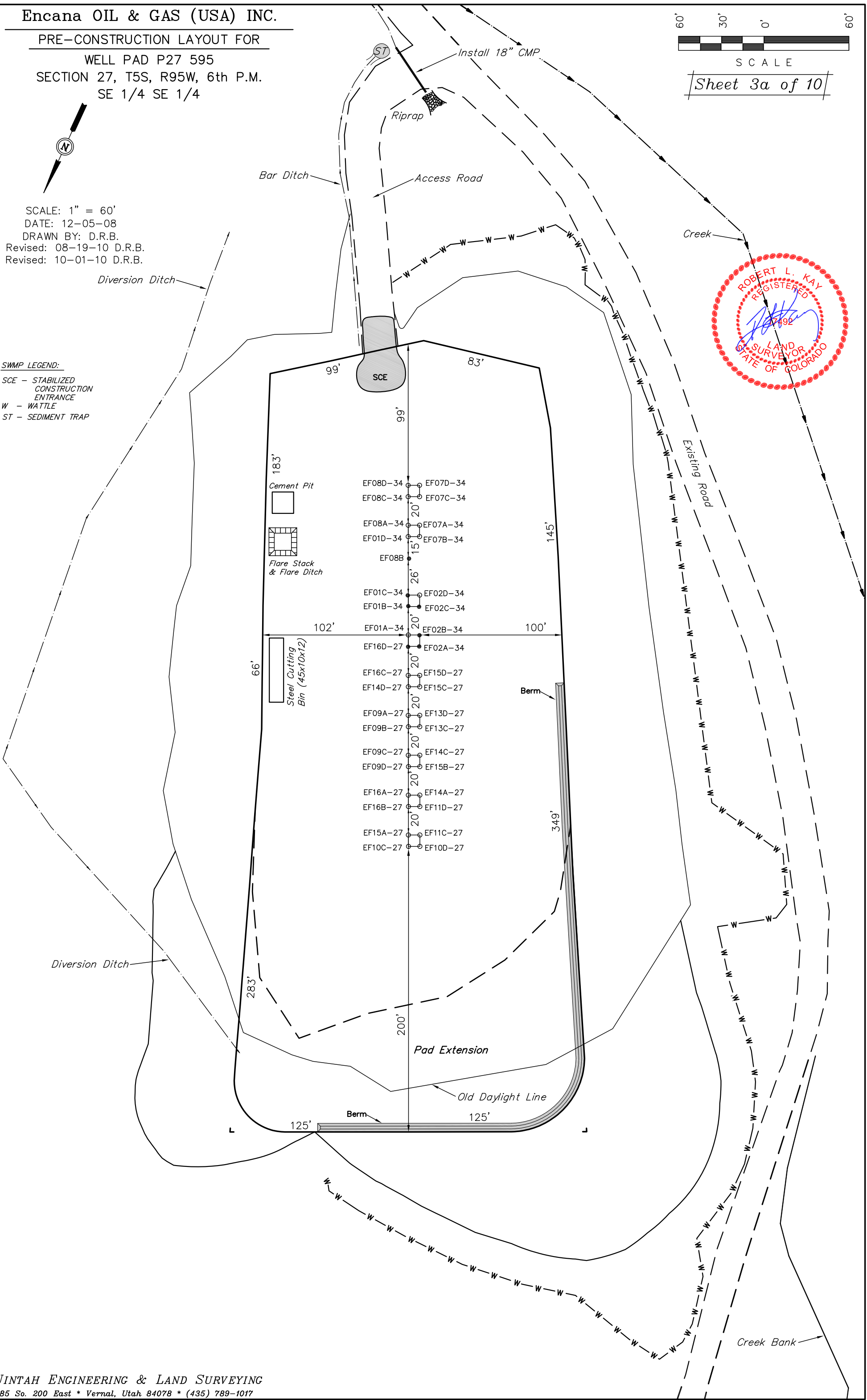
Sheet 3a of 10



SCALE: 1" = 60'  
DATE: 12-05-08  
DRAWN BY: D.R.B.  
Revised: 08-19-10 D.R.B.  
Revised: 10-01-10 D.R.B.

SWAMP LEGEND:

SCE - STABILIZED  
CONSTRUCTION  
ENTRANCE  
W - WATTLE  
ST - SEDIMENT TRAP



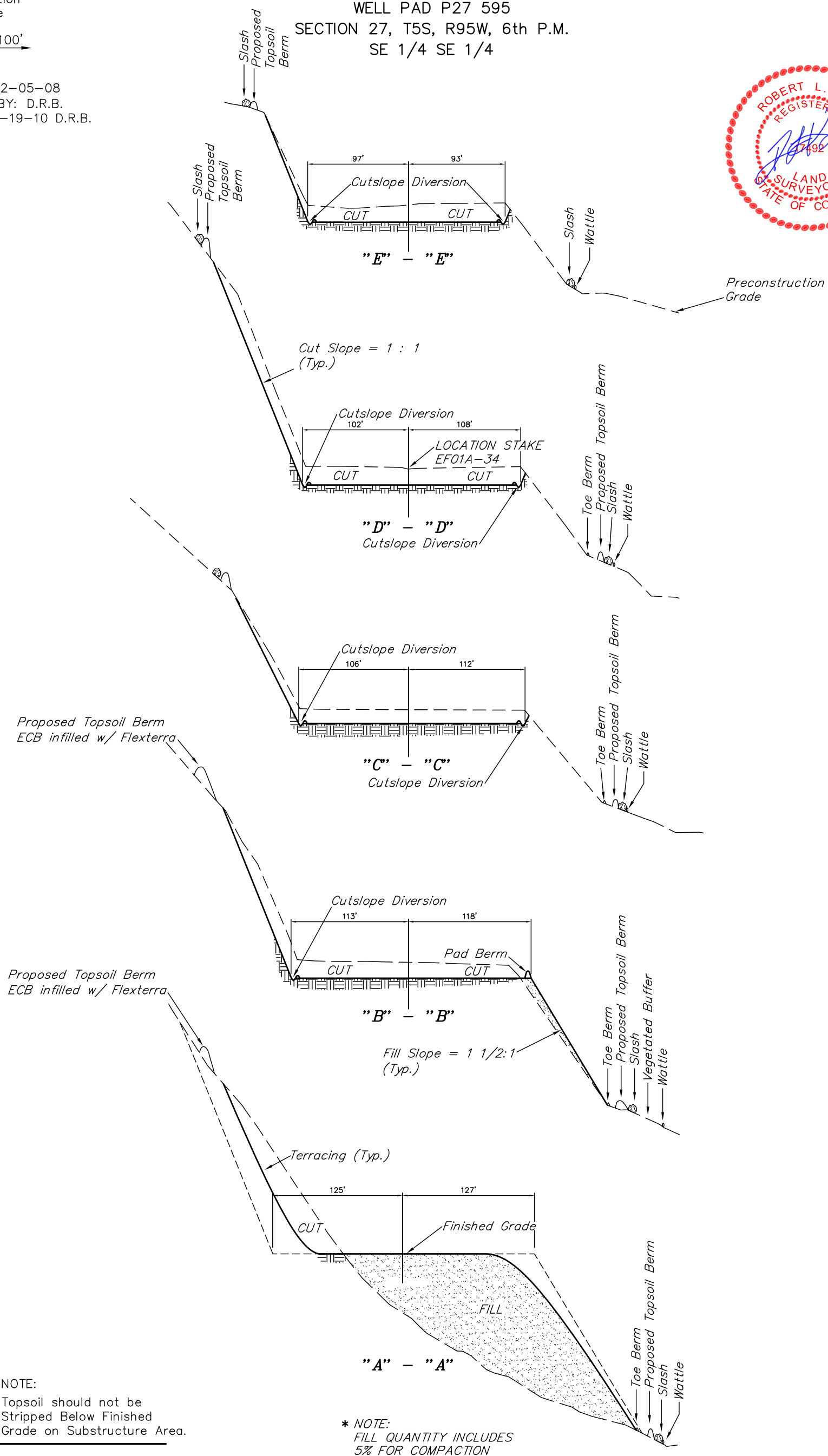


Encana OIL & GAS (USA) INC.  
CONSTRUCTION LAYOUT CROSS SECTION FOR  
WELL PAD P27 595  
SECTION 27, T5S, R95W, 6th P.M.  
SE 1/4 SE 1/4

Sheet 4 of 10

1" = 40'  
X-Section  
Scale  
1" = 100'

DATE: 12-05-08  
DRAWN BY: D.R.B.  
Revised: 08-19-10 D.R.B.



NOTE:  
Topsoil should not be  
Stripped Below Finished  
Grade on Substructure Area.

\* NOTE:  
FILL QUANTITY INCLUDES  
5% FOR COMPACTION

APPROXIMATE YARDAGES

(6") Topsoil Stripping = 3,910 Cu. Yds.  
Remaining Location = 35,270 Cu. Yds.  
TOTAL CUT = 39,180 CU.YDS.  
FILL = 35,270 CU.YDS.

EXCESS MATERIAL = 3,910 Cu. Yds.  
Topsoil = 3,910 Cu. Yds.

EXCESS UNBALANCE = 0 Cu. Yds.  
(After Interim Rehabilitation)

UINTAH ENGINEERING & LAND SURVEYING  
85 So. 200 East \* Vernal, Utah 84078 \* (435) 789-1017

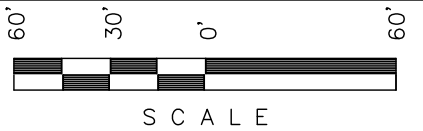
Encana OIL & GAS (USA) INC.

TYPICAL RIG LAYOUT FOR

WELL PAD P27 595

SECTION 27, T5S, R95W, 6th P.M.

SE 1/4 SE 1/4



SCALE

Sheet 5 of 10



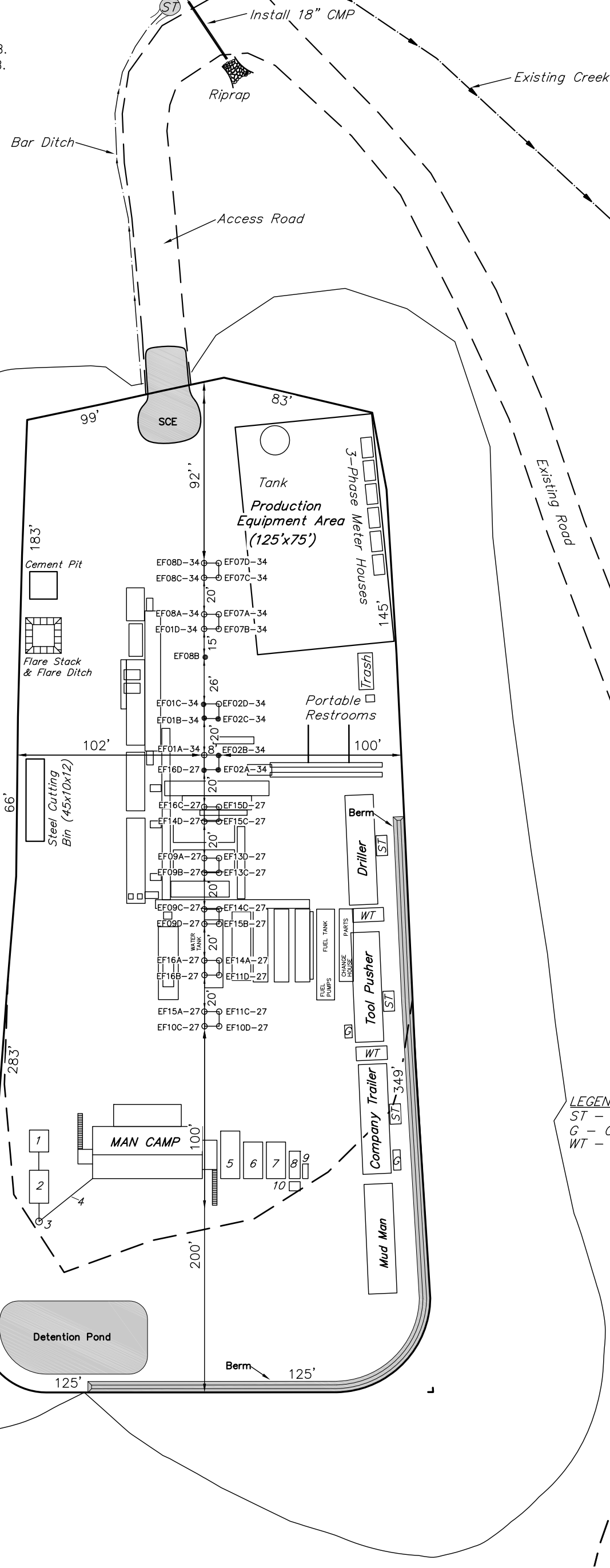
SCALE: 1" = 60'  
DATE: 12-05-08  
DRAWN BY: D.R.B.  
Revised: 08-19-10 D.R.B.  
Revised: 10-01-10 D.R.B.

SWMP LEGEND:

SCE - STABILIZED  
CONSTRUCTION  
ENTRANCE  
ST - SEDIMENT TRAP



NOTE:  
Flare Pit is to  
be located a min.  
of 100' from the  
Well Head.



LEGEND:

ST - Septic Tank  
G - Generator  
WT - Water Tank

LEGEND:

- 1 - OVERFLOW
- 2 - SEWER TANK
- 3 - LIFT STATION
- 4 - SEWER LINE
- 5 - WATER TANK
- 6 - FREEZER
- 7 - STORAGE
- 8 - GENERATOR
- 9 - FUEL
- 10 - TRANSFORMER



Encana OIL & GAS (USA) INC.

PRODUCTION SCHEMATIC FOR

WELL PAD P27 595

SECTION 27, T5S, R95W, 6th P.M.

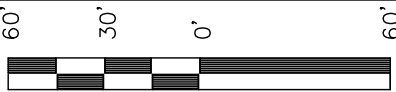
SE 1/4 SE 1/4

SWMP LEGEND:

- SCE - STABILIZED CONSTRUCTION ENTRANCE
- ST - SEDIMENT TRAP
- RV - REVEGATION

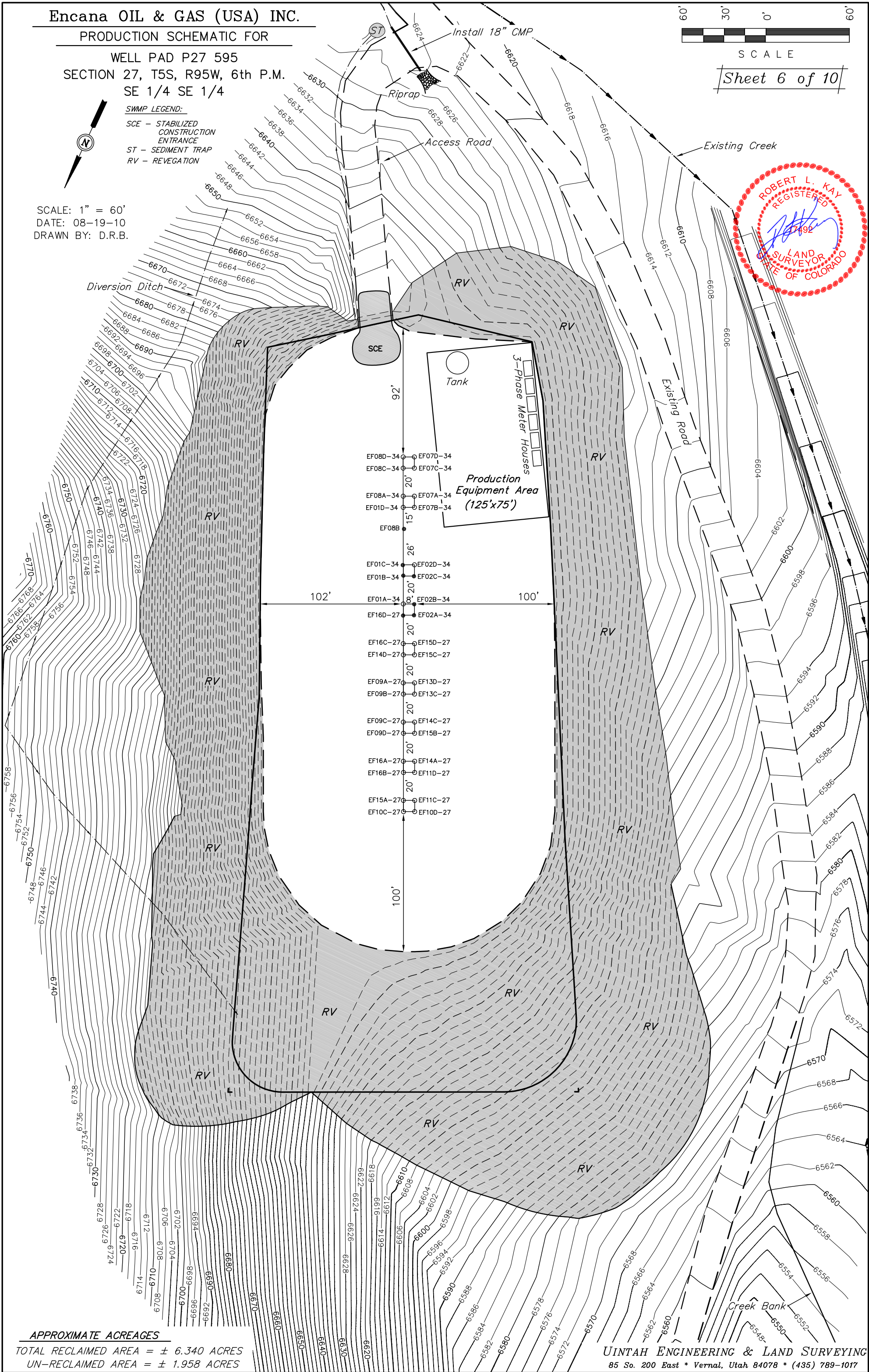


SCALE: 1" = 60'  
DATE: 08-19-10  
DRAWN BY: D.R.B.



SCALE

Sheet 6 of 10



APPROXIMATE ACREAGES

TOTAL RECLAIMED AREA = ± 6.340 ACRES  
UN-RECLAIMED AREA = ± 1.958 ACRES

UINTAH ENGINEERING & LAND SURVEYING  
85 So. 200 East \* Vernal, Utah 84078 \* (435) 789-1017



Encana OIL & GAS (USA) INC.

SURFACE DISTURBANCE AREA FOR

WELL PAD P27 595

SECTION 27, T5S, R95W, 6th P.M.

SE 1/4 SE 1/4

SCALE: 1" = 60'

DATE: 08-19-10

DRAWN BY: D.R.B.

Revised: 10-01-10 D.R.B.

NOTE:  
Flare Pit is to  
be located a min.  
of 100' from the  
Well Head.

NOTE:  
Compact in 6" lifts  
and seed ECB infilled  
with Flexterra.

LEGEND:

- 1 - OVERFLOW  
2 - SEWER TANK  
3 - LIFT STATION  
4 - SEWER LINE  
5 - WATER TANK  
6 - FREEZER  
7 - STORAGE  
8 - GENERATOR  
9 - FUEL  
10 - TRANSFORMER

LINE TABLE			LINE TABLE		
LINE	BEARING	LENGTH	LINE	BEARING	LENGTH
L1	S61°39'28"E	25.11'	L15	S58°45'50"W	47.27'
L2	N41°38'30"E	41.83'	L16	S67°39'10"W	18.04'
L3	N59°45'59"E	42.59'	L17	S33°04'21"W	46.26'
L4	S88°13'03"E	28.95'	L18	N84°44'54"W	17.12'
L5	S58°44'39"E	44.97'	L19	N53°40'12"W	17.71'
L6	S32°44'31"E	47.53'	L20	N23°12'06"W	19.61'
L7	S13°30'22"W	26.23'	L21	N82°30'35"W	22.17'
L8	S30°01'34"E	41.52'	L22	N29°11'48"W	36.88'
L9	S12°56'36"E	42.13'	L23	N14°17'16"E	16.39'
L10	S31°47'52"E	37.32'	L24	N54°59'31"E	36.02'
L11	S18°10'59"E	57.58'	L25	N08°26'21"W	31.26'
L12	S06°19'09"E	28.88'	L26	N31°50'51"W	23.66'
L13	S05°48'52"W	25.46'	L27	N10°38'43"W	46.89'
L14	S22°00'20"W	51.96'	L28	N28°45'26"E	29.94'

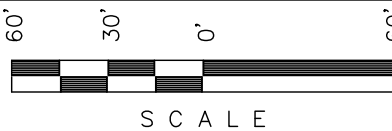
APPROXIMATE ACREAGES

APPROX. WELL DISTURBANCE = ± 6.340 ACRES  
ACCESS ROAD DISTURBANCE = ± 0.156 ACRES

TOTAL = ± 6.496 ACRES

UINTAH ENGINEERING & LAND SURVEYING

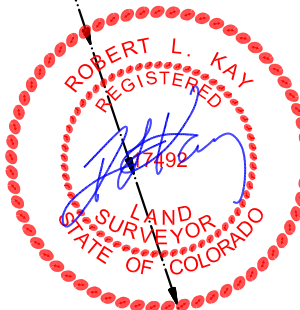
85 So. 200 East \* Vernal, Utah 84078 \* (435) 789-1017



Sheet 7 of 10

SWMP LEGEND:

- ECB - EROSION CONTROL  
BLANKET  
LS - LEVEL SPREADER  
SCE - STABILIZED  
CONSTRUCTION  
ENTRANCE  
SedR - SEDIMENT  
RESERVOIR  
SL - SLASH  
ST - SEDIMENT TRAP  
T - TERRACING  
TB - TOE BERM  
VB - VEGETATED BUFFER  
W - WATTLE  
ECB INFILLED  
WITH FLEX TERRA



LEGEND:

- ST - Septic Tank  
G - Generator  
WT - Water Tank