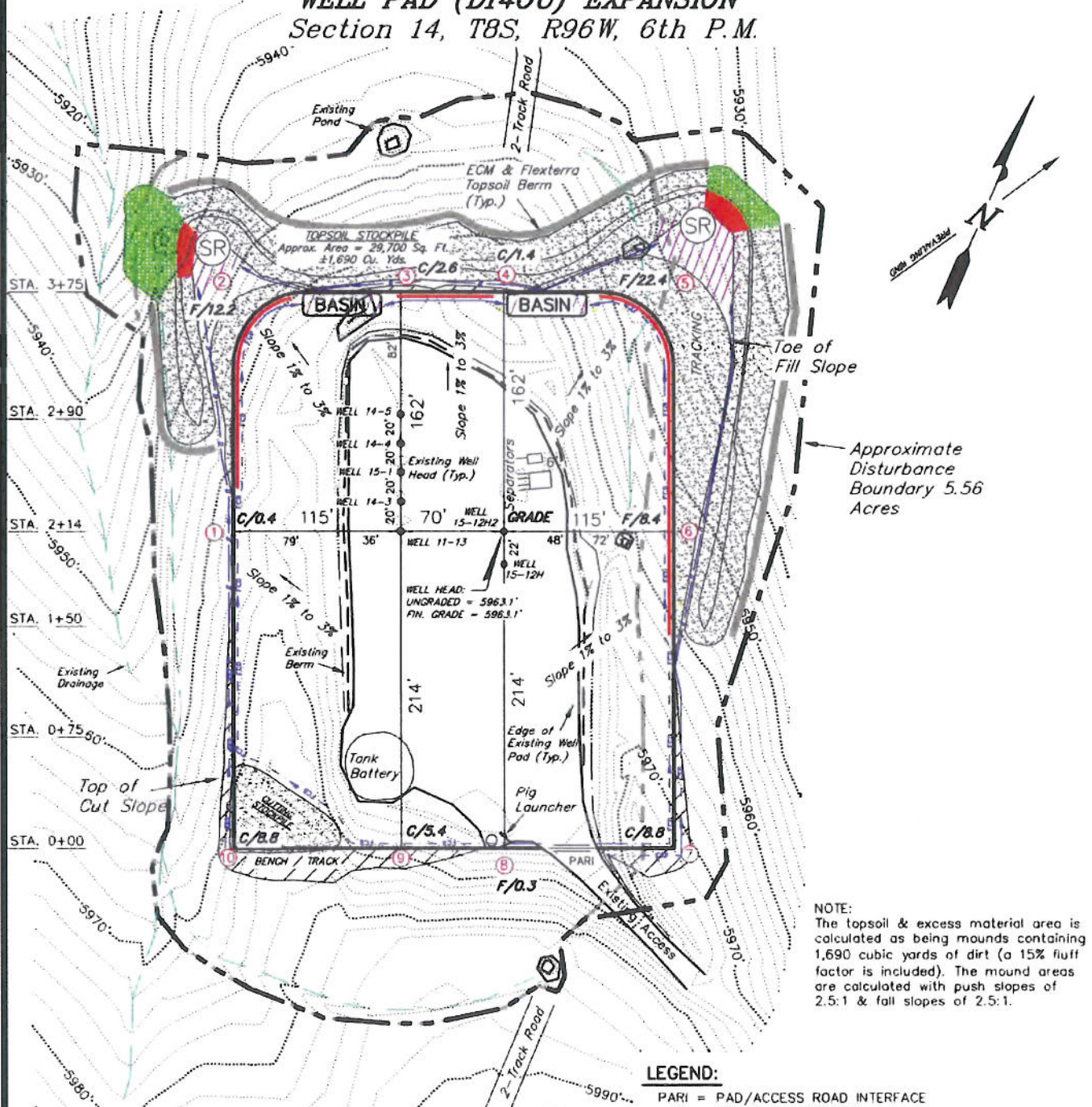


ENCANA OIL & GAS (USA) INC

CONSTRUCTION LAYOUT DRAWING CUT SHEET

WELL PAD (D140U) EXPANSION Section 14, T8S, R96W, 6th P.M.



NOTE:
The topsoil & excess material area is calculated as being mounds containing 1,690 cubic yards of dirt (a 15% fluff factor is included). The mound areas are calculated with push slopes of 2.5:1 & fill slopes of 2.5:1.

- NOTES:
- (1) Slope Track and/or Terrace All Slopes and Piles
 - (2) Erosion Control & Seed Topsoil Stockpile
 - (3) Erosion Control & Seed Outside Slopes of Stockpiles
 - (4) Slope away from Substructure Areas 1% to 3% to Flow Control Ditch on Entire Pad
 - (5) When Possible the Cut and Fill Slopes Directly Behind the Proposed Production Equipment Should be Reclaimed with 3:1 Slopes and Topsoil Spread During Pad Construction.
 - (6) BMP Selection and Position may Change Depending on Actual Conditions Encountered During the Construction Process.
 - (7) All BMP's Shall have Inlet and Outlet Protection.
 - (8) All BMP's to be constructed to Encana Oil & Gas (USA) Inc. BMP Manual's Specifications

LEGEND:

- PARI = PAD/ACCESS ROAD INTERFACE
- SR = SEDIMENT RESERVOIR
- ST = SEDIMENT TRAP
- R.O.P. = RUN-ON PROTECTION
- PERIMETER CONTROL (WATTLES)
- CDM = CHECK DAM
- FCD = FLOW CONTROL DITCH
- ECB = EROSION CONTROL BLANKET
- D = FILL DIVERSION TO SEDIMENT TRAP
- CSD = CUT SLOPE DIVERSION (BERM TOE OF CUT SLOPE)
- VGB = VEGETATION BUFFER (UNDISTURBED LAND INSIDE PC)
- SEED, ECB & FLEX
- LEVEL SPREADER

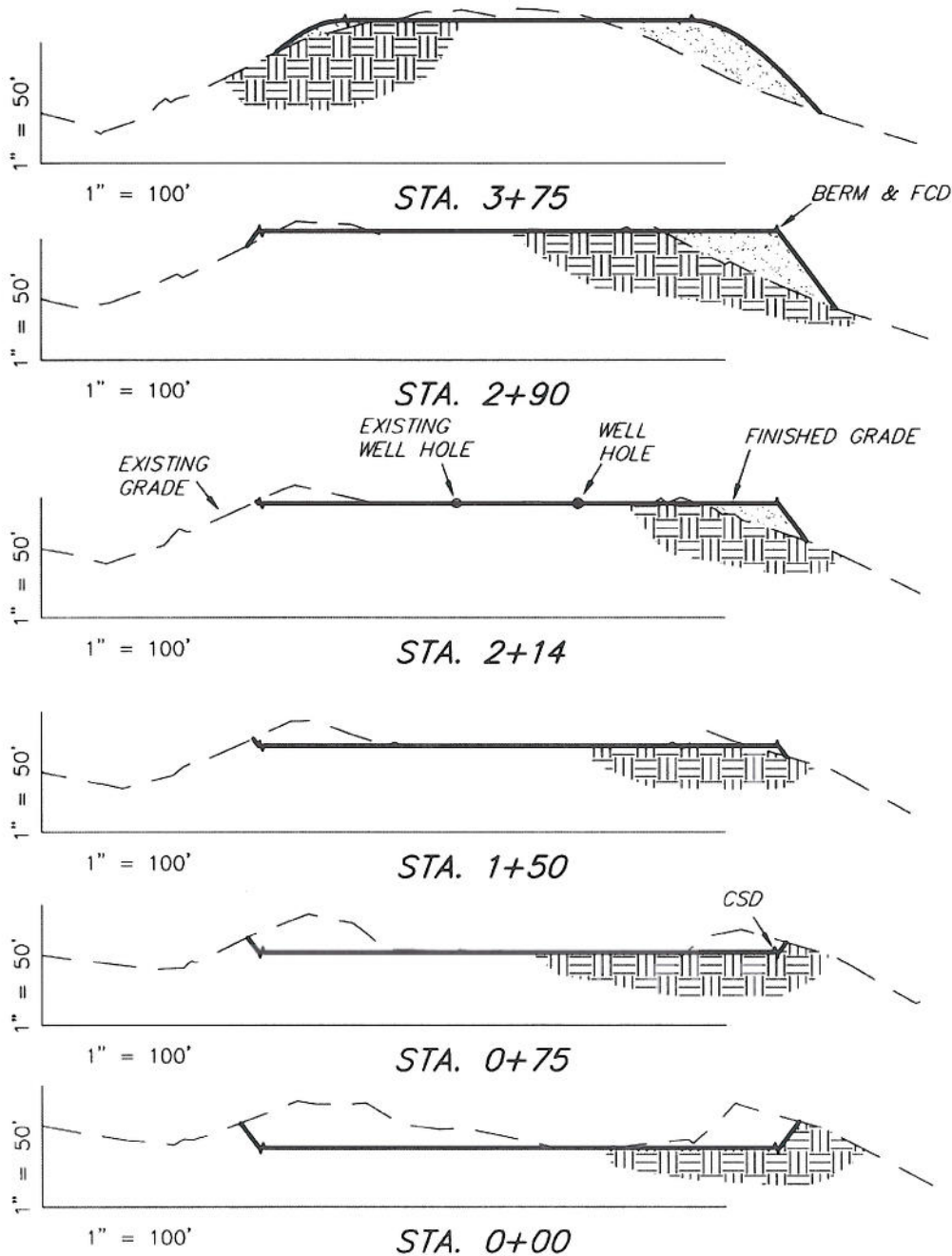
SURVEYED BY: C.D.S.	DATE SURVEYED: 03-25-10
DRAWN BY: F.T.M.	DATE DRAWN: 08-09-10
SCALE: 1" = 100'	REVISED: L.C.S. 09-22-10

Tri State
Land Surveying, Inc.
180 NORTH VERNAL AVE. VERNAL, UTAH 84078
(435) 781-2501

SHEET
4
OF 11

ENCANA OIL & GAS (USA) INC

CONSTRUCTION LAYOUT DRAWING CROSS SECTIONS WELL PAD (D140U) EXPANSION



NOTE:
UNLESS OTHERWISE NOTED
CUT SLOPES ARE AT 1:1
FILL SLOPES ARE AT 1.5:1

ESTIMATED EARTHWORK QUANTITIES (No Shrink or swell adjustments have been used) (Expressed in Cubic Yards)

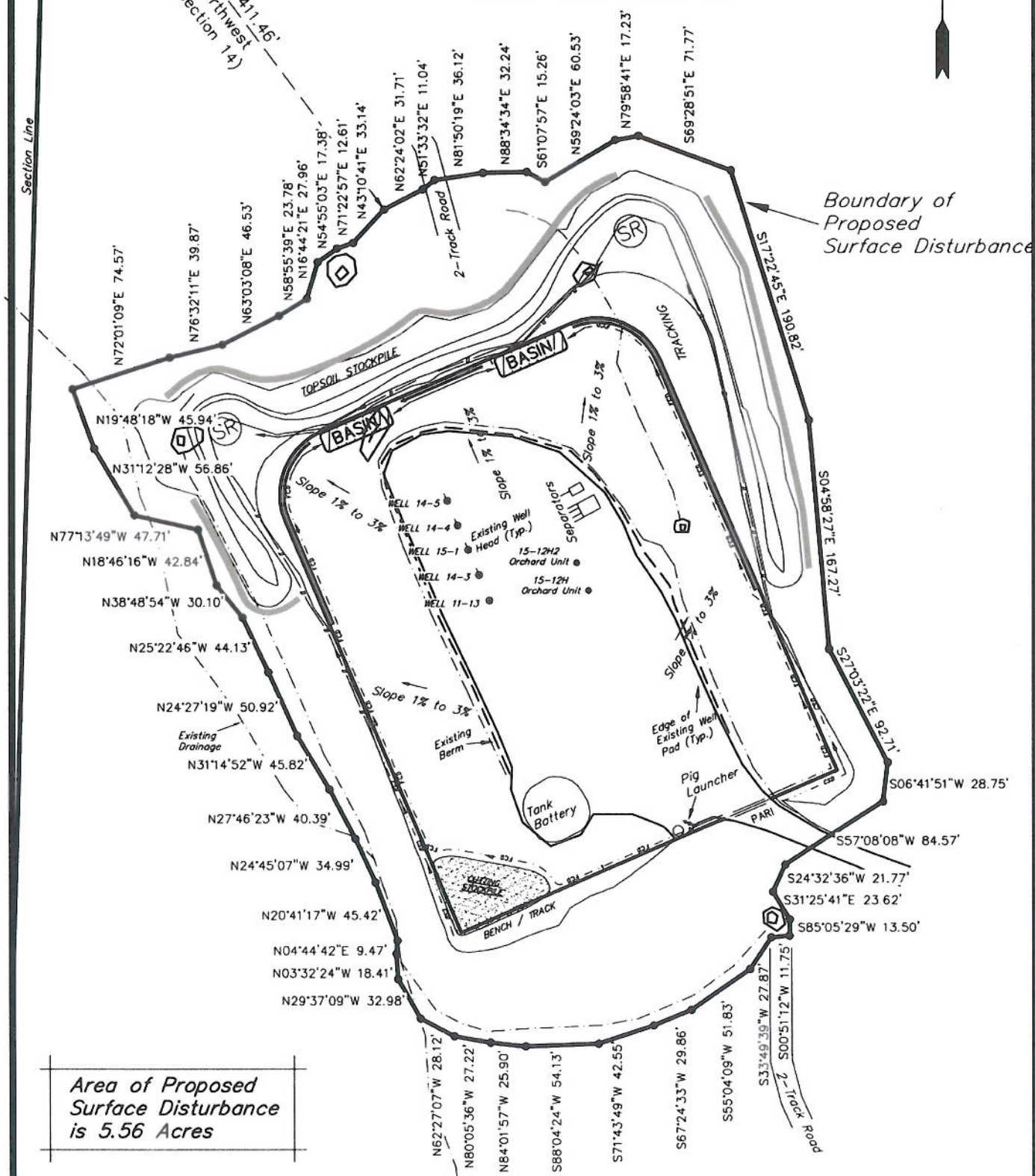
ITEM	CUT	FILL	EXCESS	6" TOPSOIL
PAD	6,260	6,260	0	Topsoil is not included in Pad Cut
TOTALS	6,260	6,260	0	1,470

SURVEYED BY: C.D.S. DATE SURVEYED: 03-25-10
DRAWN BY: F.T.M. DATE DRAWN: 08-09-10
SCALE: 1" = 100' REVISED: L.C.S. 09-22-10

Tri State
Land Surveying, Inc.
180 NORTH VERNAL AVE. VERNAL, UTAH 84078
(435) 781-2501

SHEET
5
OF 11

SURFACE DISTURBANCE AREA
Section 14, T8S, R96W, 6th P.M.
WELL PAD (D140U)



SURVEYED BY: C.D.S.	DATE SURVEYED: 03-25-10
DRAWN BY: L.C.S.	DATE DRAWN: 09-22-10
SCALE: 1" = 100'	REVISED:

Tri State (435) 781-2501
Land Surveying, Inc.
180 NORTH VERNAL AVE VERNAL, UTAH 84078

SHEET
8
OF 11