



Lat40°, LLC

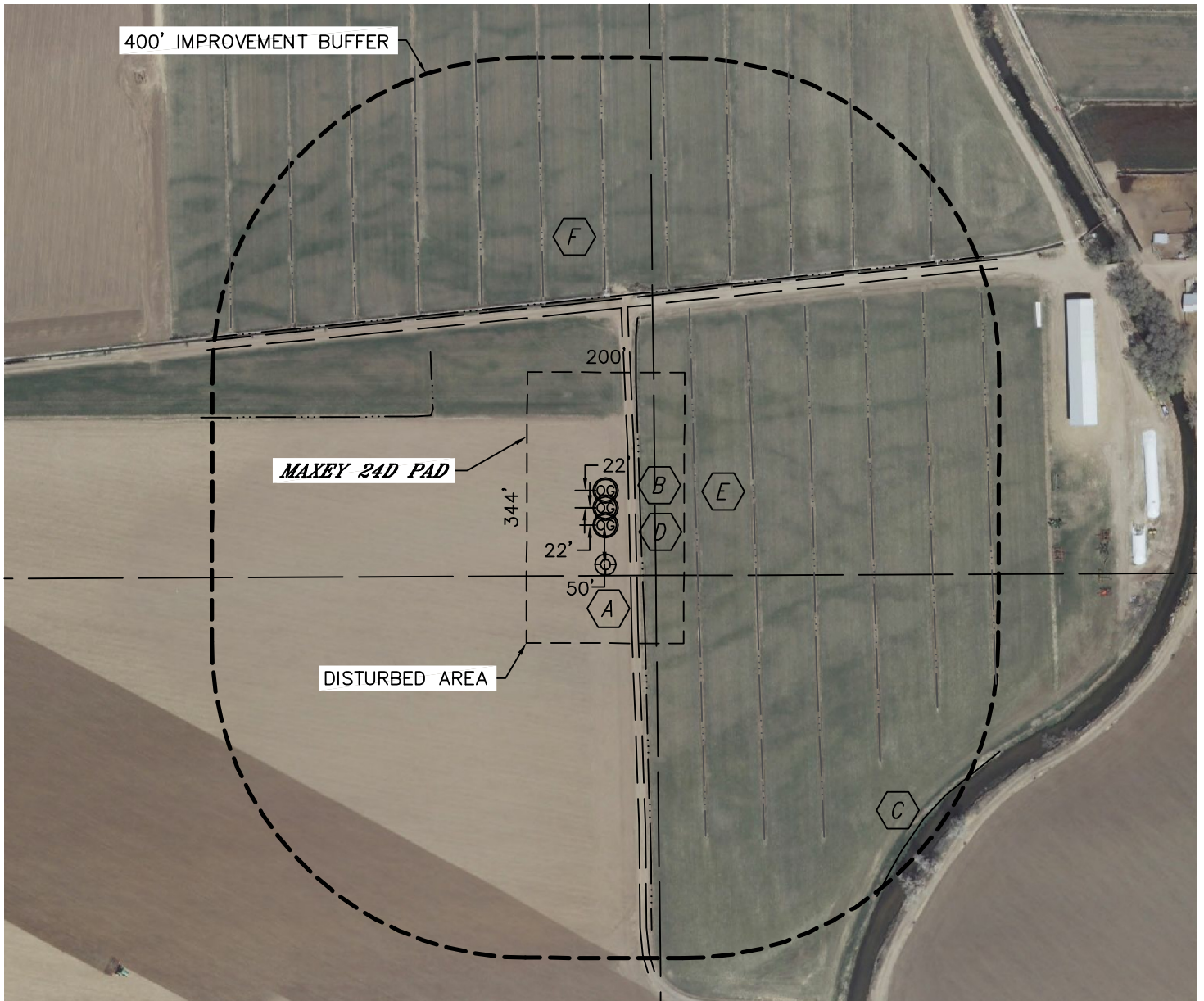
1635 Foxtrail Drive, Suite 325

Loveland, CO 80538

# LOCATION DRAWING

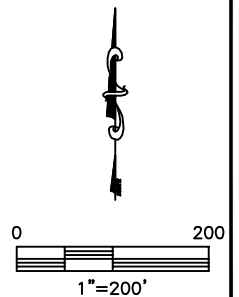
MAXEY 24PD, 24SD, 24XD

SECTION: 24  
TOWNSHIP: 5N  
RANGE: 65W



## IMPROVEMENTS:

- A** MAXEY 24D 72' S
- B** FIELD ROAD 30' E, 250' N
- C** CANAL 565' SE
- D** IRRIGATION DITCH 44' E, 250' NW, 265' N
- E** FIELD DITCH 114' 188', 263', 338', 413', 488' E
- F** FIELD DITCH 528', 462', 402', 344', 303', 280', 278' 294', 334', 383', 441', 525'



NEAREST: BUILDING 600' EAST, PUBLIC ROAD 1370' E,  
OVERHEAD UTILITY 680' NORTHEAST, RAILROAD 1640' SE, PROPERTY LINE 1232' N