

BILL BARRETT CORPORATION E-BILL
DO NOT MAIL-1099 18TH ST,STE 2300W
DENVER, Colorado

GGU FEDERAL
GGU FEDERAL 43C-29-691

PROPETRO/PRO PETRO

Post Job Summary **Cement Surface Casing**

Prepared for: JODI SOUTH
Date Prepared: AUG 30,2010
Version: 1

Service Supervisor: ARNOLD, EDWARD

Submitted by:

HALLIBURTON

The Road to Excellence Starts with Safety

Sold To #: 343492	Ship To #: 2802175	Quote #:	Sales Order #: 7579390
Customer: BILL BARRETT CORPORATION E-BILL	Customer Rep: South, Jodi		
Well Name: GGU FEDERAL	Well #: 43C-29-691	API/UWI #: 05-045-19624	
Field: MAMM CREEK	City (SAP): Silt	County/Parish: Garfield	State: Colorado
Lat: N 39.5 deg. OR N 39 deg. 29 min. 58.798 secs.	Long: W 107.548 deg. OR W -108 deg. 27 min. 8.726 secs.		
Contractor: PROPETRO	Rig/Platform Name/Num: PRO PETRO		
Job Purpose: Cement Surface Casing			
Well Type: Development Well	Job Type: Cement Surface Casing		
Sales Person: METLI, MARSHALL	Srvc Supervisor: ARNOLD, EDWARD	MBU ID Emp #: 439784	

Job Personnel

HES Emp Name	Exp Hrs	Emp #	HES Emp Name	Exp Hrs	Emp #	HES Emp Name	Exp Hrs	Emp #
ARNOLD, EDWARD John	9.5	439784	DUBON, TODD N	9.5	443351	GAMBLE, BENJAMIN T	9.5	446666

Equipment

HES Unit #	Distance-1 way	HES Unit #	Distance-1 way	HES Unit #	Distance-1 way	HES Unit #	Distance-1 way
10722398	120 mile	10951250	120 mile	10973571	120 mile	11139330	120 mile
11542767	120 mile						

Job Hours

Date	On Location Hours	Operating Hours	Date	On Location Hours	Operating Hours	Date	On Location Hours	Operating Hours
8-29-10	8	.5	8-30-10	1.3	1.5			

TOTAL	Total is the sum of each column separately							
-------	--	--	--	--	--	--	--	--

Job

Formation Name	Formation Depth (MD)	Top	Bottom	Form Type	Job depth MD	Job Depth TVD	Water Depth	Perforation Depth (MD)	From	To	Deparated Loc
				BHST	840. ft	840. ft					
							Wk Ht Above Floor			. ft	

Well Data

Description	New / Used	Max pressure psig	Size in	ID in	Weight lbm/ft	Thread	Grade	Top MD ft	Bottom MD ft	Top TVD ft	Bottom TVD ft
OPEN HOLE SECTION				12.375				.	840.		
SURFACE CASING	Unknown		9.625	8.921	36.			.	822.8		

Sales/Rental/3rd Party (HES)

Description	Qty	Qty uom	Depth	Supplier
PLUG,CMTG,TOP,9 5/8,HWE,8.16 MIN/9.06 MA	1	EA		
R/A DENSOMETER W/CHART RECORDER,/JOB,ZI	1	JOB		
PORT. DATA ACQUIS. W/OPTICEM RT W/HES	1	EA		
ADC (AUTO DENSITY CTRL) SYS, /JOB,ZI	1	JOB		

Tools and Accessories

Type	Size	Qty	Make	Depth	Type	Size	Qty	Make	Depth	Type	Size	Qty	Make
Guide Shoe					Packer					Top Plug	9.625	1	HES
Float Shoe					Bridge Plug					Bottom Plug			
Float Collar					Retainer					SSR plug set			
Insert Float										Plug Container	9.625	1	HES
Stage Tool										Centralizers			

Miscellaneous Materials

Gelling Agt	Conc	Surfactant	Conc	Acid Type	Qty	Conc	%
Treatment Fld	Conc	Inhibitor	Conc	Sand Type	Size	Qty	

Fluid Data

Stage/Plug #: 1

Fluid #	Stage Type	Fluid Name	Qty	Qty uom	Mixing Density lbm/gal	Yield ft ³ /sk	Mix Fluid Gal/sk	Rate bbl/min	Total Mix Fluid Gal/sk
1	Water Spacer		20.00	bbl	.	.0	.0	5	
2	Lead Cement	VERSACEM (TM) SYSTEM (452010)	120.0	sacks	12.3	2.38	13.75	5	13.75
	13.75 Gal	FRESH WATER							
3	Tail Cement	SWIFTCEM (TM) SYSTEM (452990)	120.0	sacks	14.2	1.43	6.88	5	6.72
	6.715 Gal	FRESH WATER							
4	Displacement		60.00	bbl	.	.0	.0	5	
Calculated Values			Pressures			Volumes			
Displacement	60.1	Shut In: Instant		Lost Returns		Cement Slurry	81.3	Pad	
Top Of Cement	SURFACE	5 Min		Cement Returns	12	Actual Displacement	60.1	Treatment	
Frac Gradient		15 Min		Spacers	20	Load and Breakdown		Total Job	161.4
Rates									
Circulating		Mixing	5	Displacement	5	Avg. Job			5
Cement Left In Pipe	Amount	44.91 ft	Reason	Shoe Joint					
Frac Ring # 1 @	ID		Frac ring # 2 @	ID		Frac Ring # 3 @	ID		Frac Ring # 4 @
The Information Stated Herein Is Correct				Customer Representative Signature					

The Road to Excellence Starts with Safety

Sold To #: 343492		Ship To #: 2802175		Quote #:		Sales Order #: 7579390	
Customer: BILL BARRETT CORPORATION E-BILL				Customer Rep: South, Jodi			
Well Name: GGU FEDERAL			Well #: 43C-29-691			API/UWI #: 05-045-19624	
Field: MAMM CREEK		City (SAP): Silt		County/Parish: Garfield			State: Colorado
Legal Description:							
Lat: N 39.5 deg. OR N 39 deg. 29 min. 58.798 secs.				Long: W 107.548 deg. OR W -108 deg. 27 min. 8.726 secs.			
Contractor: PROPETRO			Rig/Platform Name/Num: PRO PETRO				
Job Purpose: Cement Surface Casing						Ticket Amount:	
Well Type: Development Well			Job Type: Cement Surface Casing				
Sales Person: METLI, MARSHALL			Srvs Supervisor: ARNOLD, EDWARD			MBU ID Emp #: 439784	

Activity Description	Date/Time	Cht #	Rate bbl/ min	Volume bbl		Pressure psig		Comments
				Stage	Total	Tubing	Casing	
Call Out	08/29/2010 12:00							
Pre-Convoy Safety Meeting	08/29/2010 12:45							Including entire cement crew
Arrive At Loc	08/29/2010 16:00							Rig still drilling.
Assessment Of Location Safety Meeting	08/29/2010 16:05							Water test: PH 7; Hardness 120; So4 <200; Fe 0; KCl 250; Chlorides 0; Temp 68 deg.
Pre-Rig Up Safety Meeting	08/29/2010 23:00							Including entire cement crew
Rig-Up Equipment	08/29/2010 23:10							1 Elite # 1; 1 660 bulk truck; 1 hard line from pump to well head; 1 lines to upright. 9.625" screw in head #B0679
Rig-Up Completed	08/29/2010 23:30							
Pre-Job Safety Meeting	08/29/2010 23:40							Including everyone on location
Start Job	08/29/2010 23:44							TD 840; TP 822.8; SJ 44.91; OH 12.375"; CASING 9.625" 36# J-55.
Other	08/29/2010 23:46		2	2			9.0	Fill lines with fresh water
Pressure Test	08/29/2010 23:49						2520.0	PSI test good, no leaks.
Pump Spacer 1	08/29/2010 23:52		5	20			50.0	20 BBL fresh water.
Pump Lead Cement	08/30/2010 00:01		5	50.8			130.0	120 SKs Lead cement, 12.3 ppg; 2.38 cf3; 13.75 gal/sk.
Activity Description	Date/Time	Cht	Rate bbl/ min	Volume bbl		Pressure psig		Comments

Sold To # : 343492

Ship To # :2802175

Quote # :

Sales Order # :

7579390

SUMMIT Version: 7.20.130

Monday, August 30, 2010 01:02:00

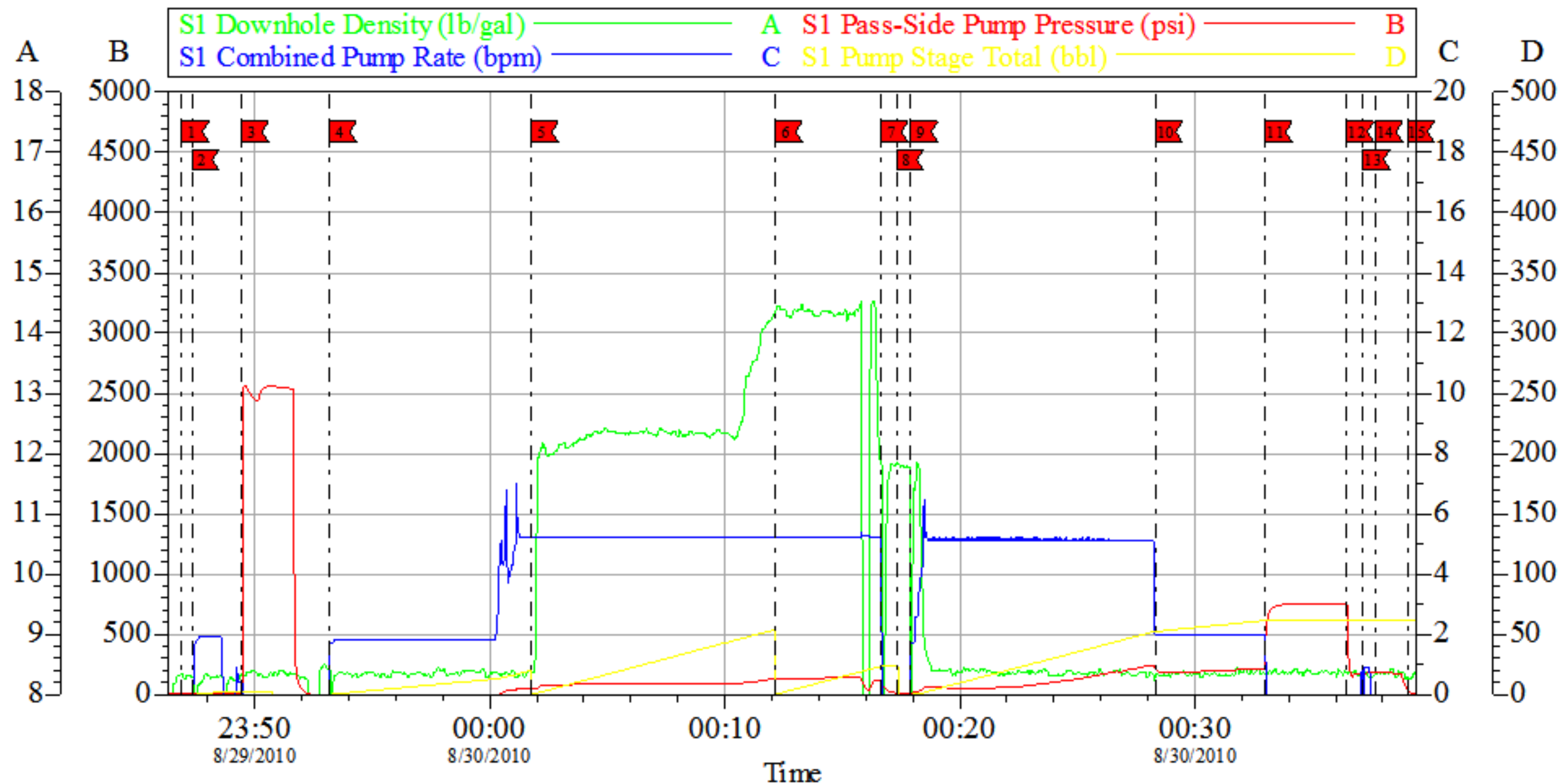
Cementing Job Log

		#		Stage	Total	Tubing	Casing	
Pump Tail Cement	08/30/2010 00:12		5	30.1			140.0	120 SKs Tail cement, 14.2 ppg; 1.43 cf3; 6.88 gal/sk.
Shutdown	08/30/2010 00:17							
Drop Plug	08/30/2010 00:17							Plug left container.
Pump Displacement	08/30/2010 00:18		5	50.1			240.0	Fresh Water Displacement
Slow Rate	08/30/2010 00:28		2	10			204.0	Slow rate last ten BBLs
Bump Plug	08/30/2010 00:33				60.1		730.0	Bumped plug took 500 psi over.
Check Floats	08/30/2010 00:36							Floats did not hold.
Pressure Up	08/30/2010 00:37						200.0	Put 200 PSI on well.
Shut In Well	08/30/2010 00:38						200.0	Shut in well
End Job	08/30/2010 00:39							
Pre-Rig Down Safety Meeting	08/30/2010 00:45							Including entire cement crew.
Standby - Other - see comments	08/30/2010 01:30							Wait on location for next job.
Other	08/30/2010 01:30							Thank You for using Halliburton. Ed Arnold and crew.

BILL BARRETT

9.625" SURFACE

GGU FED 43C-29-691



Local Event Log

1 START JOB	8/29/2010 23:46:54	2 FILL LINES	8/29/2010 23:47:20	3 TEST LINES	8/29/2010 23:49:26
4 PUMP H2O SPACER	8/29/2010 23:53:11	5 PUMP LEAD CEMENT	8/30/2010 00:01:46	6 PUMP TAIL CEMENT	8/30/2010 00:12:09
7 SHUT DOWN	8/30/2010 00:16:39	8 DROP PLUG	8/30/2010 00:17:18	9 PUMP H2O DISPLACEMENT	8/30/2010 00:17:55
10 SLOW RATE	8/30/2010 00:28:19	11 BUMP PLUG	8/30/2010 00:33:00	12 CHECK FLOATS	8/30/2010 00:36:28
13 PRESURE UP	8/30/2010 00:37:10	14 SHUTIN WELL	8/30/2010 00:37:41	15 END JOB	8/30/2010 00:39:02

Customer: BILL BARRETT
Well Description: GGU FED 43C-29-691
Company Rep: JODI SOUTH

Job Date: 29-Aug-2010
Job Type: 9.625" SURFACE
Cement Sup: ED ARNOLD

Sales Order #: 7579390
ADC Used: YES
Elite # 1: TRACY GAMBLE

OptiCem v6.4.8
30-Aug-10 00:47