

---

# **BILL BARRETT CORPORATION E-BILL**

---

**GGU SWANSON 33A-29-691  
MAMM CREEK  
Garfield County , Colorado**

**Cement Surface Casing**  
**26-Aug-2010**

**Post Job Summary**

**The Road to Excellence Starts with Safety**

Sold To #: 343492	Ship To #: 2802137	Quote #:	Sales Order #: 7579374
Customer: BILL BARRETT CORPORATION E-BILL	Customer Rep: South, Jody		
Well Name: GGU SWANSON	Well #: 33A-29-691	API/UWI #: 05-045-19623	
Field: MAMM CREEK	City (SAP): UNKNOWN	County/Parish: Garfield	State: Colorado
Legal Description:			
Lat: N 39.497 deg. OR N 39 deg. 29 min. 47.839 secs.		Long: W 107.576 deg. OR W -108 deg. 25 min. 27.419 secs.	
Contractor: BARRETT	Rig/Platform Name/Num: PETRO PLUS		
Job Purpose: Cement Surface Casing	Ticket Amount:		
Well Type: Development Well	Job Type: Cement Surface Casing		
Sales Person: METLI, MARSHALL	Srvc Supervisor: ARNOLD, EDWARD	MBU ID Emp #: 439784	

Activity Description	Date/Time	Cht #	Rate bbl/ min	Volume bbl		Pressure psig		Comments
				Stage	Total	Tubing	Casing	
Comment	08/25/2010 22:00							Rig still drilling. Crew on location from last job.
Assessment Of Location Safety Meeting	08/25/2010 22:15							Water test: PH 7; Hardness 120; So4 <200; Fe 0; KCl 250; Chlorides 0; Temp 68 deg.
Pre-Rig Up Safety Meeting	08/26/2010 00:00							Including entire cement crew
Rig-Up Equipment	08/26/2010 00:05							1 Elite # 1; 1 660 bulk truck; 1 hard line from pump to well head; 1 lines to upright. 9.625" screw in head #
Rig-Up Completed	08/26/2010 00:45							
Pre-Job Safety Meeting	08/26/2010 01:00							Including everyone on location
Start Job	08/26/2010 01:06							TD 810; TP 790.93; SJ 45; OH 12.375; CASING 9.625" 36# J-55.
Other	08/26/2010 01:07		2	1			.0	Fill lines with fresh water.
Pressure Test	08/26/2010 01:09						2600.0	PSI test good, no leaks.
Pump Spacer 1	08/26/2010 01:12		5	20			.0	20 BBL fresh water.
Pump Lead Cement	08/26/2010 01:19		5	50.8			100.0	120 SKs Lead cement, 12.3 ppg; 2.38 cf3; 13.75 gal/sk.
Pump Tail Cement	08/26/2010 01:30		5	30.5			118.0	120 SKs Tail cement, 14.2 ppg; 1.43 cf3; 6.88 gal/sk.
Shutdown	08/26/2010 01:36							

## Cementing Job Log

Activity Description	Date/Time	Cht #	Rate bbl/ min	Volume bbl		Pressure psig		Comments
				Stage	Total	Tubing	Casing	
Drop Plug	08/26/2010 01:36							Plug left container.
Pump Displacement	08/26/2010 01:37		5	47.7			180.0	Fresh Water Displacement
Slow Rate	08/26/2010 01:47		2	10			188.0	Slow rate last ten BBLs
Bump Plug	08/26/2010 01:52				57.7		1005.0	Bumped plug took 500 psi over.
Check Floats	08/26/2010 01:54							Floats held. 0.5 BBL back.
End Job	08/26/2010 01:56							
Pre-Rig Down Safety Meeting	08/26/2010 02:00							Including entire cement crew.
Standby - Other - see comments	08/26/2010 03:00							Round trip bulk trucks.
Other	08/26/2010 03:00							Thank You for using Halliburton. Ed Arnold and crew.

## The Road to Excellence Starts with Safety

Sold To #: 343492	Ship To #: 2802137	Quote #:	Sales Order #: 7579374
Customer: BILL BARRETT CORPORATION E-BILL	Customer Rep: South, Jody		
Well Name: GGU SWANSON	Well #: 33A-29-691	API/UWI #: 05-045-19623	
Field: MAMM CREEK	City (SAP): UNKNOWN	County/Parish: Garfield	State: Colorado
Lat: N 39.497 deg. OR N 39 deg. 29 min. 47.839 secs.	Long: W 107.576 deg. OR W -108 deg. 25 min. 27.419 secs.		
Contractor: BARRETT	Rig/Platform Name/Num: PETRO PLUS		
Job Purpose: Cement Surface Casing			
Well Type: Development Well	Job Type: Cement Surface Casing		
Sales Person: METLI, MARSHALL	Srvc Supervisor: ARNOLD, EDWARD	MBU ID Emp #: 439784	

## Job Personnel

HES Emp Name	Exp Hrs	Emp #	HES Emp Name	Exp Hrs	Emp #	HES Emp Name	Exp Hrs	Emp #
ARNOLD, EDWARD	18	439784	CALDWELL, JEFFREY	18	369111	GAMBLE, BENJAMIN T	18	446666
HAYES, JESSE Doug	18	403601						

## Equipment

HES Unit #	Distance-1 way	HES Unit #	Distance-1 way	HES Unit #	Distance-1 way	HES Unit #	Distance-1 way
10700193	120 mile	10022007	120 mile	10951250	120 mile	10973571	120 mile
11542767	120 mile						

## Job Hours

Date	On Location Hours	Operating Hours	Date	On Location Hours	Operating Hours	Date	On Location Hours	Operating Hours
8-25-10	16	0	8-26-10	3	1			

TOTAL Total is the sum of each column separately

## Job

Formation Name	Formation Depth (MD) Top	Bottom	Called Out	Date	Time	Time Zone
Form Type		BHST	On Location			
Job depth MD	810. ft	Job Depth TVD	810. ft	Job Started	26 - Aug - 2010	01:04 MST
Water Depth		Wk Ht Above Floor	. ft	Job Completed	26 - Aug - 2010	01:56 MST
Perforation Depth (MD) From		To	Departed Loc	26 - Aug - 2010	03:00	MST

## Well Data

Description	New / Used	Max pressure psig	Size in	ID in	Weight lbm/ft	Thread	Grade	Top MD ft	Bottom MD ft	Top TVD ft	Bottom TVD ft
OPEN HOLE SECTION				12.375					810.		
SURFACE CASING	Unknown		9.625	8.921	36.				790.9		

Sales/Rental/3<sup>rd</sup> Party (HES)

Description	Qty	Qty uom	Depth	Supplier
PLUG,CMTG,TOP,9 5/8,HWE,8.16 MIN/9.06 MA	1	EA		
R/A DENSOMETER W/CHART RECORDER,/JOB,ZI	1	JOB		
PORT. DATA ACQUIS. W/OPTICEM RT W/HES	1	EA		
ADC (AUTO DENSITY CTRL) SYS, /JOB,ZI	1	JOB		

## Tools and Accessories

Type	Size	Qty	Make	Depth	Type	Size	Qty	Make	Depth	Type	Size	Qty	Make
Guide Shoe					Packer					Top Plug	9.625	1	HES
Float Shoe					Bridge Plug					Bottom Plug			
Float Collar					Retainer					SSR plug set			
Insert Float										Plug Container	9.625	1	HES
Stage Tool										Centralizers			

## Miscellaneous Materials

Gelling Agt	Conc	Surfactant	Conc	Acid Type	Qty	Conc	%
-------------	------	------------	------	-----------	-----	------	---

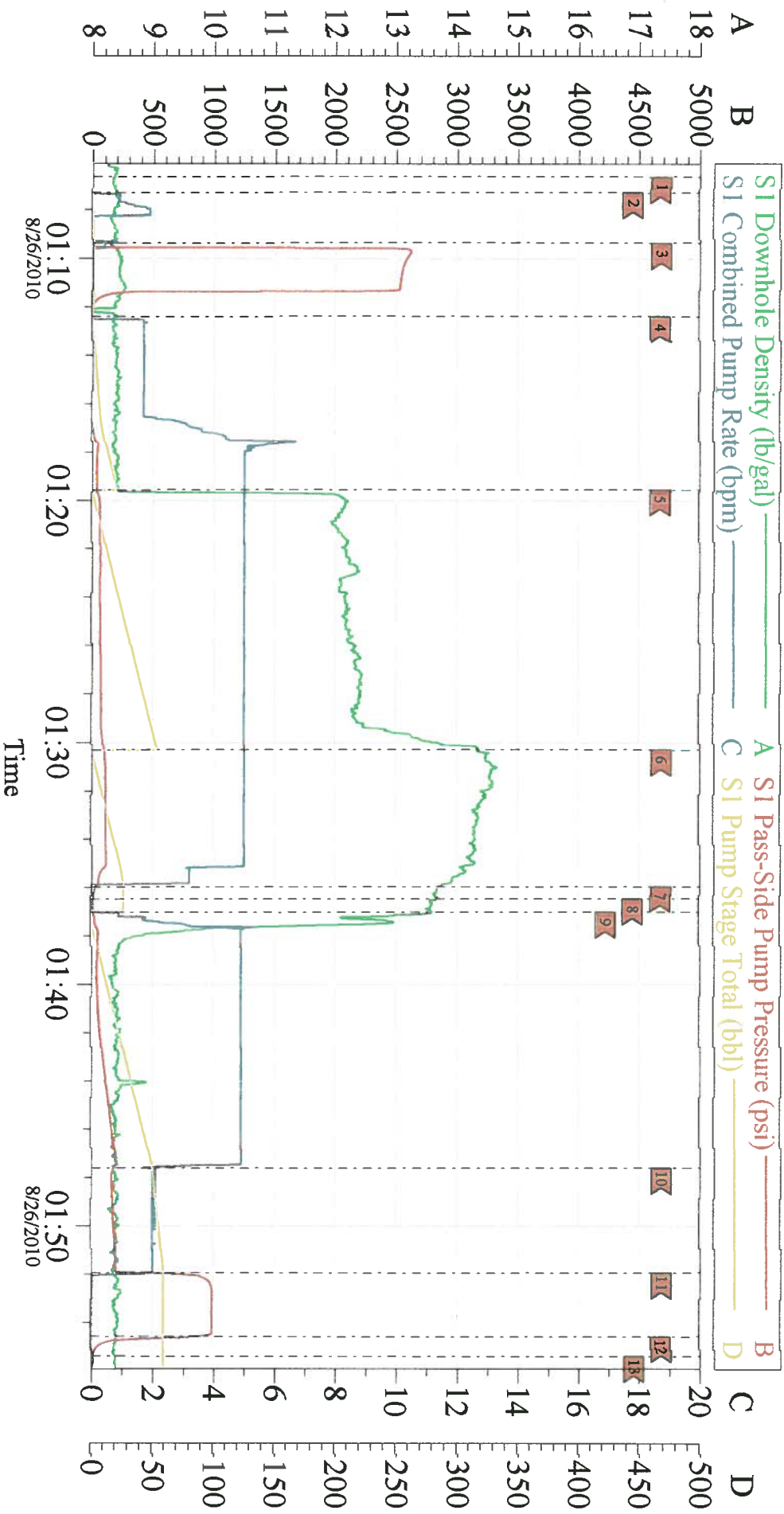
Treatment Fld		Conc		Inhibitor		Conc		Sand Type		Size		Qty	
Fluid Data													
Stage/Plug #: 1													
Fluid #	Stage Type	Fluid Name			Qty	Qty uom	Mixing Density lbm/gal	Yield ft <sup>3</sup> /sk	Mix Fluid Gal/sk	Rate bbl/min	Total Mix Fluid Gal/sk		
1	Water Spacer				20.00	bbl	.	.0	.0	5			
2	Lead Cement	VERSACEM (TM) SYSTEM (452010)			120.0	sacks	12.3	2.38	13.75	5	13.75		
		13.75 Gal FRESH WATER											
3	Tail Cement	SWIFTCM (TM) SYSTEM (452990)			120.0	sacks	14.2	1.43	6.88	5	6.72		
		6.715 Gal FRESH WATER											
4	Displacement				57.00	bbl	.	.0	.0	5			
Calculated Values				Pressures				Volumes					
Displacement	57.7	Shut In: Instant			Lost Returns	0	Cement Slurry	81.3	Pad				
Top Of Cement	SURFACE	5 Min			Cement Returns	17.5	Actual Displacement	57.7	Treatment				
Frac Gradient		15 Min			Spacers	20	Load and Breakdown		Total Job	159			
Rates													
Circulating		Mixing		5	Displacement	5	Avg. Job		5				
Cement Left In Pipe	Amount	45 ft	Reason	Shoe Joint									
Frac Ring # 1 @	ID	Frac ring # 2 @	ID	Frac Ring # 3 @	ID	Frac Ring # 4 @	ID						
The Information Stated Herein Is Correct					Customer Representative Signature								



# BILL BARRETT

## 9.625" SURFACE

### GGU SWANSON 33A-29-691



Customer: BILL BARRETT  
 Well Description: GGU SWANSON 33A-29-691  
 Company Rep: JODI SOUTH

Job Date: 26-Aug-2010  
 Job Type: 9.625 SURFACE  
 Cement Supervisor: ED ARNOLD

Sales Order #: 7579374  
 ADC Used: YES  
 Elite # 1: JESSY HAYES