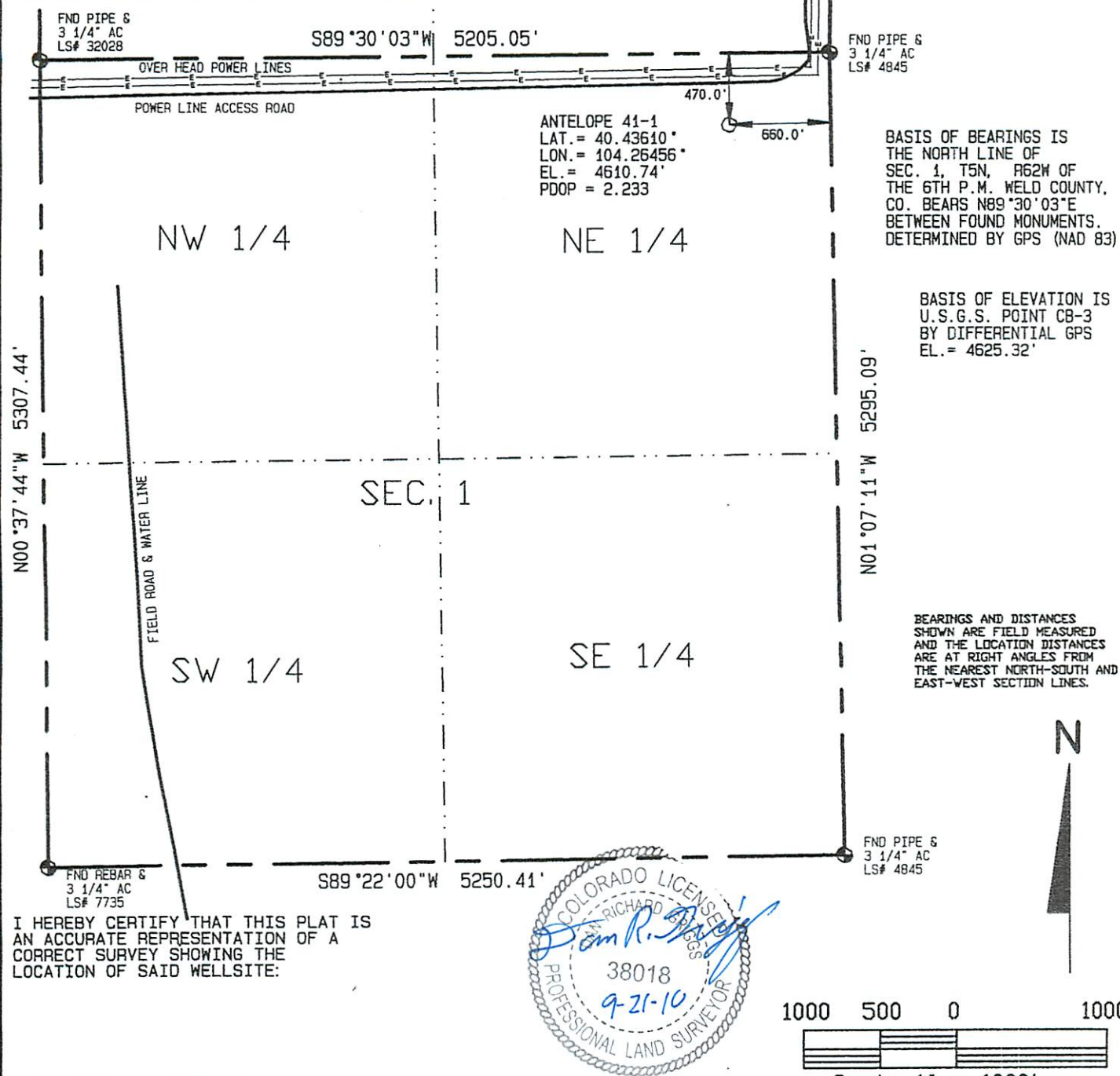


SURFACE HOLE LOCATION ANTELOPE 41-1 (STRAIGHT WELL)
 WELL LAT. LONG. EL. FNL FEL
 41-1 40.43610° 104.26456° 4610.74' 470.0' 660.0'

Visible improvements within 400 feet of the location include:
 High voltage over head powerlines run 320' north of site.
 powerline access road runs 273' north of site.



I HEREBY CERTIFY THAT THIS PLAT IS
 AN ACCURATE REPRESENTATION OF A
 CORRECT SURVEY SHOWING THE
 LOCATION OF SAID WELLSITE:

Dan Griggs PLS# 38018

CONTRACT SURVEYORS, LTD.
 COMPLETE SURVEYING AND GLOBAL POSITIONING

2133 SOUTH BELLAIRE STREET #14
 DENVER COLORADO 80222
 (303) 756-3695



CSL# 10104-62

DATE OF FIELD WORK

SEPTEMBER 13, 2010

DATE OF DRAWING

SEPTEMBER 14, 2010

ANTELOPE 41-1

NE 1/4 NE 1/4 SEC. 1, T5N, R62W

BONANZA CREEK ENERGY OPERATING COMPANY, LLC

WELD COUNTY, COLORADO