

1625 Broadway  
Suite 2000  
Denver, CO 80202  
  
Tel: 303.228.4000  
Fax: 303.228.4280  
www.nobleenergyinc.com



October 1, 2010

Colorado Oil and Gas Conservation Commission  
The Chancery Building  
1120 Lincoln Street, Suite 801  
Denver, CO 80203

Attn: Mr. David Neslin, Director

RE: **DECHANT STATE H36-31D**  
Codell/Niobrara/J Sand New Drill  
Township 3 North, Range 65 West, 6th P.M.  
Section 36: NW/4NW/4: 1054' FNL & 1143' FWL (Surface Location)  
Section 36: NW/4NW/4: 1320' FNL & 75' FWL (Bottom Hole Location)  
Weld County, Colorado

Mr. Neslin:

Noble Energy, Inc. ("NEI") is planning to drill the captioned boundary well in accordance with the provisions of COGCC Rule 318A.e.

NEI's proposed wellbore spacing unit consists of the E/2NE/4 of Section 35 and the W/2NW/4 of Section 36, T3N, R 65W, creating a 160-acre wellbore spacing unit. NEI is not the only owner within the proposed wellbore spacing unit and as such provided notice to the remaining owner(s) within said proposed spacing unit as required under COGCC Rule 318A.e(6). Copies of the required notice letter(s) is/are on file at the NEI offices. The required twenty (20) day notice period has elapsed absent the receipt by NEI of an objection to said proposal by the owner(s) within the proposed spacing unit for this well.

Enclosed are copies of the following documents to assist you in your review and approval of NEI's proposed APD for the captioned well:

- Plat illustrating the proposed wellbore spacing unit and number of Codell/Niobrara wells located within the existing 160-acre governmental quarter section (NW/4) to be less than eight (8) in accordance with COGCC Rule 318A.f.
- Plat illustrating proposed wellbore spacing unit on existing location plat.

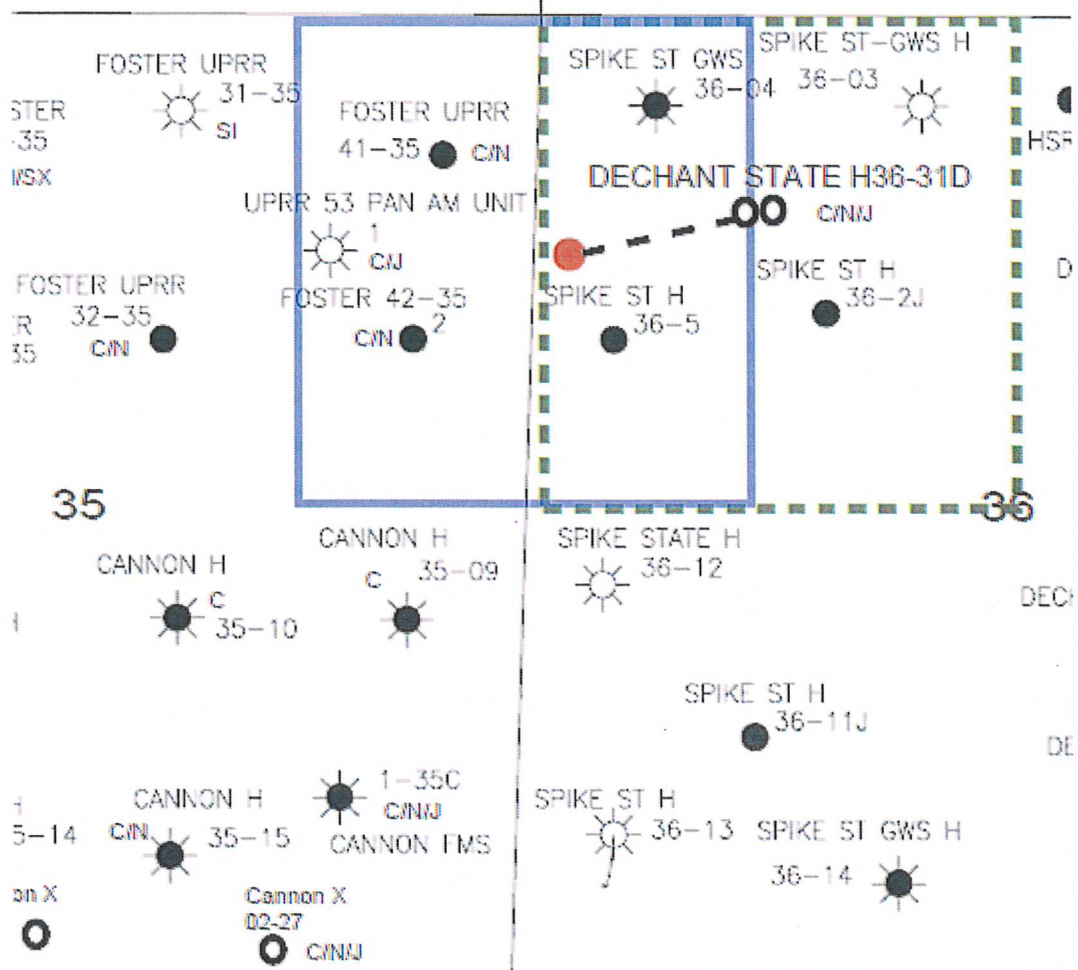
Thank you for your attention to the enclosed. NEI respectfully requests that the COGCC review the enclosed information and approve the Application for Permit to Drill the captioned well.

Sincerely,

A handwritten signature in blue ink that reads 'Mari Clark'. The signature is fluid and cursive, with a large loop at the end.

Mari Clark  
Regulatory Analyst II  
Noble Energy Inc.

**DECHANT STATE H36-31D**  
**NWNW Sec 36, T3N, R65W**



**LEGEND**



Proposed 160 acre Spacing Unit



Bottom Hole Located NWNW, Section 36, T3N-R65W

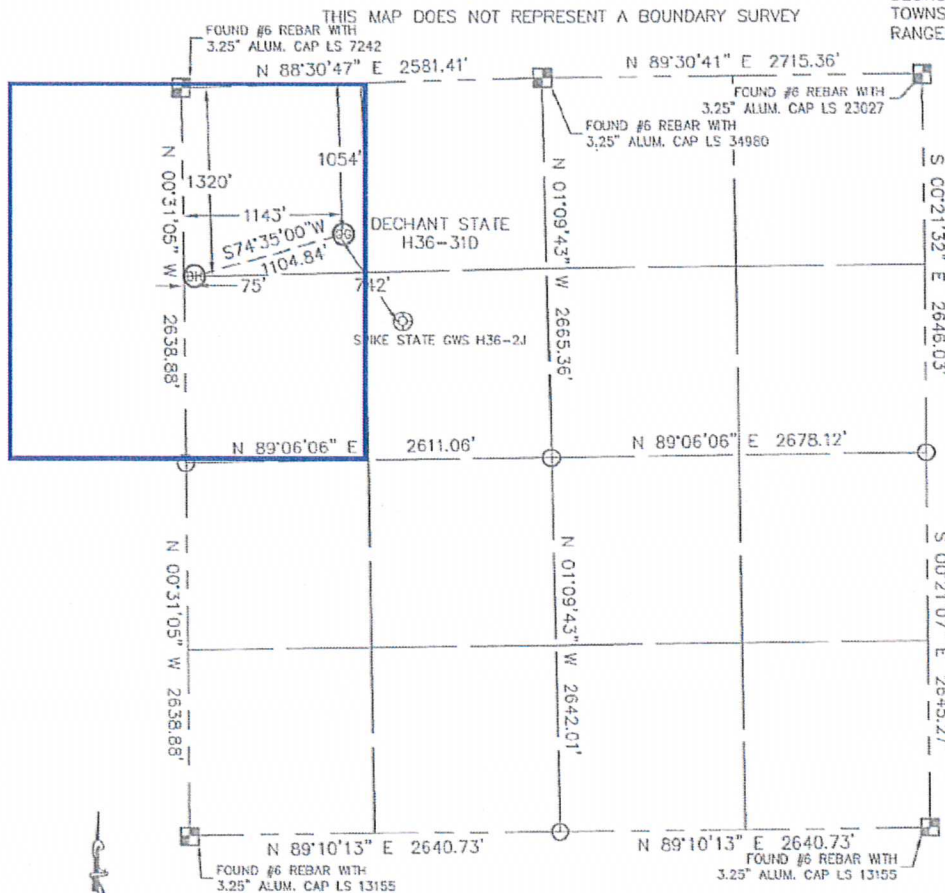
The governmental  $\frac{1}{4}$  Section has less than 8 bottom hole wells producing from the Codell, Niobrara, & J-Sand Formations.

# 318Ae PROPOSED SPACING UNIT

Lat40°, LLC 1635 Foxtrail Drive, Suite 325 Loveland, CO 80538

## WELL LOCATION CERTIFICATE

SECTION: 36  
TOWNSHIP: 3N  
RANGE: 65W



In accordance with a request from SEAN CASPER with Noble Energy Inc., Lat40°, LLC has determined the surface location of the DECHANT STATE H36-31D to be 1054' from the NORTH line and 1143' from the WEST line and the bottom hole to be 1320' from the NORTH line and 75' from the WEST line as measured at right angles from the section line of Section 36, Township 3 North, Range 65 West of the Sixth Principal Meridian, County of Weld, State of Colorado.

I hereby state that this Well Location Certificate was prepared by me, or under my direct supervision, that the fieldwork was completed on 4-15-10, for and on behalf of Noble Energy Inc. That this is not a Land Survey Plat or an Improvement Survey Plat, and that it is not to be relied upon for establishment of fence, building, or other future improvement lines.

### NOTE:

- 1) Bearings shown are Grid Bearings of the Colorado State Plane Coordinate System, North Zone, North American Datum 1983/2007. The lineal dimensions as contained herein are based upon the "U.S. Survey Foot."
- 2) Ground elevations are based on an observed GPS elevation (NAVD 1989 DATUM).
- 3) NEAREST EXISTING WELL: SPIKE STATE GWS H36-2J 742'
- 4) IMPROVEMENTS: See VISIBLE IMPROVEMENTS exhibit for all visible improvements within 400' of disturbed area.
- 5) SURFACE USE: RANGELAND

### NOTE

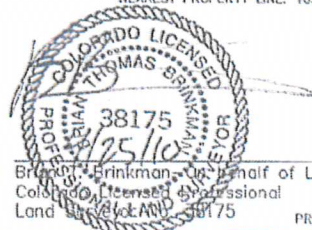
According to Colorado law, you must commence any legal action based upon any defect in this W.L.C. within three years after you discover such defect. In no event, may any action based upon any defect in this survey be commenced more than ten years after the date of the certificate shown hereon. (13-B0-105 C.R.S.)

### LEGEND

- = ALIQUOT MONUMENT AS DESCRIBED
- = CALCULATED POSITION

SURFACE LOCATION  
LATITUDE: 40.185937N  
LONGITUDE: 104.61765W  
PDOP: 1.5  
ELEV: 4816  
1/4, 1/4: NW1/4NW1/4  
NEAREST PROPERTY LINE: 1054' NORTH

BOTTOM HOLE  
LATITUDE: 40.18516N  
LONGITUDE: 104.62150W



Brinkman, Thomas, on behalf of Lat40°, LLC  
Colorado Licensed Professional Land Surveyor No. 38175  
PROJECT#: 2010008