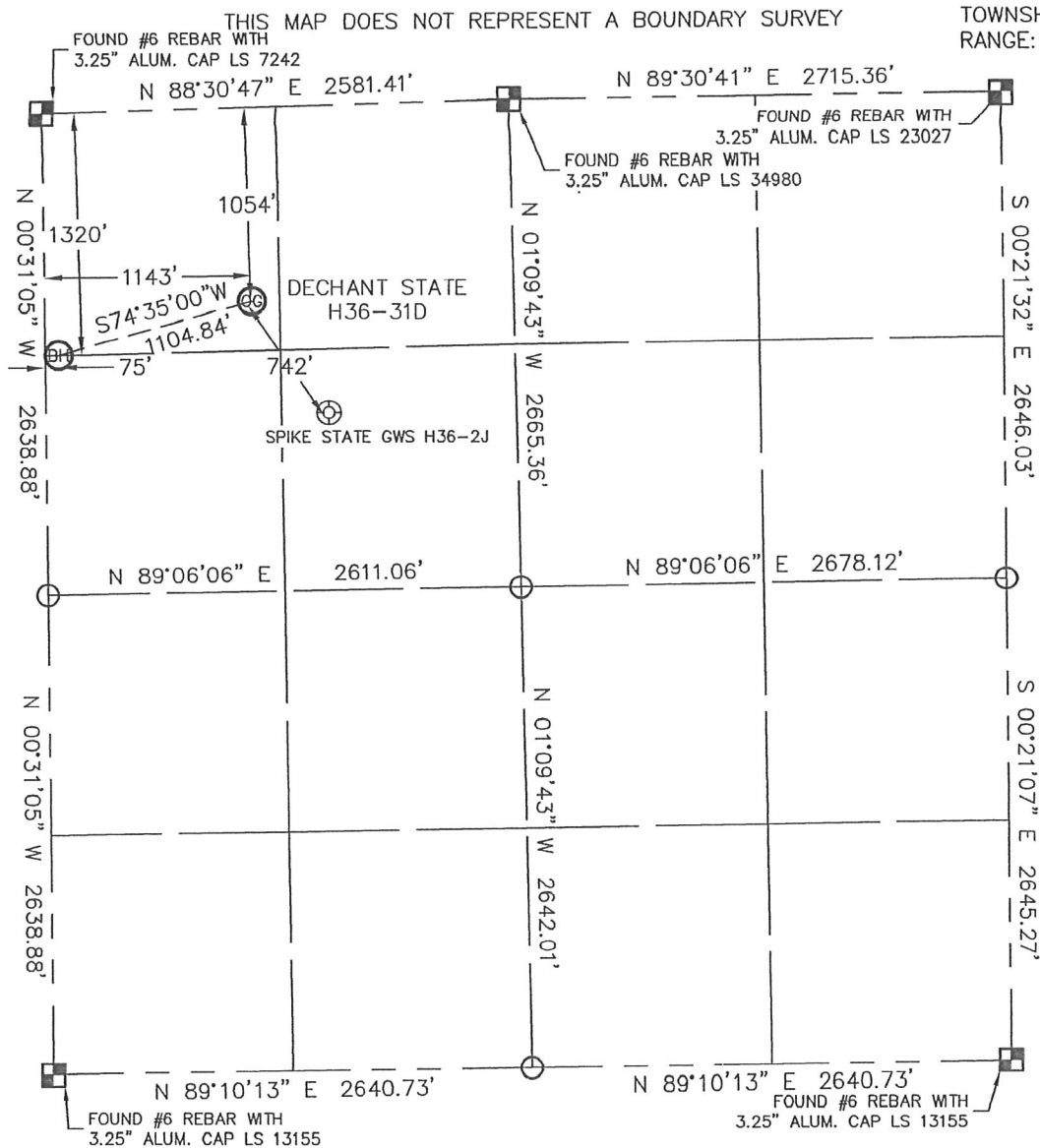


WELL LOCATION CERTIFICATE

SECTION: 36
TOWNSHIP: 3N
RANGE: 65W



In accordance with a request from SEAN CASPER with Noble Energy Inc. Lat40°, LLC has determined the surface location of the DECHANT STATE H36-31D to be 1054' from the NORTH line and 1143' from the WEST line and the bottom hole to be 1320' from the NORTH line and 75' from the WEST line as measured at right angles from the section line of Section 36, Township 3 North, Range 65 West of the Sixth Principal Meridian, County of Weld, State of Colorado.

I hereby state that this Well Location Certificate was prepared by me, or under my direct supervision, that the fieldwork was completed on 4-15-10, for and on behalf of Noble Energy Inc. That this is not a Land Survey Plat or an Improvement Survey Plat, and that it is not to be relied upon for establishment of fence, building, or other future improvement lines.

SURFACE LOCATION	BOTTOM HOLE
LATITUDE: 40.18593°N	LATITUDE: 40.18516°N
LONGITUDE: 104.61768°W	LONGITUDE: 104.62150°W
PDOP: 1.5	
ELEV: 4816	
1/4, 1/4: NW1/4NW1/4	
NEAREST PROPERTY LINE: 1054' NORTH	

NOTE:

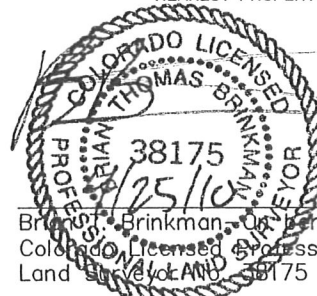
- 1) Bearings shown are Grid Bearings of the Colorado State Plane Coordinate System, North Zone, North American Datum 1983/2007. The lineal dimensions as contained herein are based upon the "U.S. Survey Foot."
- 2) Ground elevations are based on an observed GPS elevation (NAVD 1988 DATUM).
- 3) NEAREST EXISTING WELL: SPIKE STATE GWS H36-2J 742'
- 4) IMPROVEMENTS: See VISIBLE IMPROVEMENTS exhibit for all visible improvements within 400' of disturbed area.
- 5) SURFACE USE: RANGELAND

NOTE

According to Colorado law, you must commence any legal action based upon any defect in this W.L.C. within three years after you discover such defect. In no event, may any action based upon any defect in this survey be commenced more than ten years after the date of the certificate shown hereon. (13-80-105 C.R.S.)

LEGEND

- = ALIQUOT MONUMENT AS DESCRIBED
- = CALCULATED POSITION

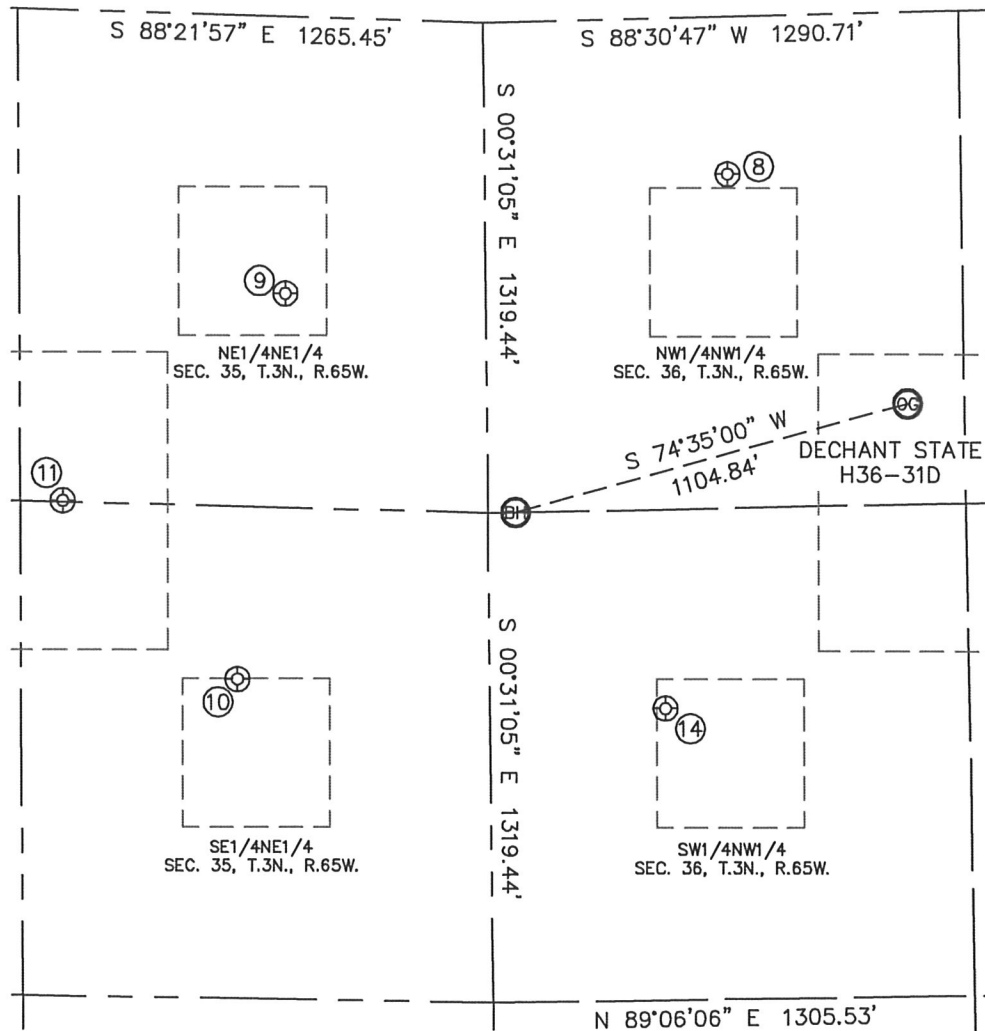


Brinkman, Thomas, on behalf of Lat40°, LLC
Colorado Licensed Professional
Land Surveyor AND 38175

PROJECT#: 2010008

SITE SKETCH

SECTION: 36
TOWNSHIP: 3N
RANGE: 65W



⑧
SPIKE STATE GWS H36-4
NW1/4NW1/4
425' FNL
661' FWL
LAT-40.18764°N
LONG-104.61940°W
PDOP: 2.1
ELEV: 4820

⑨
FOSTER UPRR 41-35
NE1/4NE1/4
745' FNL
545' FEL
LAT-40.18679°N
LONG-104.62372°W
PDOP: 1.7
ELEV: 4842

⑩
FOSTER UPRR 42-35 #2
SE1/4NE1/4
1787' FNL
686' FEL
LAT-40.18394°N
LONG-104.62423°W
PDOP: 1.2
ELEV: 4842

⑪
UPRR 53 PAN AM UNIT P1
NE1/4NE1/4
1320' FNL
1155' FEL
LAT-40.18527°N
LONG-104.62591°W
PDOP: 1.2
ELEV: 4844

⑭
SPIKE STATE GWS H36-5
SW1/4NW1/4
1858' FNL
476' FWL
LAT-40.18370°N
LONG-104.62007°W
PDOP: 1.5
ELEV: 4826

