

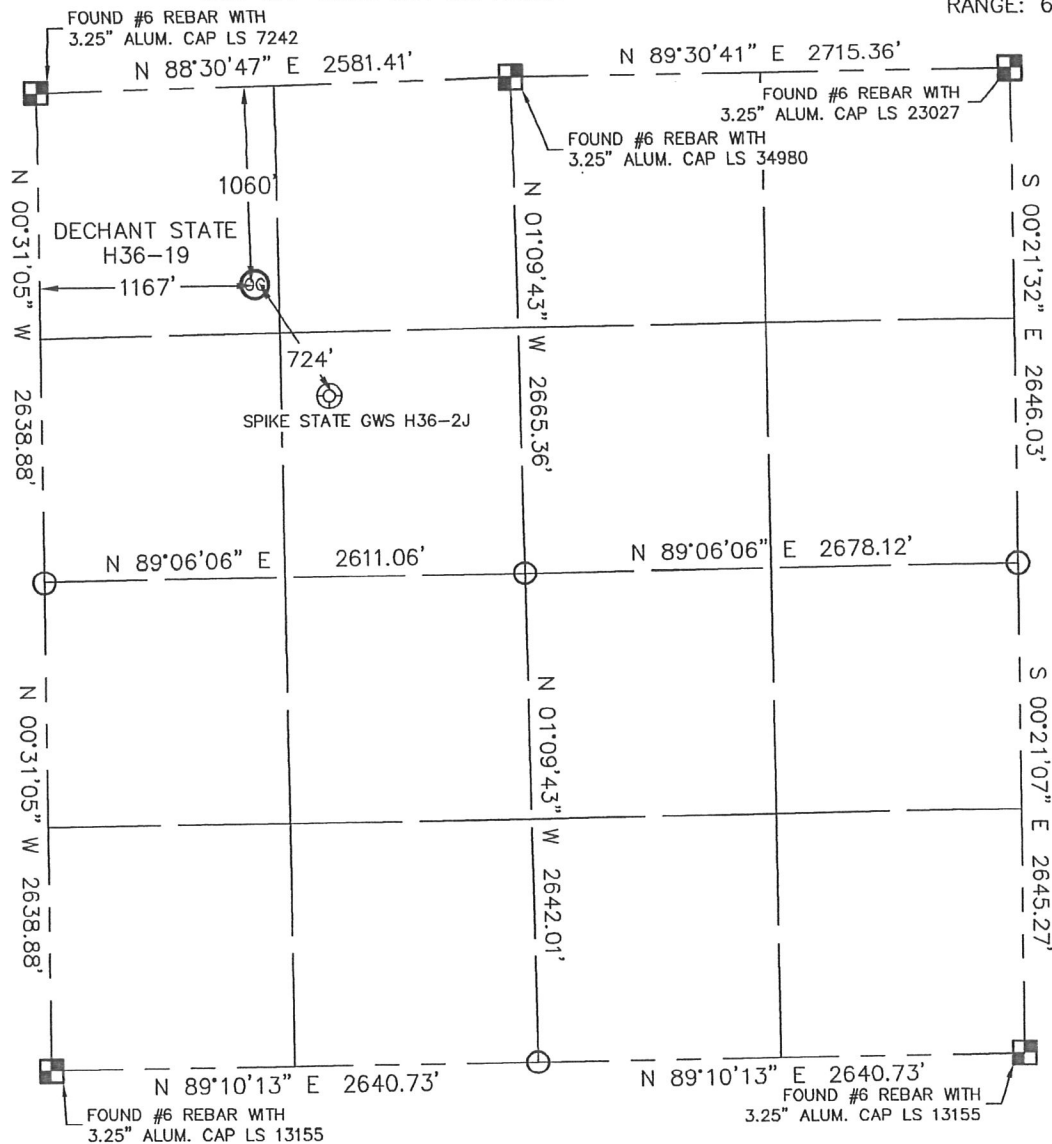
Lat40°, LLC

1635 Foxtrail Drive, Suite 325

Loveland, CO 80538

WELL LOCATION CERTIFICATE

THIS MAP DOES NOT REPRESENT A BOUNDARY SURVEY

SECTION: 36
TOWNSHIP: 3N
RANGE: 65W

In accordance with a request from SEAN CASPER with Noble Energy Inc.

Lat40°, LLC has determined the surface location of the DECHANT STATE H36-19 to be 1060' from the NORTH line and 1167' from the WEST line as measured at right angles from the section line of Section 36, Township 3 North, Range 65 West of the Sixth Principal Meridian, County of Weld, State of Colorado.

I hereby state that this Well Location Certificate was prepared by me, or under my direct supervision, that the fieldwork was completed on 4-15-10, for and on behalf of Noble Energy Inc. That this is not a Land Survey Plat or an Improvement Survey Plat, and that it is not to be relied upon for establishment of fence, building, or other future improvement lines.

SURFACE LOCATION
LATITUDE: 40.18592N
LONGITUDE: 104.61760W
PDOP: 1.6
ELEV: 4816
1/4, 1/4: NW1/4NW1/4
NEAREST PROPERTY LINE: 1060' NORTH



NOTE:

- 1) Bearings shown are Grid Bearings of the Colorado State Plane Coordinate System, North Zone, North American Datum 1983/2007. The lineal dimensions as contained herein are based upon the "U.S. Survey Foot."
- 2) Ground elevations are based on an observed GPS elevation (NAVD 1988 DATUM).
- 3) NEAREST EXISTING WELL: SPIKE STATE GWS H36-2J 724'
- 4) IMPROVEMENTS: See VISIBLE IMPROVEMENTS exhibit for all visible improvements within 400' of disturbed area.
- 5) SURFACE USE: RANGELAND

NOTE

According to Colorado law, you must commence any legal action based upon any defect in this W.L.C. within three years after you discover such defect. In no event, may any action based upon any defect in this survey be commenced more than ten years after the date of the certificate shown hereon. (13-80-105 C.R.S.)

LEGEND

-  = ALIQUOT MONUMENT AS DESCRIBED
 = CALCULATED POSITION

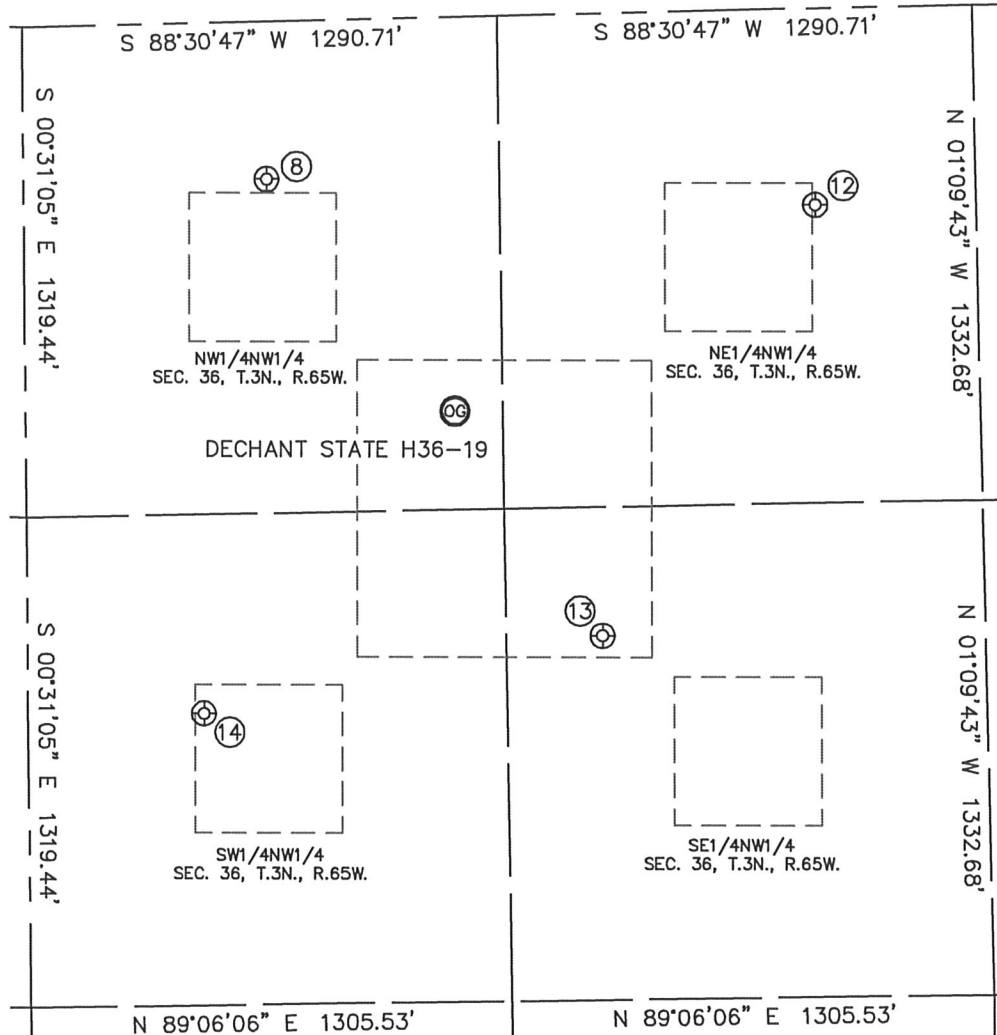


Brinkman, Thomas - On behalf of Lat40°, LLC
Colorado Licensed Professional
Land Surveyor No. 38175

PROJECT#: 2010008

SITE SKETCH

SECTION: 36
TOWNSHIP: 3N
RANGE: 65W



⑧

SPIKE STATE GWS H36-4
NW1/4NW1/4
425' FNL
661' FWL
LAT-40.18764°N
LONG-104.61940°W
PDOP: 2.1
ELEV: 4820

⑫

SPIKE STATE GWS H36-3
NE1/4NW1/4
529' FNL
2151' FWL
LAT-40.18742°N
LONG-104.61407°W
PDOP: 1.7
ELEV: 4809

⑬

SPIKE STATE GWS H36-2J
SE1/4NW1/4
1674' FNL
1562' FWL
LAT-40.18425°N
LONG-104.61619°W
PDOP: 1.5
ELEV: 4815

⑭

SPIKE STATE GWS H36-5
SW1/4NW1/4
1858' FNL
476' FWL
LAT-40.18370°N
LONG-104.62007°W
PDOP: 1.5
ELEV: 4826

