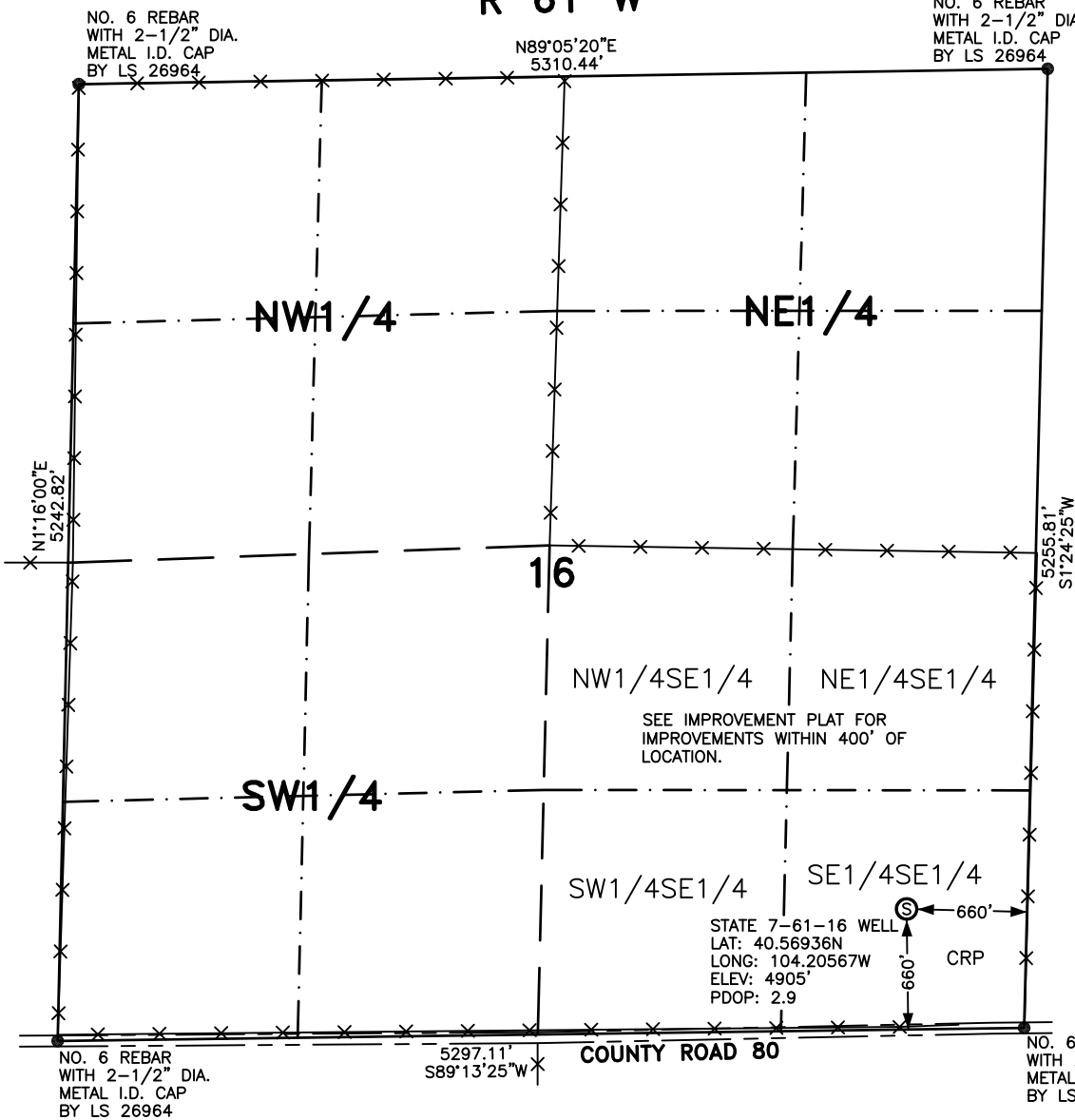


# WELL LOCATION FOR ANTELOPE ENERGY COMPANY, LLC

STATE 7-61-16

R 61 W



## NOTES

BEARINGS SHOWN HEREON ARE BASED UPON RTK GPS OBSERVATIONS

SEE IMPROVEMENT PLAT FOR IMPROVEMENTS WITHIN 400' OF LOCATION.

USGS QUAD MAP:  
DUTCH GIRL LAKE, COLO.

LAT/LONG VALUES ARE NAD83

ELEVATIONS BASED UPON NGS  
OPUS SOLUTION NAVD 88 DATUM

ALL DISTANCES TO SECTION LINES ARE MEASURED PERPENDICULAR TO AND ARE AT RIGHT ANGLES TO SAID SECTION LINES.

T  
7  
N

## LEGEND

⊙ FIELD SURVEYED  
WELL LOCATION

== == == ROAD

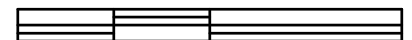
-x-x- FENCE

THIS WELL LOCATION PLAT HAS BEEN PREPARED FOR ANTELOPE ENERGY COMPANY, LLC, TO LOCATE THE STATE 7-61-16 WELL BEING 660 FEET FROM THE EAST LINE AND 660 FEET FROM THE SOUTH LINE IN THE SE1/4SE1/4 OF SECTION 16, TOWNSHIP 7 NORTH, RANGE 61 WEST OF THE 6TH P.M., WELD COUNTY, COLORADO. THE SURFACE ELEVATION AT THIS POINT IS 4905 FEET. THIS IS NOT A LAND SURVEY PLAT.



SCALE: 1" = 1000'

1000 500 0 1000



SCALE IN FEET

**LEIBERT-McATEE & ASSOCIATES, INC.**

P.O. BOX 442 615 SOUTH TENTH AVENUE  
STERLING, CO 80751 970-522-1960

FIELD DATE: 9-2-10

DWG DATE: 9-21-10

GPS OPERATOR:  
DARREN VEAL

STATE 7-61-16

DWG NO. 1060-10

SHEET 1 OF 1