

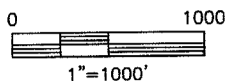
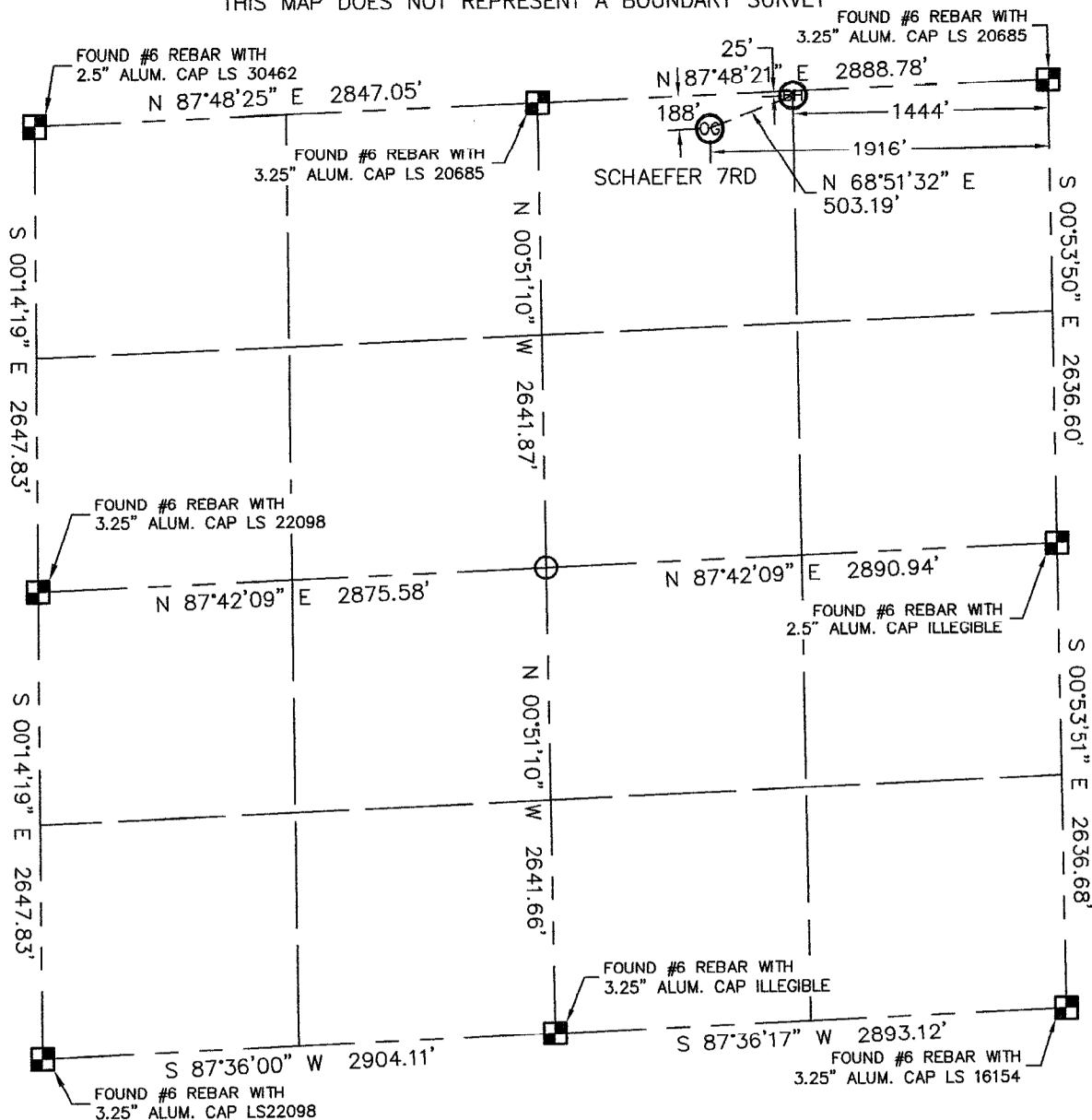


Lat40°, LLC 1635 Foxtrail Drive, Suite 325 Loveland, CO 80538

# WELL LOCATION CERTIFICATE

THIS MAP DOES NOT REPRESENT A BOUNDARY SURVEY

SECTION: 7  
TOWNSHIP: 6N  
RANGE: 66W



In accordance with a request from STEVE TRACY with PETROLEUM DEVELOPMENT CORPORATION Lat40°, LLC has determined the surface location of the SCHAEFER 7RD to be 188' from the NORTH line and 1916' from the EAST line and the bottom hole to be 25' from the NORTH line and 1444' from the EAST line as measured at right angles from the section lines of Section 7, Township 6 North, Range 66 West of the Sixth Principal Meridian, County of Weld, State of Colorado.

I hereby state that this Well Location Certificate was prepared by me, or under my direct supervision, that the fieldwork was completed on 9/24/10, for and on behalf of PETROLEUM DEVELOPMENT CORPORATION. That this is not a Land Survey Plat or an Improvement Survey Plat, and that it is not to be relied upon for establishment of fence, building, or other future improvement lines.

#### NOTE:

- 1) Bearings shown are Grid Bearings of the Colorado State Plane Coordinate System, North Zone, North American Datum 1983/2007. The lineal dimensions as contained herein are based upon the "U.S. Survey Foot."
- 2) Ground elevations are based on an observed GPS elevation (NAVD 1988 DATUM).
- 3) IMPROVEMENTS: See LOCATION DRAWING for all visible improvements within 400' of disturbed area.
- 4) SURFACE USE: IRRIGATED CROP
- 5) INSTRUMENT OPERATOR: BRIAN BRINKMAN

SURFACE LOCATION  
LATITUDE: 40.50871°N  
LONGITUDE: 104.81856°W  
PDOP: 1.4  
ELEV: 4874'  
1/4, 1/4: NW1/4NE1/4  
NEAREST PROPERTY LINE: 188' NORTH

BOTTOM HOLE  
LATITUDE: 40.50919°N  
LONGITUDE: 104.81687°W

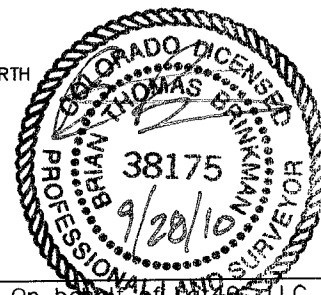
#### LEGEND



= ALIQUOT MONUMENT AS DESCRIBED



= CALCULATED POSITION



#### NOTE

According to Colorado law, you must commence any legal action based upon any defect in this W.L.C. within three years after you discover such defect. In no event, may any action based upon any defect in this survey be commenced more than ten years after the date of the certificate shown hereon. (13-80-105 C.R.S.)

Brian T. Brinkman—On behalf of Lat40°, LLC  
Colorado Licensed Professional  
Land Surveyor No. 38175

PROJECT#: 2010129