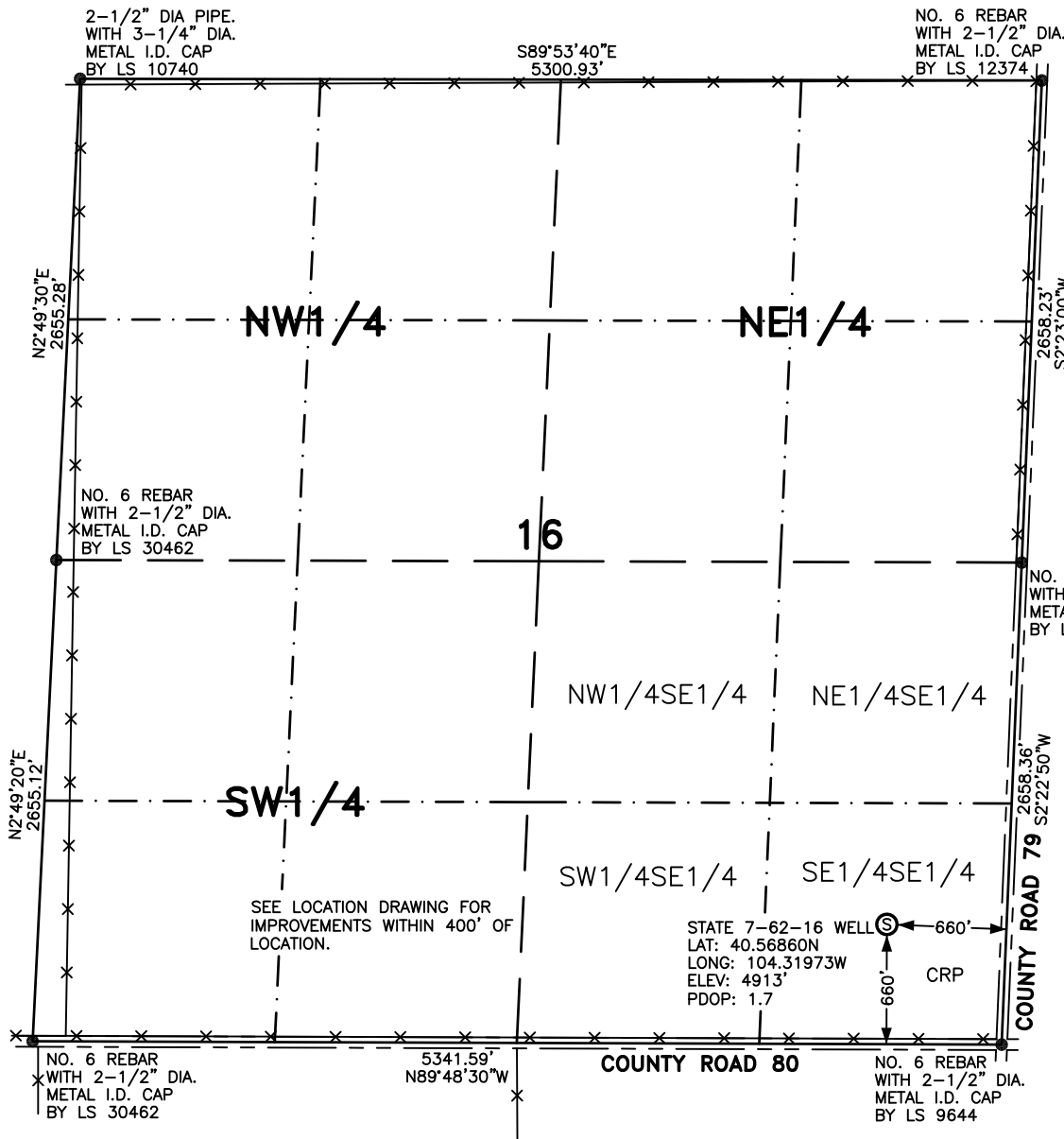


# WELL LOCATION FOR ANTELOPE ENERGY COMPANY, LLC

STATE 7-62-16

R 62 W



## NOTES

BEARINGS SHOWN HEREON ARE  
BASED UPON RTK GPS  
OBSERVATIONS

SEE LOCATION DRAWING FOR  
IMPROVEMENTS WITHIN 400' OF  
LOCATION.

USGS QUAD MAP:  
FOSSTON, COLO.

LAT/LONG VALUES ARE NAD83

ELEVATIONS BASED UPON NGS  
OPUS SOLUTION NAVD 88 DATUM

ALL DISTANCES TO SECTION LINES  
ARE MEASURED PERPENDICULAR  
TO AND ARE AT RIGHT ANGLES  
TO SAID SECTION LINES.

T  
7  
N

## LEGEND

⊙ FIELD SURVEYED  
WELL LOCATION

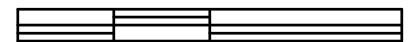
== == == ROAD

-x-x- FENCE



SCALE: 1" = 1000'

1000 500 0 1000



SCALE IN FEET

THIS WELL LOCATION PLAT HAS BEEN PREPARED FOR ANTELOPE ENERGY COMPANY, LLC,  
TO LOCATE THE STATE 7-62-16 WELL BEING 660 FEET FROM THE EAST LINE AND  
660 FEET FROM THE SOUTH LINE IN THE SE1/4SE1/4 OF SECTION 16,  
TOWNSHIP 7 NORTH, RANGE 62 WEST OF THE 6TH P.M., WELD COUNTY, COLORADO.  
THE SURFACE ELEVATION AT THIS POINT IS 4913 FEET.  
THIS IS NOT A LAND SURVEY PLAT.



**LEIBERT-McATEE & ASSOCIATES, INC.**

P.O. BOX 442 615 SOUTH TENTH AVENUE  
STERLING, CO 80751 970-522-1960

FIELD DATE: 9-2-10

DWG DATE: 9-21-10

GPS OPERATOR:  
DARREN VEAL

STATE 7-62-16

DWG NO. 1080-10

SHEET 1 OF 1