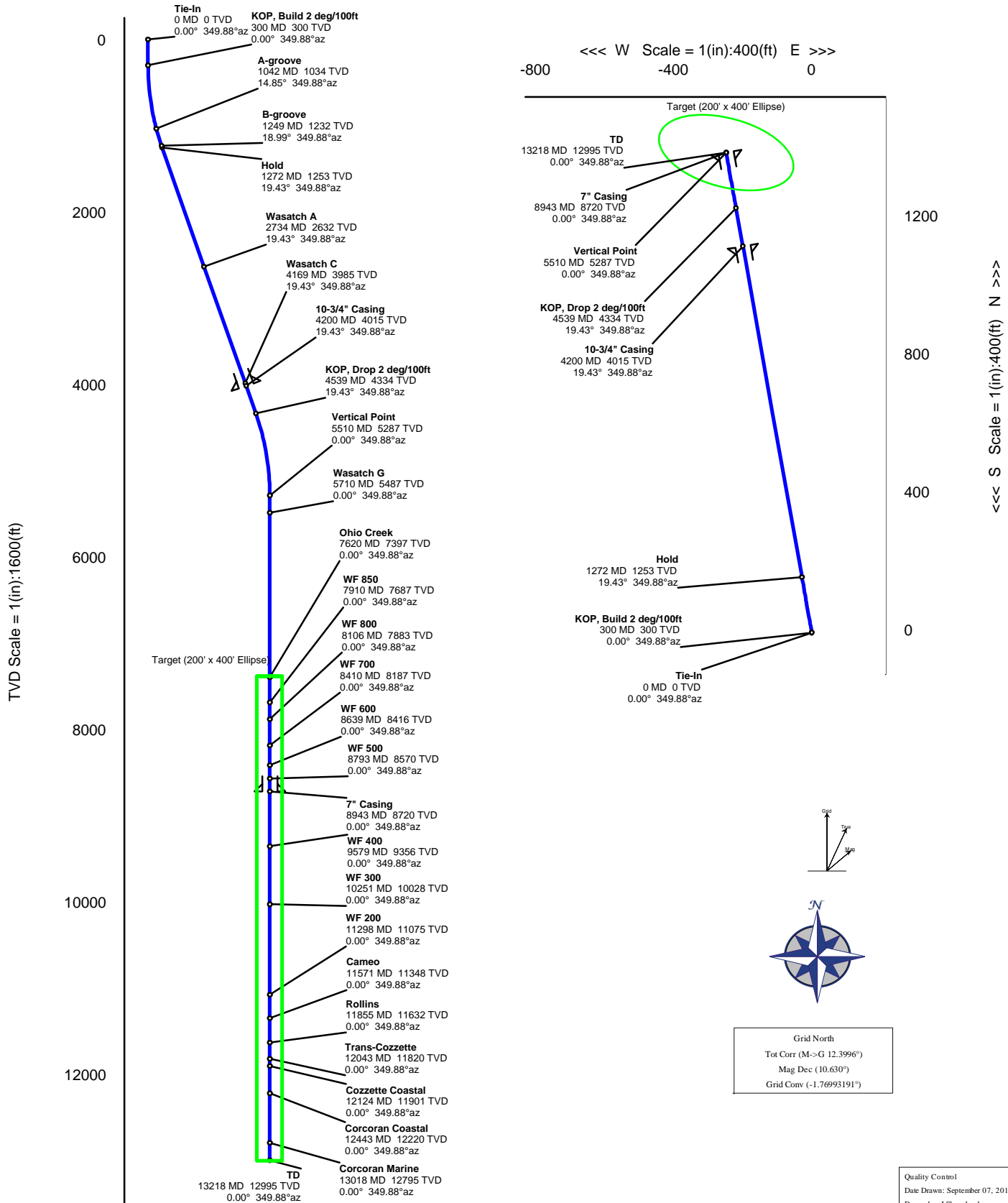


WELL <b>PCU 297-2C2</b>	FIELD <b>CO, Rio Blanco County</b>	STRUCTURE
Magnetic Parameters Model: BGM 2010 Dip: 66.067° Mag Dec: 10.630°	Date: September 02, 2010 FS: 52498.3mT	Surface Location Lat: N 39 53 59.980 Lon: W 108 14 21.360 Northing: 218283.73 ftUS Easting: 1231561.33 ftUS NAD27 Colorado State Plane, Northern Zone, US Feet Grid Conv: -1.76993191° Scale Fact: 0.99997548
Miscellaneous Slot: Slot 02 Plan: PCU 297-2C2 R0 lvs 2-Sept-10 TVD Ref: RKB(7057ft above MSL) Srvy Date: September 02, 2010		



## PCU 297-2C2 R0 Ivs 2-Sept-10 Proposal Report



(Def Plan)

**Report Date:** September 02, 2010 - 01:40 PM  
**Client:** ExxonMobil  
**Field:** CO, Rio Blanco County (NAD 27 NZ) ExxonMobil 2010  
**Structure / Slot:** ExxonMobil (PCU 297-2C Pad) / Slot 02  
**Well:** PCU 297-2C2  
**Borehole:** Original Hole  
**UWI / API#:** Unknown / Unknown  
**Survey Name:** PCU 297-2C2 R0 Ivs 2-Sept-10  
**Survey Date:** September 02, 2010  
**Tort / AHD / DDI / ERD Ratio:** 38.866 ° / 1413.298 ft / 4.747 / 0.109  
**Grid Coordinate System:** NAD27 Colorado State Plane, Northern Zone, US Feet  
**Location Lat / Long:** N 39° 53' 59.98047", W 108° 14' 21.36036"  
**Location Grid N/E Y/X:** N 218283.728 IUS, E 1231561.329 IUS  
**Grid Convergence Angle:** -1.76993191 °  
**Grid Scale Factor:** 0.99997548

**Survey / DLS Computation:** Minimum Curvature / Lubinski  
**Vertical Section Azimuth:** 349.880 ° (Grid North)  
**Vertical Section Origin:** -7.285 ft, 1.772 ft  
**TVD Reference Datum:** RKB  
**TVD Reference Elevation:** 7057.000 ft above MSL  
**Seabed / Ground Elevation:** 7057.000 ft above MSL  
**Magnetic Declination:** 10.630 °  
**Total Field Strength:** 52498.294 nT  
**Magnetic Dip Angle:** 66.067 °  
**Declination Date:** September 02, 2010  
**Magnetic Declination Model:** BGGM 2010  
**North Reference:** Grid North  
**Grid Correction:** -1.770 °  
**Total Corr Mag North->Grid North:** 12.400 °  
**Local Coord Referenced To:** Structure Reference Point

Comments	MD (ft)	Incl (°)	Azim Grid (°)	TVD (ft)	TVDSS (ft)	VSEC (ft)	NS (ft)	EW (ft)	DLS (ft/100ft)	Northing (ftUS)	Easting (ftUS)	Latitude (N/S ° ' ")	Longitude (E/W ° ' ")
Tie-In	0.00	0.00	349.88	0.00	-7057.00	0.00	-7.29	1.77	N/A	218283.73	1231561.33	N 39 53 59.98	W 108 14 21.36
	100.00	0.00	349.88	100.00	-6957.00	0.00	-7.29	1.77	0.00	218283.73	1231561.33	N 39 53 59.98	W 108 14 21.36
	200.00	0.00	349.88	200.00	-6857.00	0.00	-7.29	1.77	0.00	218283.73	1231561.33	N 39 53 59.98	W 108 14 21.36
KOP, Build 2 deg/100ft	300.00	0.00	349.88	300.00	-6757.00	0.00	-7.29	1.77	0.00	218283.73	1231561.33	N 39 53 59.98	W 108 14 21.36
	400.00	2.00	349.88	399.98	-6657.02	1.75	-5.57	1.47	2.00	218285.45	1231561.02	N 39 53 60.00	W 108 14 21.36
	500.00	4.00	349.88	499.84	-6557.16	8.98	-0.42	0.55	2.00	218290.60	1231560.10	N 39 54 0.05	W 108 14 21.38
	600.00	6.00	349.88	599.45	-6457.55	15.69	-0.99	0.00	2.00	218289.18	1231558.57	N 39 54 0.13	W 108 14 21.40
	700.00	8.00	349.88	698.70	-6358.30	27.88	20.16	-3.13	2.00	218311.17	1231556.43	N 39 54 0.25	W 108 14 21.43
	800.00	10.00	349.88	797.47	-6259.53	43.52	35.56	-5.88	2.00	218326.57	1231553.68	N 39 54 0.40	W 108 14 21.48
	900.00	12.00	349.88	895.62	-6161.38	62.60	54.34	-9.23	2.00	218345.36	1231550.33	N 39 54 0.59	W 108 14 21.53
A-groove	1000.00	14.00	349.88	993.06	-6063.94	85.10	76.49	-13.18	2.00	218367.50	1231546.38	N 39 54 0.80	W 108 14 21.59
	1042.28	14.85	349.88	1034.00	-6023.00	95.63	86.85	-15.03	2.00	218377.86	1231544.53	N 39 54 0.91	W 108 14 21.61
	1100.00	16.00	349.88	1089.64	-5967.36	110.98	101.97	-17.73	2.00	218392.98	1231541.83	N 39 54 1.05	W 108 14 21.65
B-groove	1200.00	18.00	349.88	1185.27	-5871.73	140.21	130.75	-22.87	2.00	218421.76	1231536.69	N 39 54 1.34	W 108 14 21.73
	1249.28	18.99	349.88	1232.00	-5825.00	155.84	146.13	-25.61	2.00	218437.14	1231533.95	N 39 54 1.49	W 108 14 21.77
Hold	1271.65	19.43	349.88	1253.12	-5803.88	163.20	153.38	-26.90	2.00	218444.39	1231532.65	N 39 54 1.56	W 108 14 21.79
	1300.00	19.43	349.88	1279.86	-5777.14	172.64	162.66	-28.56	0.00	218453.67	1231531.00	N 39 54 1.65	W 108 14 21.82
	1400.00	19.43	349.88	1374.17	-5682.83	205.91	195.42	-34.41	0.00	218486.43	1231525.15	N 39 54 1.97	W 108 14 21.90
	1500.00	19.43	349.88	1468.47	-5588.53	239.18	228.17	-40.25	0.00	218519.18	1231519.30	N 39 54 2.29	W 108 14 21.99
	1600.00	19.43	349.88	1562.77	-5494.23	272.45	260.92	-46.10	0.00	218551.93	1231513.46	N 39 54 2.62	W 108 14 22.08
	1700.00	19.43	349.88	1657.08	-5399.92	305.72	293.68	-51.95	0.00	218584.68	1231507.61	N 39 54 2.94	W 108 14 22.17
	1800.00	19.43	349.88	1751.38	-5305.62	338.99	326.43	-57.79	0.00	218617.43	1231501.77	N 39 54 3.26	W 108 14 22.26
	1900.00	19.43	349.88	1845.68	-5211.32	372.26	359.18	-63.64	0.00	218650.18	1231495.92	N 39 54 3.58	W 108 14 22.34
	2000.00	19.43	349.88	1939.98	-5117.02	405.53	391.93	-69.48	0.00	218682.94	1231490.07	N 39 54 3.90	W 108 14 22.43
	2100.00	19.43	349.88	2034.29	-5022.71	438.80	424.69	-75.33	0.00	218715.69	1231484.23	N 39 54 4.22	W 108 14 22.52
	2200.00	19.43	349.88	2128.59	-4928.41	472.07	457.44	-81.18	0.00	218748.44	1231478.38	N 39 54 4.55	W 108 14 22.61
	2300.00	19.43	349.88	2222.89	-4834.11	505.34	490.19	-87.02	0.00	218781.19	1231472.54	N 39 54 4.87	W 108 14 22.70
	2400.00	19.43	349.88	2317.20	-4739.80	538.61	522.94	-92.87	0.00	218813.94	1231466.69	N 39 54 5.19	W 108 14 22.78
	2500.00	19.43	349.88	2411.50	-4645.50	571.88	555.70	-98.71	0.00	218846.69	1231460.84	N 39 54 5.51	W 108 14 22.87
	2600.00	19.43	349.88	2505.80	-4551.20	605.15	588.45	-104.56	0.00	218879.45	1231455.00	N 39 54 5.83	W 108 14 22.96
Wasatch A	2700.00	19.43	349.88	2600.11	-4456.89	638.42	621.20	-110.41	0.00	218912.20	1231449.15	N 39 54 6.15	W 108 14 23.05
	2733.82	19.43	349.88	2632.00	-4425.00	649.67	632.28	-112.38	0.00	218923.27	1231447.18	N 39 54 6.26	W 108 14 23.08
	2800.00	19.43	349.88	2694.41	-4362.59	671.69	653.95	-116.25	0.00	218944.95	1231443.31	N 39 54 6.48	W 108 14 23.14
	2900.00	19.43	349.88	2788.71	-4268.29	704.96	686.71	-122.10	0.00	218977.70	1231437.46	N 39 54 6.80	W 108 14 23.22
	3000.00	19.43	349.88	2883.02	-4173.98	738.23	719.46	-127.95	0.00	219010.45	1231431.62	N 39 54 7.12	W 108 14 23.31
	3100.00	19.43	349.88	2977.32	-4079.68	771.50	752.21	-133.79	0.00	219043.21	1231425.77	N 39 54 7.44	W 108 14 23.40
	3200.00	19.43	349.88	3071.62	-3985.38	804.77	784.96	-139.64	0.00	219075.96	1231419.92	N 39 54 7.76	W 108 14 23.49
	3300.00	19.43	349.88	3165.93	-3891.07	838.04	817.72	-145.48	0.00	219108.71	1231414.08	N 39 54 8.08	W 108 14 23.58
	3400.00	19.43	349.88	3260.23	-3796.77	871.31	850.47	-151.33	0.00	219141.46	1231408.23	N 39 54 8.41	W 108 14 23.66
	3500.00	19.43	349.88	3354.53	-3702.47	904.58	883.22	-157.18	0.00	219174.21	1231402.39	N 39 54 8.73	W 108 14 23.75
	3600.00	19.43	349.88	3448.84	-3608.16	937.85	915.98	-163.02	0.00	219206.96	1231396.54	N 39 54 9.05	W 108 14 23.84
	3700.00	19.43	349.88	3543.14	-3513.86	971.12	948.73	-168.87	0.00	219239.72	1231390.69	N 39 54 9.37	W 108 14 23.93
	3800.00	19.43	349.88	3637.44	-3419.56	1004.39	981.48	-174.71	0.00	219272.47	1231384.85	N 39 54 9.69	W 108 14 24.02
	3900.00	19.43	349.88	3731.75	-3325.25	1037.66	1014.23	-180.56	0.00	219305.22	1231379.00	N 39 54 10.02	W 108 14 24.10
	4000.00	19.43	349.88	3826.05	-3230.95	1070.93	1046.99	-186.41	0.00	219337.97	1231373.16	N 39 54 10.34	W 108 14 24.19
Wasatch C	4100.00	19.43	349.88	3920.35	-3136.65	1104.20	1079.74	-192.25	0.00	219370.72	1231367.31	N 39 54 10.66	W 108 14 24.28
	4168.55	19.43	349.88	3985.00	-3072.00	1127.01	1102.19	-196.26	0.00	219393.18	1231363.30	N 39 54 10.88	W 108 14 24.34
	4200.00	19.43	349.88	4014.65	-3042.35	1137.47	1112.49	-198.10	0.00	219403.59	1231361.46	N 39 54 10.98	W 108 14 24.37
10-3/4" Casing	4200.37	19.43	349.88	4015.00	-3042.00	1137.60	1112.61	-198.12	0.00	219403.59	1231361.46	N 39 54 10.98	W 108 14 24.37
	4300.00	19.43	349.88	4108.96	-2948.04	1170.74	1145.24	-203.94	0.00	219436.23	1231355.62	N 39 54 11.30	W 108 14 24.46
	4400.00	19.43	349.88	4203.26	-2853.74	1204.01	1178.00	-209.79	0.00	219468.98	1231349.77	N 39 54 11.62	W 108 14 24.54
	4500.00	19.43	349.88	4297.56	-2759.44	1237.28	1210.75	-215.64	0.00	219501.73	1231343.93	N 39 54 11.95	W 108 14 24.63
KOP, Drop 2 deg/100ft	4538.51	19.43	349.88	4333.88	-2723.12	1250.10	1223.36	-217.89	0.00	219514.34	1231341.68	N 39 54 12.07	W 108 14 24.67
	4600.00	18.20	349.88	4392.08	-2664.92	1269.93	1242.89	-221.37	2.00	219533.87	1231338.19	N 39 54 12.26	W 108 14 24.72
	4700.00	16.20	349.88	4487.60	-2569.40	1299.51	1272.00	-226.57	2.00	219562.98	1231332.99	N 39 54 12.55	W 108 14 24.80
	4800.00	14.20	349.88	4584.10	-2472.90	1325.73	1297.82	-231.18	2.00	219588.80	1231328.39	N 39 54 12.80	W 108 14 24.87
	4900.00	12.20	349.88	4681.45	-2375.55	1348.57	1320.30	-235.19	2.00	219611.28	1231324.37	N 39 54 13.02	W 108 14 24.93
	5000.00	10.20	349.88	4779.54	-2277.46	1367.99	1339.43	-238.60	2.00	219630.40	1231320.96	N 39 54 13.21	W 108 14 24.98
	5100.00	8.20	349.88	4878.25	-2178.75	1383.99	1355.17	-241.41	2.00	219646.15	1231318.15	N 39 54 13.36	W 108 14 25.02
	5200.00	6.20	349.88	4977.45	-2079.55	1396.52	1367.51	-243.62	2.00	219658.49	1231315.95	N 39 54 13.49	W 108 14 25.05
	5300.00	4.20	349.88	5077.04	-1979.96	1405.59	1376.44	-245.21	2.00	219667.42	1231314.35	N 39 54 13.57	W 108 14 25.08
	5400.00	2.20	349.88	5176.88	-1880.12	1411.18	1381.94	-246.19	2.00	219672.92	1231313.37	N 39 54 13.63	W 108 14 25.09
Vertical Point	5500.00	0.20	349.88	5276.85	-1780.15	1413.28	1384.01	-246.56	2.00	219674.98	1231313.00	N 39 54 13.65	W 108 14 25.10
	5510.15	0.00	349.88	5287.00	-1770.00	1413.30	1384.02	-246.56	2.00	219675.00	1231313.00	N 39 54 13.65	W 108 14 25.10
	5600.00	0.00	349.88	5376.85	-1680.15	1413.30	1384.02	-246.56	0.00	219675.00	1231313.00	N 39 54 13.65	W 108 14 25.10
Wasatch G	5700.00	0.00	349.88	5476.85	-1580.15	1413.30	1384.02	-246.56	0.00	219675.00	1231313.00	N 39 54 13.65	W 108 14

Comments	MD (ft)	Incl (°)	Azim Grid (°)	TVD (ft)	TVDSS (ft)	VSEC (ft)	NS (ft)	EW (ft)	DLS (1700ft)	Northing (ftUS)	Easting (ftUS)	Latitude (N/S ° ' ")	Longitude (E/W ° ' ")
Ohio Creek	7600.00	0.00	349.88	7376.85	319.85	1413.30	1384.02	-246.56	0.00	219675.00	1231313.00	N 39 54 13.65	W 108 14 25.10
	7620.15	0.00	349.88	7397.00	340.00	1413.30	1384.02	-246.56	0.00	219675.00	1231313.00	N 39 54 13.65	W 108 14 25.10
	7700.00	0.00	349.88	7476.85	419.85	1413.30	1384.02	-246.56	0.00	219675.00	1231313.00	N 39 54 13.65	W 108 14 25.10
	7800.00	0.00	349.88	7576.85	519.85	1413.30	1384.02	-246.56	0.00	219675.00	1231313.00	N 39 54 13.65	W 108 14 25.10
	7900.00	0.00	349.88	7676.85	619.85	1413.30	1384.02	-246.56	0.00	219675.00	1231313.00	N 39 54 13.65	W 108 14 25.10
WF 850	7910.15	0.00	349.88	7687.00	630.00	1413.30	1384.02	-246.56	0.00	219675.00	1231313.00	N 39 54 13.65	W 108 14 25.10
	8000.00	0.00	349.88	7776.85	719.85	1413.30	1384.02	-246.56	0.00	219675.00	1231313.00	N 39 54 13.65	W 108 14 25.10
	8100.00	0.00	349.88	7876.85	819.85	1413.30	1384.02	-246.56	0.00	219675.00	1231313.00	N 39 54 13.65	W 108 14 25.10
WF 800	8106.15	0.00	349.88	7883.00	826.00	1413.30	1384.02	-246.56	0.00	219675.00	1231313.00	N 39 54 13.65	W 108 14 25.10
	8200.00	0.00	349.88	7976.85	919.85	1413.30	1384.02	-246.56	0.00	219675.00	1231313.00	N 39 54 13.65	W 108 14 25.10
	8300.00	0.00	349.88	8076.85	1019.85	1413.30	1384.02	-246.56	0.00	219675.00	1231313.00	N 39 54 13.65	W 108 14 25.10
WF 700	8400.00	0.00	349.88	8176.85	1119.85	1413.30	1384.02	-246.56	0.00	219675.00	1231313.00	N 39 54 13.65	W 108 14 25.10
	8410.15	0.00	349.88	8187.00	1130.00	1413.30	1384.02	-246.56	0.00	219675.00	1231313.00	N 39 54 13.65	W 108 14 25.10
	8500.00	0.00	349.88	8276.85	1219.85	1413.30	1384.02	-246.56	0.00	219675.00	1231313.00	N 39 54 13.65	W 108 14 25.10
	8600.00	0.00	349.88	8376.85	1319.85	1413.30	1384.02	-246.56	0.00	219675.00	1231313.00	N 39 54 13.65	W 108 14 25.10
	8639.15	0.00	349.88	8416.00	1359.00	1413.30	1384.02	-246.56	0.00	219675.00	1231313.00	N 39 54 13.65	W 108 14 25.10
WF 500	8700.00	0.00	349.88	8476.85	1419.85	1413.30	1384.02	-246.56	0.00	219675.00	1231313.00	N 39 54 13.65	W 108 14 25.10
	8793.15	0.00	349.88	8570.00	1513.00	1413.30	1384.02	-246.56	0.00	219675.00	1231313.00	N 39 54 13.65	W 108 14 25.10
	8800.00	0.00	349.88	8576.85	1519.85	1413.30	1384.02	-246.56	0.00	219675.00	1231313.00	N 39 54 13.65	W 108 14 25.10
	8900.00	0.00	349.88	8676.85	1619.85	1413.30	1384.02	-246.56	0.00	219675.00	1231313.00	N 39 54 13.65	W 108 14 25.10
7" Casing	8943.15	0.00	349.88	8720.00	1663.00	1413.30	1384.02	-246.56	0.00	219675.00	1231313.00	N 39 54 13.65	W 108 14 25.10
	9000.00	0.00	349.88	8776.85	1719.85	1413.30	1384.02	-246.56	0.00	219675.00	1231313.00	N 39 54 13.65	W 108 14 25.10
	9100.00	0.00	349.88	8876.85	1819.85	1413.30	1384.02	-246.56	0.00	219675.00	1231313.00	N 39 54 13.65	W 108 14 25.10
	9200.00	0.00	349.88	8976.85	1919.85	1413.30	1384.02	-246.56	0.00	219675.00	1231313.00	N 39 54 13.65	W 108 14 25.10
	9300.00	0.00	349.88	9076.85	2019.85	1413.30	1384.02	-246.56	0.00	219675.00	1231313.00	N 39 54 13.65	W 108 14 25.10
WF 400	9400.00	0.00	349.88	9176.85	2119.85	1413.30	1384.02	-246.56	0.00	219675.00	1231313.00	N 39 54 13.65	W 108 14 25.10
	9500.00	0.00	349.88	9276.85	2219.85	1413.30	1384.02	-246.56	0.00	219675.00	1231313.00	N 39 54 13.65	W 108 14 25.10
	9579.15	0.00	349.88	9356.00	2299.00	1413.30	1384.02	-246.56	0.00	219675.00	1231313.00	N 39 54 13.65	W 108 14 25.10
	9600.00	0.00	349.88	9376.85	2319.85	1413.30	1384.02	-246.56	0.00	219675.00	1231313.00	N 39 54 13.65	W 108 14 25.10
	9700.00	0.00	349.88	9476.85	2419.85	1413.30	1384.02	-246.56	0.00	219675.00	1231313.00	N 39 54 13.65	W 108 14 25.10
WF 300	9800.00	0.00	349.88	9576.85	2519.85	1413.30	1384.02	-246.56	0.00	219675.00	1231313.00	N 39 54 13.65	W 108 14 25.10
	9900.00	0.00	349.88	9676.85	2619.85	1413.30	1384.02	-246.56	0.00	219675.00	1231313.00	N 39 54 13.65	W 108 14 25.10
	10000.00	0.00	349.88	9776.85	2719.85	1413.30	1384.02	-246.56	0.00	219675.00	1231313.00	N 39 54 13.65	W 108 14 25.10
	10100.00	0.00	349.88	9876.85	2819.85	1413.30	1384.02	-246.56	0.00	219675.00	1231313.00	N 39 54 13.65	W 108 14 25.10
	10200.00	0.00	349.88	9976.85	2919.85	1413.30	1384.02	-246.56	0.00	219675.00	1231313.00	N 39 54 13.65	W 108 14 25.10
WF 200	10251.15	0.00	349.88	10028.00	2971.00	1413.30	1384.02	-246.56	0.00	219675.00	1231313.00	N 39 54 13.65	W 108 14 25.10
	10300.00	0.00	349.88	10076.85	3019.85	1413.30	1384.02	-246.56	0.00	219675.00	1231313.00	N 39 54 13.65	W 108 14 25.10
	10400.00	0.00	349.88	10176.85	3119.85	1413.30	1384.02	-246.56	0.00	219675.00	1231313.00	N 39 54 13.65	W 108 14 25.10
	10500.00	0.00	349.88	10276.85	3219.85	1413.30	1384.02	-246.56	0.00	219675.00	1231313.00	N 39 54 13.65	W 108 14 25.10
	10600.00	0.00	349.88	10376.85	3319.85	1413.30	1384.02	-246.56	0.00	219675.00	1231313.00	N 39 54 13.65	W 108 14 25.10
WF 100	10700.00	0.00	349.88	10476.85	3419.85	1413.30	1384.02	-246.56	0.00	219675.00	1231313.00	N 39 54 13.65	W 108 14 25.10
	10800.00	0.00	349.88	10576.85	3519.85	1413.30	1384.02	-246.56	0.00	219675.00	1231313.00	N 39 54 13.65	W 108 14 25.10
	10900.00	0.00	349.88	10676.85	3619.85	1413.30	1384.02	-246.56	0.00	219675.00	1231313.00	N 39 54 13.65	W 108 14 25.10
	11000.00	0.00	349.88	10776.85	3719.85	1413.30	1384.02	-246.56	0.00	219675.00	1231313.00	N 39 54 13.65	W 108 14 25.10
	11100.00	0.00	349.88	10876.85	3819.85	1413.30	1384.02	-246.56	0.00	219675.00	1231313.00	N 39 54 13.65	W 108 14 25.10
WF 50	11200.00	0.00	349.88	10976.85	3919.85	1413.30	1384.02	-246.56	0.00	219675.00	1231313.00	N 39 54 13.65	W 108 14 25.10
	11298.15	0.00	349.88	11075.00	4018.00	1413.30	1384.02	-246.56	0.00	219675.00	1231313.00	N 39 54 13.65	W 108 14 25.10
	11300.00	0.00	349.88	11076.85	4019.85	1413.30	1384.02	-246.56	0.00	219675.00	1231313.00	N 39 54 13.65	W 108 14 25.10
	11400.00	0.00	349.88	11176.85	4119.85	1413.30	1384.02	-246.56	0.00	219675.00	1231313.00	N 39 54 13.65	W 108 14 25.10
	11500.00	0.00	349.88	11276.85	4219.85	1413.30	1384.02	-246.56	0.00	219675.00	1231313.00	N 39 54 13.65	W 108 14 25.10
Cameo	11571.15	0.00	349.88	11348.00	4291.00	1413.30	1384.02	-246.56	0.00	219675.00	1231313.00	N 39 54 13.65	W 108 14 25.10
	11600.00	0.00	349.88	11376.85	4319.85	1413.30	1384.02	-246.56	0.00	219675.00	1231313.00	N 39 54 13.65	W 108 14 25.10
	11700.00	0.00	349.88	11476.85	4419.85	1413.30	1384.02	-246.56	0.00	219675.00	1231313.00	N 39 54 13.65	W 108 14 25.10
Rollins	11800.00	0.00	349.88	11576.85	4519.85	1413.30	1384.02	-246.56	0.00	219675.00	1231313.00	N 39 54 13.65	W 108 14 25.10
	11855.15	0.00	349.88	11632.00	4575.00	1413.30	1384.02	-246.56	0.00	219675.00	1231313.00	N 39 54 13.65	W 108 14 25.10
	11900.00	0.00	349.88	11676.85	4619.85	1413.30	1384.02	-246.56	0.00	219675.00	1231313.00	N 39 54 13.65	W 108 14 25.10
Trans-Cozzette	12000.00	0.00	349.88	11776.85	4719.85	1413.30	1384.02	-246.56	0.00	219675.00	1231313.00	N 39 54 13.65	W 108 14 25.10
	12043.15	0.00	349.88	11820.00	4763.00	1413.30	1384.02	-246.56	0.00	219675.00	1231313.00	N 39 54 13.65	W 108 14 25.10
	12100.00	0.00	349.88	11876.85	4819.85	1413.30	1384.02	-246.56	0.00	219675.00	1231313.00	N 39 54 13.65	W 108 14 25.10
Cozzette Coastal	12124.15	0.00	349.88	11901.00	4844.00	1413.30	1384.02	-246.56	0.00	219675.00	1231313.00	N 39 54 13.65	W 108 14 25.10
Corcoran Coastal	12200.00	0.00	349.88	11976.85	4919.85	1413.30	1384.02	-246.56	0.00	219675.00	1231313.00	N 39 54 13.65	W 108 14 25.10
	12300.00	0.00	349.88	12076.85	5019.85	1413.30	1384.02	-246.56	0.00	219675.00			